

# ATTORNEY GENERAL

## Enabling Laws

Act 215 of 2014

A.C.A. §25-16-701 et seq.

A.C.A. §04-88-101 et seq.

A.C.A. §05-55-101 et seq.

A.C.A. §16-90-706 et seq.

A.C.A. §23-04-301 et seq.

A.C.A. §04-111-101 et seq.

Constitution of Arkansas, Article 6

Constitution of Arkansas, Amendment 63

## History and Organization

The Office of Attorney General in Arkansas was established by Article 6, Section 1 of the Arkansas Constitution of 1874, which section has been likely superseded by Amendment 63, Section 1. It reads, in applicable part, as follows:

“The Executive Department of this state shall consist of a(n) ... Attorney General, . . . all of whom shall keep their offices at the seat of Government and hold their offices for the term of four years and until their successors are elected and qualified.”

Article 6, Section 3 of the Constitution provides that the Attorney General is elected by the qualified electors of the state at large at the general elections. The salary for the office is established by Amendment 70, Sections 1 and 3.

The only constitutional or statutory qualification for holding the office of Attorney General is that of Article 19, Section 3 and 4, Constitution of Arkansas, which requires all state officers to possess the qualifications of electors and requires officers for the state at large to reside within the state.

The statutory subchapter setting forth the fundamental duties for the Attorney General is found at A.C.A. §25-16-702 et seq. The primary responsibilities created therein are set forth below.

A.C.A. §25-16-702 provides as follows: "The Attorney General shall be the attorney for all state officials, departments, institutions, and agencies. Whenever any officer or department, institution, or agency of the state needs the services of an attorney, the matter shall be certified to the Attorney General for attention."

Section 702 also provided that the Attorney General shall have the authority to initiate civil lawsuits under all environmental protection statutes.

A.C.A. §25-16-703 provides that the Attorney General shall maintain and defend the interest of the state in the federal courts and that he or she shall be the legal representative of all state parties in litigation where the interests of the state are involved.

A.C.A. §25-16-704 provides that the Attorney General will attend and defend the state before the Supreme Court.

A.C.A. §25-16-706 provides that the Attorney General will, upon request, give his opinion to the Governor and heads of executive departments on any constitutional or legal questions concerning the official actions of such officers. The Attorney General is also authorized to give his opinion on certain legal matters to prosecuting attorneys, members of the General Assembly, county commissions and all state boards and commissions.

A.C.A. §25-16-709 empowers the Attorney General to bring suit against state officials who have collected or received state monies and not accounted for them according to the law.

In addition to the fundamental duties of the Attorney General set forth at A.C.A. §25-16-701 et seq., additional statutory duties have been prescribed for the office over the years. The most significant of these are set forth below.

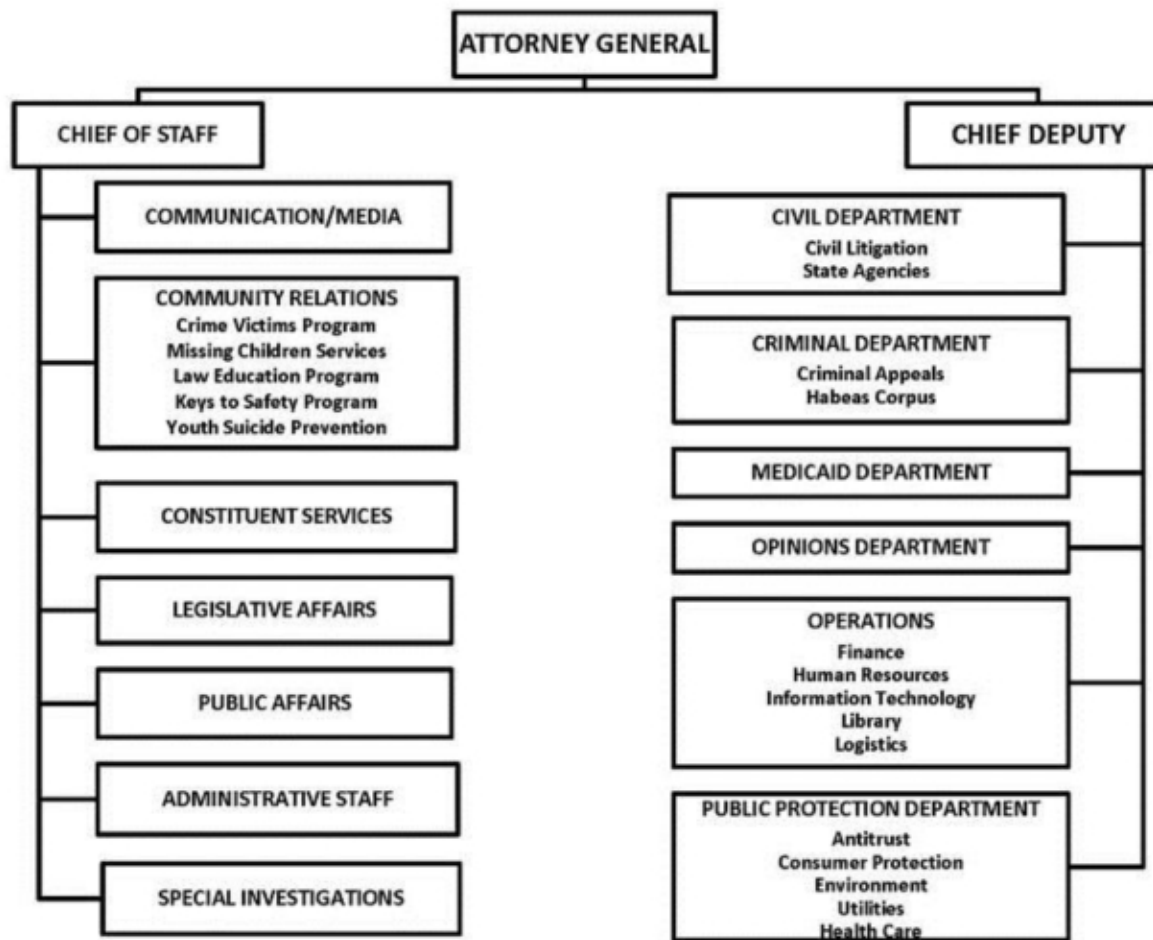
Consumer Protection. The Attorney General is charged with enforcing the "Deceptive Trade Practices Act," A.C.A. §4-88-101 et seq. This act creates the Consumer Protection Division, and authorizes that division to conduct investigations, promote consumer education, and bring lawsuits to enforce the provisions of the law. The division is also charged with registration of charities and professional fundraisers by A.C.A. §4-28-401 et seq.

Medicaid Fraud, A.C.A. §5-55-101 et seq. provides that the Office of Attorney General will investigate and bring cases regarding abuse, exploitation or neglect of nursing home residents and fraud against the Medicaid Program. The Office is also empowered under federal and state law to conduct criminal investigations and refer cases for prosecution. The Attorney General's staff may also be deputized by a prosecuting attorney and conduct prosecutions.

Crime Victims Reparations. The Crime Victims Reparations Board was created by A.C.A. §16-90-710 et seq. A.C.A. §16-90-706 provides that the Attorney General provide necessary office space, support staff and secretarial services to the Board for the administration of their statutory responsibilities.

Public Utilities, A.C.A. §23-4-301 et seq. creates a division within the office called the Consumer Utilities Rate Advocacy Division. This division is charged with representing the state, its subdivisions and ratepayers in state and federal proceedings related to utility matters.

An organization chart which reflects the structure of the Office of Attorney General is attached hereto.



## **Agency Commentary**

The Office of the Attorney General is the statutory legal counsel for the State's officials, departments, institutions and agencies. This Office also has the responsibility to administer the Crime Victims Reparation Program and protect the environment as well as the consumers of Arkansas. Statutory obligations are carried out through the following functions:

- |                         |                           |                                  |
|-------------------------|---------------------------|----------------------------------|
| 1) Communication/Media  | 6) Administrative Staff   | 10) Medicaid Fraud Department    |
| 2) Community Relations  | 7) Special Investigations | 11) Opinions Department          |
| 3) Constituent Services | 8) Civil Department       | 12) Operations                   |
| 4) Legislative Affairs  | 9) Criminal Department    | 13) Public Protection Department |
| 5) Public Affairs       |                           |                                  |

### **BASE LEVEL:**

In the area of Personal Services, the Office of the Attorney General's Base Level request is for funding of authorized positions at FY 2015 levels.

### **CHANGE LEVEL REQUESTS:**

The Office of the Attorney General (Appropriation 004), funded through State Central Services Fund, is utilized to operate Communication/Media, Community Relations, Constituent Services, Legislative Affairs, Public Affairs, Administrative Staff, Special Investigations, Civil, Criminal, Opinions, Operations and Public Protection functions.

The Office of the Attorney General is requesting to transfer two (2) positions from the State Crime Victims Program (Appropriation 1PE) to Operations (Appropriation 004). These positions are needed in the Special Investigations Unit of the Attorney General's Office.

The Office of the Attorney General respectfully requests an increase of \$448,826 in FY 2016 and \$470,774 in FY2017 Operating Expenses for leased office space. Additional appropriation for Operating Expenses has not been requested since FY 2012. The additional rent of facilities was needed due to the addition of 24,117 square feet of leased space since FY 2010. Additional space was needed to house the Special Investigations Unit as well as to accommodate public meeting rooms used by the Agency and other state agencies.

An increase in the Conference Fee & Travel line item of \$21,000 for FY 2016 and \$22,500 for FY 2017 is requested to accommodate the training required by the three new agents authorized in FY 2015 for the Special Investigations Unit as well as an overall increase in travel costs over the past few years. We respectfully request additional appropriation in Professional Fees & Services line item of \$162,000 in FY 2016 and \$167,000 in FY 2017 to provide the funds necessary to pay for the Expert Witnesses and other costs associated with providing legal representation to the State of Arkansas. Additional appropriation has not been requested since FY 2012 for these line items.

The Office of the Attorney General is requesting to increase appropriation for our Capital Outlay line item from \$100,000 for FY 2015 to \$135,000 in FY 2016 and to \$140,000 in FY 2017. The increase in appropriation is needed to replace equipment as it becomes obsolete as well as replacement of vehicles in our fleet. Additional appropriation for this line item has not been requested since FY 2012.

The Medicaid Department of the Office receives federal funds from the United States Department of Health and Human Services. Medicaid requirements are comprised of the Federal Program (Appropriation 188) and State Program (Appropriation 189). The Federal Program pays 75% of the total costs and the State Program, funded through the State Central Services Fund, pays the remaining 25% of total costs as match on the Federal dollars. The office is requesting that the Capital Outlay line item be restored to the FY 2015 level to allow for the replacement of vehicles in the fleet as well as obsolete equipment.

The Medicaid Indirect Costs (Appropriation 1PF), receives funding from the United States Department of Health and Human Services. The office is requesting to increase appropriation by \$166,871 for FY 2016 and \$180,838 in FY 2017. The appropriation will increase in the line item for Rent of Facilities as this fund may be used to pay part of agency rent if funding is available. An increase in this appropriation has not requested since FY 2012.

The Crime Victims Reparation Program receives federal funds from the United States Department of Justice. The Federal Program (Appropriation 1PH) funds approximately 40% of the crime victim payments. The State Program (Appropriation 1PE), funded by the State Administration of Justice Fund, is responsible for the remaining 60% of the crime victim payments.

For the last few years, the level of funding State Crime Victims has received from the State Administration of Justice Fund has not been sufficient to fund the reparations to crime victims that are authorized by state law. The difference has been funded by carry-forward fund savings. However, carry-forward funds have now been exhausted and insufficient funds are available in the State Administration of Justice Fund to fully fund the appropriation to State Crime Victims.

We are, therefore, respectfully requesting appropriation of \$3,000,000 in FY 2016 and FY 2017 for the State Crime Victims Program to be funded from the State Central Services Fund so this program may continue to operate. In addition, we have requested Special Language that will limit the use of State Central Services to supplementing any shortfall in the distribution to the Crime Victims Reparations Revolving fund from the State Administration of Justice Fund.

Each request in this budget is submitted in order that the Office of the Attorney General may continue to safeguard the interests of the citizens of Arkansas and to fulfill the statutory responsibilities of this Office by performing the legal actions of our state government.

## Audit Findings

DIVISION OF LEGISLATIVE AUDIT  
AUDIT OF :  
OFFICE OF THE ATTORNEY GENERAL  
FOR THE YEAR ENDED JUNE 30, 2012

Findings

Recommendations

None

None

## State Contracts Over \$50,000 Awarded To Minority Owned Businesses Fiscal Year 2014

None

## Employment Summary

	Male	Female	Total	%
White Employees	55	74	129	75 %
Black Employees	10	29	39	23 %
Other Racial Minorities	1	4	5	2 %
Total Minorities			44	25 %
Total Employees			173	100 %

## Publications

### A.C.A. 25-1-201 et seq.

Name	Statutory Authorization	Required for		# of Copies	Reason(s) for Continued Publication and Distribution	Unbound Black & White Copies Produced During the Last Two Years	Cost of Unbound Copies Produced During the Last Two Years
		Governor	General Assembly				
Lemon Law Books	Act 1313 of 2001	N	N	135,000	Required by Statutes to provide booklets to automobile dealers for every vehicle sold explaining the State's Lemon Law	0	0.00
Model Rules and Regulations for State Agencies	A.C.A. §25-15-215	N	N	250	Required by Statutes to provide model rules for each state agency	0	0.00



# Department Appropriation Summary

## Historical Data

## Agency Request and Executive Recommendation

Appropriation	2013-2014		2014-2015		2014-2015		2015-2016					2016-2017						
	Actual	Pos	Budget	Pos	Authorized	Pos	Base Level	Pos	Agency	Pos	Executive	Pos	Base Level	Pos	Agency	Pos	Executive	Pos
004 Attorney General - Administration	14,796,036	140	15,629,061	140	15,578,954	140	15,667,273	140	16,561,177	142	0	0	15,675,630	140	16,602,982	142	0	0
188 Medicaid Fraud - Federal	1,542,339	17	1,832,234	17	1,828,848	17	1,821,281	17	1,848,864	17	0	0	1,821,649	17	1,849,232	17	0	0
189 Medicaid Fraud - State	564,831	5	613,170	5	611,741	5	610,927	5	617,927	5	0	0	611,786	5	618,786	5	0	0
1PE Victims Reparations Program	3,164,176	11	2,164,723	11	4,069,702	11	4,079,013	11	3,951,935	9	0	0	4,079,013	11	3,951,935	9	0	0
1PF Medicaid Fraud - Indirect Costs	236,062	0	298,700	0	298,700	0	298,700	0	465,571	0	0	0	298,700	0	479,538	0	0	0
1PH Victims Reparations - Federal	1,070,286	1	1,572,441	1	1,573,404	1	1,573,674	1	1,573,674	1	0	0	1,573,674	1	1,573,674	1	0	0
2YK Spyware Monitoring	578	0	65,990	0	65,990	0	65,990	0	65,990	0	0	0	65,990	0	65,990	0	0	0
38U Internet Crime Child	34,017	0	50,000	0	50,000	0	50,000	0	50,000	0	0	0	50,000	0	50,000	0	0	0
N33 Crime Victim Reparations - STATE	0	0	0	0	0	0	0	0	3,000,000	0	0	0	0	0	3,000,000	0	0	0
<b>Total</b>	<b>21,408,325</b>	<b>174</b>	<b>22,226,319</b>	<b>174</b>	<b>24,077,339</b>	<b>174</b>	<b>24,166,858</b>	<b>174</b>	<b>28,135,138</b>	<b>174</b>	<b>0</b>	<b>0</b>	<b>24,176,442</b>	<b>174</b>	<b>28,192,137</b>	<b>174</b>	<b>0</b>	<b>0</b>

Funding Sources		%		%		%		%		%		%		%		%		%
Fund Balance	4000005	1,310,772	6.1	110,077	0.5		69,087	0.3	69,087	0.3	0	0.0	0	0.0	0	0.0	0	0.0
Federal Revenue	4000020	2,882,704	13.4	3,753,375	16.8		3,743,655	16.8	3,938,109	14.9	0	0.0	3,744,023	16.8	3,952,444	15.0	0	0.0
Special Revenue	4000030	91,977	0.4	100,000	0.4		100,000	0.4	100,000	0.4	0	0.0	100,000	0.5	100,000	0.4	0	0.0
State Central Services	4000035	15,360,867	71.4	16,242,231	72.9		16,278,200	73.1	20,179,104	76.5	0	0.0	16,287,416	73.3	20,221,768	76.7	0	0.0
Governor's Emergency Fund	4000275	100,000	0.5	0	0.0		0	0.0	0	0.0	0	0.0	0	0.0	0	0.0	0	0.0
State Administration of Justice	4000470	1,772,082	8.2	2,089,723	9.4		2,089,723	9.4	2,089,723	7.9	0	0.0	2,089,723	9.4	2,089,723	7.9	0	0.0
Total Funds		21,518,402	100.0	22,295,406	100.0		22,280,665	100.0	26,376,023	100.0	0	0.0	22,221,162	100.0	26,363,935	100.0	0	0.0
Excess Appropriation/(Funding)		(110,077)		(69,087)			1,886,193		1,759,115		0		1,955,280		1,828,202		0	
Grand Total		21,408,325		22,226,319			24,166,858		28,135,138		0		24,176,442		28,192,137		0	

No Executive Recommendations on these appropriations.

Variance in fund balance due to unfunded appropriation in FC's (1PE) Victims Reparations Program and (2YK) Spyware Monitoring.

## Agency Position Usage Report

FY2012 - 2013						FY2013 - 2014						FY2014 - 2015					
Authorized in Act	Budgeted			Unbudgeted	% of Authorized Unused	Authorized in Act	Budgeted			Unbudgeted	% of Authorized Unused	Authorized in Act	Budgeted			Unbudgeted	% of Authorized Unused
	Filled	Unfilled	Total	Total			Filled	Unfilled	Total	Total			Filled	Unfilled	Total	Total	
169	166	3	169	0	1.78 %	169	170	4	174	-5	-0.59 %	174	171	3	174	0	1.72 %

## Appropriation Summary

**Appropriation:** 004 - Attorney General - Administration

**Funding Sources:** HSC - State Central Services

### Historical Data

### Agency Request and Executive Recommendation

Commitment Item		Historical Data			Agency Request and Executive Recommendation			Agency Request and Executive Recommendation		
		2013-2014 Actual	2014-2015 Budget	2014-2015 Authorized	2015-2016			2016-2017		
					Base Level	Agency	Executive	Base Level	Agency	Executive
Regular Salaries	5010000	9,375,347	10,005,273	10,005,273	10,099,347	10,226,425	0	10,105,847	10,232,925	0
<b>#Positions</b>		<b>140</b>	<b>140</b>	<b>140</b>	<b>140</b>	<b>142</b>	<b>0</b>	<b>140</b>	<b>142</b>	<b>0</b>
Extra Help	5010001	32,935	37,224	37,224	37,224	37,224	0	37,224	37,224	0
<b>#Extra Help</b>		<b>5</b>	<b>8</b>	<b>8</b>	<b>8</b>	<b>8</b>	<b>0</b>	<b>8</b>	<b>8</b>	<b>0</b>
Personal Services Matching	5010003	2,790,696	2,949,487	2,899,380	2,993,625	2,993,625	0	2,995,482	2,995,482	0
Operating Expenses	5020002	2,038,090	1,960,342	1,960,342	1,960,342	2,409,168	0	1,960,342	2,431,116	0
Conference & Travel Expenses	5050009	95,812	100,167	100,167	100,167	121,167	0	100,167	122,667	0
Professional Fees	5060010	388,492	476,568	476,568	476,568	638,568	0	476,568	643,568	0
Data Processing	5090012	0	0	0	0	0	0	0	0	0
Capital Outlay	5120011	74,664	100,000	100,000	0	135,000	0	0	140,000	0
<b>Total</b>		<b>14,796,036</b>	<b>15,629,061</b>	<b>15,578,954</b>	<b>15,667,273</b>	<b>16,561,177</b>	<b>0</b>	<b>15,675,630</b>	<b>16,602,982</b>	<b>0</b>
<b>Funding Sources</b>										
State Central Services	4000035	14,796,036	15,629,061		15,667,273	16,561,177	0	15,675,630	16,602,982	0
Total Funding		14,796,036	15,629,061		15,667,273	16,561,177	0	15,675,630	16,602,982	0
Excess Appropriation/(Funding)		0	0		0	0	0	0	0	0
Grand Total		14,796,036	15,629,061		15,667,273	16,561,177	0	15,675,630	16,602,982	0

FY15 Budget amount in Personal Services Matching exceeds the authorized amount due to matching rate adjustments during the 2013-2015 Biennium.  
No Executive Recommendation made on this appropriation.

## Change Level by Appropriation

**Appropriation:** 004 - Attorney General - Administration  
**Funding Sources:** HSC - State Central Services

### Agency Request

Change Level		2015-2016	Pos	Cumulative	% of BL	2016-2017	Pos	Cumulative	% of BL
<b>BL</b>	<b>Base Level</b>	<b>15,667,273</b>	<b>140</b>	<b>15,667,273</b>	<b>100.0</b>	<b>15,675,630</b>	<b>140</b>	<b>15,675,630</b>	<b>100.0</b>
C01	Existing Program	766,826	0	16,434,099	104.9	800,274	0	16,475,904	105.1
C07	Agency Transfer	127,078	2	16,561,177	105.7	127,078	2	16,602,982	105.9

## Appropriation Summary

**Appropriation:** 188 - Medicaid Fraud - Federal

**Funding Sources:** FAY - Medicaid Operations Federal

### Historical Data

### Agency Request and Executive Recommendation

Commitment Item		2013-2014	2014-2015	2014-2015	2015-2016			2016-2017		
		Actual	Budget	Authorized	Base Level	Agency	Executive	Base Level	Agency	Executive
Regular Salaries	5010000	1,156,750	1,161,869	1,162,969	1,173,475	1,173,475	0	1,173,775	1,173,775	0
<b>#Positions</b>		<b>17</b>	<b>17</b>	<b>17</b>	<b>17</b>	<b>17</b>	<b>0</b>	<b>17</b>	<b>17</b>	<b>0</b>
Extra Help	5010001	20,898	29,870	29,870	29,870	29,870	0	29,870	29,870	0
<b>#Extra Help</b>		<b>2</b>	<b>2</b>	<b>2</b>	<b>2</b>	<b>2</b>	<b>0</b>	<b>2</b>	<b>2</b>	<b>0</b>
Personal Services Matching	5010003	345,240	348,564	344,078	353,588	353,588	0	353,656	353,656	0
Operating Expenses	5020002	15,045	202,286	202,286	202,286	202,286	0	202,286	202,286	0
Conference & Travel Expenses	5050009	4,292	37,206	37,206	37,206	37,206	0	37,206	37,206	0
Professional Fees	5060010	114	24,856	24,856	24,856	24,856	0	24,856	24,856	0
Data Processing	5090012	0	0	0	0	0	0	0	0	0
Capital Outlay	5120011	0	27,583	27,583	0	27,583	0	0	27,583	0
<b>Total</b>		<b>1,542,339</b>	<b>1,832,234</b>	<b>1,828,848</b>	<b>1,821,281</b>	<b>1,848,864</b>	<b>0</b>	<b>1,821,649</b>	<b>1,849,232</b>	<b>0</b>
<b>Funding Sources</b>										
Federal Revenue	4000020	1,542,339	1,832,234		1,821,281	1,848,864	0	1,821,649	1,849,232	0
Total Funding		1,542,339	1,832,234		1,821,281	1,848,864	0	1,821,649	1,849,232	0
Excess Appropriation/(Funding)		0	0		0	0	0	0	0	0
<b>Grand Total</b>		<b>1,542,339</b>	<b>1,832,234</b>		<b>1,821,281</b>	<b>1,848,864</b>	<b>0</b>	<b>1,821,649</b>	<b>1,849,232</b>	<b>0</b>

FY15 Budget amount in Personal Services Matching exceeds the authorized amount due to matching rate adjustments during the 2013-2015 Biennium.  
No Executive Recommendation made on this appropriation.

## Change Level by Appropriation

**Appropriation:** 188 - Medicaid Fraud - Federal

**Funding Sources:** FAY - Medicaid Operations Federal

### Agency Request

Change Level		2015-2016	Pos	Cumulative	% of BL	2016-2017	Pos	Cumulative	% of BL
<b>BL</b>	<b>Base Level</b>	<b>1,821,281</b>	<b>17</b>	<b>1,821,281</b>	<b>100.0</b>	<b>1,821,649</b>	<b>17</b>	<b>1,821,649</b>	<b>100.0</b>
C01	Existing Program	27,583	0	1,848,864	101.5	27,583	0	1,849,232	101.5

## Appropriation Summary

**Appropriation:** 189 - Medicaid Fraud - State

**Funding Sources:** HSC - State Central Services

### Historical Data

### Agency Request and Executive Recommendation

Commitment Item	2013-2014 Actual	2014-2015 Budget	2014-2015 Authorized	2015-2016			2016-2017		
				Base Level	Agency	Executive	Base Level	Agency	Executive
Regular Salaries 5010000	379,106	403,534	403,534	406,641	406,641	0	407,341	407,341	0
<b>#Positions</b>	<b>5</b>	<b>5</b>	<b>5</b>	<b>5</b>	<b>5</b>	<b>0</b>	<b>5</b>	<b>5</b>	<b>0</b>
Personal Services Matching 5010003	110,778	115,573	114,144	117,223	117,223	0	117,382	117,382	0
Operating Expenses 5020002	66,248	67,417	67,417	67,417	67,417	0	67,417	67,417	0
Conference & Travel Expenses 5050009	8,699	11,891	11,891	11,891	11,891	0	11,891	11,891	0
Professional Fees 5060010	0	7,755	7,755	7,755	7,755	0	7,755	7,755	0
Data Processing 5090012	0	0	0	0	0	0	0	0	0
Capital Outlay 5120011	0	7,000	7,000	0	7,000	0	0	7,000	0
<b>Total</b>	<b>564,831</b>	<b>613,170</b>	<b>611,741</b>	<b>610,927</b>	<b>617,927</b>	<b>0</b>	<b>611,786</b>	<b>618,786</b>	<b>0</b>
<b>Funding Sources</b>									
State Central Services 4000035	564,831	613,170		610,927	617,927	0	611,786	618,786	0
Total Funding	564,831	613,170		610,927	617,927	0	611,786	618,786	0
Excess Appropriation/(Funding)	0	0		0	0	0	0	0	0
Grand Total	564,831	613,170		610,927	617,927	0	611,786	618,786	0

No Executive Recommendation made on this appropriation.

## Change Level by Appropriation

**Appropriation:** 189 - Medicaid Fraud - State  
**Funding Sources:** HSC - State Central Services

### Agency Request

Change Level		2015-2016	Pos	Cumulative	% of BL	2016-2017	Pos	Cumulative	% of BL
<b>BL</b>	<b>Base Level</b>	<b>610,927</b>	<b>5</b>	<b>610,927</b>	<b>100.0</b>	<b>611,786</b>	<b>5</b>	<b>611,786</b>	<b>100.0</b>
C01	Existing Program	7,000	0	617,927	101.1	7,000	0	618,786	101.1



# Appropriation Summary

**Appropriation:** 1PE - Victims Reparations Program  
**Funding Sources:** TCR - Crime Victims Revolving Fund

## Historical Data

## Agency Request and Executive Recommendation

Commitment Item	Historical Data			2015-2016			2016-2017		
	2013-2014 Actual	2014-2015 Budget	2014-2015 Authorized	Base Level	Agency	Executive	Base Level	Agency	Executive
Regular Salaries 5010000	409,507	570,522	571,822	576,295	449,217	0	576,295	449,217	0
<b>#Positions</b>	<b>11</b>	<b>11</b>	<b>11</b>	<b>11</b>	<b>9</b>	<b>0</b>	<b>11</b>	<b>9</b>	<b>0</b>
Extra Help 5010001	0	14,000	14,000	14,000	14,000	0	14,000	14,000	0
<b>#Extra Help</b>	<b>0</b>	<b>2</b>	<b>2</b>	<b>2</b>	<b>2</b>	<b>0</b>	<b>2</b>	<b>2</b>	<b>0</b>
Personal Services Matching 5010003	147,158	184,156	182,120	186,958	186,958	0	186,958	186,958	0
Operating Expenses 5020002	34,034	80,558	80,558	80,558	80,558	0	80,558	80,558	0
Conference & Travel Expenses 5050009	544	16,974	16,974	16,974	16,974	0	16,974	16,974	0
Professional Fees 5060010	2,376	11,246	11,246	11,246	11,246	0	11,246	11,246	0
Data Processing 5090012	0	0	0	0	0	0	0	0	0
Claims 5110015	2,570,557	1,287,267	3,192,982	3,192,982	3,192,982	0	3,192,982	3,192,982	0
Capital Outlay 5120011	0	0	0	0	0	0	0	0	0
<b>Total</b>	<b>3,164,176</b>	<b>2,164,723</b>	<b>4,069,702</b>	<b>4,079,013</b>	<b>3,951,935</b>	<b>0</b>	<b>4,079,013</b>	<b>3,951,935</b>	<b>0</b>
<b>Funding Sources</b>									
Fund Balance 4000005	1,217,334	17,217		42,217	42,217	0	0	0	0
Special Revenue 4000030	91,977	100,000		100,000	100,000	0	100,000	100,000	0
Governor's Emergency Fund 4000275	100,000	0		0	0	0	0	0	0
State Administration of Justice 4000470	1,772,082	2,089,723		2,089,723	2,089,723	0	2,089,723	2,089,723	0
<b>Total Funding</b>	<b>3,181,393</b>	<b>2,206,940</b>		<b>2,231,940</b>	<b>2,231,940</b>	<b>0</b>	<b>2,189,723</b>	<b>2,189,723</b>	<b>0</b>
Excess Appropriation/(Funding)	(17,217)	(42,217)		1,847,073	1,719,995	0	1,889,290	1,762,212	0
<b>Grand Total</b>	<b>3,164,176</b>	<b>2,164,723</b>		<b>4,079,013</b>	<b>3,951,935</b>	<b>0</b>	<b>4,079,013</b>	<b>3,951,935</b>	<b>0</b>

No Executive Recommendation made on this appropriation.

## Change Level by Appropriation

**Appropriation:** 1PE - Victims Reparations Program  
**Funding Sources:** TCR - Crime Victims Revolving Fund

### Agency Request

Change Level		2015-2016	Pos	Cumulative	% of BL	2016-2017	Pos	Cumulative	% of BL
<b>BL</b>	<b>Base Level</b>	<b>4,079,013</b>	<b>11</b>	<b>4,079,013</b>	<b>100.0</b>	<b>4,079,013</b>	<b>11</b>	<b>4,079,013</b>	<b>100.0</b>
C07	Agency Transfer	(127,078)	(2)	3,951,935	96.9	(127,078)	(2)	3,951,935	96.9

## Appropriation Summary

**Appropriation:** 1PF - Medicaid Fraud - Indirect Costs

**Funding Sources:** FAY - Medicaid Indirect Costs Federal

### Historical Data

### Agency Request and Executive Recommendation

Commitment Item		Historical Data			Agency Request and Executive Recommendation			Agency Request and Executive Recommendation		
		2013-2014 Actual	2014-2015 Budget	2014-2015 Authorized	2015-2016			2016-2017		
					Base Level	Agency	Executive	Base Level	Agency	Executive
Operating Expenses	5020002	236,062	298,700	298,700	298,700	465,571	0	298,700	479,538	0
Conference & Travel Expenses	5050009	0	0	0	0	0	0	0	0	0
Professional Fees	5060010	0	0	0	0	0	0	0	0	0
Data Processing	5090012	0	0	0	0	0	0	0	0	0
Capital Outlay	5120011	0	0	0	0	0	0	0	0	0
<b>Total</b>		<b>236,062</b>	<b>298,700</b>	<b>298,700</b>	<b>298,700</b>	<b>465,571</b>	<b>0</b>	<b>298,700</b>	<b>479,538</b>	<b>0</b>
<b>Funding Sources</b>										
Federal Revenue	4000020	236,062	298,700		298,700	465,571	0	298,700	479,538	0
<b>Total Funding</b>		<b>236,062</b>	<b>298,700</b>		<b>298,700</b>	<b>465,571</b>	<b>0</b>	<b>298,700</b>	<b>479,538</b>	<b>0</b>
Excess Appropriation/(Funding)		0	0		0	0	0	0	0	0
<b>Grand Total</b>		<b>236,062</b>	<b>298,700</b>		<b>298,700</b>	<b>465,571</b>	<b>0</b>	<b>298,700</b>	<b>479,538</b>	<b>0</b>

No Executive Recommendation made on this appropriation.

## Change Level by Appropriation

**Appropriation:** 1PF - Medicaid Fraud - Indirect Costs  
**Funding Sources:** FAY - Medicaid Indirect Costs Federal

### Agency Request

Change Level		2015-2016	Pos	Cumulative	% of BL	2016-2017	Pos	Cumulative	% of BL
<b>BL</b>	<b>Base Level</b>	<b>298,700</b>	<b>0</b>	<b>298,700</b>	<b>100.0</b>	<b>298,700</b>	<b>0</b>	<b>298,700</b>	<b>100.0</b>
C01	Existing Program	335,571	0	634,271	212.3	349,538	0	648,238	217.0
C03	Discontinue Program	(168,700)	0	465,571	155.9	(168,700)	0	479,538	160.5

## Appropriation Summary

**Appropriation:** 1PH - Victims Reparations - Federal

**Funding Sources:** FAY - Crime Victims Reparation Program Federal

### Historical Data

### Agency Request and Executive Recommendation

Commitment Item	2013-2014 Actual	2014-2015 Budget	2014-2015 Authorized	2015-2016			2016-2017		
				Base Level	Agency	Executive	Base Level	Agency	Executive
Regular Salaries 5010000	29,199	33,215	34,115	34,115	34,115	0	34,115	34,115	0
<b>#Positions</b>	<b>1</b>	<b>1</b>	<b>1</b>	<b>1</b>	<b>1</b>	<b>0</b>	<b>1</b>	<b>1</b>	<b>0</b>
Personal Services Matching 5010003	11,560	12,427	12,490	12,760	12,760	0	12,760	12,760	0
Operating Expenses 5020002	0	26,900	26,900	26,900	26,900	0	26,900	26,900	0
Conference & Travel Expenses 5050009	0	0	0	0	0	0	0	0	0
Professional Fees 5060010	0	0	0	0	0	0	0	0	0
Data Processing 5090012	0	0	0	0	0	0	0	0	0
Claims 5110015	1,029,527	1,499,899	1,499,899	1,499,899	1,499,899	0	1,499,899	1,499,899	0
Capital Outlay 5120011	0	0	0	0	0	0	0	0	0
<b>Total</b>	<b>1,070,286</b>	<b>1,572,441</b>	<b>1,573,404</b>	<b>1,573,674</b>	<b>1,573,674</b>	<b>0</b>	<b>1,573,674</b>	<b>1,573,674</b>	<b>0</b>
<b>Funding Sources</b>									
Federal Revenue 4000020	1,070,286	1,572,441		1,573,674	1,573,674	0	1,573,674	1,573,674	0
Total Funding	1,070,286	1,572,441		1,573,674	1,573,674	0	1,573,674	1,573,674	0
Excess Appropriation/(Funding)	0	0		0	0	0	0	0	0
Grand Total	1,070,286	1,572,441		1,573,674	1,573,674	0	1,573,674	1,573,674	0

No Executive Recommendation made on this appropriation.

## Appropriation Summary

**Appropriation:** 2YK - Spyware Monitoring

**Funding Sources:** SSM - Spyware Monitoring Fund

### Historical Data

### Agency Request and Executive Recommendation

Commitment Item	Historical Data			2015-2016			2016-2017		
	2013-2014 Actual	2014-2015 Budget	2014-2015 Authorized	Base Level	Agency	Executive	Base Level	Agency	Executive
Spyware Monitoring 5900046	578	65,990	65,990	65,990	65,990	0	65,990	65,990	0
Total	578	65,990	65,990	65,990	65,990	0	65,990	65,990	0
Funding Sources									
Fund Balance 4000005	93,438	92,860		26,870	26,870	0	0	0	0
Total Funding	93,438	92,860		26,870	26,870	0	0	0	0
Excess Appropriation/(Funding)	(92,860)	(26,870)		39,120	39,120	0	65,990	65,990	0
Grand Total	578	65,990		65,990	65,990	0	65,990	65,990	0

No Executive Recommendation made on this appropriation.

## Appropriation Summary

**Appropriation:** 38U - Internet Crime Child

**Funding Sources:** FAY - Internet Crimes Federal

### Historical Data

### Agency Request and Executive Recommendation

Commitment Item		Historical Data			Agency Request and Executive Recommendation			Agency Request and Executive Recommendation		
		2013-2014 Actual	2014-2015 Budget	2014-2015 Authorized	2015-2016			2016-2017		
					Base Level	Agency	Executive	Base Level	Agency	Executive
Operating Expenses	5020002	34,017	45,450	45,450	45,450	45,450	0	45,450	45,450	0
Conference & Travel Expenses	5050009	0	0	0	0	0	0	0	0	0
Professional Fees	5060010	0	4,550	4,550	4,550	4,550	0	4,550	4,550	0
Data Processing	5090012	0	0	0	0	0	0	0	0	0
Capital Outlay	5120011	0	0	0	0	0	0	0	0	0
<b>Total</b>		<b>34,017</b>	<b>50,000</b>	<b>50,000</b>	<b>50,000</b>	<b>50,000</b>	<b>0</b>	<b>50,000</b>	<b>50,000</b>	<b>0</b>
<b>Funding Sources</b>										
Federal Revenue	4000020	34,017	50,000		50,000	50,000	0	50,000	50,000	0
<b>Total Funding</b>		<b>34,017</b>	<b>50,000</b>		<b>50,000</b>	<b>50,000</b>	<b>0</b>	<b>50,000</b>	<b>50,000</b>	<b>0</b>
Excess Appropriation/(Funding)		0	0		0	0	0	0	0	0
<b>Grand Total</b>		<b>34,017</b>	<b>50,000</b>		<b>50,000</b>	<b>50,000</b>	<b>0</b>	<b>50,000</b>	<b>50,000</b>	<b>0</b>

No Executive Recommendation made on this appropriation.

## Appropriation Summary

**Appropriation:** N33 - Crime Victim Reparations - State

**Funding Sources:** HSC - State Central Services

### Historical Data

### Agency Request and Executive Recommendation

Commitment Item	2013-2014	2014-2015	2014-2015	2015-2016			2016-2017		
	Actual	Budget	Authorized	Base Level	Agency	Executive	Base Level	Agency	Executive
Claims 5110015	0	0	0	0	3,000,000	0	0	3,000,000	0
Total	0	0	0	0	3,000,000	0	0	3,000,000	0
<b>Funding Sources</b>									
State Central Services 4000035	0	0		0	3,000,000	0	0	3,000,000	0
Total Funding	0	0		0	3,000,000	0	0	3,000,000	0
Excess Appropriation/(Funding)	0	0		0	0	0	0	0	0
Grand Total	0	0		0	3,000,000	0	0	3,000,000	0

No Executive Recommendation on this appropriation.



## Change Level by Appropriation

**Appropriation:** N33 - Crime Victim Reparations - State  
**Funding Sources:** HSC - State Central Services

### Agency Request

Change Level		2015-2016	Pos	Cumulative	% of BL	2016-2017	Pos	Cumulative	% of BL
C02	New Program	3,000,000	0	3,000,000	100.0	3,000,000	0	3,000,000	100.0