

VOLUME 2

PREPARED FOR THE ARKANSAS LEGISLATIVE COUNCIL

COMPARING APPROPRIATIONS AND OPERATIONS

FOR THE

2007 - 2009 BIENNIUM

WITH REQUESTS FOR

2009 - 2011 BIENNIUM



BUDGET INFORMATION
ARKANSAS GAME & FISH COMMISSION

ARKANSAS GAME AND FISH COMMISSION

2009 – 2011 BIENNIUM BUDGET REQUEST

TABLE OF CONTENTS

	<u>Page</u>
History and Organization	1
Organization Chart	3
Agency Commentary	4
Legislative Audit Findings	6
Employment Summary	7
Publications	8
Position Usage Report – By Fiscal Year	9
Position Usage Report – 3 Year Average	10
Department Appropriation Summary	11
Appropriation Summary – 259	12
Appropriation Summary – 33Y	13
Personal Services Summary – Position Request	14
Personal Services Summary – New Positions	17
Personal Services Summary – Unclassified Positions	18
Commitment Item Detail – 259	19
Commitment Item Detail – 33Y	23
Request for Special Language in Appropriation Act – 259	24
Request for Special Language in Appropriation Act – 33Y	35

ARKANSAS GAME AND FISH COMMISSION

Enabling Laws

Constitution of the State of Arkansas:

Amendment 35

Amendment 75

History and Organization

The mission of the Arkansas Game and Fish Commission is to wisely manage all the fish and wildlife resources of Arkansas while providing maximum enjoyment for the people.

The Commission attained its present constitutional status by Amendment 35 of 1944 to the State Constitution. This status has been defined by Arkansas Supreme Court Opinion Number 88-80 and Attorney General Opinion Number 89-98. The amendment established the Commission's responsibility and authority for the "... control, management, restoration, conservation and regulation of bird, fish, game and wildlife resources of the State...". This responsibility pertains to nongame species as well as game species of fish and wildlife. When wildlife habitat is maintained and improved to sustain healthy fish and wildlife populations, the entire citizenry of Arkansas is the beneficiary. The Commission has a perpetual goal to improve hunting and fishing opportunities for the sportsmen of the State, but it also realizes that a healthy environment for our fish and wildlife assures a healthy environment for the citizens of Arkansas. Amendment 75 of 1996 to the State Constitution established the one-eighth of one percent Conservation Sales Tax, and distributes forty-five percent of the net collections to the Commission, forty-five percent to the Department of Parks and Tourism, nine percent to the Department of Arkansas Heritage, and one percent to Keep Arkansas Beautiful. Commission activities are financed primarily through the sale of hunting and fishing licenses, tags, and permits; the Conservation Sales Tax; and by Federal Aid funding. General Revenue funds are not used for Commission programs.

The Commission is composed of eight members; seven Governor-appointed members who serve regular seven-year staggered terms, and an ex-officio member who is chairman of the Department of Biological Sciences at the University of Arkansas. The Commission selects and employs an Executive Secretary, or Director, who is delegated broad administrative responsibilities for over-seeing the daily operation of the agency and carrying out directives of the Commission. The Director's staff includes three Deputy Directors and thirteen Division Chiefs over the functional divisions listed below:

The Enforcement Division plays a vital role in the success of the Commission's programs by enforcing the regulations for protection and enjoyment of fish, game, and nongame resources. The Commission has implemented a Wildlife Officers training program to meet the high standards required in the performance of their duties. Wildlife Officers assist in other programs of the Commission including Acres for Wildlife, Hunter Education, Boating Education, and are an important link between the Commission and the public. Wildlife Officers enforce boating laws, have full police authority, and assist other law enforcement agencies in criminal matters. They are trained First Responders and participate in land and water search and rescue operations.

The Fisheries Management Division manages the state's fisheries populations; manages lakes, reservoirs and streams for public fishing; acquires, develops and maintains stream access sites, lakes, nursery ponds and hatcheries; conducts an intensive trout management program; and provides fisheries management advice. The Division conducts fish habitat condition investigations and an on-going research program to measure fish population trends, determine limiting factors and develop better management techniques. The Division also manages the mobile aquarium and Stream Team programs.

ARKANSAS GAME AND FISH COMMISSION

HISTORY AND ORGANIZATION (Continued)

The Wildlife Management Division has the responsibility of managing the state's wildlife populations. Modern wildlife management practices consist largely of establishing hunting season regulations, habitat improvement through forest management, development of food resources, construction and maintenance of structures for water control, and the management and control of wildlife populations. Wildlife Management Areas contain a number of roads, bridges, boat ramps, and parking areas to assist sportsmen in accessing the Areas for wildlife-related recreational purposes. The Division works with landowners to stimulate wildlife habitat development on privately-owned land.

The Communications Division is responsible for managing all internal and external communications efforts of the agency. These duties include the publication of *Arkansas Wildlife* magazine, production of news releases and other publications, management of the agency webpage and intranet site, electronic media efforts and contact with local, state and national press outlets. In addition, staff members produce a monthly employee newsletter. The Division plays a key role in securing information reflecting public perception and opinion. Various staff members also serve on the Director's Legislative Liaison Team.

The Construction, Engineering and Real Estate Division is responsible for land purchases, construction projects, Marine Fuel Tax projects, and the maintenance of capital assets statewide.

The Education and Outreach Division manages the Hunter Education, Boating Education, Project WILD, Hooked On Fishing Not on Drugs (HOFNOD), and Aquatic Resources programs which serve as vehicles for teaching not only safe hunting and boating, but all aspects of wildlife conservation and management. This Division operates Conservation Education Centers at the Rick Evans/Grandview Prairie center, the Cooks Lake/Potlatch center, and the Crooked Creek center. This division is responsible for the Governor Mike Huckabee/Delta Rivers Nature Center in Pine Bluff that opened in 2001, and the Forrest L. Wood/Crowley's Ridge Nature Center in Jonesboro that opened in August of 2004. The Janet Huckabee/Arkansas River Valley Nature Center opened in August of 2006 and the Witt Stephens, Jr./Central Arkansas Nature Center is scheduled to open in December 2008. Other services include educational publications, and exhibits for fairs and other shows.

The Fiscal Services Division administers the General Accounting, Licensing, Budgeting, Disbursing, Purchasing, and Federal Aid sections. The License Section works with approximately 800 license dealers who make licenses and permits available locally. Licenses are also available twenty-four hours, seven days a week via the internet at AGFC.com and by telephone at 1-800-364-GAME.

The GIS Division is responsible for the coordination and administration of agency activities pertaining to Global Positioning Systems (GPS) and Geographic Information Systems (GIS). The Division develops, maintains, and disseminates geospatial data, provides technical support and training to personnel and serves as the point of contact within the agency and with federal, state, local and private partners.

The Human Resources Division is responsible for personnel management functions, employee recruitment and training, and payroll processing.

The Information Technology Division provides data processing services via a statewide PC network system for all divisions and operates the agency's telephone communication system.

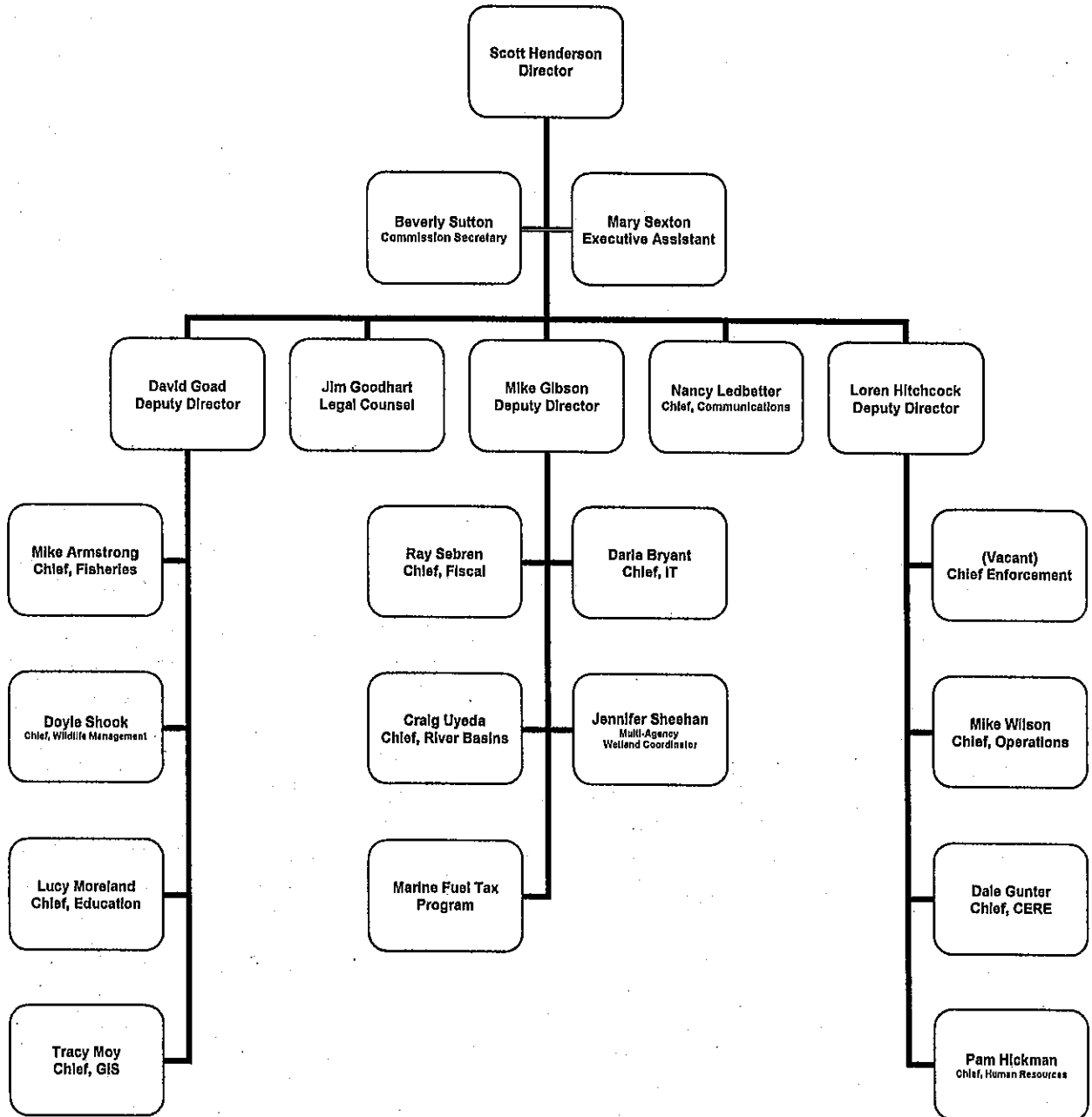
The Legal Division includes the General Counsel for the agency and two staff attorneys.

The Operations Division is responsible for vehicle fleet operations, building services, and the operation of ten regional offices.

The River Basins and Governmental Relations Division is responsible for coordination of fish and wildlife resource review and comment on various water related development activities and proposals, as well as developing opportunities to protect, enhance, and restore fish and wildlife habitat in Arkansas.

ARKANSAS GAME AND FISH COMMISSION

Organization Chart



ARKANSAS GAME AND FISH COMMISSION

Agency Commentary

The Arkansas Game and Fish Commission has entered five-year mineral lease agreements with Chesapeake Energy of Oklahoma City on Gulf Mountain Wildlife Management Area in Van Buren County and Petit Jean River WMA in Yell County. There are 3,949 net mineral acres open for exploration on Gulf Mountain WMA, with a 20 percent royalty on gas production. The signing bonus for Gulf Mountain WMA is \$28,298,131. There are 7,578 net mineral acres open for exploration on Petit Jean River WMA, also with a 20 percent royalty on gas production. The signing bonus for Petit Jean River WMA is \$1,248,772. When this budget request was submitted, no production schedule for drilling on these WMAs had been received from Chesapeake Energy.

In addition to these two leases, AGFC has leases on the southern half of Gulf Mountain WMA (Van Buren County, 2,965 net mineral acres, 20 percent royalty, \$2,945,399 signing bonus) and Ed Gordon Point Remove WMA (Conway County, 165 net mineral acres, 20 percent royalty, \$99,000 signing bonus). These payments were appropriated during the 2007 legislative budget process. No successful gas exploration has taken place on either of these leases.

All mineral lease income is subject to the 1.5% Special Revenue fee. Appropriation 33Y is used exclusively for gas lease revenue. It shows a carry-forward of funding of \$30,102,433 from 2008-09 to 2009-10 in sub-fund SDG0800 of the Game Protection Fund. In 2009-10, the projection is for \$985,000 of gas lease production payments and \$500,000 of interest earnings on the sub-fund balance. The carry-forward plus the projected revenue totals \$31,587,433. The appropriation request for 2009-10 totals \$34,500,000.

For 2010-11, the projection is for \$1,970,000 of gas lease production payments and \$100,000 of interest earnings for total funding of \$2.1 million. There are no production estimates or schedules available from the lessees, and by 2010-11 the revenue may be higher than our projection. Therefore, the appropriation request is for \$21.5 million to cover any growth in the revenues.

As a safeguard, new special language is requested on Page 32 to authorize any unexpended appropriation remaining June 30, 2010, to carry-forward for the same purposes to 2010-11. Requesting extra appropriation for both years will allow the agency some flexibility in allocating the funds between land acquisition and maintenance and operation.

Preliminary plans for expenditure of the gas lease revenue are as follows:

- \$20,000,000 for land for hunting, fishing and wildlife viewing, especially privately owned in-holdings on existing wildlife management areas. The acquisitions will be via conservation easements or fee title purchases. Conservation easements would not have any impact on the local tax base. The land would remain on the tax books and the AGFC would be acquiring access rights for the public to enjoy in perpetuity. Any fee title acquisition would take the tract of land off the tax books. Fee title acquisitions are done only after consultation with the local quorum courts.
- \$2,000,000 will be used for grants to other state agencies: \$350,000 each year to the Arkansas Department of Environmental Quality for monitoring water quality and impacts on wildlife habitat, and \$650,000 each year to the Arkansas Oil and Gas Commission for habitat restoration on abandoned well sites near wildlife management areas and any free flowing stream.

ARKANSAS GAME AND FISH COMMISSION

- \$5,000,000 for infrastructure. This will include a local matching grant fund for cooperative projects across the state. This also includes renovation of facilities and construction of facilities.
- \$2,500,000 for educational programs. This includes acquisition of and improvements to Camp Ouachita and expansion of the shooting sports and archery programs.

The AGFC is submitting its sixth biennium budget request since voters approved the 1/8th-Cent Conservation Sales Tax (Amendment 75 of 1996).

Historical concerns about inadequate revenue and cash flow have been replaced by needs for a long-term land-acquisition plan and capital-improvements program, greater resolution in program evaluation and tracking, and a management information system that facilitates public accountability and input. Changes are being made in management and information systems to address these needs. Revenue from the 1/8th-Cent Conservation Sales Tax is meeting projections and has allowed the commission to address a backlog of maintenance and operations needs for the first time in decades. A large portion of the revenue fuels capital improvements and nature centers across the state.

As in previous biennia, the agency's budget request is for an appropriation in excess of anticipated funding. This ensures that appropriations in all commitment items will allow the commission the flexibility to adjust priorities as planning advances, as opportunities or needs arise, and to cover major construction projects that are carried over from one fiscal year to the next.

In 2007-08, the agency sold 626,785 resident licenses and 206,761 non-resident licenses. In 2006 (the most recent year for which data is available), state residents and non-residents spent \$2.1 billion on wildlife-associated recreation in Arkansas (*2006 National Survey of Fishing, Hunting and Wildlife-Associated Recreation*, USFWS, 2007). More than 20,000 full and part-time jobs are supported in the Arkansas economy by retail purchases by hunters, anglers and wildlife watchers (Southwick Associates).

Annually, the agency prepares an internal operating budget detailed by functional operating divisions and expense categories. The 2008-09 fiscal year internal budget, which uses Appropriation 259, was allocated as follows:

<u>Operating Divisions</u>		<u>Expense Categories</u>	
Law Enforcement	20.9%	Salaries and Related Expenses	49.9%
Wildlife Management	18.5%	Maintenance and Operations	38.4%
Fisheries Management	14.1%	Capital Projects	8.0%
Education & Outreach	9.1%	Equipment and Vehicle Purchases	3.7%
Capital Projects	8.0%		
General Administration	4.4%		
Support Services	25.0%		

Support Services includes Communications, Construction Engineering and Real Estate, Fiscal Services, Human Resources, Information Technology, Legal, Operations, and River Basins divisions. This Biennial Budget would be allocated in approximately the proportions listed above for Appropriation 259.

Audit Findings

**DIVISION OF LEGISLATIVE AUDIT
AUDIT OF :
ARKANSAS GAME AND FISH COMMISSION
FOR THE YEAR ENDED JUNE 30, 2007**

Findings

Recommendations

The Agency did not record 207 hours of annual and holiday leave in the Arkansas Administrative Statewide Information System (AASIS) causing the leave balances of eight (8) employees to be overstated. As a result, one employee received an overpayment of \$369 on their leave payout when terminating employment.

Strengthen efforts to effectively train timekeepers and review time and leave records in accordance with the Agency's policies and procedures manual.

Employment Summary

	<u>Male</u>	<u>Female</u>	<u>Total</u>	<u>% of Total</u>
White Employees	408	130	538	94%
Black Employees	11	14	25	4%
Other Racial Minorities	6	1	7	2%
Total Minorities			32	6%
Total Employees			570	100%

(566 Employed as of 9-22-08)

POSITION USAGE REPORT - BY FISCAL YEAR

FY2006 - 2007					FY2007 - 2008					FY2008 - 2009							
Authorized in Act	Budgeted			Unbudgeted	% of Authorized Unused	Authorized in Act	Budgeted			Unbudgeted	% of Authorized Unused	Authorized in Act	Budgeted			Unbudgeted	% of Authorized Unused
	Filled	Unfilled	Total	Total			Filled	Unfilled	Total	Total			Filled	Unfilled	Total	Total	
590	565	29	594	-4	4.24%	598	576	22	598	0	3.68%	598	574	27	601	-3	4.01%

The Budgeted Number of Positions exceeds the Authorized Number due to Special Language authorizing transfers from the Agency Growth Pool during the 2007-2009 biennium.

POSITION USAGE REPORT - 3 YEAR AVERAGE

Agency	FY2008 - FY2009						3 YEAR AVERAGE (FY07, FY08, FY09)					
	Authorized in Act	Budgeted			Unbudgeted	% of Authorized Unused	Authorized in Act	Budgeted			Unbudgeted	% of Authorized Unused
		Filled	Unfilled	Total	Total			Filled	Unfilled	Total	Total	
0080 - AR GAME AND FISH COMMISSION	598	574	27	601	-3	4.01%	595	571	26	597	-2	4.03%

The Budgeted Number of Positions exceeds the Authorized Number due to Special Language authorizing transfers from the Agency Growth Pool during the 2007-2009 biennium.

Department Appropriation Summary

GAME AND FISH COMMISSION

SDG - Game Protection Fund

Appropriation / Program	Historical Data						Agency Request and Legislative Recommendation							
	2007-2008		2008-2009		2008-2009		2009-2010				2010-2011			
	Actual	Pos	Budget	Pos	Authorized	Pos	Agency	Pos	Legislative	Pos	Agency	Pos	Legislative	Pos
			(As of 8-31-08)											
259 Game and Fish Commission Operations	70,983,273	598	78,052,961	601	91,296,048	598	88,692,183	611			91,555,693	611		
33Y Gas Lease Revenue	0	0	3,000,000	0	3,000,000	0	34,500,000	0			21,500,000	0		
Total	70,983,273	598	81,052,961	601	94,296,048	598	123,192,183	611			113,055,693	611		

Funding Sources		%	(As of 8-31-08)	%				%		%		%
Fund Balances	6,630,709	7.9	15,061,583	13.3	*****	****	35,102,433	32.7			5,000,000	6.4
1/8% Conservation Tax Revenue	26,460,307	31.5	26,757,450	23.7	*****	****	27,736,773	25.9			28,751,939	36.5
Federal Funds	16,350,217	19.4	20,137,623	17.8	*****	****	21,000,000	19.6			21,000,000	26.7
Special Revenues	20,980,886	25.0	21,548,000	19.1	*****	****	21,544,000	20.1			21,544,000	27.4
Gas Lease Special Revenue	3,044,399	3.6	29,058,034	25.7	*****	****	985,000	0.9			1,970,000	2.5
Non-Revenue Receipts	12,578,338	15.0	5,323,520	4.7	*****	****	5,900,000	5.5			5,400,000	6.9
Other - Operating Reserve	(1,955,601)	(2.3)	(5,000,000)	(4.4)	*****	****	(5,000,000)	(4.7)			(5,000,000)	(6.4)
Total Funding	84,089,255	100	112,886,210	100	*****	****	107,268,206	100			78,665,939	100
Excess Appropriation/(Funding)	(13,105,982)		(31,833,249)		*****	****	15,923,977				34,389,754	
Grand Total	70,983,273		81,052,961		*****	****	123,192,183				113,055,693	

The Budget Number of Positions exceeds the Authorized Number due to Special Language authorizing transfers from the Agency Growth Pool during the 2007-2009 biennium.

Appropriation Summary

Appropriation:
Funding Sources:

259 - Operations
SDG - Game Protection Fund

Commitment Item	Historical Data			Agency Request & Legislative Recommendation			
	2007-2008	2008-2009	2008-2009	2009-2010		2010-2011	
	Actual	Budget	Authorized	Agency	Legislative	Agency	Legislative
		(As of 8/31/08)					
Regular Salaries 5010000	23,010,661	24,401,694	24,401,694	26,835,033		27,395,472	
<i># Positions</i>	598	601	598	611		611	
Extra Help 5010001	661,903	700,000	700,000	875,000		875,000	
<i># Extra Help</i>	109	170	170	185		185	
Personal Services Matching 5010003	7,463,099	7,444,000	8,199,486	8,699,003		8,818,831	
Uniform Allowance 5010016	819,723	843,400	885,000	885,000		885,000	
Maintenance & General Operation:							
Operating Expenses 5020002	24,201,106	30,785,218	27,980,762	33,324,487		34,863,746	
Travel-Conference Fees 5050009	272,526	381,185	421,827	400,245		419,306	
Professional Fees 5060010	2,315,562	3,155,564	4,170,006	3,813,344		3,971,121	
Capital Outlay 5120011	11,920,674	9,342,924	22,805,273	12,810,071		13,277,217	
Debt Service 5120019	318,019	998,976	1,732,000	1,050,000		1,050,000	
Total	70,983,273	78,052,961	91,296,048	88,692,183		91,555,693	

Funding Sources	2007-2008	2008-2009	2008-2009	2009-2010	2010-2011
Fund Balances	6,630,709	12,017,184	*****	5,000,000	5,000,000
1/8% Conservation Tax Revenue	26,460,307	26,757,450	*****	27,736,773	28,751,939
Federal Funds	16,350,217	20,137,623	*****	21,000,000	21,000,000
Special Revenues	20,980,886	21,548,000	*****	21,544,000	21,544,000
Gas Lease Special Revenue	0	0	*****	0	0
Non-Revenue Receipts	12,578,338	5,323,520	*****	5,400,000	5,400,000
Other - Operating Reserve	(1,955,601)	(5,000,000)	*****	(5,000,000)	(5,000,000)
Total Funding	81,044,856	80,783,777	*****	75,680,773	76,695,939
Excess Appropriation/(Funding)	(10,061,583)	(2,730,816)	*****	13,011,410	14,859,754
Grand Total	70,983,273	78,052,961	*****	88,692,183	91,555,693

The Budget Number of Positions exceeds the Authorized Number due to Special Language authorizing transfers from the Agency Growth Pool during the 2007-2009 biennium.

Appropriation Summary

Appropriation:
Funding Sources:

33Y Gas Lease Revenue
SDG - Game Protection Fund

Commitment Item	Historical Data			Agency Request & Legislative Recommendation			
	2007-2008	2008-2009	2008-2009	2009-2010		2010-2011	
	Actual	Budget	Authorized	Agency	Legislative	Agency	Legislative
		(As of 8/31/08)					
Regular Salaries 5010000	0	0	0	0		0	
<i># Positions</i>							
Extra Help 5010001	0	0	0	0		0	
<i># Positions</i>							
Personal Services Matching 5010003	0	0	0	0		0	
Uniform Allowance 5010016	0	0	0	0		0	
Maintenance & General Operation:							
Operating Expenses 5020002	0	0	0	7,000,000		7,000,000	
Travel-Conference Fees 5050009	0	0	0	0		0	
Professional Fees 5060010	0	0	0	500,000		500,000	
Capital Outlay 5120011	0	3,000,000	3,000,000	27,000,000		14,000,000	
Debt Service 5120019	0	0	0	0		0	
Total	0	3,000,000	3,000,000	34,500,000		21,500,000	

Funding Sources	2007-2008	2008-2009	2008-2009	2009-2010	2010-2011
Fund Balances	0	3,044,399	*****	30,102,433	0
1/8% Conservation Tax Revenue	0	0	*****	0	0
Federal Funds	0	0	*****	0	0
Special Revenues	0	0	*****	0	0
Gas Lease Special Revenue *	3,044,399	29,058,034	*****	985,000	1,970,000
Non-Revenue Receipts (SDG Fund Interest)	0	1,000,000	*****	500,000	100,000
Other - Operating Reserve	0	0	*****	0	0
Total Funding	3,044,399	33,102,433	*****	31,587,433	2,070,000
Excess Appropriation/(Funding)	(3,044,399)	(30,102,433)	*****	2,912,567	19,430,000
Grand Total	0	3,000,000	*****	34,500,000	21,500,000

* - The 2008-2009 Gas Lease Revenue amount has been reduced by \$488,870 for a correction to assess the 1.5% Special Revenue Fee on deposits made in 2007-2008 and 2008-2009. A new revenue code is being established on AASIS and it is anticipated the corrections to assess the special revenue fee will be done in September or October 2008.

Personal Services Summary - Position

Appropriation: 259 Operations

Funding Sources: SDG - Game Protection Fund

Agency Request and Executive Recommendation

Job	Pay Grade	2008-2009	2009-2010		2010-2011	
		Authorized	Agency	Executive	Agency	Executive
		Positions	Positions	Positions	Positions	Positions
9951 G & F DIRECTOR	9951	1	1	-	1	-
9618 G&F DEPUTY DIRECTOR	9618	3	3	-	3	-
9950 AGFC GENERAL COUNSEL	N903	1	1	-	1	-
2027 AGFC COLONEL	C129	1	1	-	1	-
928Z AGFC DIVISION CHIEF	C129	3	3	-	3	-
2303 INFORMATION SYSTEMS MANAGER	C128	1	1	-	1	-
1914 FISCAL DIVISION MANAGER	C127	1	1	-	1	-
1774 AGFC REAL ESTATE AND ENGINEER MANAGER	C126	1	1	-	1	-
2169 HUMAN RESOURCES ADMINISTRATOR	C126	1	1	-	1	-
R170 ATTORNEY SPECIALIST	C126	1	1	-	1	-
T080 GAME & FISH MAJOR	C126	3	3	-	3	-
1009 CONSERVATION PROGRAM MANAGER	C124	8	8	-	8	-
1743 EDUCATION PROGRAM MANAGER	C124	2	2	-	2	-
2294 INFORMATION SYSTEMS COORDINATOR	C124	1	1	-	1	-
299Z G&F ASSISTANT DIVISION CHIEF	C124	-	1	-	1	-
A127 ASSISTANT CONTROLLER	C124	2	2	-	2	-
R036 ATTORNEY	C124	1	1	-	1	-
T038 AGFC CAPTAIN	C124	14	14	-	14	-
0245 AGFC LIEUTENANT	C123	16	16	-	16	-
3266 PUBLIC INFORMATION MANAGER	C123	2	2	-	2	-
8676 AGFC OPERATIONS & FACILITY MANAGER	C123	1	1	-	1	-
T042 AGFC SERGEANT	C122	24	24	-	24	-
0034 ACCOUNTING COORDINATOR	C121	1	1	-	1	-
0547 AGFC BIOLOGIST PROGRAM SPECIALIST	C121	7	7	-	7	-
0625 AGFC LICENSING MANAGER	C121	1	1	-	1	-
0627 AGFC NATURE CENTER MANAGER	C121	4	4	-	4	-
2134 PERSONNEL MANAGER	C121	1	1	-	1	-
B014 PROFESSIONAL GEOLOGIST	C121	1	1	-	1	-
B017 BIOLOGIST SUPERVISOR	C121	25	25	-	25	-
D036 SOFTWARE SUPPORT ANALYST	C121	5	5	-	5	-
T040 AGFC CORPORAL	C121	120	120	-	120	-
3264 PUBLIC INFORMATION COORDINATOR	C120	1	1	-	1	-
D168 COMPUTER OPERATIONS COORDINATOR	C120	1	1	-	1	-
0633 EDUCATION PROGRAM COORDINATOR	C119	8	8	-	8	-
5222 AGFC WILDLIFE OFFICER 1ST CLASS	C119	1	1	-	1	-
B026 BIOLOGIST SPECIALIST	C119	34	34	-	34	-
D010 DATABASE ANALYST	C119	1	1	-	1	-
R488 GRANTS COORDINATOR	C119	1	2	-	2	-
0626 AGFC LICENSING SUPERVISOR	C118	2	2	-	2	-
1822 EXECUTIVE ASSISTANT TO THE DIRECTOR	C118	2	2	-	2	-
1937 FISCAL SUPPORT SUPERVISOR	C118	2	2	-	2	-
2820 NETWORK SUPPORT ANALYST	C118	2	2	-	2	-

Personal Services Summary - Position

Appropriation: 259 Operations

Funding Sources: SDG - Game Protection Fund

Agency Request and Executive Recommendation

Job	Pay Grade	2008-2009	2009-2010		2010-2011	
		Authorized	Agency	Executive	Agency	Executive
		Positions	Positions	Positions	Positions	Positions
3888 WEBSITE DEVELOPER	C118	2	2	-	2	-
E013 EDUCATION PROGRAM SPECIALIST	C118	18	23	-	23	-
T036 AGFC WILDLIFE OFFICER	C118	1	1	-	1	-
V007 REAL ESTATE OFFICER	C118	1	1	-	1	-
X398 SURVEYOR	C118	2	2	-	2	-
0962 COMPUTER SUPPORT ANALYST	C117	1	1	-	1	-
1702 EDITOR	C117	4	4	-	4	-
2173 HUMAN RESOURCES ANALYST	C117	3	3	-	3	-
2526 LEGAL SERVICES SPECIALIST	C117	-	1	-	1	-
2646 MAINTENANCE COORDINATOR	C117	2	2	-	2	-
4640 PRODUCTION ARTIST	C117	1	1	-	1	-
B022 BIOLOGIST	C117	58	59	-	59	-
E114 STAFF DEVELOPMENT COORDINATOR	C117	1	1	-	1	-
1019 CONSTRUCTION SUPERVISOR	C116	2	2	-	2	-
1755 EDUCATION & INSTRUCTION SPECIALIST	C116	5	6	-	6	-
3273 PUBLIC INFORMATION SPECIALIST	C116	1	1	-	1	-
3587 SKILLED TRADES SUPERVISOR	C116	1	1	-	1	-
A111 ACCOUNTANT I	C116	1	1	-	1	-
C020 COMMUNICATIONS SYSTEMS SUPERVISOR	C116	1	1	-	1	-
C037 TELECOMMUNICATIONS SUPERVISOR	C116	1	1	-	1	-
0196 ADMINISTRATIVE ANALYST	C115	2	2	-	2	-
0993 COMPUTER SUPPORT TECHNICIAN	C115	4	4	-	4	-
1012 CONSTRUCTION SPECIALIST	C115	6	6	-	6	-
1919 FISCAL SUPPORT ANALYST	C115	3	3	-	3	-
3591 SKILLED TRADESMAN	C115	5	5	-	5	-
G028 MAINTENANCE SUPERVISOR	C115	1	1	-	1	-
0763 CALIBRATION TECHNICIAN	C114	3	3	-	3	-
C015 TELECOMMUNICATIONS SPECIALIST	C114	8	8	-	8	-
E021 FIRING RANGE SPECIALIST	C114	1	2	-	2	-
N290 COMMERCIAL GRAPHIC ARTIST	C114	2	2	-	2	-
0333 ADMINISTRATIVE SUPPORT SUPERVISOR	C113	5	5	-	5	-
B114 NATURAL RESOURCES PROGRAM TECHNICIAN	C113	72	73	-	73	-
G161 MAINTENANCE TECHNICIAN	C113	5	5	-	5	-
K117 LEGAL SUPPORT SPECIALIST	C113	1	1	-	1	-
N355 PHOTOGRAPHER	C113	-	1	-	1	-
V030 INVENTORY CONTROL MANAGER	C113	1	1	-	1	-
0266 ADMINISTRATIVE SPECIALIST III	C112	17	17	-	17	-
1929 FISCAL SUPPORT SPECIALIST	C112	7	7	-	7	-
Y003 AUTO/DIESEL MECHANIC	C112	2	2	-	2	-
H035 FOOD PREPARATION SUPERVISOR	C111	1	1	-	1	-
Y085 PRINTER	C111	1	1	-	1	-

Personal Services Summary - Position

Appropriation: 259 Operations

Funding Sources: SDG - Game Protection Fund

Agency Request and Executive Recommendation

Job	Pay Grade	2008-2009	2009-2010		2010-2011	
		Authorized	Agency	Executive	Agency	Executive
		Positions	Positions	Positions	Positions	Positions
0255 ADMINISTRATIVE SPECIALIST II	C109	26	26	-	26	-
1945 FISCAL SUPPORT TECHNICIAN	C108	10	10	-	10	-
K065 MAIL SERVICES ASSISTANT	C105	1	1	-	1	-
TOTAL NUMBER OF POSITIONS		598	611	0	611	0

Personal Services Summary - New Positions

Appropriation: 259 Operations
Funding SDG - Game Protection Fund

Agency Request and Executive Recommendation

Job	Pay Grade	2009-2010		2010-2011	
		Agency	Executive	Agency	Executive
		Positions	Positions	Positions	Positions
299Z G&F ASSISTANT DIVISION CHIEF	C124	1	0	1	0
E013 EDUCATION PROGRAM SPECIALIST	C118	4	0	4	0
B022 BIOLOGIST	C117	1	0	1	0
1755 EDUCATION & INSTRUCTION SPECIALIST	C116	1	0	1	0
E021 FIRING RANGE SPECIALIST	C114	1	0	1	0
B114 NATURAL RESOURCES PROGRAM TECHNICIAN	C113	1	0	1	0
N355 PHOTOGRAPHER	C113	1	0	1	0
TOTAL NUMBER OF POSITIONS		10	0	10	0

Personal Services Summary - Unclassified

Appropriation: 259 Operations
Funding Sources: SDG - Game Protection Fund

Agency Request and Executive Recommendation

Job	2008-2009	2009-2010				2010-2011			
	Authorized	Agency		Executive		Agency		Executive	
	Salary	Salary	Pos	Salary	Pos	Salary	Pos	Salary	Pos
9951 G & F DIRECTOR	115,019	120,769	1	-	-	123,546	1	-	-
9618 G&F DEPUTY DIRECTOR	93,646	98,328	3	-	-	100,589	3	-	-
TOTAL NUMBER OF POSITIONS			4		-		4		-

Commitment Item Detail

Appropriation / Program 259 - Game and Fish Commission

Funding Sources: SDG - Game Protection Fund

Commitment Item	Expenditure Code	2007-2008	2007-2008	2008-2009	2009-2010	2010-2011
		Budget	Actual	Budget	Total	Total
Operating Expenses	1990160000 Low Val Equip (Mod)	582,953	487,650	(As of 8/31/08) 633,362	665,030	696,698
	5020001000 Postage	397,098	359,160	402,145	422,252	442,360
	5020002000 Telecomm Wired	452,530	429,786	456,875	479,719	502,563
	5020003000 Telecomm Wireless	313,300	344,571	355,285	373,049	390,814
	5020004000 Network Services Exp	326,569	324,823	370,650	389,183	407,715
	5020005000 Freight	58,200	38,627	57,550	60,428	63,305
	5030001000 Printing	1,017,314	767,814	827,103	868,458	909,813
	5030002000 Binding, Copy, Collate	19,050	14,771	27,400	28,770	30,140
	5030003000 Advertising Clipping Svc	272,302	258,398	342,550	359,678	376,805
	5030004000 Film Processing	17,550	16,030	28,420	29,841	31,262
	5030005000 02-Bldg & Grds Maint	889,270	845,699	760,714	798,750	836,785
	5030006000 Public Facility M&O	3,684,194	1,527,998	2,487,688	3,112,072	3,236,457
	5030007000 Hauling & Moving Exp	34,600	57,404	42,900	45,045	47,190
	5030008000 Office Equip Maint	99,850	89,609	103,900	109,095	114,290
	5030009000 Telephone Repair Svc	66,445	55,205	62,850	65,993	69,135
	5030010000 Pub Safety Eq Maint	57,875	51,060	79,875	83,869	87,863
	5030011000 Ind Inst Equip Maint	325,020	392,349	287,465	301,838	316,212
	5030012000 02 - Vehicle Maint	304,975	284,023	291,149	305,706	320,264
	5030013000 Auto Collision Repairs	32,500	24,564	65,000	68,250	71,500
	5030014000 Mar Avi Equip Maint	101,300	89,293	179,200	188,160	197,120
	5030015000 Research Equip Maint	13,950	9,943	24,500	25,725	26,950
	5030016000 DP Equip Maint	25,700	12,441	26,500	27,825	29,150
	5030017000 Software Maintenance	80,100	74,834	89,600	94,080	98,560
	5030018000 Oth Repair Servicing	7,500	21,229	1,600	1,680	1,760
	5040001000 Electricity	504,845	477,575	537,185	564,044	590,904
	5040002000 Electric Special Use	165,260	155,223	189,060	198,513	207,966
	5040003000 Water & Sewage	81,450	76,885	89,620	94,101	98,582
	5040004000 Natural Gas Propane	117,630	119,490	129,550	136,028	142,505
	5040005000 Rent of Facilities	168,012	183,161	203,695	213,880	224,065
	5040006000 Lease Private Land	880,170	824,181	866,742	910,079	953,416
	5040007000 Rent of Office Equip	121,625	103,013	113,132	118,789	124,445
	5040009000 Rent of Transportation	0	862	500	525	550
	5040010000 Rent Ind & Marine Equip	26,225	28,670	24,125	25,331	26,538
	5040011000 Other Rent & Leases	158,621	167,625	161,064	169,117	177,170
	5050001000 02 Mileage	10,310	3,569	7,860	8,253	8,646
	5050003000 02 Meals & Lodging	307,648	228,604	321,032	337,084	353,135
	5050005000 02 Common Carrier	30,375	7,216	34,010	35,711	37,411
	5050007000 02 Charter Travel	8,400	2,296	0	0	0
	5050009000 02 Ground Transport	2,900	1,569	3,900	4,095	4,290
	5050011000 02 Parking Fees	1,550	857	1,725	1,811	1,898
	5050013000 02 Other Travel Exp	5,100	2,235	4,850	5,093	5,335
	5050017000 02 Conf Seminar Fees	97,423	82,543	67,960	71,358	74,756
	5050020000 Board Memb Trav Exp	30,000	28,020	35,000	36,750	38,500
	5050021000 02 NonStateEmp Trav	12,100	10,803	12,900	13,545	14,190

Commitment Item Detail

Appropriation / Program 259 - Game and Fish Commission

Funding Sources: SDG - Game Protection Fund

Commitment Item	Expenditure Code	2007-2008	2007-2008	2008-2009	2009-2010	2010-2011
		Budget	Actual	Budget	Total	Total
Operating Expenses	5070001000 Surety & Perf. Bonds	0	479	(As of 8/31/08) 160	168	176
	5070002000 Vehicle Insurance	205,900	142,512	206,200	216,510	226,820
	5070003000 Bld Contents Ins	92,000	92,193	112,000	117,600	123,200
	5070005000 Student Accident Ins	0	12,379	5,000	5,250	5,500
	5070006000 General Liability Ins	2,500	2,444	2,500	2,625	2,750
	5070007000 Other Insurance	2,000	100	2,000	2,100	2,200
	5080001000 M&R Service Fees	0	23	0	0	0
	5080002000 Bank Service Charges	20,100	394	20,100	21,105	22,110
	5080003000 Credit Card Disc Fee	30,450	27,802	30,600	32,130	33,660
	5080006000 Assoc Member Dues	83,201	68,657	84,230	88,442	92,653
	5080007000 Tuition & Course Mat'ls	63,100	33,259	75,523	79,299	83,075
	5080008000 Air Observation	174,950	188,477	183,500	192,675	201,850
	5080009000 Janitorial Service	184,900	186,021	205,900	216,195	226,490
	5080010000 Laundry Uniform Svc	9,750	7,600	7,750	8,138	8,525
	5080011000 02-Contract Food Service	85,745	61,815	92,650	97,283	101,915
	5080013000 Security Services	84,950	78,658	106,840	112,182	117,524
	5080014000 Trash Pickup Service	115,646	67,440	100,776	105,815	110,854
	5080016000 Temp Employ Service	61,890	40,897	46,750	49,088	51,425
	5080019000 Veh Lic Title Fees	32,951	31,628	36,166	37,974	39,783
	5080020000 Enforcement Invest Exp	20,000	6,572	20,000	21,000	22,000
	5080022000 Other Expenses Svc	1,169,573	1,123,588	1,295,385	1,360,154	1,424,924
	5090001000 Road Public Area Mat's	3,036,012	1,064,874	2,064,244	2,167,456	2,270,668
	5090002000 Natural Resource Supp's	409,367	443,044	426,189	447,498	468,808
	5090003000 Special Purpose Supp's	247,445	326,169	237,883	249,777	261,671
	5090004000 Tires	200,850	182,090	178,000	186,900	195,800
	5090005000 Fuel Purchases	2,120,445	2,177,729	2,465,522	2,588,798	2,712,074
	5090006000 Office Supplies	408,564	314,633	379,178	398,137	417,096
	5090007000 Educ. Supplies & Mat'ls	340,420	229,530	305,525	320,801	336,078
	5090009000 Recreation Supp Mat'ls	13,650	12,165	20,150	21,158	22,165
	5090010000 Cultural Supps Mat'ls	700	33	200	210	220
	5090011000 Photo Supps Mat'ls	58,005	48,360	33,100	34,755	36,410
	5090012000 Architect Draft Supplies	4,100	795	3,800	3,990	4,180
	5090013000 Public Safety Supplies	201,520	339,027	234,140	245,847	257,554
	5090014000 Drugs & Medicines	28,855	33,529	33,155	34,813	36,471
	5090015000 Health Lab Supplies	17,500	17,101	29,200	30,660	32,120
	5090016000 Shop Indust Supplies	136,775	151,156	139,875	146,869	153,863
	5090017000 Animal Purch NonCap	36,250	44,659	96,950	101,798	106,645
	5090018000 Subscriptions Pubs	63,589	75,315	58,445	61,367	64,290
	5090019000 Food Purchases	101,815	79,478	100,040	105,042	110,044
	5090020000 02-Clothing & Rel. Item	94,510	82,414	107,850	113,243	118,635
5090021000 Linen Supplies	3,450	1,276	5,050	5,303	5,555	
5090022000 02-Kit,Jan,House Supp's	96,850	81,951	94,250	98,963	103,675	
5090023000 Seed Fert Cont Agent	573,180	541,635	555,923	583,719	611,515	
5090024000 Feed Animals/Livestock	671,500	676,103	778,930	817,877	856,823	

Commitment Item Detail

Appropriation / Program 259 - Game and Fish Commission

Funding Sources: SDG - Game Protection Fund

Commitment Item	Expenditure Code	2007-2008	2007-2008	2008-2009	2009-2010	2010-2011
		Budget	Actual	Budget	Total	Total
Operating Expenses	5090025000 Agri Hort YWL Supplies	67,395	67,602	(As of 8/31/08) 466,455	489,778	513,101
	5090026000 DP Supplies	156,375	172,768	165,100	173,355	181,610
	5090027000 Software/Licenses	268,500	263,846	257,800	270,690	283,580
	5090028000 02 PurResale NonInv	524,519	357,642	560,339	588,356	616,373
	5090030000 Other Comm Mat Supp's	5,000	3,748	5,000	5,250	5,500
	5100005000 02 Assist Grants Aid	8,935,924	4,987,761	7,460,119	8,333,125	8,706,131
	5110001000 Penalties and Interest	0	101	0	0	0
	5110002000 02 Other Refunds	101,555	108,104	48,350	50,768	53,185
	5110005000 Non Salary Award	0	22,000	0	0	0
	5110006000 Improve Dist Taxes	2,200	1,694	2,250	2,363	2,475
	5110007000 Sale & Use Tax Cl 02	0	11,536	0	0	0
	5110008000 License & Permits	25,410	22,375	26,900	28,245	29,590
	5110009000 Personal Prop Tax	710	395	610	641	671
	5110010000 Real Property Tax	1,800	3,852	1,800	1,890	1,980
	5120010000 Imprest Fd Establish	675	0	675	709	743
	Total		33,304,810	24,201,106	30,785,218	33,324,487
Travel-Conferences	5050002000 09 Mileage	12,900	1,550	9,300	9,765	10,230
	5050004000 09 Meals & Lodging	227,132	164,238	189,475	198,949	208,423
	5050006000 09 Common Carrier	75,950	35,137	75,300	79,065	82,830
	5050008000 09 Charter Travel	8,000	0	1,000	1,050	1,100
	5050010000 09 Ground Transport	12,850	7,236	12,425	13,046	13,668
	5050012000 09 Parking Fees	3,260	2,688	3,535	3,712	3,889
	5050014000 09 Other Travel Exp	3,425	1,118	3,275	3,439	3,603
	5050018000 09 Conf Seminar Fees	100,364	58,921	85,875	90,169	94,463
	5050022000 09 NonStateEmp Trav	1,250	1,638	1,000	1,050	1,100
Total		445,131	272,526	381,185	400,245	419,306
Prof. Fees & Services	5060001000 Professional Adm Fee	2,073,774	1,444,394	1,877,864	2,471,757	2,565,650
	5060002000 Eng & Architect Fees	66,600	40,358	37,350	39,218	41,085
	5060003000 Legal Fees	115,400	90,686	122,475	128,599	134,723
	5060004000 Lien & Title Search Fees	800	695	0	0	0
	5060005000 Medical Fees	17,600	13,420	12,800	13,440	14,080
	5060006000 Lab Diagnostic Svc	38,100	29,789	43,000	45,150	47,300
	5060007000 Educ Honorarium Fees	20,650	11,340	31,350	32,918	34,485
	5060009000 Comp Set-Up Artwork	41,475	45,272	40,950	42,998	45,045
	5060010000 Data Processing Svcs	840,500	639,608	989,775	1,039,264	1,088,753
Total		3,214,899	2,315,562	3,155,564	3,813,344	3,971,121
Capital Outlay	1990100000 Land (Modified)	501,650	454,750	166,675	175,009	183,343
	1990120000 Easements	100,000	106,243	0	0	0
	1991000000 Infrastructure	76,514	76,624	0	0	0
	1990150000 Equipment (Modified)	2,607,029	1,885,079	2,761,498	2,899,573	3,037,648
	1991100000 Assets Under Construction	12,505,517	9,397,978	6,414,751	9,735,489	10,056,226
Total		15,790,710	11,920,674	9,342,924	12,810,071	13,277,217

Commitment Item Detail

Appropriation / Program 259 - Game and Fish Commission

Funding Sources: SDG - Game Protection Fund

Commitment Item	Expenditure Code	2007-2008	2007-2008	2008-2009	2009-2010	2010-2011
		Budget	Actual	Budget	Total	Total
Debt Service	5120001000 Debt Service Principal	0	0	(As of 8/31/08) 415,000	455,000	470,000
	5120002000 Debt Service Interest	527,300	318,019	565,843	577,000	562,000
	5120003000 D.S. Paying Agent Fees	0	0	18,133	18,000	18,000
	Total	527,300	318,019	998,976	1,050,000	1,050,000
	TOTAL	53,282,850	39,027,887	44,663,867	51,398,147	53,681,390

Commitment Item Detail

Appropriation / Program 33Y Gas Lease Revenues

Funding Sources: SDG - Game Protection Fund

Commitment Item	Expenditure Code	2007-2008	2007-2008	2008-2009	2009-2010	2010-2011
		Budget	Actual	Budget	Total	Total
Operating Expenses	5030006000 Public Facility M&O	0	0	(As of 8/31/08) 0	2,000,000	2,000,000
	5090001000 Road Public Area Mat's	0	0	0	2,000,000	2,000,000
	5090003000 Special Purpose Supp's	0	0	0	200,000	200,000
	5090007000 Educ. Supplies & Mat'ls	0	0	0	100,000	100,000
	5090013000 Public Safety (Ammunition)	0	0	0	200,000	200,000
	5100005000 02 Assist Grants Aid	0	0	0	2,500,000	2,500,000
	Total	0	0	0	7,000,000	7,000,000
Travel-Conferences	5050004000 09 Meals & Lodging	0	0	0	0	0
	5050018000 09 Conf Seminar Fees	0	0	0	0	0
	Total	0	0	0	0	0
Prof. Fees & Services	5060001000 Professional Adm Fee	0	0	0	100,000	100,000
	5060002000 Eng & Architect Fees	0	0	0	400,000	400,000
	Total	0	0	0	500,000	500,000
Capital Outlay	1990100000 Land (Modified)	0	0	1,000,000	2,000,000	2,000,000
	1990120000 Easements	0	0	1,000,000	23,000,000	10,000,000
	1991100000 Assets Under Construction	0	0	1,000,000	2,000,000	2,000,000
	Total	0	0	3,000,000	27,000,000	14,000,000
Debt Service	5120001000 Debt Service Principal	0	0	0	0	0
	5120002000 Debt Service Interest	0	0	0	0	0
	5120003000 D.S. Paying Agent Fees	0	0	0	0	0
	Total	0	0	0	0	0
	TOTAL	0	0	3,000,000	34,500,000	21,500,000

2009 - 2011 REQUEST FOR SPECIAL LANGUAGE IN APPROPRIATION

AGENCY: 0080 AR GAME AND FISH COMMISSION

ACT#: 1240

SECTION#: 4

CURRENT SPECIAL LANGUAGE (WITH AGENCY REQUEST)

EXECUTIVE RECOMMENDATION

ESTABLISHMENT OF A "GROWTH POOL". To address needs emerging from federal, state, and local initiatives or needs affecting the role and scope of Arkansas Game and Fish Commission programs and adequate staffing levels, the Arkansas Game and Fish Commission shall establish and maintain for the ~~2007-2009~~ 2009-2011 biennium a pool of ten (10) classified positions, payable from funds generated from salary savings or other sources and appropriated herein for such purposes. These positions are to be used by the Arkansas Game and Fish Commission in the absence of regularly authorized classified positions to fulfill this need. The Arkansas Game and Fish Commission shall provide justification to the Department of Finance and Administration's Office of Personnel Management (OPM) for the need to allocate titles from this "growth pool". No classifications will be assigned to the pool until such time as specific positions are requested by the Arkansas Game and Fish Commission, recommended by OPM and reviewed by the Arkansas Legislative Council or Joint Budget Committee.

The provisions of this section shall be in effect only from July 1, ~~2007~~ 2009 through June 30, ~~2009~~ 2011.

2009 - 2011 REQUEST FOR SPECIAL LANGUAGE IN APPROPRIATION

AGENCY: 0080 AR GAME AND FISH COMMISSION

ACT#: 1240

SECTION#: 5

CURRENT SPECIAL LANGUAGE (WITH AGENCY REQUEST)

EXECUTIVE RECOMMENDATION

PROFESSIONAL CERTIFICATION. The Arkansas Game and Fish Commission is hereby authorized, after prior review by the Arkansas Legislative Council to grant a two percent (2%) increase to any full-time, certified Enforcement employee upon completion of the next higher certification level (Intermediate, Advanced, or Senior). These pay increases will be awarded beginning with the first bi-weekly pay period following submission of documented proof of such certification to the Commission Personnel Office, provided the full-time, certified Enforcement employee's most recent performance evaluation results in a satisfactory rating. Officers not obtaining a satisfactory performance evaluation rating will be granted the pay increase on their next eligibility date, provided their new evaluation is satisfactory. New employees and probationary employees shall be eligible for this pay increase after their probationary period expires, provided the above requirements are met. Employees being compensated at the maximum of their assigned grade shall be eligible for the two percent (2%) increase in a lump sum payment, and such payment shall not be construed as exceeding the maximum salary for the grade.

The provisions of this section shall be in effect only from July 1, ~~2007~~ 2009 through June 30, ~~2009~~ 2011.

1
2009 - 2011 REQUEST FOR SPECIAL LANGUAGE IN APPROPRIATION

AGENCY: 0080 AR GAME AND FISH COMMISSION

ACT#: 1240

SECTION#: 6

CURRENT SPECIAL LANGUAGE (WITH AGENCY REQUEST)

EXECUTIVE RECOMMENDATION

PAYMENT OF REWARDS. Payment of rewards shall be from the Game Protection Fund from the Commission's Maintenance and General Operation appropriation as herein appropriated in Section 3, Item No. (05)(A).

The provisions of this section shall be in effect only from July 1, 2007 2009 through June 30, ~~2009~~ 2011.

2009 - 2011 REQUEST FOR SPECIAL LANGUAGE IN APPROPRIATION

AGENCY: 0080 AR GAME AND FISH COMMISSION

ACT#: 1240

SECTION#: 7

CURRENT SPECIAL LANGUAGE (WITH AGENCY REQUEST)

EXECUTIVE RECOMMENDATION

PROFESSIONAL CERTIFICATIONS. The Arkansas Game and Fish Commission is hereby authorized, after prior review by the Arkansas Legislative Council, to grant a six percent (6%) increase to any regular salaried biologist possessing or acquiring professional certification from the Wildlife Society or the American Fisheries Society during the ~~2007-2009~~ 2009-2011 biennium. This pay increase will be awarded beginning with the first bi-weekly pay period following review by the Legislative Council, provided the biologist's most recent performance evaluation results in a satisfactory rating. Biologists not obtaining a satisfactory performance evaluation rating will be granted the pay increase on their next eligibility date, provided their new evaluation is satisfactory. New employees and probationary employees shall be eligible for this pay increase after their probationary period expires, provided the above requirements are met. Employees possessing or obtaining the pay increase authorized herein shall not be eligible for a second incentive increase upon obtaining a second professional certification from the Wildlife Society or The American Fisheries Society. Employees being compensated at the maximum of their assigned grade shall be eligible for the six percent (6%) increase in a lump sum payment, and such payment shall not be construed as exceeding the maximum salary for the grade.

The provisions of this section shall be in effect only from July 1, ~~2007~~ 2009 through June 30, ~~2009~~ 2011.

2009 – 2011 REQUEST FOR SPECIAL LANGUAGE IN APPROPRIATION

AGENCY: 0080 AR GAME AND FISH COMMISSION

ACT#: 1240

SECTION#: 8

CURRENT SPECIAL LANGUAGE (WITH AGENCY REQUEST)

EXECUTIVE RECOMMENDATION

ASSISTANT WILDLIFE OFFICER SUPERVISORS (AGFC LIEUTENANTS). Any ~~Wildlife Officer III~~ AGFC CORPORAL serving in the capacity of Assistant Wildlife Officer Supervisor (AGFC Lieutenant) shall be eligible for six percent (6%) of additional compensation within the grade during the period of time in which said employee occupies the position. Employees shall be eligible for the additional compensation of six percent (6%) of their current salary upon assuming responsibility, and this amount shall not be construed as exceeding the line item salary. The Game and Fish Commission shall certify to the Chief Fiscal Officer the assignment of duties of each employee in this position, and the location and reason for the assignment.

The provisions of this section shall be in effect only from July 1, 2007 2009 through June 30, ~~2009~~ 2011.

2009 – 2011 REQUEST FOR SPECIAL LANGUAGE IN APPROPRIATION

AGENCY: 0080 AR GAME AND FISH COMMISSION

ACT#: 1240

SECTION#: 9

CURRENT SPECIAL LANGUAGE (WITH AGENCY REQUEST)

EXECUTIVE RECOMMENDATION

FIELD TRAINING OFFICERS (AGFC SERGEANTS). Any ~~Wildlife Officer III~~ AGFC Corporal serving in the capacity of Field Training Officer (AGFC Sergeant) shall be eligible for six percent (6%) of additional compensation within the grade during the period of time in which said employee occupies the position. Employees shall be eligible for the additional compensation of six percent (6%) of their current salary upon assuming responsibility, and this amount shall not be construed as exceeding the line item salary. The Game and Fish Commission shall certify to the Chief Fiscal Officer the assignment of duties of each employee in this position, and the location and reason for the assignment.

The provisions of this section shall be in effect only from July 1, ~~2007~~ 2009 through June 30, ~~2009~~ 2011.

2009 – 2011 REQUEST FOR SPECIAL LANGUAGE IN APPROPRIATION

AGENCY: 0080 AR GAME AND FISH COMMISSION

ACT#: 1240

SECTION#: 10

CURRENT SPECIAL LANGUAGE (WITH AGENCY REQUEST)

EXECUTIVE RECOMMENDATION

K-9 OFFICERS AND SEARCH & RECOVERY DIVE TEAM OFFICERS AND AIR SEARCH & PATROL HELICOPTER PILOT. Any ~~Wildlife Officer I, II, or III~~ AGFC Wildlife Officer, AGFC Wildlife Officer 1st Class, AGFC Corporal, AGFC Sergeant or AGFC Lieutenant serving in the capacity of K-9 Officer or Search & Recovery Dive Team Officer or Air Search & Patrol helicopter pilot shall be eligible for six percent (6%) of additional compensation within the grade during the period of time in which said employees occupies the position. Employees shall be eligible for the additional compensation of six percent (6%) of their current salary upon assuming responsibility, and this amount shall not be construed as exceeding the line item salary. The Game and Fish Commission shall certify to the Chief Fiscal Officer the assignment of duties of each employee in this position, and the location and reason for the assignment.

The provisions of this section shall be in effect only from July 1, ~~2007~~ 2009 through June 30, ~~2009~~ 2011.

2009 - 2011 REQUEST FOR SPECIAL LANGUAGE IN APPROPRIATION

AGENCY: 0080 AR GAME AND FISH COMMISSION

ACT#: 1240

SECTION#: 11

CURRENT SPECIAL LANGUAGE (WITH AGENCY REQUEST)

EXECUTIVE RECOMMENDATION

PROFESSIONAL CERTIFICATION. The Arkansas Game and Fish Commission is hereby authorized, after prior review by the Arkansas Legislative Council, to grant a six percent (6%) increase to any regular salaried biologist serving in the capacity of a forester, who possesses or acquires professional certification from the Society of American Foresters and registration with the Arkansas State Board of Registration for Foresters during the ~~2007-2009~~ 2009-2011 biennium. This pay increase will be awarded beginning with the first bi-weekly pay period following review by the Legislative Council, provided the biologist's most recent performance evaluation results in a satisfactory rating. Biologists not obtaining a satisfactory performance evaluation rating will be granted the pay increase on their next eligibility date, provided their new evaluation is satisfactory. New employees and probationary employees shall be eligible for this pay increase after their probationary period expires, provided the above requirements are met. Employees being compensated at the maximum of their assigned grade shall be eligible for the six percent (6%) increase in a lump sum payment, and such payment shall not be construed as exceeding the maximum salary for the grade.

The provisions of this section shall be in effect only from July 1, ~~2007~~ 2009 through June 30, ~~2009~~ 2011.

2009 - 2011 REQUEST FOR SPECIAL LANGUAGE IN APPROPRIATION

AGENCY: 0080 AR GAME AND FISH COMMISSION

ACT#: 1240

SECTION#: 12

CURRENT SPECIAL LANGUAGE (WITH AGENCY REQUEST)

EXECUTIVE RECOMMENDATION

EXTRA HELP RESTRICTION. No employee of the Arkansas Game and Fish Commission who is employed as extra help may receive an amount to exceed eighty-five percent (85%) of the maximum annual salary for a comparable position as authorized under § 21-5-201 et seq. during any fiscal year, nor shall such an employee be employed for a period of time to exceed one thousand eight hundred (1,800) hours in any single fiscal year.

2009 – 2011 REQUEST FOR SPECIAL LANGUAGE IN APPROPRIATION

AGENCY: 0080 AR GAME AND FISH COMMISSION

**ACT#: NEW
Appropriation: 259**

SECTION#: NEW1

NEW SPECIAL LANGUAGE (AGENCY REQUEST)

EXECUTIVE RECOMMENDATION

SPECIAL LANGUAGE. NOT TO BE INCORPORATED INTO THE ARKANSAS CODE NOR PUBLISHED SEPARATELY AS SPECIAL, LOCAL AND TEMPORARY LAW.

PROFESSIONAL CERTIFICATION. The Arkansas Game and Fish Commission is hereby authorized, after prior review by the Arkansas Legislative Council, to grant a two percent (2%) increase to any Education Program Specialist, Education Program Coordinator or AGFC Nature Center Manager upon completion of the next higher certification level (Certified Interpretive Planner, Certified Interpretive Manager, Certified Heritage Interpreter) from the National Association of Interpretation. This pay increase will be awarded beginning with the first bi-weekly pay period following submission of documented proof of such certification to the Commission Human Resources Office, provided the employee's most recent performance evaluation results in a satisfactory rating. Employees not obtaining a satisfactory performance evaluation rating will be granted the pay increase on their next eligibility date, provided their new evaluation is satisfactory. New employees and probationary employees shall be eligible for this pay increase after their probationary period expires, provided the above requirements are met. Employees being compensated at the maximum of their assigned grade shall be eligible for the two percent (2%) increase in a lump sum payment, and such payment shall not be construed as exceeding the maximum salary for the grade.

The provisions of this section shall be in effect only from July 1, 2009 through June 30, 2011.

2009 – 2011 REQUEST FOR SPECIAL LANGUAGE IN APPROPRIATION

AGENCY: 0080 AR GAME AND FISH COMMISSION

ACT#: NEW

SECTION#: NEW2

Appropriation: 259

NEW SPECIAL LANGUAGE (AGENCY REQUEST)

EXECUTIVE RECOMMENDATION

SPECIAL LANGUAGE. NOT TO BE INCORPORATED INTO THE ARKANSAS CODE NOR PUBLISHED SEPARATELY AS SPECIAL, LOCAL AND TEMPORARY LAW.

PROFESSIONAL CERTIFICATIONS. The Arkansas Game and Fish Commission is hereby authorized, after prior review by the Arkansas Legislative Council, to grant a six percent (6%) increase to any regular salaried information technology employee who possesses or acquires one of the following professional certifications from the Microsoft Corporation: Microsoft Certified Database Administrator (MCDBA) or Microsoft Certified Systems Engineer (MCSE) or Microsoft Certified Systems Administrator (MCSA) or Microsoft Certified Desktop Support Technician (MCDST). This pay increase will be awarded beginning with the first bi-weekly pay period following review by the Legislative Council, provided the employee's most recent performance evaluation results in a satisfactory rating. Employees not obtaining a satisfactory performance evaluation rating will be granted the pay increase on their next eligibility date, provided their new evaluation is satisfactory. New employees and probationary employees shall be eligible for this pay increase after their probationary period expires, provided the above requirements are met. Employees being compensated at the maximum of their assigned grade shall be eligible for the six percent (6%) increase in a lump sum payment, and such payment shall not be construed as exceeding the maximum salary for the grade.

The provisions of this section shall be in effect only from July 1, 2009 through June 30, 2011.

2009 – 2011 REQUEST FOR SPECIAL LANGUAGE IN APPROPRIATION

AGENCY: 0080 AR GAME AND FISH COMMISSION

ACT#: NEW

SECTION#: NEW3

Appropriation: 33Y

NEW SPECIAL LANGUAGE (AGENCY REQUEST)

EXECUTIVE RECOMMENDATION

SPECIAL LANGUAGE. NOT TO BE INCORPORATED INTO THE ARKANSAS CODE NOR PUBLISHED SEPARATELY AS SPECIAL, LOCAL AND TEMPORARY LAW.

CARRY FORWARD PROVISION. Any unexpended balance remaining on June 30, 2010 in the appropriation authorized for Gas Lease Revenue for Operating Expenses, Conference & Travel Expenses, Professional Fees, and Capital Outlay shall be transferred by the Chief Fiscal Officer and the Auditor of State and made available for the same purposes for the fiscal year beginning July 1, 2010 and ending June 30, 2011.

Any carry forward of unexpended balance of appropriation as authorized herein, may be carried forward under the following conditions:

(1) Prior to June 30, 2009 the Agency shall by written statement set forth its reason(s) for the need to carry forward said appropriation to the Department of Finance and Administration Office of Budget;

(2) The Department of Finance and Administration Office of Budget shall report to the Arkansas Legislative Council all amounts carried forward from the first fiscal year of the biennium to the second fiscal year of the biennium by the September Arkansas Legislative Council or Joint Budget Committee meeting in the second fiscal year of the biennial period which report shall include the name of the Agency, Board, Commission or Institution and the amount of the appropriation carried forward from the first fiscal year to the second fiscal year, the program name or line item, the funding source of that appropriation and a copy of the written request set forth in (1) above;

(3) Each Agency, Board, Commission or Institution shall provide a written report to the Arkansas Legislative Council or Joint Budget Committee containing all information set forth in item (2) above, along with a written statement as to the current status of the project, contract, purpose etc. for which the carry forward was originally requested no later than thirty (30) days prior to the time the Agency, Board, Commission or Institution presents its budget request to the Arkansas Legislative Council/Joint Budget Committee; and

(4) Thereupon, the Department of Finance and Administration shall include all information obtained in item (3) above in the biennial budget manuals and/or a statement of non-compliance by the Agency, Board, Commission or Institution.

The provisions of this section shall be in effect only from July 1, 2009 through June 30, 2011.