

ARKANSAS BUDGET SYSTEM AGENCY HISTORY AND ORGANIZATION

The mission of the Arkansas Game and Fish Commission is to wisely manage all the fish and wildlife resources of Arkansas while providing maximum enjoyment for the people.

The Commission attained its present constitutional status by Amendment 35 of 1944 to the State Constitution. This amendment established the Commission's responsibility and authority for the "...control, management, restoration, conservation and regulation of birds, fish, game and wildlife resources of the State...". This responsibility pertains to nongame species as well as game species of fish and wildlife. When wildlife habitat is maintained and improved to sustain healthy fish and wildlife populations, the entire citizenry of Arkansas is the benefactor. The Commission has a perpetual goal to improve hunting and fishing opportunities for the sportsmen of the State, but it also realizes that a healthy environment for our fish and wildlife assures a healthy environment for the citizens of Arkansas. Amendment 75 of 1996 to the State Constitution established the one-eighth of one percent Conservation Sales Tax, and distributes forty-five percent of the net collections to the Commission, forty-five percent to the Department of Parks and Tourism, nine percent to the Department of Arkansas Heritage, and one percent to Keep Arkansas Beautiful. Commission activities are financed primarily through the Conservation Sales Tax, the sale of hunting and fishing licenses, tags, and permits and by Federal Aid funding. General Revenue funds are not used for Commission programs.

The Commission is composed of eight members; seven Governor-appointed members who serve regular seven-year staggered terms, and an ex-officio member who is chairman of the Department of Biological Sciences at the University of Arkansas. The Commission selects and employs an Executive Secretary, or Director, who is delegated broad administrative responsibilities for over-seeing the daily operation of the agency and carrying out directives of the Commission. The Director's staff includes two Assistant Directors, Legal Counsel, Senior Fisheries Biologist, and Division Chiefs over nine functional divisions listed below:

The Fisheries Management Division manages the state's fisheries populations; manages lakes, reservoirs and streams for public fishing; acquires, develops and maintains stream access sites, lakes, nursery ponds and hatcheries; conducts an intensive trout management program; and provides fisheries management advice. The Division conducts fish habitat condition investigations and an on-going research program to measure fish population trends, determine limiting factors and develop better management techniques. The mobile aquarium program is a very successful tool for educating the public on fisheries resources.

The Wildlife Management Division has the responsibility of managing the state's wildlife populations. Modern wildlife management practices consist largely of establishing hunting season regulations, habitat improvement through forest management, development of food resources, construction and maintenance of structures for water control, and the management and control of wildlife populations. Wildlife Management Areas contain a number of roads, bridges, boat ramps, and parking areas to assist sportsmen in accessing the Areas for wildlife-related recreational purposes. The Division works with landowners to stimulate wildlife habitat development on privately-owned land.

ARKANSAS BUDGET SYSTEM AGENCY HISTORY AND ORGANIZATION

The Education and Outreach Division manages the Hunter Education, Boating Education, Project WILD, Hooked On Fishing Not On Drugs (HOFNOD), and Aquatic Resources programs which serve as vehicles for teaching not only safe hunting and boating, but all aspects of wildlife conservation and management. This Division operates Conservation Education Centers at the Rick Evans/Grandview Prairie center, the Cooks Lake/Potlatch center, and the Crooked Creek center. The Delta Rivers Nature Center in Pine Bluff will open in the summer of 2001 and three other nature centers around the state will be built in future years. Other services include educational publications, and exhibits for fairs and other shows

The Enforcement Division plays a vital role in the success of the Commission's programs by enforcing the regulations for protection and enjoyment of fish, game, and nongame resources. The Commission has implemented a Wildlife Officers training program to meet the high standards required in the performance of their duties. Wildlife Officers assist in other programs of the Commission including Acres for Wildlife, Hunter Education, Boating Education, and are an important link between the Commission and the public. Wildlife Officers enforce boating laws, have full police authority, and assist other law enforcement agencies in criminal matters. They are trained First Responders and participate in land and water search and rescue operations.

The Communications Division is responsible for managing all internal and external communications efforts of the agency. These duties include the publication of *Arkansas Wildlife* magazine, production of news releases and other publications, management of the agency webpage and intranet site, electronic media efforts and contact with local, state and national press outlets. In addition, staff members produce a monthly employee newsletter and an e-newsletter three times a week. The Division plays a key role in securing information reflecting public perception and opinion. Various staff members also serve on the Director's Legislative Liaison Team.

The Fiscal Services Division administers the General Accounting, Licensing, Budgeting, Disbursing, Purchasing, and Federal Aid Accounting sections. The License Section deals with approximately 1,000 license dealers who make licenses, tags and permits available locally.

The Human Resources Division is responsible for personnel management functions, employee recruitment and training, and payroll processing.

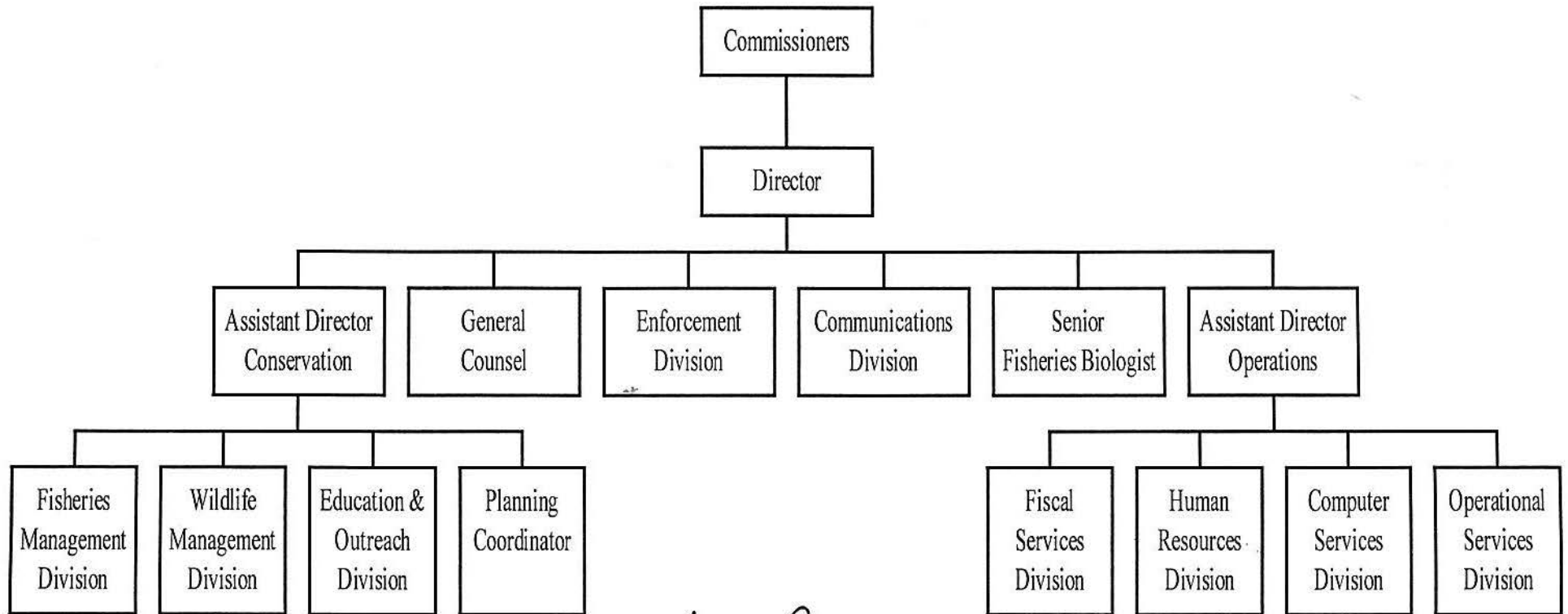
The Computer Services Division provides data processing services via a statewide PC network system for all divisions and operates the agency's telephone communication system.

The Operational Services Division is responsible for federal aid coordination; land purchases; construction projects; Marine Fuel Tax projects; boating law administration; vehicle fleet operations; building services; regional offices; and acts as a liaison with Federal and State agencies involved in evaluating and monitoring fish and wildlife impacts of major construction activity.

Arkansas Game & Fish Commission

Organization Chart

August 17, 2000




Hugh C. Durham, IV - Director

**ARKANSAS BUDGET SYSTEM
AGENCY PROGRAM COMMENTARY
2001 - 2003**

The Arkansas Game and Fish Commission is submitting its second biennium budget request since voters approved the 1/8 Cent Conservation Sales Tax (Amendment #75 of 1996). Historic concerns about inadequate revenue and cash flow have been replaced by needs for a long-term capital improvements program, greater resolution in program evaluation and tracking, and a management information system that facilitates public accountability and input. Changes are being made in our management and information systems to address these needs. Revenues from the 1/8 Cent Conservation Sales Tax are meeting projections, and are being integrated through the Plan for Conservation (PFC) into all programs. The new revenue allows the Commission to begin to address a backlog of maintenance needs and address operational needs for the first time in decades, while allocating a portion to capital improvement commitments in the Plan for Conservation, e.g., four Nature Centers around the state.

As in previous biennia, the agency's budget request asks for appropriation in excess of anticipated funding. This is done to ensure there is sufficient appropriation in all the appropriation characters to allow the Commission the flexibility to adjust priorities for the agency as strategic planning advances or as unanticipated opportunities or needs arise.

In 1998-99, the agency sold over 226,000 hunting and fishing licenses to non-residents visiting Arkansas and over 702,000 licenses to Arkansas residents. In 1996, the most recent year for which data is available, state residents and non-residents spent \$1.2 billion on wildlife-associated recreation in Arkansas (1996 National Survey of Fishing, Hunting and Wildlife Associated Recreation, USFWS, 1997). More than 20,000 full and part-time jobs are supported in the Arkansas economy as a result of the many rounds of spending resulting from original retail purchases by hunters, fishers and wildlife watchers (Southwick Associates).

Annually, the agency prepares an internal operating budget detailed by functional operating divisions, expense categories, and Plan for Conservation categories. The 2000-01 Fiscal Year internal budget is allocated as follows:

<u>Operating Divisions</u>	<u>%</u>	<u>Expense* Categories</u>	<u>%</u>	<u>Plan for Conservation Categories</u>	<u>%</u>
Wildlife Management	27.4%	Salaries & Related Expenses	45.2%	Law Enforcement	21.6%
Law Enforcement	20.4%	Maintenance & Operations	33.2%	Land Acquisition & Improvements	17.4%
Fisheries Management	16.8%	Equipment & Vehicle Purchases	6.1%	Conservation Education	9.6%
Education & Outreach	9.0%	Improvements & Land Acquisition	15.5%	Fish & Wildlife Management	33.8%
Communications	4.0%			Nongame/End. Species/Habitat	1.5%
General Administration	3.6%			Support Services	12.9%
Support Services	18.8%			Administration	3.1%

Support Services includes Human Resources, Operational Services, Fiscal Services, and Computer Services. This Biennium Budget would be allocated in approximately the proportions listed above, except for some adjustments related to construction and operation of the proposed nature centers.

AGENCY

Arkansas Game and Fish Commission

DIRECTOR

Hugh C. Durham, IV

AGENCY PROGRAM COMMENTARY

BR21

**ARKANSAS BUDGET SYSTEM
DEPARTMENT PROGRAM SUMMARY**

AGENCY TITLE ARKANSAS GAME AND FISH COMMISSION	1999-01 Expenditures				2001-03 Biennium Request			
	Actual 1999-00	No. of Pos.	Budgeted 2000-01	No. of Pos.	Year 1 2001-02	No. of Pos.	Year 2 2002-03	No. of Pos.
SALARIES AND RELATED EXPENSES	\$22,959,357	536	\$25,167,600	556	\$29,416,800	564	\$30,345,100	564
MAINTENANCE AND OPERATIONS	13,442,943		15,525,680		17,378,300		18,154,300	
ACQUISITION / MAINTENANCE / IMPROVEMENTS	14,728,543		15,036,579		24,540,500		17,292,300	
TOTALS	\$51,130,843	536	\$55,729,859	556	\$71,335,600	564	\$65,791,700	564
Funding Sources		% of Total		% of Total		% of Total		% of Total
Fund Balances	\$15,842,965	24.5%	\$18,650,182	27.9%	\$8,202,966	14.3%	\$5,000,000	9.1%
General Revenues Special 1/8% Tax Proceeds	19,892,814	30.7%	20,782,602	31.1%	21,500,000	37.6%	22,253,000	40.6%
Special Revenues	22,181,140	34.2%	19,973,970	29.9%	19,964,000	34.9%	19,904,000	36.3%
Federal Funds	8,255,928	12.7%	8,428,000	12.6%	8,786,200	15.3%	9,159,600	16.7%
Constitutional Officers Fund	0	0.0%	0	0.0%	-	0.0%	-	0.0%
State Central Services Fund	0	0.0%	0	0.0%	-	0.0%	-	0.0%
Non-Revenue Receipts	3,608,178	5.6%	3,967,000	5.9%	3,828,000	6.7%	3,495,000	6.4%
Cash Funds	0	0.0%	0	0.0%	-	0.0%	-	0.0%
Other - Operating Reserve	(5,000,000)	-7.7%	(5,000,000)	-7.5%	(5,000,000)	-8.7%	(5,000,000)	-9.1%
Total Funding	64,781,025	100.0%	66,801,754	100.0%	57,281,166	100.0%	54,811,600	100.0%
Excess Appro./ (Funding)	(13,650,182)		(3,202,966)		14,054,434		10,980,100	
TOTAL	\$51,130,843		\$63,598,788		\$71,335,600		\$65,791,700	

DEPARTMENT

Arkansas Game and Fish Commission

DIRECTOR

Hugh C. Durham, IV

DEPARTMENT PROGRAM SUMMARY

BR22

PAGE 5

ARKANSAS BUDGET SYSTEM

	EXPENDITURES					RECOMMENDATIONS	
	99-00	00-01	00-01	01-02	02-03	LEGISLATIVE	
	ACTUAL	BUDGETED	AUTHORIZED APPROPRIATION	TOTAL REQUEST	TOTAL REQUEST	01-02	02-03
259-00 REGULAR SALARIES	16,579,485	18,310,600	18,091,925	19,623,700	20,122,600		
Number of Positions	536	556	556	564	564		
259-00 REGULAR SALARIES - GROWTH POOL	-	-	-	1,032,800	1,059,600		
259-00 REGULAR SALARIES - SPECIAL RATES OF PAY	-	-	-	200,000	400,000		
259-01 EXTRA HELP	332,696	600,000	600,000	650,000	700,000		
Number of Positions	87	140	140	155	170		
259-03 PERSONAL SERVICES MATCHING	4,845,108	5,113,880	5,352,523	5,631,500	5,769,100		
259-03 WILDLIFE OFFICER RETIREMENT MATCHING	559,508	478,320	799,834	577,000	592,000		
259-03 EMPLOYEE SECTION 125 ACCOUNTS	-	-	-	589,000	589,000		
259-16 UNIFORM ALLOWANCE	642,560	664,800	664,800	1,112,800	1,112,800	-	-
Total Salaries & Related Expenses	22,959,357	25,167,600	25,509,082	29,416,800	30,345,100	-	-
259-02 MAINTENANCE & OPERATION	8,303,549	10,519,773	10,746,500	11,571,500	12,097,600		
259-09 CONFERENCE FEES & TRAVEL	266,030	431,334	330,100	474,500	496,000		
259-10 PROFESSIONAL FEES	988,799	1,174,670	1,555,200	1,592,500	1,650,900		
259-11 CAPITAL OUTLAY	3,884,565	3,399,903	3,918,400	3,739,800	3,909,800		
259-05 ACQUISITION/MAINTENANCE/IMPROVEMENTS	14,728,543	15,036,579	16,242,800	24,540,500	17,292,300		
259-05 A/M/I - Appropriation Carried Forward		7,868,929					
TOTAL	51,130,843	63,598,788	58,302,082	71,335,600	65,791,700	-	-
Proposed Funding Sources							
Fund Balances	15,842,965	18,650,182		8,202,966	5,000,000		
General Revenues Special 1/8% Tax Proceeds	19,892,814	20,782,602		21,500,000	22,253,000		
Special Revenues	22,181,140	19,973,970		19,964,000	19,904,000		
Federal Funds	8,255,928	8,428,000		8,786,200	9,159,600		
Const. & Fiscal Agy. Fund	-	-		-	-		
State Central Services Fund	-	-		-	-		
Non-Revenue Receipts	3,608,178	3,967,000		3,828,000	3,495,000		
Cash Funds	-	-		-	-		
Other - Operating Reserve	(5,000,000)	(5,000,000)		(5,000,000)	(5,000,000)		
Total Funding	64,781,025	66,801,754		57,281,166	54,811,600		
Excess Appro./ (Funding)	(13,650,182)	(3,202,966)		14,054,434	10,980,100		
TOTAL	51,130,843	63,598,788		71,335,600	65,791,700		

DEPARTMENT 005-CONSTITUTIONAL AGENCIES
 AGENCY 080-GAME AND FISH COMMISSION
 APPROPRIATION 259-GAME AND FISH
 FUND SDG-GAME PROTECTION

APPROPRIATION SUMMARY

BR215

ITEM NO	CURR GRADE	CURR NO AUTH	CODE	CLASSIFICATION TITLE	FY 99-00 ACTUAL NO POS	FY 00-01 BUDGETED NO POS	AGENCY REQUEST			RECOMMENDATIONS									
							GRADE	FY 01-02 TOTAL NO POS	FY 02-03 TOTAL NO POS	EXECUTIVE		LEGISLATIVE		GRADE	FY 01-02 TOTAL NO POS	FY 02-03 TOTAL NO POS			
										GRADE	NO POS	GRADE	NO POS						
CURRENT POSITIONS					CURRENT POSITIONS					CURRENT POSITIONS									
1	99	2	9618	G&F ASSISTANT DIRECTOR	2(75,476)	2(77,589)													
			9618	G&F DEPUTY DIRECTOR			99	2(79,606)	2(81,675)										
		1	9950	G&F ATTORNEY	1(64,947)	1(66,765)	99	1(68,500)	1(70,281)										
		1	9951	G & F DIRECTOR	1(93,309)	1(95,921)	99	1(98,414)	1(100,972)										
2	25	9	296Z	G&F ADMINISTRATOR	9	9													
		*	296Z	G&F ADMINISTRATOR			* 26	9	9										
3	24	1	X339	ENGINEER SUPERVISOR	1	1	24	1	1										
		1	903Z	TECHNICAL ASSISTANCE MANAGER	1	1	24	1	1										
4	23	1	D046	SYSTEMS APPLICATIONS SUPERVISOR	1	1													
		*	W101N	G & F ASSOCIATE ADMINISTRATOR			*W24	1	1										
		15	299Z	G&F ASSISTANT DIVISION CHIEF	15	15													
		*	W101N	G & F ASSOCIATE ADMINISTRATOR			*W24	15	15										
5	22	1	A032	AGENCY FISCAL MANAGER	1	1	22	1	1										
		1	B016	G&F CHIEF RIVER BASINS & GOV	1	1													
		*	B016	G&F CHIEF RIVER BASINS & GOV			* 23	1	1										
		1	E051	TRAINING PROJECT MANAGER	1	1	22	1	1										

*-UPGRADE @-DOWNGRADE #-RECLASSIFICATION %-CAREER LADDER

DEPT 005 CONSTITUTIONAL AGENCIES
 AGY 080 ARKANSAS GAME AND FISH COMMISSION
 APPRO 259 GAME AND FISH COMMISSION
 FUND SDG GAME PROTECTION(080)

PERSONAL SERVICES SUMMARY
 BR255

R1674

01 02 03 04 05 06 07 08 09 10 11 12 13 14 15 16

ITEM NO	CURR GRADE	CURR NO AUTH	CODE	CLASSIFICATION TITLE	FY 99-00 ACTUAL NO POS	FY 00-01 BUDGETED NO POS	-----AGENCY REQUEST-----			-----RECOMMENDATIONS-----											
							GRADE	FY 01-02		FY 01-02		EXECUTIVE		LEGISLATIVE							
								TOTAL NO POS	FY 02-03 TOTAL NO POS	TOTAL NO POS	FY 02-03 TOTAL NO POS	GRADE	TOTAL NO POS	GRADE	TOTAL NO POS						
				CURRENT POSITIONS				CURRENT POSITIONS			CURRENT POSITIONS										
6	21	3	X338	ENGINEER, PE	3	3	22	3	3												
		2	909Z	PROGRAM SUPPORT MANAGER	2	2	22	2	2												
		1	A117	G&F LICENSING SUPERVISOR	1	1	21	1	1												
		95	B026	G&F BIOLOGIST III	93	95	21	69	69												
			**095N	G & F BIOLOGIST SUPERVISOR			**22	26	26												
		1	D010	DATA BASE ANALYST	1	1	21	1	1												
		1	D036	SR PROGRAMMER/ANALYST	1	1	21	1	1												
		5	D123	APPLICATIONS & SYSTEMS ANALYST	4	5	21	5	5												
		15	E013	G&F INFO & ED COORD	11	15	21	15	15												
		1	E031	TRAINING ACADEMY STAFF ADHR	1	1															
			**T038	WILDLIFE OFFICER SUPERVISOR			**22	1	1												
		1	N344	G&F MEDIA SPEC/VIDEOGRAPHER	1	1	21	1	1												
		1	R215	G&F PERSONNEL MANAGER	1	1															
			**101N	G & F ASSOCIATE ADMINISTRATOR			**24	1	1												
2	R298	AGENCY PROGRAM COORDINATOR	1	1																	
	#E013	G&F INFO & ED COORD			#21	1	1														

X-UPGRADE Q-DOWNGRADE #-RECLASSIFICATION Z-CAREER LADDER

DEPT 005 CONSTITUTIONAL AGENCIES
 AGY 080 ARKANSAS GAME AND FISH COMMISSION
 APPRO 259 GAME AND FISH COMMISSION
 FUND SD6 GAME PROTECTION(080)

PERSONAL SERVICES SUMMARY
 BR255

01		02		03		04		05		06		07		08		09		10		11		12		13		14		15		16	
ITEM NO	CURR GRADE	CURR NO AUTH	CODE	CLASSIFICATION TITLE	FY 99-00 ACTUAL NO POS	FY 00-01 BUDGETED NO POS	-----AGENCY REQUEST-----				-----RECOMMENDATIONS-----																				
							FY 01-02		FY 02-03		EXECUTIVE		LEGISLATIVE																		
							GRADE	NO POS	GRADE	NO POS	GRADE	NO POS	GRADE	NO POS																	
CURRENT POSITIONS										CURRENT POSITIONS																					
7	20																														
		1	R488	GRANTS ADMIN SUPV	1	1	21	1	1																						
		12	T038	WILDLIFE OFFICER SUPERVISOR	12	12																									
			* T038	WILDLIFE OFFICER SUPERVISOR			* 22	12	12																						
		2	V007	REAL ESTATE OFFICER	2	2																									
			*#103N	G & F REAL ESTATE OFFICER			*#22	2	2																						
		2	B018	G&F GAME RESEARCH BIOLOGIST	2	2																									
			*#B026	G&F BIOLOGIST III			*#21	2	2																						
		1	C020	COMMUNICATIONS SYSTEMS MANAGER	1	1	20	1	1																						
		1	E114	STAFF DEVELOPMENT COORDINATOR	1	1																									
			*#T040	WILDLIFE OFFICER III			*#21	1	1																						
		5	G120	PLANT MAINTENANCE COORDINATOR		5	20	5	5																						
		4	N320	G&F EDITOR	4	4																									
			* N320	G&F EDITOR			* 22	4	4																						
		4	R266	MANAGEMENT PROJECT ANALYST II	4	4	20	3	3																						
			*#909Z	PROGRAM SUPPORT MANAGER			*#22	1	1																						
		119	T040	WILDLIFE OFFICER III	119	119																									

*-UPGRADE @-DOWNGRADE #-RECLASSIFICATION %-CAREER LADDER

DEPT 005 CONSTITUTIONAL AGENCIES
 AGY 080 ARKANSAS GAME AND FISH COMMISSION
 APPRO 259 GAME AND FISH COMMISSION
 FUND SDG GAME PROTECTION(080)

PERSONAL SERVICES SUMMARY
 BR255

01		02		03		04		05		06		07		08		09		10		11		12		13		14		15		16	
ITEM NO	CURR GRADE	CURR NO AUTH	CODE	CLASSIFICATION TITLE	FY 99-00 ACTUAL NO POS	FY 00-01 BUDGETED NO POS	-----AGENCY REQUEST-----			-----RECOMMENDATIONS-----																					
							GRADE	FY 01-02 TOTAL NO POS	FY 02-03 TOTAL NO POS	-----EXECUTIVE-----		-----LEGISLATIVE-----																			
					CURRENT POSITIONS					CURRENT POSITIONS					CURRENT POSITIONS																
			* T040	WILDLIFE OFFICER III			* 21	119	119																						
		1	V024	G&F PURCHASING/PRINTING MANAGER	1	1																									
			* V024	G&F PURCHASING/PRINTING MANAGER			* 22	1	1																						
8	19	21	B024	BIOLOGIST II	21	21																									
			%B026	G&F BIOLOGIST III			%21	21	21																						
		1	E074	TRAINING REPRESENTATIVE	1	1																									
			%E013	G&F INFO & ED COORD			%21	1	1																						
		1	N294	MUSEUM PROGRAMS SPECIALIST		1	19	1	1																						
		1	R030	ASST PERSONNEL MANAGER	1	1	19	1	1																						
		41	T042	WILDLIFE OFFICER II	40	41																									
			%T040	WILDLIFE OFFICER III			%21	41	41																						
9	18	5	A111	ACCOUNTANT	5	5	18	5	5																						
		1	G028	BLDG PLANT MAINTENANCE SUPV II	1	1	18	1	1																						
		1	N328	INFORMATION OFFICER II		1	18	1	1																						
		1	V023	REAL PROPERTY MANAGEMENT SPECIALIST	1	1	18	1	1																						
		1	X315	CONSTRUCTION INSPECTOR	1	1	18	1	1																						

*-UPGRADE %-DOWNGRADE #-RECLASSIFICATION %-CAREER LADDER

DEPT 005 CONSTITUTIONAL AGENCIES
 AGY 080 ARKANSAS GAME AND FISH COMMISSION
 APPRO 259 GAME AND FISH COMMISSION
 FUND SDG GAME PROTECTION(080)

PERSONAL SERVICES SUMMARY
 BR255

ITEM NO	CURR GRADE	CURR NO AUTH	CODE	CLASSIFICATION TITLE	FY 99-00 ACTUAL NO POS	FY 00-01 BUDGETED NO POS	-----AGENCY REQUEST-----			-----RECOMMENDATIONS-----								
							FY 01-02 TOTAL NO POS	FY 02-03 TOTAL NO POS	-----EXECUTIVE-----		-----LEGISLATIVE-----							
									GRADE	NO POS	GRADE	NO POS	GRADE	NO POS	GRADE	NO POS		
				CURRENT POSITIONS			CURRENT POSITIONS			CURRENT POSITIONS								
10	17			1 Y005 AUTO/DIESEL MECHANIC SUPERVISOR	1	1	18	1	1									
				1 C017 TELECOMMUNICATIONS SUPERVISOR	1	1												
				*#099N G & F TELECOMMUNICATIONS MANAGER			*#20	1	1									
				1 D018 DP SUPERVISOR I	1	1	17	1	1									
				3 D061 TELEPROCESSING MONITOR	3	3	17	3	3									
				1 E019 HUNTER SAFETY EDUC & TRNG OFFICER	1	1												
				*#G028 BLDG PLANT MAINTENANCE SUPV II			*#18	1	1									
				1 E021 HUNTER SAFETY TRNG AREA CARETAKER	1	1	17	1	1									
				2 N290 COMMERCIAL ARTIST II/GRAPHIC ART II	2	2	17	2	2									
				18 R010 ADMINISTRATIVE ASSISTANT II	18	18	17	18	18									
				2 R190 PERSONNEL OFFICER II	2	2	17	1	1									
				*#R030 ASST PERSONNEL MANAGER			*#19	1	1									
				3 Y003 AUTO/DIESEL MECHANIC	3	3	17	1	1									
				*#G050 FABRICATIONS SHOP MANAGER			*#18	2	2									
				1 Y053 JOURNEYMAN CARPENTER	1	1	17	1	1									
				2 Y129 ELECTRONIC TECHNICIAN	2	2												

*-UPGRADE @-DOWNGRADE #-RECLASSIFICATION %-CAREER LADDER

DEPT 005 CONSTITUTIONAL AGENCIES
 AGY 080 ARKANSAS GAME AND FISH COMMISSION
 APPRO 259 GAME AND FISH COMMISSION
 FUND SDG GAME PROTECTION(080)

PERSONAL SERVICES SUMMARY
 BR255

RI674

ITEM NO	CURR GRADE	CURR NO AUTH	CODE	CLASSIFICATION TITLE	FY 99-00 ACTUAL NO POS	FY 00-01 BUDGETED NO POS	-----AGENCY REQUEST-----		-----RECOMMENDATIONS-----									
							FY 01-02 TOTAL NO POS	FY 02-03 TOTAL NO POS	-----EXECUTIVE-----		-----LEGISLATIVE-----							
									GRADE	NO POS	GRADE	TOTAL NO POS	GRADE	TOTAL NO POS	GRADE	TOTAL NO POS		
CURRENT POSITIONS					CURRENT POSITIONS					CURRENT POSITIONS								
15	12	1	C013	SWITCHBOARD OPERATOR SUPERVISOR	1	1												
			**098N	G & F TELECOMMUNICATIONS OPERATOR			**16	1	1									
16	10	1	H027	COOK II	1	1												
			**H049	SUPERVISOR OF COOKING			**13	1	1									
17	09	1	K065	MAIL OFFICER	1	1												
			**K181	MAILROOM SUPERVISOR			**12	1	1									
18	05	1	G175	MAINTENANCE WORKER II	1	1	05	1	1									
		557		CURRENT POSITIONS TOTALS	536	556		556	556			0	0					
				INCLUDES:														
				AGENCY REQUEST UPGRADES				146	146									
				AGENCY REQUEST DOWNGRADES				0	0									
				AGENCY REQUEST RECLASSES				3	3									
				AGENCY REQUEST UPGR/RECL				185	185									
				AGENCY REQUEST DNGR/RECL				0	0									
				AGENCY REQUEST CAREER LDR				21	21									
=====					=====					=====								
ADDITIONAL POSITIONS					ADDITIONAL POSITIONS					ADDITIONAL POSITIONS								
19	25		296Z	G&F ADMINISTRATOR														

*-UPGRADE @-DOWNGRADE #-RECLASSIFICATION %-CAREER LADDER

DEPT 005 CONSTITUTIONAL AGENCIES
 AGY 080 ARKANSAS GAME AND FISH COMMISSION
 APPRO 259 GAME AND FISH COMMISSION
 FUND SD6 GAME PROTECTION(080)

PERSONAL SERVICES SUMMARY
 BR255

01		02		03		04		05		06		07		08		09		10		11		12		13		14		15		16	
ITEM NO	CURR GRADE	CURR NO AUTH	CODE	CLASSIFICATION TITLE	FY 99-00 ACTUAL NO POS	FY 00-01 BUDGETED NO POS	-----AGENCY REQUEST-----			-----RECOMMENDATIONS-----																					
							GRADE	FY 01-02 TOTAL NO POS	FY 02-03 TOTAL NO POS	-----EXECUTIVE-----		-----LEGISLATIVE-----																			
ADDITIONAL POSITIONS					ADDITIONAL POSITIONS					ADDITIONAL POSITIONS																					
			* 296Z	G&F ADMINISTRATOR			* 26	1	1																						
20	22		E051	TRAINING PROJECT MANAGER			22	1	1																						
21	21		E013	G&F INFO & ED COORD			21	2	2																						
22	20		094N	G & F BIOLOGIST II			20	1	1																						
23	19		N294	MUSEUM PROGRAMS SPECIALIST			19	1	1																						
24	16		G027	BLDG PLANT MAINTENANCE SUPV I			16	1	1																						
25	13		K153	SECRETARY II			13	1	1																						
-----					-----					-----																					
ADDITIONAL POSITIONS TOTAL										8	8	0	0																		
=====					=====					=====																					
-----					-----					-----																					
			557	APPROPRIATION TOTAL	536	556		564	564	0	0																				
=====					=====					=====																					

*-UPGRADE @-DOWNGRADE #-RECLASSIFICATION %-CAREER LADDER

DEPT 005 CONSTITUTIONAL AGENCIES
 AGY 080 ARKANSAS GAME AND FISH COMMISSION
 APPRO 259 GAME AND FISH COMMISSION
 FUND SDG GAME PROTECTION(080)

PERSONAL SERVICES SUMMARY
 BR255

ARKANSAS BUDGET SYSTEM

OBJECT CODE	TITLE	EXPENDITURES		01 - 02 FISCAL YEAR	02 - 03 FISCAL YEAR
		99-00 ACTUAL	00-01 BUDGETED	TOTAL REQUEST	TOTAL REQUEST
	<u>02 VEHICLE MAINTENANCE & OPERATION</u>				
23600	VEHICLE REPAIRS	\$ 310,778	\$ 360,017	\$ 396,000	\$ 414,000
27200	VEHICLE INSURANCE	8,506	90,000	99,000	103,500
29800	VEHICLE LICENSE & TITLE FEES	20,968	28,560	31,400	32,800
32100	TIRES AND TUBES	174,022	178,296	196,100	205,000
32300	CREDIT CARD PURCHASES	738,362	1,021,945	1,124,100	1,175,200
	TOTAL VEHICLE MAINTENANCE & OPERATION	\$ 1,252,636	\$ 1,678,818	\$ 1,846,600	\$ 1,930,500
	<u>02 BUILDING MAINTENANCE & OPERATION</u>				
21200	TELEPHONE	\$ 369,739	\$ 472,074	\$ 519,300	\$ 542,900
23100	BUILDING & GROUNDS MAINTENANCE	349,846	365,585	402,100	420,400
24100	ELECTRICITY	282,231	370,315	407,300	425,900
24200	WATER SEWAGE AND GARBAGE	67,708	98,675	108,500	113,500
24300	GAS, BUTANE AND PROPANE	37,488	53,900	59,300	62,000
24413	RENT OF LAND, BUILDING & OFFICE SPACE	134,516	125,028	137,500	143,800
27300	INSURANCE - BUILDINGS AND CONTENTS	22,005	37,700	41,500	43,400
29410	JANITORIAL SERVICES	82,491	114,510	126,000	131,700
29420	LAUNDRY AND TOWEL SERVICE	5,167	12,500	13,800	14,400
29450	SECURITY SERVICES	32,474	37,950	41,700	43,600
34300	JANITORIAL AND HOUSEHOLD SUPPLIES	33,507	44,425	48,900	51,100
	TOTAL BUILDING MAINTENANCE & OPERATION	\$ 1,417,172	\$ 1,732,662	\$ 1,905,900	\$ 1,992,700

DEPARTMENT 005-CONSTITUTIONAL AGENCIES
 AGENCY 080-GAME AND FISH COMMISSION
 APPROPRIATION 259-GAME AND FISH
 FUND SDG-GAME PROTECTION

MAINTENANCE AND OPERATION SUMMARY

BR277

ARKANSAS BUDGET SYSTEM

OBJECT CODE	TITLE	EXPENDITURES		01 - 02 FISCAL YEAR	02 - 03 FISCAL YEAR
		99-00 ACTUAL	00-01 BUDGETED	TOTAL REQUEST	TOTAL REQUEST
	<u>02 OFFICE OPERATIONS AND SUPPLIES</u>				
21100	POSTAGE	\$ 290,272	\$ 333,230	\$ 366,600	\$ 383,200
21290	WIRELESS PHONE SERVICE	131,505	125,110	137,600	143,900
21310	PRIVATE CONVEYORS - UPS	46,998	51,275	56,400	59,000
21400	BANK CHARGE	50,370	65,000	71,500	74,800
22100	PRINTING	441,267	606,182	666,800	697,100
22200	ADVERTISING, PUBLICITY & CLIPPING SERV.	60,077	79,550	87,500	91,500
22400	FILM PROCESSING	32,901	40,235	44,300	46,300
23200	OFFICE EQUIPMENT REPAIRS	60,369	66,725	73,400	76,700
23900	DATA PROCESSING EQUIP. REPAIRS	18,031	39,940	43,900	45,900
23981	SOFTWARE MAINTENANCE AGREEMENTS	19,374	700	800	800
24510	RENT OF OFFICE MACHINES	5,336	10,550	11,600	12,100
24520	RENT OF COPIERS	46,985	53,842	59,200	61,900
24530	RENT OF POSTAGE METERS	9,010	14,125	15,500	16,200
24600	RENT OF DATA PROCESSING EQUIPMENT	-	300	300	300
24930	RENT/LEASE OF PAGERS	14,171	8,250	9,100	9,500
28100	SERVICE CENTER CHARGES	6,833	9,000	9,900	10,400
28500	TELECOMMUNICATION SERVICES	91,142	105,000	115,500	120,800
29150	EMPLOYEE TUITION/MATERIALS	75,640	205,060	225,600	235,800
29510	CONTRACT LABOR	139,721	137,735	151,500	158,400
33110	EXPENDABLE OFFICE SUPPLIES	183,377	165,148	181,700	189,900
33120	NON-EXPENDABLE OFFICE SUPPLIES	58,710	60,825	66,900	69,900
33200	EDUCATIONAL TEXTBOOKS	295,276	311,050	342,200	357,700
33310	EDUCATIONAL SUPPLIES	95,492	187,788	206,600	216,000
33340	PHOTOGRAPHIC SUPPLIES	28,194	40,595	44,700	46,700
33350	ARCHITECT & DRAFTING SUPPLIES	3,201	4,050	4,500	4,700
33700	SUBSCRIPTIONS & PUBLICATIONS	38,261	30,730	33,800	35,300
36100	DATA PROCESSING SUPPLIES	63,811	94,330	103,800	108,500
36110	DATA PROCESSING SOFTWARE	199,301	332,220	365,400	382,100
36400	DATA COMMUNICATIONS SUPPLIES	9,990	16,300	17,900	18,700
84500	PETTY CASH ESTABLISHMENT	15,150	800	900	900
96200	COMMISSION PUBLICATIONS EXPENSE	242,981	337,080	370,800	387,600
	TOTAL OFFICE OPERATIONS AND SUPPLIES	\$ 2,773,746	\$ 3,532,725	\$ 3,886,200	\$ 4,062,600

DEPARTMENT 005-CONSTITUTIONAL AGENCIES
 AGENCY 080-GAME AND FISH COMMISSION
 APPROPRIATION 259-GAME AND FISH
 FUND SDG-GAME PROTECTION

MAINTENANCE AND OPERATION SUMMARY

BR277

ARKANSAS BUDGET SYSTEM

OBJECT CODE	TITLE	EXPENDITURES		01 - 02 FISCAL YEAR	02 - 03 FISCAL YEAR
		99-00 ACTUAL	00-01 BUDGETED	TOTAL REQUEST	TOTAL REQUEST
	<u>02 TRAVEL EXPENSES</u>				
24710	RENT OF TRANSPORTATION EQUIPMENT	\$ 6,647	\$ 5,075	\$ 5,600	\$ 5,800
25111	IN-STATE MEALS AND LODGING-OFF. BUS.	165,335	301,485	331,600	346,700
25121	OUT OF STATE MEALS AND LODGING-OFF. BUS.	31,906	51,940	57,100	59,700
25211	IN STATE MILEAGE	5,674	6,400	7,000	7,400
25221	OUT OF STATE MILEAGE	-	900	1,000	1,000
25321	OUT OF STATE COMMON CARR. OFF. BUS.	40,742	39,750	43,700	45,700
25411	IN STATE - OFFICIAL BUSINESS CHARTER	6,315	20,000	22,000	23,000
25510	FIXED TRAVEL - IN STATE	4,800	4,800	5,300	5,500
25612	COMMISSIONER'S EXPENSES IN-STATE	26,256	20,050	22,100	23,100
25613	COMMISSIONER'S MILEAGE IN-STATE	3,094	5,000	5,500	5,800
25614	COMMISSIONER'S COMMON CARRIER	-	-	-	-
25622	COMMISSIONER'S EXPENSES - OUT OF STATE	2,163	2,000	2,200	2,300
25624	COMMON CARRIER	629	2,000	2,200	2,300
25710	NON-STATE EMPLOYEE EXPENSES - IN STATE	8,900	11,400	12,500	13,100
25720	NON-STATE EMPLOYEE EXPENSES - OUT OF STATE	2,228	6,300	6,900	7,200
25911	OTHER TRAVEL IN-STATE	5,951	9,000	9,900	10,400
25921	OTHER TRAVEL OUT-OF-STATE	1,264	1,950	2,100	2,200
	TOTAL TRAVEL EXPENSES	\$ 311,904	\$ 488,050	\$ 536,700	\$ 561,200

DEPARTMENT 005-CONSTITUTIONAL AGENCIES
 AGENCY 080-GAME AND FISH COMMISSION
 APPROPRIATION 259-GAME AND FISH
 FUND SDG-GAME PROTECTION

MAINTENANCE AND OPERATION SUMMARY

BR277

ARKANSAS BUDGET SYSTEM

OBJECT CODE	TITLE	EXPENDITURES		01 - 02 FISCAL YEAR	02 - 03 FISCAL YEAR
		99-00 ACTUAL	00-01 BUDGETED	TOTAL REQUEST	TOTAL REQUEST
	<u>02 OTHER MAINTENANCE & OPERATIONS</u>				
24900	OTHER RENT	\$ 47,617	\$ 76,850	\$ 84,500	\$ 88,400
27900	OTHER INSURANCE	900	900	1,000	1,000
29140	ASSOC. DUES FOR PROFESSIONAL ORGANIZATIONS	28,777	39,730	43,700	45,700
37100	PURCHASE FOR RESALE	91,710	171,565	188,700	197,300
42120	GRANTS & AIDS TO STATE AGENCIES	102,118	91,000	100,100	104,700
42140	GRANTS TO POLITICAL SUBDIVISIONS	157,144	4,000	4,400	4,600
42160	GRANTS & AID QUASI-PUBLIC ORGANIZATIONS	735,653	956,672	1,052,300	1,100,200
42190	OTHER GRANTS AND AIDS	1,129,894	1,580,913	1,739,000	1,818,000
52100	REFUNDS TO LICENSE DEALERS	215	2,500	2,800	2,900
52900	OTHER REFUNDS	6,254	20,000	22,000	23,000
54100	DRAINAGE DISTRICT TAXES	2	400	400	500
54200	SALES AND USE TAXES	90,515	58,028	63,800	66,700
54300	LICENSE & PERMITS	22,293	20,560	22,600	23,600
96600	ENFORCEMENT INVESTIGATION EXPENSES	17,700	30,550	33,600	35,100
96700	REWARD PAYMENTS	21,535	33,850	37,200	38,900
	TOTAL OTHER MAINTENANCE & OPERATIONS	\$ 2,452,327	\$ 3,087,518	\$ 3,396,100	\$ 3,550,600
	<u>02 CODING ERRORS</u>				
	Should Have Been Paid From Other Appropriations:				
24110	ELECTRICITY FOR WELLS & PUMPS	72,374			
29390	OTHER CONTRACT SERVICES - STATE AGENCIES	5,000			
73200	PICKUPS AND TRUCKS	5,557			
	Other Coding Errors (less than \$5,000)	12,833	-	-	-
	TOTAL OPERATING EXPENSES (Character 02)	\$ 8,303,549	\$ 10,519,773	\$ 11,571,500	\$ 12,097,600

DEPARTMENT 005-CONSTITUTIONAL AGENCIES
 AGENCY 080-GAME AND FISH COMMISSION
 APPROPRIATION 259-GAME AND FISH
 FUND SDG-GAME PROTECTION

MAINTENANCE AND OPERATION SUMMARY

BR277

ARKANSAS BUDGET SYSTEM

OBJECT CODE	TITLE	EXPENDITURES		01 - 02 FISCAL YEAR	02 - 03 FISCAL YEAR
		99-00 ACTUAL	00-01 BUDGETED	TOTAL REQUEST	TOTAL REQUEST
	<u>09 CONFERENCE FEES & TRAVEL EXPENSES</u>				
24720	RENT OF TRANS. EQUIP.	\$ 8,136	\$ 11,150	\$ 12,300	\$ 12,800
25113	IN-STATE MEALS & LODGING-CONFERENCES	31,036	39,775	43,800	45,700
25123	OUT OF STATE MEALS & LODGING-CONFERENCES	100,865	149,550	164,500	172,000
25213	IN-STATE MILEAGE -CONFERENCES	545	800	900	900
25223	OUT OF STATE MILEAGE-CONFERENCES	2,330	1,550	1,700	1,800
25323	OUT OF STATE COMMON CARRIER-CONFERENCES	23,699	82,650	90,900	95,000
25923	OTHER TRAVEL OUT-OF-STATE CONFERENCES	3,857	2,005	2,200	2,300
29112	IN-STATE SEMINAR FEES	37,972	52,484	57,700	60,400
29113	IN-STATE CONFERENCE FEES	13,474	12,750	14,000	14,700
29123	OUT OF STATE CONFERENCE FEES	43,994	78,620	86,500	90,400
	CODING ERRORS - Should Have Been From Other Appropriations	122	-	-	-
	TOTAL CONFERENCE FEES & TRAVEL (Character 09)	\$ 266,030	\$ 431,334	\$ 474,500	\$ 496,000
	<u>10 PROFESSIONAL FEES & SERVICES</u>				
26010	ADMINISTRATIVE FEES	\$ 747,117	\$ 906,100	\$ 1,296,700	\$ 1,342,000
26011	ADMINISTRATIVE FEES-REIMBURSABLE EXPENSES	11,500	10,050	11,100	11,600
26014	D.P.SERVICES BY NON-STATE AGENCY	-	2,000	2,200	2,300
26019	OTHER ADMINISTRATIVE FEES	109,673	36,120	39,700	41,500
26020	ENGINEERING & ARCHITECTURAL FEES	77,264	110,500	121,600	127,100
26021	ENGINEERING & ARCHITECTURAL - REIMBURSABLE EXPENSES	1,933	-	-	-
26029	OTHER ENGINEERING & ARCHITECTURAL FEES	8,586	7,500	8,300	8,600
26030	LEGAL FEES	17,915	50,000	55,000	57,500
26032	LEGAL FEES - REIMBURSABLE EXPENSES	218	4,500	5,000	5,200
26039	OTHER LEGAL FEES	318	5,600	6,200	6,400
26053	LAB & MEDICAL TESTING - NON CONTRACT	1,212	3,100	3,400	3,600
26069	OTHER MEDICAL FEES	9,499	6,700	7,400	7,700
26079	OTHER EDUCATIONAL FEES	-	500	600	600
26099	OTHER HONORARIUM	3,225	9,500	10,500	10,900
29390	OTHER CONTRACT SERVICES - STATE AGENCIES	-	22,500	24,800	25,900
	CODING ERRORS - Should Have Been From Other Appropriations	339	-	-	-
	TOTAL PROFESSIONAL FEES & SERVICES (Character 10)	\$ 988,799	\$ 1,174,670	\$ 1,592,500	\$ 1,650,900

DEPARTMENT 005-CONSTITUTIONAL AGENCIES
 AGENCY 080-GAME AND FISH COMMISSION
 APPROPRIATION 259-GAME AND FISH
 FUND SDG-GAME PROTECTION

MAINTENANCE AND OPERATION SUMMARY

BR277

ARKANSAS BUDGET SYSTEM

OBJECT CODE	TITLE	EXPENDITURES		01 - 02 FISCAL YEAR	02 - 03 FISCAL YEAR
		99-00 ACTUAL	00-01 BUDGETED	TOTAL REQUEST	TOTAL REQUEST
	<u>11 CAPITAL OUTLAY</u>				
73100	CARS, STATION WAGONS, CARRYALLS	\$ 13,687	\$ -	\$ -	\$ -
73200	PICKUPS AND TRUCKS	1,783,638	1,657,800	1,823,600	1,906,500
73400	MARINE EQUIPMENT	72,476	203,217	223,500	233,700
74100	OFFICE MACHINES	25,191	48,520	53,400	55,800
74200	OFFICE & HOUSEHOLD FURNITURE & EQUIPMENT	116,061	215,173	236,700	247,400
74300	LABORATORY EQUIPMENT	10,958	19,300	21,200	22,200
74400	CLIMATIC CONTROL EQUIPMENT	4,784	3,200	3,500	3,700
74700	PHOTOGRAPHIC EQUIPMENT	371,590	126,650	139,300	145,600
74800	MUSEUM ACQUISITIONS	8,770	9,160	10,100	10,500
75100	ENGINEERING & DRAFTING EQUIPMENT	308	18,700	20,600	21,500
75200	AGRICULTURAL, MAINTENANCE & CONSTRUCTION EQUIPMENT	868,027	399,950	439,900	459,900
75300	SHOP MACHINERY, NON-EXPENDABLE TOOLS	54,270	42,100	46,300	48,400
76200	FIREARMS & PUBLIC SAFETY EQUIPMENT	42,258	43,550	47,900	50,100
76300	COMMUNICATION EQUIPMENT	88,596	85,900	94,500	98,800
77000	DATA PROCESSING EQUIPMENT	409,050	492,933	542,200	566,900
78000	SPECIALIZED RESEARCH EQUIPMENT	13,651	33,750	37,100	38,800
	CODING ERRORS - Should Have Been From Other Appropriations	1,250	-	-	-
	TOTAL CAPITAL OUTLAY (Character 11)	\$ 3,884,565	\$ 3,399,903	\$ 3,739,800	\$ 3,909,800
	TOTAL MAINTENANCE & OPERATIONS (Characters 02,09,10,11)	\$ 13,442,943	\$ 15,525,680	\$ 17,378,300	\$ 18,154,300

DEPARTMENT 005-CONSTITUTIONAL AGENCIES
 AGENCY 080-GAME AND FISH COMMISSION
 APPROPRIATION 259-GAME AND FISH
 FUND SDG-GAME PROTECTION

MAINTENANCE AND OPERATION SUMMARY

BR277

ARKANSAS BUDGET SYSTEM

OBJECT CODE	TITLE	EXPENDITURES		01 - 02 FISCAL YEAR	02 - 03 FISCAL YEAR
		99-00 ACTUAL	00-01 BUDGETED	TOTAL REQUEST	TOTAL REQUEST
	<u>05 ACQUISITION/MAINTENANCE/IMPROVEMENTS (Continued)</u>			-	-
74700	PHOTOGRAPHIC EQUIPMENT	11,124	-	-	-
75200	AGRI. & INDUSTRIAL EQUIPMENT	3,568	-	-	-
75300	SHOP MACHINERY & TOOLS	5,623	-	-	-
76200	PUBLIC SAFETY EQUIPMENT	1,073	-	-	-
76300	COMMUNICATIONS EQUIPMENT	-	-	-	-
77000	DATA PROCESSING EQUIPMENT	94,026	-	-	-
78000	SPECIALIZED RESEARCH EQUIPMENT	4,779	-	-	-
96100	HATCHERY, LAKE AND WMA MAINTENANCE	715,824	1,053,803	1,159,200	1,211,900
96300	FISH PURCHASES	121,942	82,050	90,300	94,400
96400	FISHERIES AND WILDLIFE MANAGEMENT SUPPLIES	261,533	342,710	377,000	394,100
96500	HUNTER/BOATING EDUCATION EXPENSES	80,735	85,550	94,100	98,400
96800	LEASE OF TIMBER LAND	369,958	478,663	526,500	550,500
	CODING ERRORS - Should Have Been From Other Appropriations:			-	-
23100	Building & Grounds Maintenance	88,700	-	-	-
33110	Expendable Office Supplies	5,594	-	-	-
36110	Purchase of Software	11,028	-	-	-
52100	Refunds to License Dealers	42,315	-	-	-
	Other Coding Errors (less than \$5,000)	22,295	-	-	-
	<u>05 TOTAL ACQUISITION/MAINT./IMP. (Character 05)</u>	<u>\$ 14,728,543</u>	<u>\$ 15,036,579</u>	<u>\$ 24,540,500</u>	<u>\$ 17,292,300</u>

DEPARTMENT 005-CONSTITUTIONAL AGENCIES
 AGENCY 080-GAME AND FISH COMMISSION
 APPROPRIATION 259-GAME AND FISH
 FUND SDG-GAME PROTECTION

MAINTENANCE AND OPERATION SUMMARY

BR277

REQUEST FOR SPECIAL LANGUAGE IN APPROPRIATION ACT

<u>Game and Fish Commission</u>	<u>080</u>	<u>1073</u>
AGENCY NAME	AGENCY CODE	ACT NUMBER

Current Special Language	Agency Requests For Special Language	Executive Recommendation
<p>TRANSFER PROVISION. Any savings in the amount appropriated in Section 3 for Regular Salaries, Extra Help, or Personal Services Matching may be transferred upon request of the Director of the State Game and Fish Commission to Acquisition/Maintenance/Improvements. Upon approval of the Chief Fiscal Officer of the State, and prior review by the Arkansas Legislative Council, the Chief Fiscal Officer of the State and the Auditor of the State shall transfer said savings to Acquisition/Maintenance/Improvements and make it available for such purposes during the then current fiscal year.</p>	<p>CONTINUE CURRENT LANGUAGE</p>	

REQUEST FOR SPECIAL LANGUAGE IN APPROPRIATION ACT

Game and Fish Commission	080	1073
AGENCY NAME	AGENCY CODE	ACT NUMBER

Current Special Language	Agency Requests For Special Language	Executive Recommendation
<p>TRANSFER PROVISION. Provided, that any unexpended appropriation balance remaining on June 30, 2000 in the appropriation authorized in Section 3 hereof, for Item (01) Regular Salaries; Item (02) Extra Help; Item (03) Personal Services Matching; Item (04) Maintenance and General Operation; and Item (06) Acquisition/Maintenance/Improvements, shall be transferred by the Chief Fiscal Officer and the Auditor of State to Item (06) Acquisition/Maintenance/Improvements in Section 3 hereof, for the fiscal year beginning July 1, 2000 and ending June 30, 2001 and made available for use in said year.</p>	<p>TRANSFER PROVISION. Provided, that any unexpended appropriation balance remaining on June 30, 2000 <u>2002</u> in the appropriation authorized in Section 3 hereof, for Item (01) Regular Salaries; Item (02) Extra Help; Item (03) Personal Services Matching; Item (04) Maintenance and General Operation; and Item (06) Acquisition/Maintenance/Improvements, shall be transferred by the Chief Fiscal Officer and the Auditor of State to Item (06) Acquisition/Maintenance/Improvements in Section 3 hereof, for the fiscal year beginning July 1, 2000 <u>2002</u> and ending June 30, 2001 <u>2003</u> and made available for use in said year.</p>	

REQUEST FOR SPECIAL LANGUAGE IN APPROPRIATION ACT

Game and Fish Commission	080	1073
AGENCY NAME	AGENCY CODE	ACT NUMBER

Current Special Language	Agency Requests For Special Language	Executive Recommendation
-------------------------------------	---	-------------------------------------

PROFESSIONAL CERTIFICATIONS. The Arkansas Game and Fish Commission is hereby authorized, after prior review by the Arkansas Legislative Council, to grant a six percent (6%) increase to any regular salaried biologist possessing or acquiring professional certification from the Wildlife Society or the American Fisheries Society during the 1999-2001 biennium. This pay increase will be awarded beginning with the first bi-weekly pay period following submission of documented proof of such certification to the Commission Personnel Office, provided the biologist's most recent performance evaluation results in a satisfactory rating. Biologists not obtaining a satisfactory performance evaluation rating will be granted the pay increase on their next eligibility date, provided their new evaluation is satisfactory. New employees and probationary employees shall be eligible for this pay increase after their probationary period expires, provided the above requirements are met. Employees

PROFESSIONAL CERTIFICATIONS. The Arkansas Game and Fish Commission is hereby authorized, after prior review by the Arkansas Legislative Council, to grant a six percent (6%) increase to any regular salaried biologist possessing or acquiring professional certification from the Wildlife Society or the American Fisheries Society during the ~~1999-2001~~ 2001-2003 biennium. This pay increase will be awarded beginning with the first bi-weekly pay period following submission of documented proof of such certification to the Commission Personnel Office, provided the biologist's most recent performance evaluation results in a satisfactory rating. Biologists not obtaining a satisfactory performance evaluation rating will be granted the pay increase on their next eligibility date, provided their new evaluation is satisfactory. New employees and probationary employees shall be eligible for this pay increase after their probationary period expires, provided the above requirements are met. Employees

REQUEST FOR SPECIAL LANGUAGE IN APPROPRIATION ACT

Game and Fish Commission	080	1073
AGENCY NAME	AGENCY CODE	ACT NUMBER

Current Special Language	Agency Requests For Special Language	Executive Recommendation
<p>possessing or obtaining the pay increase authorized herein shall not be eligible for a second incentive increase upon obtaining a second professional certification from the Wildlife Society or The American Fisheries Society. Employees being compensated at the maximum of their assigned grade shall be eligible for the six percent (6%) increase in a lump sum payment, and such payment shall not be construed as exceeding the maximum salary for the grade.</p>	<p>possessing or obtaining the pay increase authorized herein shall not be eligible for a second incentive increase upon obtaining a second professional certification from the Wildlife Society or The American Fisheries Society. Employees being compensated at the maximum of their assigned grade shall be eligible for the six percent (6%) increase in a lump sum payment, and such payment shall not be construed as exceeding the maximum salary for the grade.</p>	

REQUEST FOR SPECIAL LANGUAGE IN APPROPRIATION ACT

<i>Game and Fish Commission</i>	<i>080</i>	<i>1073</i>
AGENCY NAME	AGENCY CODE	ACT NUMBER

<i>Current Special Language</i>	<i>Agency Requests For Special Language</i>	<i>Executive Recommendation</i>
<p>UNIFORM ALLOWANCE. Uniform allowance for uniformed employees. A maximum of one hundred dollars (\$100.00) per month shall be payable to each uniformed employee for the purchase and maintenance of uniforms worn full time in the official duties of the Arkansas Game and Fish Commission.</p>	<p>THIS LANGUAGE IS CODIFIED IN A.C.A 15-41-114; HOWEVER, THE FOLLOWING CHANGE IS REQUESTED:</p> <p>UNIFORM ALLOWANCE. Uniform allowance for uniformed employees. A maximum of one <u>two</u> hundred dollars (\$100.00) (<u>\$200.00</u>) per month shall be payable to each uniformed <u>fulltime certified enforcement</u> employee, and a <u>maximum of one hundred twenty-five dollars (\$125.00)</u> per month shall be payable to each uniformed <u>non-enforcement employee</u> for the purchase and maintenance of uniforms worn full time in the official duties of the Arkansas Game and Fish Commission.</p>	

REQUEST FOR SPECIAL LANGUAGE IN APPROPRIATION ACT

<u>Game and Fish Commission</u>	<u>080</u>	<u>1073</u>
AGENCY NAME	AGENCY CODE	ACT NUMBER

<i>Current Special Language</i>	<i>Agency Requests For Special Language</i>	<i>Executive Recommendation</i>
<p>ASSISTANT WILDLIFE OFFICER SUPERVISORS. Any Wildlife Officer III serving in the capacity of Assistant Wildlife Officer Supervisor shall be eligible for six percent (6%) of additional compensation within the grade during the period of time in which said employee occupies the position. Employees shall be eligible for the additional compensation of six percent (6%) of their current salary upon assuming responsibility, and this amount shall not be construed as exceeding the line item salary. The Game and Fish Commission shall certify to the Chief Fiscal Officer the assignment of duties of each employee in this position, and the location and reason for the assignment.</p>	<p>CONTINUE CURRENT LANGUAGE</p>	

REQUEST FOR SPECIAL LANGUAGE IN APPROPRIATION ACT

<u>Game and Fish Commission</u>	<u>080</u>	<u>1073</u>
AGENCY NAME	AGENCY CODE	ACT NUMBER

Current Special Language	Agency Requests For Special Language	Executive Recommendation
-------------------------------------	---	-------------------------------------

NEW SECTION: NOT TO BE INCORPORATED INTO THE ARKANSAS CODE NOR PUBLISHED SEPARATELY AS SPECIAL LOCAL AND TEMPORARY LAW. SPECIAL RATES OF PAY. The Arkansas Game & Fish Commission is authorized to administer special rates of pay for current and new employees up to the levels listed below for the following classified titles only:

Class			
Code	Title	Grade	Band
095N	G&F Biologist Supv.	22	IV
T038	Wildlife Officer Supv.	22	IV
B026	G&F Biologist III	21	IV
E013	G&F Info. & Ed. Coord.	21	IV
T040	Wildlife Officer III	21	IV
094N	G&F Biologist II	20	IV
T042	Wildlife Officer II	20	IV
093N	G&F Biologist I	19	IV
T036	Wildlife Officer I	19	IV
097N	G&F Senior Technician	17	IV
098N	G&F Telecom. Operator	16	IV

At the onset of each fiscal year, the Department of Finance and Administration's

REQUEST FOR SPECIAL LANGUAGE IN APPROPRIATION ACT

<u>Game and Fish Commission</u> AGENCY NAME	<u>080</u> AGENCY CODE	<u>1073</u> ACT NUMBER
---	----------------------------------	----------------------------------

Current Special Language	Agency Requests For Special Language	Executive Recommendation
-------------------------------------	---	-------------------------------------

NEW SECTION: NOT TO BE INCORPORATED INTO THE ARKANSAS CODE NOR PUBLISHED SEPARATELY AS SPECIAL LOCAL AND TEMPORARY LAW. ESTABLISHMENT OF A "GROWTH POOL". To address needs emerging from federal, state and local initiatives or needs affecting the role and scope of Arkansas Game and Fish Commission programs and adequate staffing levels, the Arkansas Game and Fish Commission shall establish and maintain for the 2001-2003 biennium a pool of twenty-five (25) classified positions, payable from funds generated from salary savings or other sources and appropriated herein for such purposes. These positions are to be used by the Arkansas Game and Fish Commission in the absence of regularly authorized classified positions to fulfill this need. The Arkansas Game and Fish Commission shall provide justification to the Department of Finance and Administration's Office of Personnel Management (OPM) for the need to allocate titles from this "growth pool". No classifications will be assigned to the pool until such time as specific positions are requested by the Arkansas Game and Fish Commission, recommended by OPM and reviewed by the Legislative Council.

REQUEST FOR SPECIAL LANGUAGE IN APPROPRIATION ACT

Game and Fish Commission	080	1073
AGENCY NAME	AGENCY CODE	ACT NUMBER

Current Special Language	Agency Requests For Special Language	Executive Recommendation
-------------------------------------	---	-------------------------------------

NEW SECTION: NOT TO BE INCORPORATED INTO THE ARKANSAS CODE NOR PUBLISHED SEPARATELY AS SPECIAL LOCAL AND TEMPORARY LAW.

CONTRIBUTIONS TO EMPLOYEE'S CAFETERIA PLAN ACCOUNTS. The Arkansas Game and Fish Commission is hereby authorized to make annual contributions of up to \$1,000.00 per regular salaried employee to the Commission's "cafeteria plan" as authorized by Section 125 of the Internal Revenue Service Code. Any monies contributed to the employee cafeteria plan accounts that remain unused by Commission employees at the end of each plan year shall be returned to the Game Protection Fund.

ARKANSAS BUDGET SYSTEM
 EMPLOYMENT SUMMARY
 AS REQUIRED BY ACT 358 OF 1993
 (A.C.A 19-4-307)

AGENCY TITLE 080 - ARK GAME & FISH COMM

	MALE	FEMALE	TOTAL	PERCENTAGE OF TOTAL
WHITE EMPLOYEES	<u>397</u>	<u>101</u>	<u>498</u>	<u>94%</u>
BLACK EMPLOYEES	<u>10</u>	<u>12</u>	<u>22</u>	<u>4%</u>
EMPLOYEES OF OTHER RACIAL MINORITIES	<u>7</u>	<u>0</u>	<u>7</u>	<u>1%</u>
TOTAL EMPLOYED AS OF <u>08/05/00</u> DATE			<u>29</u>	<u>6%</u>
			TOTAL MINORITIES	
			<u>527</u>	<u>100%</u>
			TOTAL EMPLOYEES	



 AGENCY DIRECTOR

* PERCENTAGE TOTALS MAY NOT ADD DUE TO ROUNDING

STATE AGENCY PUBLICATIONS

2001-2003 Biennium

Act 1276 of 1999

AGENCY: Arkansas Game & Fish Commission

AGENCY # 080

NAME OF PUBLICATION	STATUTORY AUTHORIZATION ACT # OR A.C.A.	REQUIRED FOR GOVERNOR AND/OR GENERAL ASSEMBLY ONLY	NUMBER OF COPIES PUBLISHED & DISTRIBUTED	REASON(S) FOR CONTINUED PUBLICATION AND DISTRIBUTION
Annual Report	A. C. A. 25-1-105	X	35	Statutory Requirement

ARKANSAS GAME AND FISH COMMISSION
SUMMARY OF AUDIT FINDINGS AND RECOMMENDATIONS
FOR THE YEAR ENDED JUNE 30, 1999

Assets				Liabilities			Total Equity
Cash and Investments	Fixed	Other	Total	Current	Long-Term	Total	
\$ 17,117,127	\$ 110,244,995	\$ 7,142,533	\$ 134,504,655	\$ 1,463,298	\$ 2,258,657	\$ 3,721,955	\$ 130,782,700

Revenues					Expenditures					Other Sources (Uses)
Inter-governmental	Federal	Licenses and Fees	Other	Total	Salaries and Matching	Grants and Aids	Capital	Other Operating	Total	
\$ 19,900,194	\$ 6,818,381	\$ 20,909,956	\$ 2,649,262	\$ 50,277,793	\$ 21,458,595	\$ 1,978,087	\$ 6,041,927	\$ 12,620,535	\$ 42,099,144	\$ (23,319)

Findings

None

Recommendations

None