

# STATE ATHLETIC COMMISSION

## Enabling Laws

Act 148 of 2003

Act 131 of 1927 as amended. See A.C.A. § 17-22-201

## History and Organization

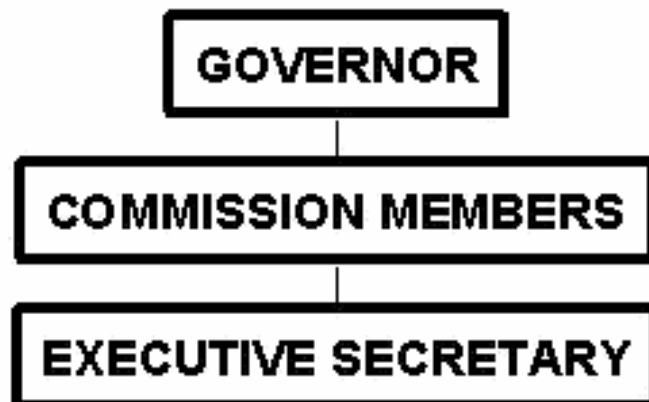
The State Athletic Commission was created in 1927 by Act 131. It has a two-fold purpose. Each goal is inextricably linked and prudent promulgation of the Rules & Regulations, as well as the statutory amendments or revisions, which should keep both goals balanced.

The first goal of the State Athletic Commission is to protect the health, safety and welfare of the participants as well as the public as they are involved in the professional sports regulated by the State Athletic Commission.

The second goal is to preserve and insure the entertainment value of the professional sports that the State Athletic Commission regulates.

In order to protect the health, safety and welfare of those described, the State Athletic Commission issues licenses to participants, officials, promoters and other affiliated personnel. In boxing, the most dangerous sport, the State Athletic Commission maintains a database shared with the Association of Boxing Commissioners in order to honor medical and administrative suspensions and revocations. Through the licensing of promoters, posting of bonds and passage of regulations supervising the events - the State Athletic Commission protects the welfare of the public.

In order to preserve and insure the entertainment value of professional boxing, kickboxing and wrestling, the State Athletic Commission creates rules and regulations that prevent fight "fixing" and the over-regulation of the sports, which could unduly remove the competitive drama for which they were designed.



## Agency Commentary

The Arkansas Athletic Commission is requesting change level increases for the 2005-07 biennium in the following line items: Extra Help, Personal Services Matching, and Operating Expenses.

The Commission is requesting an increase of \$2,668 each year in Extra Help along with necessary Personal Services Matching, due to the increased workload for the Commission. The increase is needed due to the increase in the number of boxing matches that are held each year.

The Commission is also requesting an increase of \$3,400 each year in Operating Expenses. The increase includes \$1,400 each year for Per Diem and \$2,000 each year for Mileage for the Commission Members. The Commission has a total of seven (7) members who are paid a \$50 per diem for each meeting. They attend roughly four (4) meetings a year.

The Commission has sufficient funding to cover this additional appropriation.

## Audit Findings

DIVISION OF LEGISLATIVE AUDIT  
AUDIT OF :  
ARKANSAS STATE ATHLETIC COMMISSION  
FOR THE YEAR ENDED JUNE 30, 2003

Findings	Recommendations
None	None

## Publications

### A.C.A 25-1-204

Name	Statutory Authorization	Required for		# Of Copies	Reason (s) for Continued Publication and Distribution
		Governor	General Assembly		
None	N/A	N	N	0	N/A

## **Analysis of Budget Request**

**Appropriation / Program:** 609 - Athletic Commission-Operations

**Funding Sources:** MAB - Arkansas Athletic Commission

The Arkansas Athletic Commission is funded from annual license fees of boxers, wrestlers, managers, matchmakers, promoters, referees, physicians, timekeepers, and other persons arranging, participating in, or otherwise dealing in matches and exhibitions regulated by the Commission. The Commission has authority to establish such fees in accordance with Act 1085 of 1999. Licenses are also granted to sponsors for a fee of 5% of the total gross receipts from admission charges.

Change Level Requests total \$6,274 each year of the Biennium. The increase in the Extra Help line item along with Personal Services Matching is due to the increased workload of the Commission due to an increase in the number of boxing matches held. The increase in the Operating Expenses line item is for mileage and per diem for the Commission members.

The Executive Recommendation provides for the Agency Request.

## Appropriation / Program Summary

**Appropriation / Program:** 609 Athletic Commission-Operations  
**Funding Sources:** MAB - Arkansas Athletic Commission

Commitment Item	Historical Data			Agency Request and Executive Recommendation					
	2003-2004 Actual	2004-2005 Budget	2004-2005 Authorized	2005-2006			2006-2007		
				Base Level	Agency	Executive	Base Level	Agency	Executive
Extra Help 5010001	12,270	12,332	12,332	12,332	15,000	15,000	12,332	15,000	15,000
<b>#Extra Help</b>	<b>1</b>	<b>1</b>	<b>1</b>	<b>1</b>	<b>1</b>	<b>1</b>	<b>1</b>	<b>1</b>	<b>1</b>
Personal Services Matching 5010003	939	951	951	951	1,157	1,157	951	1,157	1,157
Operating Expenses 5020002	5,293	5,895	5,895	5,895	9,295	9,295	5,895	9,295	9,295
Travel-Conference Fees 5050009	0	0	0	0	0	0	0	0	0
Professional Fees and Services 5060010	0	0	0	0	0	0	0	0	0
Data Processing 5090012	0	0	0	0	0	0	0	0	0
Grants and Aid 5100004	15,000	15,000	15,000	15,000	15,000	15,000	15,000	15,000	15,000
Capital Outlay 5120011	0	0	0	0	0	0	0	0	0
<b>Total</b>	<b>33,502</b>	<b>34,178</b>	<b>34,178</b>	<b>34,178</b>	<b>40,452</b>	<b>40,452</b>	<b>34,178</b>	<b>40,452</b>	<b>40,452</b>
<b>Funding Sources</b>									
Fund Balance 4000005	148,525	164,730		180,552	180,552	180,552	190,100	190,100	190,100
Cash Fund 4000045	49,707	50,000		43,726	50,000	50,000	43,726	50,000	50,000
<b>Total Funding</b>	<b>198,232</b>	<b>214,730</b>		<b>224,278</b>	<b>230,552</b>	<b>230,552</b>	<b>233,826</b>	<b>240,100</b>	<b>240,100</b>
Excess Appropriation/(Funding)	(164,730)	(180,552)		(190,100)	(190,100)	(190,100)	(199,648)	(199,648)	(199,648)
<b>Grand Total</b>	<b>33,502</b>	<b>34,178</b>		<b>34,178</b>	<b>40,452</b>	<b>40,452</b>	<b>34,178</b>	<b>40,452</b>	<b>40,452</b>

## Change Level by Appropriation

**Appropriation / Program:** 609-Athletic Commission-Operations  
**Funding Sources:** MAB - Arkansas Athletic Commission

### Agency Request

Change Level		2005-2006	Pos	Cumulative	% of BL	2006-2007	Pos	Cumulative	% of BL
<b>BL</b>	<b>Base Level</b>	<b>34,178</b>	<b>0</b>	<b>34,178</b>	<b>100.0</b>	<b>34,178</b>	<b>0</b>	<b>34,178</b>	<b>100.0</b>
C01	Existing Program	6,274	0	40,452	118.3	6,274	0	40,452	118.3

### Executive Recommendation

Change Level		2005-2006	Pos	Cumulative	% of BL	2006-2007	Pos	Cumulative	% of BL
<b>BL</b>	<b>Base Level</b>	<b>34,178</b>	<b>0</b>	<b>34,178</b>	<b>100.0</b>	<b>34,178</b>	<b>0</b>	<b>34,178</b>	<b>100.0</b>
C01	Existing Program	6,274	0	40,452	118.3	6,274	0	40,452	118.3

### Justification

C01 | The increases are for additional Extra Help appropriation due to increased workload, per diem, and mileage for the Commission members.