

STATE BOARD OF BARBER EXAMINERS

Enabling Laws

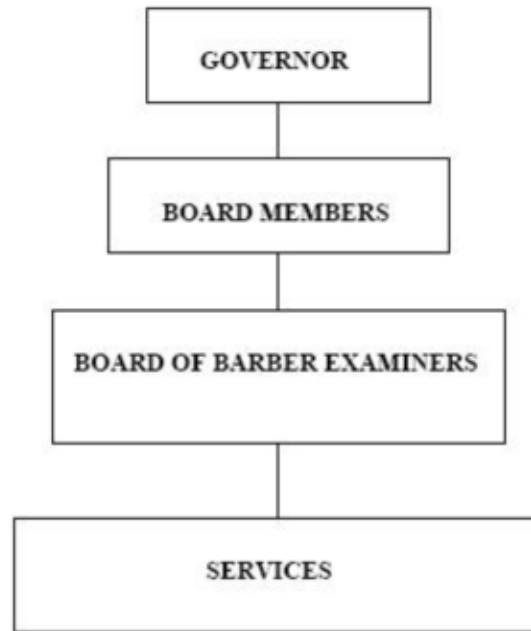
Act 132 of 2014
A.C.A. §17-20-101 et seq. (Act 313 of 1937 as amended)

History and Organization

Act 313 of 1937, as amended, established the Arkansas State Board of Barber Examiners to provide for the regulation of the barber profession. All barbers, barbershops, barber schools or colleges and students in the barber colleges in Arkansas are required to meet minimum requirements and be licensed or certified by the Board of Barber Examiners. Board membership is composed of five (5) persons appointed by the Governor for a term of six (6) years, with one term expiring each two years and the State Health Officer, who is an ex-officio member.

Fees are collected on an annual basis from all barbers, barbershops, barber colleges, barber college instructors and students enrolled in barber college. All barbershops and barber colleges in the State are inspected for sanitation and sterilization of equipment and any other violation of the barber law. Examinations for a license to practice barbering in our State are given to all barbers and barber college instructors.

The Board is a cash fund agency funded by the collection of fees.



Agency Commentary

The State Board of Barber Examiners is responsible for ensuring all persons, students, shops and schools are properly licensed and the sanitation and sterilization rules are met in accordance with the laws set forth in the Laws and Rules and Regulations for Barbering. To be in compliance with Arkansas Barber Law, Act 313 of 1937, as amended, the board conducts random inspections on each and every shop and school in the State of Arkansas; and investigates and resolves all complaints submitted to the board. This is to ensure the health and safety of the public.

The Board requests Base Level appropriation for the 2015-2017 Biennium.

Audit Findings

DIVISION OF LEGISLATIVE AUDIT
AUDIT OF :
ARKANSAS STATE BOARD OF BARBER EXAMINERS
FOR THE YEAR ENDED JUNE 30, 2012

Findings

Recommendations

None

None

State Contracts Over \$50,000 Awarded To Minority Owned Businesses Fiscal Year 2014

None

Employment Summary

	Male	Female	Total	%
White Employees	2	2	4	80 %
Black Employees	1	0	1	20 %
Other Racial Minorities	0	0	0	0 %
Total Minorities			1	20 %
Total Employees			5	100 %

Publications

A.C.A. 25-1-201 et seq.

Name	Statutory Authorization	Required for		# of Copies	Reason(s) for Continued Publication and Distribution	Unbound Black & White Copies Produced During the Last Two Years	Cost of Unbound Copies Produced During the Last Two Years
		Governor	General Assembly				
Annual Letter with Financial Report	A.C.A. 17-20-207	Y	N	2,700	Required by A.C.A. 17-20-207.	5600	468.00

Agency Position Usage Report

FY2012 - 2013						FY2013 - 2014						FY2014 - 2015					
Authorized in Act	Budgeted			Unbudgeted	% of Authorized Unused	Authorized in Act	Budgeted			Unbudgeted	% of Authorized Unused	Authorized in Act	Budgeted			Unbudgeted	% of Authorized Unused
	Filled	Unfilled	Total	Total			Filled	Unfilled	Total	Total			Filled	Unfilled	Total	Total	
3	3	0	3	0	0.00 %	4	4	0	4	0	0.00 %	4	4	0	4	0	0.00 %

Analysis of Budget Request

Appropriation: 81J - Barber Board-Treasury Cash

Funding Sources: NBE - Cash in Treasury

The State Board of Barber Examiners was created by Act 313 of 1937 to regulate the barbering profession. The Board supervises barber colleges in Arkansas to ensure they teach the proper methods of sanitation and sterilization, and perform services to the public. The Board prepares written and practical examinations and administers them to students upon completion of the course. Upon passage, students are licensed to work in a licensed barbershop.

The Board issues Student Barber, Barber Technician, Barber Shop, Barber Instructor, and Barber College licenses. Barber shops are periodically inspected, by direction of the Board, to ensure barbers are currently licensed and are using the proper methods of sanitation and sterilization. Fees are collected annually from barbers, barber shops, barber colleges, barber college instructors and students enrolled in barber college.

Base Level Regular Salaries and Personal Services Matching include the continuation of the previously authorized 2015 1% Cost of Living Adjustment and Career Service payments for eligible employees. Personal Services Matching also includes a \$10 increase in the monthly contribution for State employee's health insurance for a total State match per budgeted employee of \$420 per month. Base Level salaries and matching do not include appropriation for Merit Pay Increases. The Base Level request for Regular Salaries includes board member stipend payments.

The Board requests Base Level appropriation for the 2015-2017 Biennium.

The Executive Recommendation provides for the Agency Request. Expenditure of appropriation is contingent upon available funding.

Appropriation Summary

Appropriation: 81J - Barber Board-Treasury Cash

Funding Sources: NBE - Cash in Treasury

Historical Data

Agency Request and Executive Recommendation

Commitment Item		Historical Data			Agency Request and Executive Recommendation			Agency Request and Executive Recommendation		
		2013-2014 Actual	2014-2015 Budget	2014-2015 Authorized	2015-2016			2016-2017		
					Base Level	Agency	Executive	Base Level	Agency	Executive
Regular Salaries	5010000	133,667	157,425	168,678	158,939	158,939	158,939	158,939	158,939	158,939
#Positions		4	4	4	4	4	4	4	4	4
Extra Help	5010001	10,622	10,802	10,802	10,802	10,802	10,802	10,802	10,802	10,802
#Extra Help		1	1	1	1	1	1	1	1	1
Personal Services Matching	5010003	49,806	55,165	56,938	56,084	56,084	56,084	56,084	56,084	56,084
Operating Expenses	5020002	37,009	45,150	45,150	45,150	45,150	45,150	45,150	45,150	45,150
Conference & Travel Expenses	5050009	2,226	3,550	3,550	3,550	3,550	3,550	3,550	3,550	3,550
Professional Fees	5060010	0	500	500	500	500	500	500	500	500
Data Processing	5090012	0	0	0	0	0	0	0	0	0
Capital Outlay	5120011	0	0	0	0	0	0	0	0	0
Total		233,330	272,592	285,618	275,025	275,025	275,025	275,025	275,025	275,025
Funding Sources										
Fund Balance	4000005	226,688	204,746		142,154	142,154	142,154	81,129	81,129	81,129
Cash Fund	4000045	211,388	210,000		214,000	214,000	214,000	217,000	217,000	217,000
Total Funding		438,076	414,746		356,154	356,154	356,154	298,129	298,129	298,129
Excess Appropriation/(Funding)		(204,746)	(142,154)		(81,129)	(81,129)	(81,129)	(23,104)	(23,104)	(23,104)
Grand Total		233,330	272,592		275,025	275,025	275,025	275,025	275,025	275,025