

STATE BOARD OF EXAMINERS COUNSELING

Enabling Laws

Act 1206 of 2003
A.C.A.Code §17-27-101

History and Organization

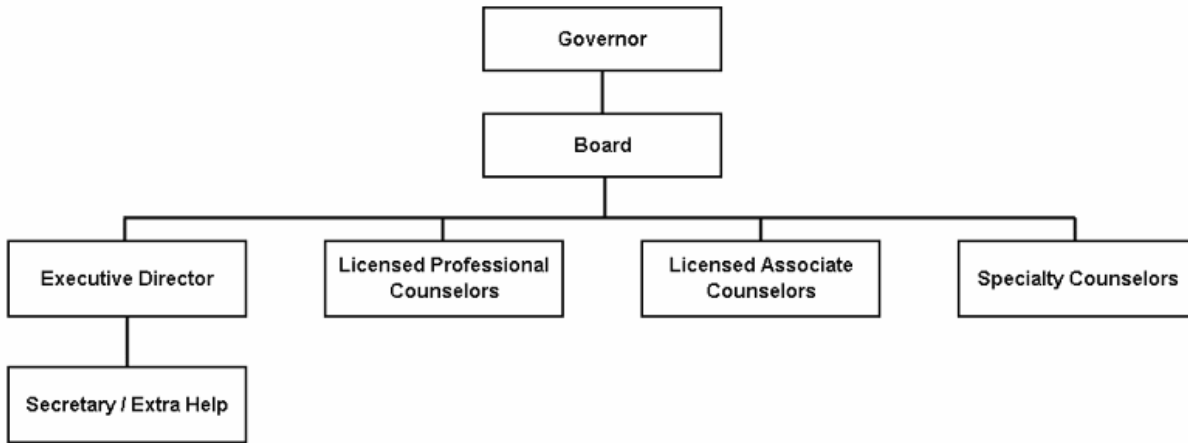
The Board of Examiners in Counseling regulates the title and practice of Counselors and Marriage and Family Therapists in the State of Arkansas. The Board examines the credentials of those who hold the license. The Board monitors and records the supervision of new license until the license holder has completed the mandated three (3) years of supervised practice. The Board conducts investigations into violations of Statutes, Rules and Regulations based on complaints, practice without license, and/or information received by the Board administrative office. If the complaints are valid and have sufficient merit, administrative hearings are held to resolve the issue, suspend or revoke the license if necessary.

The mission is to protect the public of Arkansas and to ensure quality of counseling services being provided to the citizens of Arkansas. The staff is responsible for the operation of the Board, for carrying out the policies of the Board, and making detailed reports and recommendations to the Board each month.

The General Assembly of the State of Arkansas approved Act 593 of 1979 (A.C.A.§17-27-101) in the regular session, 1979. The General Assembly approved Act 244 of 1997 to amend A.C.A.§17-27-101 through 104 and approved Act 1317 of 1997 to amend A.C.A.§17-1-103 in the regular session, 1997. The Acts provided for the regulation of the practice and the use of the titles of Counseling, Marriage and Family Therapy, and the Specialization Licenses created by the Board of Examiners in Counseling, prescribed the powers and duties of the Board, and provided for the examination and licensure of Counselors and Marriage and Family Therapists, and provided for the examination and licensure of those with specialized training in the field of Counseling and Marriage and Family Therapy.

The Board of Examiners in Counseling, composed of seven members, was appointed by the Governor sixty days after July 1, 1997, in the manner and for the terms of office provided in Act 593 of 1979. A Retired Citizen Board member was appointed in the fall of 1984 and a Marriage and Family Therapist was appointed in the fall of 1997 bringing the Board membership to a total of nine (9) members. The Board meets each month.

Disciplinary hearings held before the Board is pursuant to the Arkansas Administrative Procedures Act and are arranged with the counsel of the Arkansas Attorney General's Office.



Agency Commentary

The Board of Examiners in Counseling is requesting Base Level for the 2005-2007 biennium. The Board of Examiners in Counseling operates to protect the citizens of Arkansas at a cost only level and does not expect to have any fee increases.

Audit Findings

DIVISION OF LEGISLATIVE AUDIT
 AUDIT OF :
 ARKANSAS STATE BOARD OF EXAMINERS IN COUNSELING
 FOR THE YEAR ENDED JUNE 30, 2003

Findings	Recommendations
None	None

Employment Summary

	Male	Female	Total	%
White Employees	0	3	3	100 %
Black Employees	0	0	0	0 %
Other Racial Minorities	0	0	0	0 %
Total Minorities			0	0 %
Total Employees			3	100 %

Publications

A.C.A 25-1-204

Name	Statutory Authorization	Required for		# Of Copies	Reason (s) for Continued Publication and Distribution
		Governor	General Assembly		
Minutes	A.C.A. §17-27-201	N	N	16	Distribution to Board
Mission Statement	A.C.A. §17-27-201	N	N	4	Statutory for Public Use
Publication	A.C.A. §17-27-201	N	N	1	Members & Legislative Council Library

Analysis of Budget Request

Appropriation / Program: 1GE - Counseling - Cash in Treasury

Funding Sources: NEC - Cash in Treasury

The Board of Examiners in Counseling is established under Arkansas Code Annotated §17-27-201 and consists of eight (8) members appointed by the Governor. The Board is authorized to adopt rules, regulations and procedures to carry out the duties authorized; is required to adopt the Code of Ethics of the American Counseling Association and any revisions or additions deemed appropriate by the Board to govern appropriate practice or behavior relative to counseling services; is required to adopt the Code of Ethics of the American Association of Marriage and Family Therapy to govern licensed marriage and family therapists and licensed associate marriage and family therapists; and is required to charge an application fee determined by the Board. Additionally, the Board is authorized to accept grants from foundations and institutions to carry out its functions and hire assistants as are necessary to perform its activities. The Board has purview over Professional Counselors, Associate Counselors, Marriage and Family Therapists, Associate Marriage and Family Therapists. A.C.A. §17-27-313 requires that each first-time applicant for a license issued by the Arkansas Board of Examiners in Counseling apply to the Identification Bureau of the Department of Arkansas State Police for a state and national criminal background check to be conducted by the Federal Bureau of Investigation. This appropriation authorizes expenditures for all operations of the Board to include the administration of examinations and licensure. The Board processes its operations and payroll through the State Treasury. Fees are collected from initial licensure and biannual renewal of licenses.

Base Level for this appropriation includes graduated salary increases of 3% to 1.5% each year over FY05 salary levels, along with related Personal Services Matching costs for three (3) Base Level positions. This includes a \$600 minimum increase for employees earning \$20,000 or below. Included in Personal Services Matching is a \$40 increase in the monthly contribution for State employee's health insurance for a total State match of \$320 per month.

Base Level totals are \$191,929 in FY06 and \$194,352 in FY07.

The Agency requests Base Level for the 2005-2007 biennium.

The Executive Recommendation provides for the Agency Request.

Appropriation / Program Summary

Appropriation / Program: 1GE Counseling - Cash in Treasury
Funding Sources: NEC - Cash in Treasury

Commitment Item	Historical Data			Agency Request and Executive Recommendation					
	2003-2004 Actual	2004-2005 Budget	2004-2005 Authorized	2005-2006			2006-2007		
				Base Level	Agency	Executive	Base Level	Agency	Executive
Regular Salaries 5010000	59,426	64,965	64,917	66,912	66,912	66,912	68,919	68,919	68,919
#Positions	3	3	3	3	3	3	3	3	3
Extra Help 5010001	3,037	19,000	19,000	19,000	19,000	19,000	19,000	19,000	19,000
#Extra Help	2	1	2	2	2	2	2	2	2
Personal Services Matching 5010003	20,119	25,445	23,042	27,257	27,257	27,257	27,673	27,673	27,673
Operating Expenses 5020002	59,546	62,760	62,760	62,760	62,760	62,760	62,760	62,760	62,760
Travel-Conference Fees 5050009	0	0	0	0	0	0	0	0	0
Professional Fees and Services 5060010	6,859	10,000	10,000	10,000	10,000	10,000	10,000	10,000	10,000
Data Processing 5090012	0	5,000	5,000	5,000	5,000	5,000	5,000	5,000	5,000
Capital Outlay 5120011	0	0	0	0	0	0	0	0	0
Testing Fees 5900046	0	1,000	1,000	1,000	1,000	1,000	1,000	1,000	1,000
Total	148,987	188,170	185,719	191,929	191,929	191,929	194,352	194,352	194,352
Funding Sources									
Fund Balance 4000005	153,194	168,744		183,524	183,524	183,524	194,545	194,545	194,545
Cash Fund 4000045	164,537	202,950		202,950	202,950	202,950	202,950	202,950	202,950
Total Funding	317,731	371,694		386,474	386,474	386,474	397,495	397,495	397,495
Excess Appropriation/(Funding)	(168,744)	(183,524)		(194,545)	(194,545)	(194,545)	(203,143)	(203,143)	(203,143)
Grand Total	148,987	188,170		191,929	191,929	191,929	194,352	194,352	194,352

The FY05 Budgeted amount in Regular Salaries and Personal Services Matching exceeds the authorized amount due to salary and matching rate adjustments during the 2003-05 biennium.