

STATE BOARD OF REGISTRATION FOR PROF GEOLOGIST

Enabling Laws

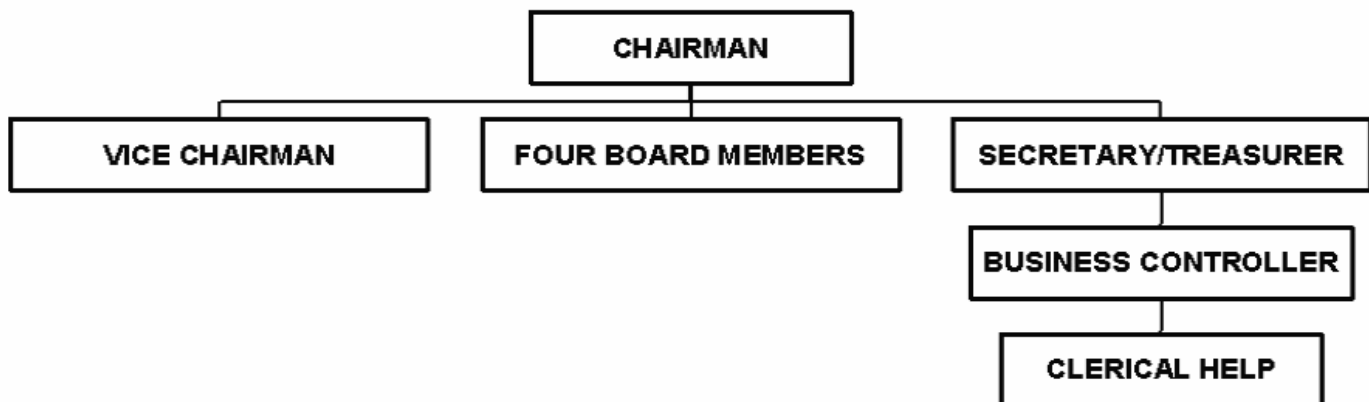
Act 1195 of 2003
Act 701 of 1987 as amended
A.C.A. § 17-32-307

History and Organization

Act 701 of 1987 established the Board of Registration for Professional Geologists. The purpose of the Board is to oversee the practice of geology in the State of Arkansas in the public sector. The primary mission is to regulate such practice by registration and certification of qualified geologists and promulgate and enforce the regulations that provide the standards for practicing geology in Arkansas, in order to protect the public.

In 1988, the Board of Registration for Professional Geologists, along with several other states, founded the National Association of State Boards of Geology.

The Board of Registration for Professional Geologists consists of seven members appointed by the Governor or set by the Act. Five members are registered geologists representing academia, government, a company, an independent or consultant, and a geologist-at-large. One member is appointed for the public-at-large and the Director of the Arkansas Geological Commission is a permanent ex-officio member. The Board employs one Business Controller.



Agency Commentary

The Board of Registration for Professional Geologists has recognized 1,869 registered geologists, 939 having a current status. There are 3 geologists-in-training, and currently 2 applications for registration on file. The Board is authorized to collect up to \$60.00 per year, per registrant in renewal fees; however, the current annual renewal fee is set at \$50.00. Other fees collected include \$20 application fee, \$60.00 initial registration fee, and \$20 renewal fee for geologists-in-training. In

addition, penalty fees at the rate of 50% are charged to those renewals paid during a six-month penalty period. Reinstatement fees are double the annual renewal fee and require Board approval.

The Board is located at the Geological Commission office in Little Rock, which provides office space and equipment. The revenue from registration and other fees supports salaries, supplies, postage, telephone service and participation in the National Association of State Boards of Geology (ASBOG) which provides the examination required for registration.

Adjustments in operating expenses as well as an additional \$1,500 each year of the biennium is needed to cover general cost increases in operating expenses and travel to continue the Agency's current level of operations.

Revenues are sufficient to cover the Board's biennial request.

Audit Findings

DIVISION OF LEGISLATIVE AUDIT
AUDIT OF :
STATE BOARD OF REGISTRATION FOR PROFESSIONAL GEOLOGISTS
FOR THE YEAR ENDED JUNE 30, 2002

Findings	Recommendations
The Arkansas Administration Statewide Information System (AASIS) fails to provide adequate controls to ensure the reliability of financial data, and therefore, does not adequately safeguard the financial assets of the Agency. Specifically, the security configuration does not provide adequate segregation of duties in an environment with a limited number of personnel, resulting in an excessive number of conflicts regarding the restricted access to financial data and data entry.	The Agency work with the AASIS staff to train additional personnel in order to resolve job conflicts and maximize the segregation of duties.

Employment Summary

	Male	Female	Total	%
White Employees	0	1	1	100 %
Black Employees	0	0	0	0 %
Other Racial Minorities	0	0	0	0 %
Total Minorities			0	0 %
Total Employees			1	100 %

Publications

A.C.A 25-1-204

Name	Statutory Authorization	Required for		# Of Copies	Reason (s) for Continued Publication and Distribution
		Governor	General Assembly		
Directory of Professional Geologists and GIT's Registered in Arkansas	A.C.A. 17-32-207	N	N	310	Public Record Publication and distribution is mandated by law.

Analysis of Budget Request

Appropriation / Program: 851 - Geologist-Cash in Treasury

Funding Sources: NEG-Cash in Treasury

The Board of Registration for Professional Geologists was created by Act 701 of 1987. The primary duty of the Board is to regulate the practice of geology in the State of Arkansas in the public sector. The Board is a cash agency funded from the receipt of fees charged pursuant to Arkansas Code Annotated §17-32-307.

Base Level for this appropriation includes graduated salary increases of 3% to 1.5% each year over FY05 salary levels, along with related Personal Services Matching costs for one (1) Base Level position. Included in Personal Services Matching is a \$40 increase in the monthly contribution for State employee's health insurance for a total State match of \$320 per month.

The Board is requesting adjustments in various Operating Expenses as well as increases of \$1,300 each year to cover postage, printing, mileage, meals and lodging, parking fees, and data processing supplies. The Board is also requesting an increase in Travel of \$200 each year.

The Executive Recommendation provides for the Agency Request.

Appropriation / Program Summary

Appropriation / Program: 851 Geologist-Cash in Treasury
Funding Sources: NEG-Cash in Treasury

Commitment Item	Historical Data			Agency Request and Executive Recommendation					
	2003-2004 Actual	2004-2005 Budget	2004-2005 Authorized	2005-2006			2006-2007		
				Base Level	Agency	Executive	Base Level	Agency	Executive
Regular Salaries 5010000	24,929	25,773	25,773	26,546	26,546	26,546	27,342	27,342	27,342
#Positions	1	1	1	1	1	1	1	1	1
Extra Help 5010001	0	3,000	3,000	3,000	3,000	3,000	3,000	3,000	3,000
#Extra Help	0	1	1	1	1	1	1	1	1
Personal Services Matching 5010003	7,759	8,420	7,686	9,063	9,063	9,063	9,212	9,212	9,212
Operating Expenses 5020002	8,976	12,400	9,000	9,000	10,300	10,300	9,000	10,300	10,300
Travel-Conference Fees 5050009	1,126	1,500	1,500	1,500	1,700	1,700	1,500	1,700	1,700
Professional Fees and Services 5060010	0	0	0	0	0	0	0	0	0
Data Processing 5090012	0	0	0	0	0	0	0	0	0
Capital Outlay 5120011	0	0	0	0	0	0	0	0	0
Total	42,790	51,093	46,959	49,109	50,609	50,609	50,054	51,554	51,554
Funding Sources									
Fund Balance 4000005	156,420	161,698		150,605	150,605	150,605	139,996	139,996	139,996
Cash Fund 4000045	48,068	40,000		38,500	40,000	40,000	38,500	40,000	40,000
Total Funding	204,488	201,698		189,105	190,605	190,605	178,496	179,996	179,996
Excess Appropriation/(Funding)	(161,698)	(150,605)		(139,996)	(139,996)	(139,996)	(128,442)	(128,442)	(128,442)
Grand Total	42,790	51,093		49,109	50,609	50,609	50,054	51,554	51,554

The FY05 Budgeted amount in Personal Services Matching exceeds the authorized amount due to matching rate adjustments during the 2003-05 biennium.

Budget exceeds Authorized Appropriation in Operating Expenses due to a transfer from the Cash Fund Holding Account.

Change Level by Appropriation

Appropriation / Program: 851-Geologist-Cash in Treasury
Funding Sources: NEG-Cash in Treasury

Agency Request

Change Level		2005-2006	Pos	Cumulative	% of BL	2006-2007	Pos	Cumulative	% of BL
BL	Base Level	49,109	1	49,109	100.0	50,054	1	50,054	100.0
C01	Existing Program	1,875	0	50,984	103.8	1,875	0	51,929	103.7
C03	Discontinue Program	(375)	0	50,609	103.0	(375)	0	51,554	103.0

Executive Recommendation

Change Level		2005-2006	Pos	Cumulative	% of BL	2006-2007	Pos	Cumulative	% of BL
BL	Base Level	49,109	1	49,109	100.0	50,054	1	50,054	100.0
C01	Existing Program	1,875	0	50,984	103.8	1,875	0	51,929	103.7
C03	Discontinue Program	(375)	0	50,609	103.0	(375)	0	51,554	103.0

Justification

C01	The increases are for postage, printing, mileage, meals and lodging, parking, conferences, and data processing supplies.
C03	The decreases are for several Operating Expenses line items.