

AR STATE BOARD OF LANDSCAPE ARCHITECTS

Enabling Laws

Act 11 of 2003

Act 353 of 1975, as amended. See A.C.A. 71-2902

History and Organization

The Arkansas State Board of Landscape Architects (formerly Arkansas Advisory Committee for Registration of Landscape Architects) is responsible for the examination and registration/licensure of landscape architects in Arkansas, in accordance with Act 353 of 1975, as amended. The Board is composed of four landscape architects, one public member and the Program Director of the University of Arkansas School of Landscape Architecture.

Mission

The Landscape Board was formed in 1975 with the goal of protecting the public's health, safety and welfare as it relates to the practice of Landscape Architecture.

Statutory Responsibility

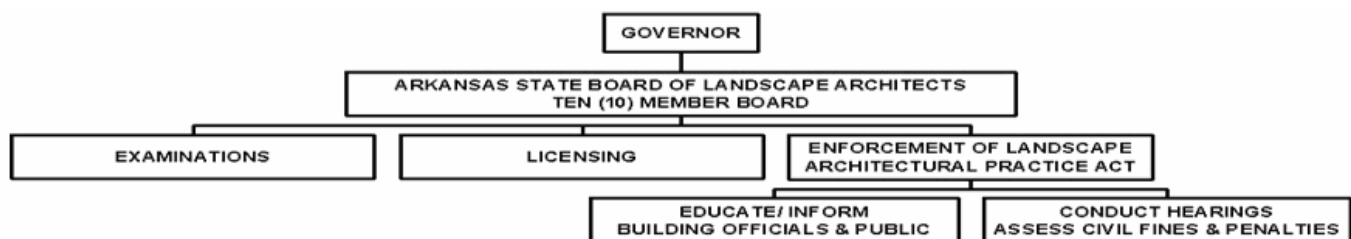
To certify, license and register individuals who met the requirements to practice landscape architecture in the State of Arkansas and to protect the public from illegal, incompetent, unethical and unprofessional practitioners.

Primary Activities

The Arkansas State Board of Architects provides the staff support for carrying out the duties of the Arkansas State Board of Landscape Architects. Those duties include:

- To administer and grant certification to those who pass the Landscape Architectural Registration Examination (L.A.R.E.) and otherwise qualify;
- Determine whether those who apply for a reciprocal qualify;
- Annually register/license all individual landscape architects and issue annual licenses to practice;
- Investigate violations of the Landscape Architectural Practice Act and take disciplinary action where appropriate after conducting a hearing; and
- Monitor mandatory continuing education requirements.

No Oversight and/or Advisory Affiliation



Agency Commentary

The Arkansas State Board of Landscape Architects certify, license and register individuals who meet requirements to practice landscape architecture and protect the public from illegal, incompetent, unethical and unprofessional practioners. The operations of the Board are funded from the receipts of fees charged by the Agency, which include registration and renewal fees, fines and penalties. Base Level operations in the amount of \$33,240 each year reflect the 2005-07 budget request.

The Landscape Board funds one half the salary for one position of the Arkansas State Board of Architects.

Audit Findings

DIVISION OF LEGISLATIVE AUDIT
AUDIT OF :
ADVISORY COMMITTEE FOR REGISTRATION OF LANDSCAPE ARCHITECTS
FOR THE YEAR ENDED JUNE 30, 2003

Findings	Recommendations
None	None

Cash Fund Balance Description as of June 30, 2004

Fund Account	Balance	Type	Location
3300000	\$106,065	Checking	Regions Bamk

Statutory/Other Restrictions on use:

A.C.A. §17-36-206(b)(1)

Statutory Provisions for Fees, Fines, Penalties:

A.C.A. §17-36-206(b)(1)

Revenue Receipts Cycle:

Fees, fines and penalties are collected throughout the year.

Fund Balance Utilization:

The fees are used to carry out the functions of the Board.

Publications

A.C.A 25-1-204

Name	Statutory Authorization	Required for		# Of Copies	Reason (s) for Continued Publication and Distribution
		Governor	General Assembly		
None	N/A	N	N	0	N/A

Analysis of Budget Request

Appropriation / Program: A34 - Cash Operations

Funding Sources: 330 - Landscape Architects - Cash

The Arkansas State Board of Landscape Architects is responsible for the examination and registration of landscape architects in Arkansas. The operations of the Board are funded with cash funds generated from the receipt of fees charged by the agency.

The Board is requesting Base Level for the 2005-07 biennium.

The Executive Recommendation provides for the Agency Request.

Appropriation / Program Summary

Appropriation / Program: A34 Cash Operations
Funding Sources: 330 - Landscape Architects - Cash

Historical Data				Agency Request and Executive Recommendation					
Commitment Item	2003-2004	2004-2005	2004-2005	2005-2006			2006-2007		
	Actual	Budget	Authorized	Base Level	Agency	Executive	Base Level	Agency	Executive
Operating Expenses 5020002	7,952	14,490	14,490	14,490	14,490	14,490	14,490	14,490	14,490
Travel-Conference Fees 5050009	0	0	0	0	0	0	0	0	0
Professional Fees and Services 5060010	0	0	0	0	0	0	0	0	0
Data Processing 5090012	0	0	0	0	0	0	0	0	0
Capital Outlay 5120011	0	3,481	3,481	0	0	0	0	0	0
Exams 5900046	3,714	7,348	7,348	7,348	7,348	7,348	7,348	7,348	7,348
Reimburse Board of Architects 5900047	11,402	11,402	11,402	11,402	11,402	11,402	11,402	11,402	11,402
Total	23,068	36,721	36,721	33,240	33,240	33,240	33,240	33,240	33,240
Funding Sources									
Fund Balance 4000005	91,900	106,065		106,844	106,844	106,844	111,104	111,104	111,104
Cash Fund 4000045	37,233	37,500		37,500	37,500	37,500	37,500	37,500	37,500
Total Funding	129,133	143,565		144,344	144,344	144,344	148,604	148,604	148,604
Excess Appropriation/(Funding)	(106,065)	(106,844)		(111,104)	(111,104)	(111,104)	(115,364)	(115,364)	(115,364)
Grand Total	23,068	36,721		33,240	33,240	33,240	33,240	33,240	33,240