

STATE BOARD OF DENTAL EXAMINERS

Enabling Laws

Act 354 of 2003
A.C.A. §17-82-201

History and Organization

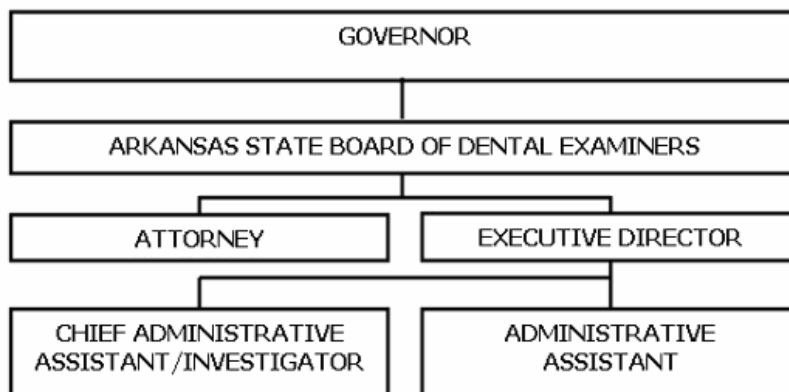
The Arkansas State Board of Dental Examiners was created by Act 144 of 1887 and has been in continuous existence for 115 years. Act 14 of 1995, known as the Dental Practice Act, governs Board operations. The Board regulates the practice of dentistry, dental hygiene, and dental assisting, by examining applicants for competency and issuing licenses to candidates meeting the requirements of the State and the Board.

The Board is also vested with the power to revoke or suspend the privilege of practicing professionally under any license or permit issued by it; it may place a licensee or permittee on probation, may impose a fine, or a combination of these sanctions; it has the authority to promulgate Rules and Regulations governing the practice of dentistry; it may conduct disciplinary hearings under the administrative Procedures Act.

The Board is composed of six practicing dentists, one practicing dental hygienist, and two consumer representatives; one represents the senior citizens of the State. Members are appointed by the Governor for five year terms; officers are elected annually. The Board meets seven or more times a year and conducts disciplinary hearings in conjunction with those meetings.

The Board employs an executive director and two other employees. The Board participates in the Southern Regional Testing Agency with five other states; this agency administers clinical examinations to dentists and dental hygienists. The Board members who are dentists and the dental hygienist Board member participate with other professional examiners at sixteen examinations each year. The Board also holds individual examinations for applicants in the dental specialty fields.

More than 4,800 individuals hold a current license or permit issued by the Board of Dental Examiners.



Agency Commentary

The State Board of Dental Examiners is a medically related Cash Fund agency with one appropriation. Funds are collected by the Board through application fees for licensure, renewal of licenses and permits, issuance of permits, late penalties, and disciplinary fines. The Board is totally self-funded.

The Board was established in 1887 to regulate dentistry. Through the Dental Practice Act [A.C.A. §17-82-101 et seq.] and its Rules and Regulations, the Board prescribes those acts, services, procedures and practices which define the practice of dentistry and those acts, services, procedures and practices which can be performed by dental hygienists and dental assistants.

The Board's office staff of three receives written complaints from the public about dental services, answers questions from the public and licensees of the Board, dispenses applications and information about licensure and permitting in the State, and plans and schedules hearings and meetings. The Board implemented minimum standards of continuing education and mandatory CPR several years ago. The Board uses its website [www.asbde.org] to provide application forms for licensure, minutes of meetings, newsletters and lists of licensed dentists and dental hygienists. Our website is linked to the national group of dental examiners.

The Board is requesting Base Level for the 2005-2007 biennium.

Audit Findings

DIVISION OF LEGISLATIVE AUDIT
AUDIT OF :
ARKANSAS STATE BOARD OF DENTAL EXAMINERS
FOR THE YEAR ENDED JUNE 30, 2003

Findings	Recommendations
None	None

Employment Summary

	Male	Female	Total	%
White Employees	0	1	1	50 %
Black Employees	0	1	1	50 %
Other Racial Minorities	0	0	0	0 %
Total Minorities			1	50%
Total Employees			2	100 %

Cash Fund Balance Description as of June 30, 2004

Fund Account	Balance	Type	Location
3120000	\$734,321	Checking, MM, CD, Treasury	Metropolitan National, Pinnacle Bank, State Treasury, Simmons

Statutory/Other Restrictions on use:

A.C.A. 17-82-209, A.C.A. 17-82-211, A.C.A. 26-16-905

Statutory Provisions for Fees, Fines, Penalties:

A.C.A. 17-82-103, A.C.A. 17-82-104, A.C.A. 4-29-408

Revenue Receipts Cycle:

Jan 1 Odd numbered years – Biennial renewal of dental and hygiene licenses, corporation registry, anesthesia permits. Jan 1 Even numbered years – Biennial renewal of dental assistant permits.

Fund Balance Utilization:

To pay all expenses of Board operations including Board meetings, disciplinary hearings, complaint investigations, staff training, Board member examiners training, and office operations.

Publications

A.C.A 25-1-204

Name	Statutory Authorization	Required for		# Of Copies	Reason (s) for Continued Publication and Distribution
		Governor	General Assembly		
None	N/A	N	N	0	N/A

Analysis of Budget Request

Appropriation / Program: A41 - Cash Operations

Funding Sources: 312-Dental Examiners-Cash

The State Board of Dental Examiners is funded from the receipt of fees charged by the Agency, as authorized by Arkansas Code § 17-82-310.

Base Level for this appropriation includes graduated salary increases of 3% to 1.5% each year over FY05 salary levels, along with related Personal Services Matching costs for five (5) Base Level positions. This includes a \$600 minimum increase for employees earning \$20,000 or below. Included in Personal Services Matching is a \$40 increase in the monthly contribution for State employee's health insurance for a total State match of \$320 per month.

The Agency is requesting Base Level of \$414,640 for FY06 & \$421,358 for FY07.

The Executive Recommendation provides for the Agency Request. Expenditure of appropriation is contingent upon available funding.

Appropriation / Program Summary

Appropriation / Program: A41 Cash Operations
Funding Sources: 312-Dental Examiners-Cash

Commitment Item	Historical Data			Agency Request and Executive Recommendation					
	2003-2004 Actual	2004-2005 Budget	2004-2005 Authorized	2005-2006			2006-2007		
				Base Level	Agency	Executive	Base Level	Agency	Executive
Regular Salaries 5010000	127,877	185,556	185,665	191,023	191,023	191,023	196,633	196,633	196,633
#Positions	4	5	5	5	5	5	5	5	5
Personal Services Matching 5010003	38,868	53,389	49,681	56,888	56,888	56,888	57,996	57,996	57,996
Operating Expenses 5020002	100,002	114,637	114,637	114,637	114,637	114,637	114,637	114,637	114,637
Travel-Conference Fees 5050009	2,594	7,166	7,166	7,166	7,166	7,166	7,166	7,166	7,166
Professional Fees and Services 5060010	36,199	42,126	42,126	42,126	42,126	42,126	42,126	42,126	42,126
Data Processing 5090012	0	0	0	0	0	0	0	0	0
Refund/Reimbursements 5110014	2,597	2,800	2,800	2,800	2,800	2,800	2,800	2,800	2,800
Capital Outlay 5120011	0	0	0	0	0	0	0	0	0
Total	308,137	405,674	402,075	414,640	414,640	414,640	421,358	421,358	421,358
Funding Sources									
Fund Balance 4000005	469,564	734,705		429,031	429,031	429,031	579,391	579,391	579,391
Cash Fund 4000045	573,278	100,000		565,000	565,000	565,000	100,000	100,000	100,000
Total Funding	1,042,842	834,705		994,031	994,031	994,031	679,391	679,391	679,391
Excess Appropriation/(Funding)	(734,705)	(429,031)		(579,391)	(579,391)	(579,391)	(258,033)	(258,033)	(258,033)
Grand Total	308,137	405,674		414,640	414,640	414,640	421,358	421,358	421,358

The FY05 Budgeted amount in Personal Service Matching exceeds Authorized amount due to salary adjustments during the 2003-2005 biennium.
 Renewal fees from licensees are collected on a biennial basis.