

AR DIETETICS LICENSING BOARD

Enabling Laws

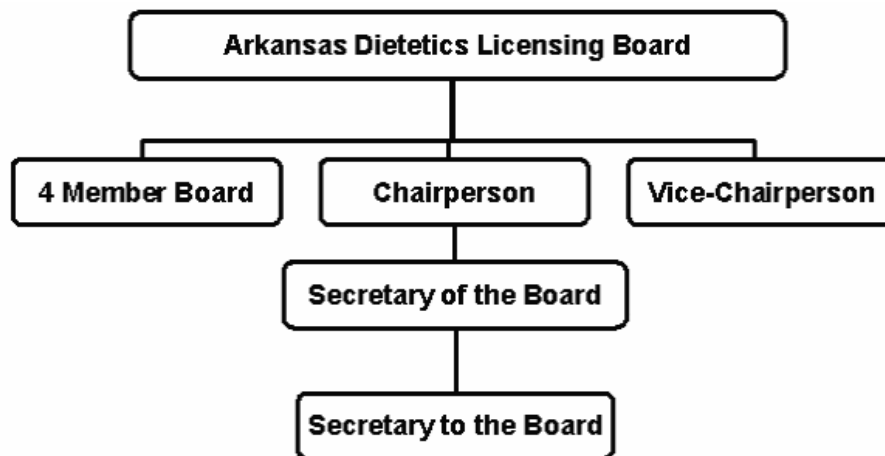
Act 49 of 2003
Act 392 of 1989
Act 141 of 1991

History and Organization

The Mission of the Arkansas Dietetics Licensing Board is to protect and serve the citizens of Arkansas by providing licensing and regulation of individuals qualified to engage in the practice of dietetics. Healthy Arkansans are an investment in our future.

The Arkansas Dietetics Licensing Board was established by Act 392 of 1989, and subsequently amended by Act 141 of 1991. This Act provided for the definition, examination, and licensing of dietitians. It also defined the duties and powers of the Board.

The Board is comprised of seven (7) members, all of whom are Arkansas residents, four (4) of which are Licensed Dietitians, and three (3) who are representatives of the public at large. The members of the Board are appointed by the Governor, with the consent of the Senate, and serve staggered terms of five (5) years each beginning January 15 of odd-numbered years. The Board is comprised of a Chairperson, Vice-Chairperson, and Secretary. The Board's staff is comprised of a Secretary, who administers the office under the direction of the Secretary of the Board.



Agency Commentary

The Arkansas Dietetics Licensing Board's budget consists of one (1) regular salary position, personal services matching and operating expenses. The budgeted amounts have been satisfactory for operations. The Board has no change level requests for the 2005-2007 biennium and request Base Level.

Audit Findings

DIVISION OF LEGISLATIVE AUDIT
AUDIT OF :
ARKANSAS DIETETICS LICENSING BOARD
FOR THE YEAR ENDED JUNE 30, 2003

Findings	Recommendations
None	None

Employment Summary

	Male	Female	Total	%
White Employees	0	1	1	100 %
Black Employees	0	0	0	0 %
Other Racial Minorities	0	0	0	0 %
Total Minorities			0	0 %
Total Employees			1	100 %

Cash Fund Balance Description as of June 30, 2004

Fund Account	Balance	Type	Location
3700000	\$110,730	Checking	Bank of America

Statutory/Other Restrictions on use:

Act 392 of 1989

Statutory Provisions for Fees, Fines, Penalties:

Act 392 of 1989

Revenue Receipts Cycle:

Fees, fines, and penalties are collected throughout the year.

Fund Balance Utilization:

Annual license with additional fees and penalties, are collected throughout the year and used for expenses.

Publications

A.C.A 25-1-204

Name	Statutory Authorization	Required for		# Of Copies	Reason (s) for Continued Publication and Distribution
		Governor	General Assembly		
None	N/A	N	N	0	N/A

Analysis of Budget Request

Appropriation / Program: C04 - Cash Operations

Funding Sources: 370-Dietetic Licensing Board-Cash

The Arkansas Dietetics Licensing Board was established by Act 392 of 1989, as amended. The Board is a cash agency funded from application and license renewal fees charged pursuant to Arkansas Code Annotated §17-83-203. Duties of the Board include the licensure and regulation of individuals qualified to engage in the practice of dietetics and other nutrition care services.

Base Level for this appropriation includes graduated salary increases of 3% to 1.5% each year over FY05 salary levels, along with related Personal Services Matching costs for one (1) Base Level position. This includes a \$600 minimum increase for employees earning \$20,000 or below. Included in Personal Services Matching is a \$40 increase in the monthly contribution for State employee's health insurance for a total State match of \$320 per month.

The Agency requests Base Level for this appropriation of \$31,134 in FY06 and \$31,846 for FY07.

The Executive Recommendation provides for the Agency Request. Expenditure of appropriation is contingent upon available funding.

Appropriation / Program Summary

Appropriation / Program: C04 Cash Operations
Funding Sources: 370-Dietetic Licensing Board-Cash

Commitment Item	Historical Data			Agency Request and Executive Recommendation					
	2003-2004 Actual	2004-2005 Budget	2004-2005 Authorized	2005-2006			2006-2007		
				Base Level	Agency	Executive	Base Level	Agency	Executive
Regular Salaries 5010000	11,993	15,447	15,090	16,047	16,047	16,047	16,647	16,647	16,647
#Positions	1	1	1	1	1	1	1	1	1
Personal Services Matching 5010003	5,481	6,031	6,032	6,858	6,858	6,858	6,970	6,970	6,970
Operating Expenses 5020002	3,995	8,229	8,229	8,229	8,229	8,229	8,229	8,229	8,229
Travel-Conference Fees 5050009	0	0	0	0	0	0	0	0	0
Professional Fees and Services 5060010	0	0	0	0	0	0	0	0	0
Data Processing 5090012	0	0	0	0	0	0	0	0	0
Capital Outlay 5120011	0	0	0	0	0	0	0	0	0
Total	21,469	29,707	29,351	31,134	31,134	31,134	31,846	31,846	31,846
Funding Sources									
Fund Balance 4000005	104,108	110,394		106,687	106,687	106,687	101,553	101,553	101,553
Cash Fund 4000045	27,755	26,000		26,000	26,000	26,000	26,000	26,000	26,000
Total Funding	131,863	136,394		132,687	132,687	132,687	127,553	127,553	127,553
Excess Appropriation/(Funding)	(110,394)	(106,687)		(101,553)	(101,553)	(101,553)	(95,707)	(95,707)	(95,707)
Grand Total	21,469	29,707		31,134	31,134	31,134	31,846	31,846	31,846

The FY05 Budgeted amount in Regular Salaries exceeds the authorized amount due to salary rate adjustments during the 2003-05 biennium.