

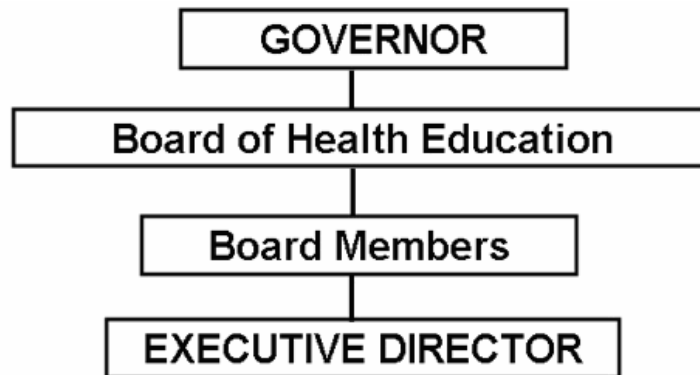
# AR BOARD OF HEALTH EDUCATION

## Enabling Laws

Act 887 of 2003  
A.C.A. §17-53-101

## History and Organization

The State Board of Health Education, authorized by A.C.A. §17-53-101 et seq., certifies and regulates persons engaged in the practice of health education. The Board is comprised of seven members appointed by the Governor and confirmed by the Senate who serve three year terms. The Board is a Cash Agency funded from fees used for operating expenses. Act 887 of 2003 provides for the Agency's 2003-2005 biennial operations.



## Agency Commentary

Agency request is Base Level for the 2005-2007 biennium.

## Audit Findings

DIVISION OF LEGISLATIVE AUDIT  
AUDIT OF :  
ARKANSAS BOARD OF HEALTH EDUCATION  
FOR THE YEAR ENDED JUNE 30, 2003

### Findings

THE 2004 FISCAL YEAR WAS THE FIRST YEAR FOR AN OPERATIONS APPROPRIATION FOR THE ARKANSAS BOARD OF HEALTH EDUCATION. AN AUDIT HAD NOT BEEN PREPARED AS OF THE PUBLICATION DATE OF THIS MANUAL.

### Recommendations

## Cash Fund Balance Description as of June 30, 2004

Fund Account	Balance	Type	Location
3190000	\$5,299	Checking	Bank of America

Statutory/Other Restrictions on use:

ACA 19-4-801

Statutory Provisions for Fees, Fines, Penalties:

ACA 19-4-801

Revenue Receipts Cycle:

Receive fees throughout the year.

Fund Balance Utilization:

Pay expense throughout the year as needed.

## Publications

### A.C.A 25-1-204

Name	Statutory Authorization	Required for		# Of Copies	Reason (s) for Continued Publication and Distribution
		Governor	General Assembly		
None	N/A	N	N	0	N/A

## **Analysis of Budget Request**

**Appropriation / Program:** B79 - Board of Health Education

**Funding Sources:** 319-Board of Health Education-Cash

The State Board of Health Education, authorized by ACA 17-53-101 et seq., certifies and regulates persons engaged in the practice of health education. The Board is comprised of seven members appointed by the Governor for three year terms and confirmed by the Senate. The Board is a Cash agency funded from fees used for operating expenses.

The Board requests Base Level of \$6,000 each year of the 2005-2007 biennium.

The Executive Recommendation provides for Agency Request.

## Appropriation / Program Summary

**Appropriation / Program:** B79 Board of Health Education  
**Funding Sources:** 319-Board of Health Education-Cash

Commitment Item	Historical Data			Agency Request and Executive Recommendation					
	2003-2004 Actual	2004-2005 Budget	2004-2005 Authorized	2005-2006			2006-2007		
				Base Level	Agency	Executive	Base Level	Agency	Executive
Operating Expenses 5020002	106	6,000	10,000	6,000	6,000	6,000	6,000	6,000	6,000
Travel-Conference Fees 5050009	0	0	0	0	0	0	0	0	0
Professional Fees and Services 5060010	0	0	0	0	0	0	0	0	0
Data Processing 5090012	0	0	0	0	0	0	0	0	0
Capital Outlay 5120011	0	0	0	0	0	0	0	0	0
<b>Total</b>	<b>106</b>	<b>6,000</b>	<b>10,000</b>	<b>6,000</b>	<b>6,000</b>	<b>6,000</b>	<b>6,000</b>	<b>6,000</b>	<b>6,000</b>
<b>Funding Sources</b>									
Fund Balance 4000005	5,405	5,704		1,204	1,204	1,204	409	409	409
Cash Fund 4000045	405	1,500		5,205	5,205	5,205	6,000	6,000	6,000
<b>Total Funding</b>	<b>5,810</b>	<b>7,204</b>		<b>6,409</b>	<b>6,409</b>	<b>6,409</b>	<b>6,409</b>	<b>6,409</b>	<b>6,409</b>
Excess Appropriation/(Funding)	(5,704)	(1,204)		(409)	(409)	(409)	(409)	(409)	(409)
<b>Grand Total</b>	<b>106</b>	<b>6,000</b>		<b>6,000</b>	<b>6,000</b>	<b>6,000</b>	<b>6,000</b>	<b>6,000</b>	<b>6,000</b>

The FY05 Budgeted amount in Operating Expense is decreased due to a revenue decline in the 2003-05 biennium.