

VETERINARY MEDICAL EXAMINING BOARD

Enabling Laws

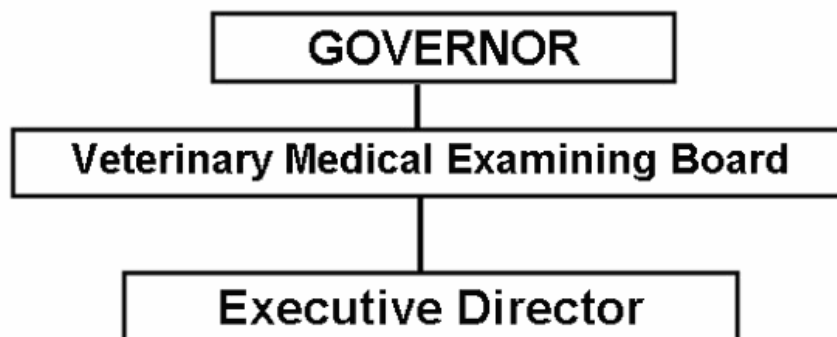
Act 170 of 2003
A.C.A. §17-101-201

History and Organization

MISSION: To administer the veterinary statutes with the highest degree of integrity, competence and efficiency commensurate with the professional standards of veterinarians and veterinary technicians.

STATUTORY RESPONSIBILITY: To examine and determine the qualifications and fitness of applicants to practice general veterinary medicine or any specialty area thereof, and certification of veterinary technicians; to issue, renew, deny, suspend or revoke licenses or certificates or otherwise discipline veterinarians or veterinary technicians; to conduct investigations on persons practicing veterinary medicine without a license.

PRIMARY ACTIVITIES: 1) Administer the Written State Jurisprudence Exam once a year to all qualified veterinary applicants, 2) Grant a license to those who pass the State Board and otherwise qualify, 3) Evaluate qualifications of education, skill and experience for certification of a person as a veterinary technician, 4) Annually register all DVM's and CVT's and issue them a certificate to practice, 5) Investigate violations of the Veterinary Medical Practice Act and Regulations and take disciplinary action where appropriate, 6) Monitor mandatory continuing professional education on DVM's and CVT's who hold a license or certificate to practice, and 7) hold formal or informal hearings when needed.



Agency Commentary

The Arkansas Veterinary Medical Examining Board is responsible for safeguarding the people of the State of Arkansas against dishonest, incompetent and unprincipled practitioners of veterinary medicine. The operations of the Board are funded from receipts of fees and fines charged by the agency.

Projected fee receipts will provide revenue to meet the costs of the requested Base Level budget for

2005-2007 biennium and the following Change Level requests:

Regular Salaries:

The Board is requesting a 5% + cost of living increase in the line item salary of the Executive Secretary in FY06 and FY07 due to the increased duties and responsibilities of this position.

Operating Expenses Appropriation:

An additional \$500 for FY06 & FY07 for a web site monthly maintenance fee that will be implemented in FY05 is also requested.

Audit Findings

DIVISION OF LEGISLATIVE AUDIT
AUDIT OF :
VETERINARY MEDICAL EXAMINING BOARD
FOR THE YEAR ENDED JUNE 30, 2003

Findings	Recommendations
None	None

Employment Summary

	Male	Female	Total	%
White Employees	0	1	1	100 %
Black Employees	0	0	0	0 %
Other Racial Minorities	0	0	0	0 %
Total Minorities			0	0 %
Total Employees			1	100 %

Analysis of Budget Request

Appropriation / Program: 470 - Veterinary Medical Examining Board

Funding Sources: SXV-Veterinary Medical Examining Board

The Veterinary Medical Examining Board is responsible for determining the qualifications of applicants for a license to practice general veterinary medicine or any specialty area and certification of veterinary technicians. The Board was created by A.C.A. §17-101-201 and is funded by special revenues derived from fees charged its member constituents.

Base Level for this appropriation includes graduated salary increases of 3% to 1.5% each year over FY05 salary levels, along with related Personal Services Matching costs for one (1) Base Level position. This includes a \$600 minimum increase for employees earning \$20,000 or below. Included in Personal Services Matching is a \$40 increase in the monthly contribution for State employee's health insurance for a total State match of \$320 per month.

The Board is requesting Base Level of \$100,677 for FY06 & \$102,405 for FY07 plus Change Level requests of \$1,618 in FY06 and \$2,829 in FY07. These requests include a \$500 increase each year for Operating Expense, for website development and maintenance, and a Extraordinary Salary Increase for the Executive Secretary each year due to increased work load and responsibilities.

The Executive Recommendation provides for Agency Request with the exception of the Extraordinary Salary Increase for the Executive Secretary.

Appropriation / Program Summary

Appropriation / Program: 470 Veterinary Medical Examining Board
Funding Sources: SXV-Veterinary Medical Examining Board

Commitment Item	Historical Data			Agency Request and Executive Recommendation					
	2003-2004 Actual	2004-2005 Budget	2004-2005 Authorized	2005-2006			2006-2007		
				Base Level	Agency	Executive	Base Level	Agency	Executive
Regular Salaries 5010000	46,315	47,081	47,081	48,493	49,435	48,493	49,947	51,907	49,947
#Positions	1	1	1	1	1	1	1	1	1
Extra Help 5010001	2,330	9,775	9,775	9,775	9,775	9,775	9,775	9,775	9,775
#Extra Help	2	3	3	3	3	3	3	3	3
Personal Services Matching 5010003	11,403	12,969	12,452	13,710	13,886	13,710	13,984	14,353	13,984
Operating Expenses 5020002	10,754	13,998	13,998	13,998	14,498	14,498	13,998	14,498	14,498
Travel-Conference Fees 5050009	0	281	281	281	281	281	281	281	281
Professional Fees and Services 5060010	1,225	2,849	2,849	2,849	2,849	2,849	2,849	2,849	2,849
Data Processing 5090012	0	0	0	0	0	0	0	0	0
Capital Outlay 5120011	0	0	0	0	0	0	0	0	0
Rent/Member Reimbursement 5900046	8,928	11,571	11,571	11,571	11,571	11,571	11,571	11,571	11,571
Total	80,955	98,524	98,007	100,677	102,295	101,177	102,405	105,234	102,905
Funding Sources									
Fund Balance 4000005	219,893	236,418		232,894	232,894	232,894	225,599	225,599	226,717
Special Revenue 4000030	97,480	95,000		93,382	95,000	95,000	92,171	95,000	95,000
Total Funding	317,373	331,418		326,276	327,894	327,894	317,770	320,599	321,717
Excess Appropriation/(Funding)	(236,418)	(232,894)		(225,599)	(225,599)	(226,717)	(215,365)	(215,365)	(218,812)
Grand Total	80,955	98,524		100,677	102,295	101,177	102,405	105,234	102,905

The FY05 Budgeted amount in Personal Service Matching exceeds the authorized amount due to matching rate adjustments during the 2003-05 biennium.

Change Level by Appropriation

Appropriation / Program: 470-Veterinary Medical Examining Board

Funding Sources: SXV-Veterinary Medical Examining Board

Agency Request

Change Level		2005-2006	Pos	Cumulative	% of BL	2006-2007	Pos	Cumulative	% of BL
BL	Base Level	100,677	1	100,677	100.0	102,405	1	102,405	100.0
C01	Existing Program	500	0	101,177	100.5	500	0	102,905	100.4
C15	Ex Salary Increase	1,118	0	102,295	101.6	2,329	0	105,234	102.7

Executive Recommendation

Change Level		2005-2006	Pos	Cumulative	% of BL	2006-2007	Pos	Cumulative	% of BL
BL	Base Level	100,677	1	100,677	100.0	102,405	1	102,405	100.0
C01	Existing Program	500	0	101,177	100.5	500	0	102,905	100.4
C15	Ex Salary Increase	0	0	101,177	100.5	0	0	102,905	100.4

Justification

C01	Increase requested for website monthly maintenance fee.
C15	Extraordinary Salary Increase requested for 1,118 in FY06 and 2,329 in FY07 for the Veterinary Executive Secretary for increased duties and responsibilities.