

AR BEEF COUNCIL

Enabling Laws

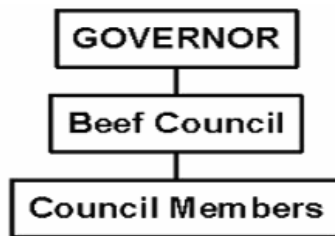
Act 27 of 2003
A.C.A. §2-35-303

History and Organization

The Arkansas Beef Council was created Arkansas Code Annotated §2-35-303. Its mission is to promote the growth and development of the cattle industry in Arkansas through programs of research, promotion and market development activities.

The Council is made up of seven members appointed by the Governor. Three are nominated by the Arkansas Cattlemen's Association, three by the Arkansas Farm Bureau Federation, and one member must be an Arkansas auction market operator. The Council is administered through an agreement between the Arkansas Beef Council and the Arkansas Farm Bureau Federation.

The Council administers a \$1.00 per head assessment on all cattle sold in the State. The assessment is collected by the Miscellaneous Tax Department. Funds are deposited in a State Treasury account and are disbursed by the Council to fund beef research and promotion efforts.



Agency Commentary

The budget request for the Arkansas Beef Council for the 2005-2007 Biennium is Base Level and will be funded entirely by special revenues collected from a \$1.00 per head assessment on cattle sold in the State.

Allocation of these funds will be made and approved by the Arkansas Beef Council. Distributions will be made to fund beef-related research at the University of Arkansas; transmitted to the national organization (Cattlemen's Beef Board) as required by the federal Beef Research and Promotion Act. Various promotion and information projects will be conducted within the State as approved and administered by the Council.

Projects are individually approved and monitored by the Council. Project proposals are addressed during the third quarter of the fiscal year and an annual operating plan developed prior to the start of the next fiscal year.

Audit Findings

DIVISION OF LEGISLATIVE AUDIT
AUDIT OF :
ARKANSAS BEEF COUNCIL
FOR THE YEAR ENDED JUNE 30, 2003

Findings

Recommendations

None

None

Publications

A.C.A 25-1-204

Name	Statutory Authorization	Required for		# Of Copies	Reason (s) for Continued Publication and Distribution
		Governor	General Assembly		
Beef Checkoff Update	2-35-301	N	N	30,000	Provides an update to cattle producers whose cattle are assessed on the projects and activities of the council

Analysis of Budget Request

Appropriation / Program: 675 - Beef Council-Operations

Funding Sources: SBC-Arkansas Beef Council Fund

The Arkansas Beef Council is composed of seven (7) members appointed by the Governor and represents Arkansas Farm Bureau Federation, Arkansas Cattleman's Association, and Arkansas livestock market operators. The Council is authorized by A.C.A. §2-35-303. Activities of the Beef Council are funded from the receipt of assessment fees charged and collected by the Agency. Fees of \$1.00 per head of cattle sold are collected and approximately one-half of this amount is remitted to the National Beef Promotion and Research Board for consumer and industry information programs, advertising and research programs, and beef-related promotion. The line item for Research/Development is utilized in making these payments.

The Agency is requesting a Base Level budget of \$1,100,000 each year of the 2005-2007 biennium.

The Executive Recommendation provides for the Agency Request.

Appropriation / Program Summary

Appropriation / Program: 675 Beef Council-Operations
Funding Sources: SBC-Arkansas Beef Council Fund

Commitment Item	Historical Data			Agency Request and Executive Recommendation					
	2003-2004 Actual	2004-2005 Budget	2004-2005 Authorized	2005-2006			2006-2007		
				Base Level	Agency	Executive	Base Level	Agency	Executive
Operating Expenses 5020002	6,592	50,000	50,000	50,000	50,000	50,000	50,000	50,000	50,000
Travel-Conference Fees 5050009	0	10,000	10,000	10,000	10,000	10,000	10,000	10,000	10,000
Professional Fees and Services 5060010	0	3,000	3,000	3,000	3,000	3,000	3,000	3,000	3,000
Data Processing 5090012	0	0	0	0	0	0	0	0	0
Capital Outlay 5120011	0	0	0	0	0	0	0	0	0
Research & Development 5900031	1,016,059	1,037,000	1,500,000	1,037,000	1,037,000	1,037,000	1,037,000	1,037,000	1,037,000
Total	1,022,651	1,100,000	1,563,000	1,100,000	1,100,000	1,100,000	1,100,000	1,100,000	1,100,000
Funding Sources									
Fund Balance 4000005	183,958	148,226		448,226	448,226	448,226	748,226	748,226	748,226
Special Revenue 4000030	986,919	1,400,000		1,400,000	1,400,000	1,400,000	1,400,000	1,400,000	1,400,000
Total Funding	1,170,877	1,548,226		1,848,226	1,848,226	1,848,226	2,148,226	2,148,226	2,148,226
Excess Appropriation/(Funding)	(148,226)	(448,226)		(748,226)	(748,226)	(748,226)	(1,048,226)	(1,048,226)	(1,048,226)
Grand Total	1,022,651	1,100,000		1,100,000	1,100,000	1,100,000	1,100,000	1,100,000	1,100,000