

AR CORN & GRAIN SORGHUM PROMOTION BOARD

Enabling Laws

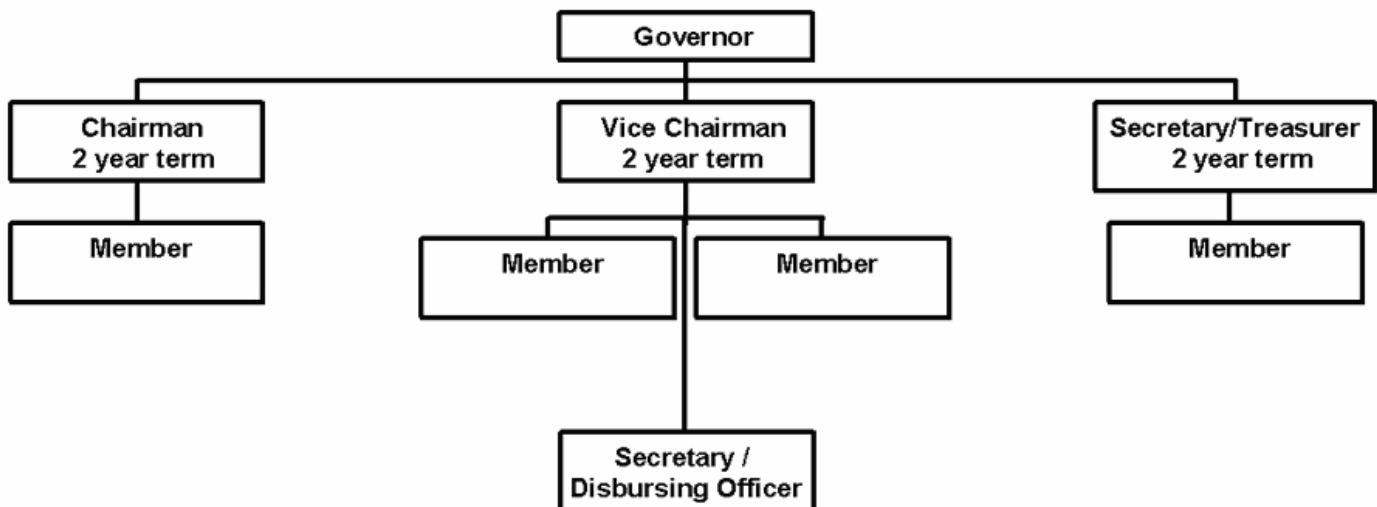
Act 8 of 2003
A.C.A. §2-20-804

History and Organization

The Arkansas Corn and Grain Sorghum Board was created by Act 271 of 1997. Its mission is to promote the growth and development of the corn and grain sorghum industries in Arkansas by research, extension, promotion and market development, thereby promoting the general welfare of the people of Arkansas.

The Board is made up of seven members appointed by the Governor. Three are nominated by and represent Arkansas Farm Bureau Federation, and two each are nominated by and represent Riceland Foods, Inc. and The Agriculture Council of Arkansas. The Board is administered by the Executive Vice President of Arkansas Farm Bureau Federation or his designee.

The Board administers a one cent per bushel assessment on all corn and grain sorghum grown in Arkansas for market. The funds enter the State Treasury, and are disbursed by the Board to fund corn and grain sorghum research and promotion efforts.



Agency Commentary

The budget request of the Arkansas Corn and Grain Sorghum Board for the 2005-2007 biennium is Base Level and will be funded entirely by special revenues collected from a one cent per bushel check off on all corn and grain sorghum produced in Arkansas for market.

An allocation of these special revenue funds will be used to fund corn and grain sorghum related

research projects through the University of Arkansas and private research companies as the Board sees fit. Projects will be individually approved and monitored by the Board. The Board welcomes project proposals at their first quarter meeting.

Audit Findings

DIVISION OF LEGISLATIVE AUDIT
 AUDIT OF :
 ARKANSAS CORN AND GRAIN SORGHUM PROMOTION BOARD
 FOR THE YEAR ENDED JUNE 30, 2003

Findings	Recommendations
None	None

Publications

A.C.A 25-1-204

Name	Statutory Authorization	Required for		# Of Copies	Reason (s) for Continued Publication and Distribution
		Governor	General Assembly		
None	N/A	N	N	0	N/A

Analysis of Budget Request

Appropriation / Program: 686 - Corn and Grain Sorghum

Funding Sources: SGS-Arkansas Corn and Grain Sorghum Promotion Board

The Corn and Grain Sorghum Promotion Board, authorized by A.C.A. §2-20-804, is composed of seven (7) producer members appointed by the Governor. The Board members consists of individuals nominated by the Arkansas Farm Bureau Federation, Riceland Foods, Inc., and the Agricultural Council of Arkansas. The purpose of the Board is to promote the growth and development of the corn and grain sorghum industries in the State of Arkansas. The Board is funded entirely by special revenues collected from a one cent per bushel assessment at the first point of sale or when the corn or grain sorghum enters the USDA loan program and is applicable to all corn and grain sorghum produced in Arkansas for market. The Board utilizes these funds to finance Operating Expenses and to conduct a program of research, market development, and promotion.

A Base Level budget of \$627,200 is requested each year of the 2005-2007 biennium.

The Executive Recommendation provides for the Agency Request.

Appropriation / Program Summary

Appropriation / Program: 686 Corn and Grain Sorghum
Funding Sources: SGS-Arkansas Corn and Grain Sorghum Promotion Board

Commitment Item	Historical Data			Agency Request and Executive Recommendation					
	2003-2004 Actual	2004-2005 Budget	2004-2005 Authorized	2005-2006			2006-2007		
				Base Level	Agency	Executive	Base Level	Agency	Executive
Operating Expenses 5020002	22,339	40,000	40,000	40,000	40,000	40,000	40,000	40,000	40,000
Travel-Conference Fees 5050009	0	0	0	0	0	0	0	0	0
Professional Fees and Services 5060010	0	0	0	0	0	0	0	0	0
Data Processing 5090012	0	0	0	0	0	0	0	0	0
Capital Outlay 5120011	0	0	0	0	0	0	0	0	0
Research & Development - 31 5900031	321,159	587,200	587,200	587,200	587,200	587,200	587,200	587,200	587,200
Total	343,498	627,200	627,200	627,200	627,200	627,200	627,200	627,200	627,200
Funding Sources									
Fund Balance 4000005	140,932	248,662		161,462	161,462	161,462	74,262	74,262	74,262
Special Revenue 4000030	451,228	540,000		540,000	540,000	540,000	580,000	580,000	580,000
Total Funding	592,160	788,662		701,462	701,462	701,462	654,262	654,262	654,262
Excess Appropriation/(Funding)	(248,662)	(161,462)		(74,262)	(74,262)	(74,262)	(27,062)	(27,062)	(27,062)
Grand Total	343,498	627,200		627,200	627,200	627,200	627,200	627,200	627,200