

# AR CATFISH PROMOTION BOARD

## Enabling Laws

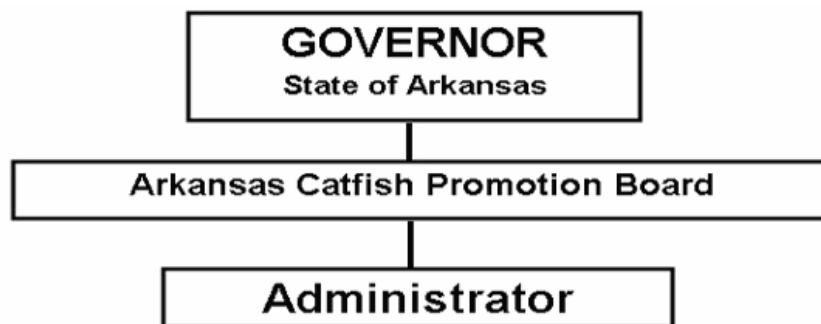
Act 25 of 2003  
A.C.A. §2-9-103-112

## History and Organization

The Arkansas Catfish Promotion Board was created by Act 790 of 1999 with the responsibility to promote the growth and development of the catfish industry in Arkansas through research, promotion, and market development. The Board consists of seven producers appointed by the Governor. Three members are nominated by and represent Arkansas Farm Bureau, and four members are nominated by and represent the Catfish Farmers of Arkansas. The Board is administered by the Executive Vice-President of Arkansas Farm Bureau Federation or his designee.

Special Revenues fund the operations of the Board. A one-dollar per ton assessment on all catfish feed purchased by commercial Arkansas catfish producers is used to fund research and promotion efforts.

The budget request is for continuation of the Base Level only. The line item for Research / Development, representing more than half of the entire budget, is used to fund catfish related research projects through the University of Arkansas and private research companies. The Board approves and monitors all projects.



## Agency Commentary

The budget request of the Arkansas Catfish Promotion Board for the 2005-2007 Biennium is Base Level and will be funded entirely by special revenues collected from a one dollar per ton check off on all catfish feed purchased by commercial Arkansas catfish producers.

An allocation of these special revenue funds will be used to fund catfish related research and promotion projects through the University of Arkansas, private research companies, and promotion organizations as the Board sees fit. Projects will be individually approved and monitored by the Board. The Board welcomes project proposals at their last quarterly meeting each year.

## Audit Findings

DIVISION OF LEGISLATIVE AUDIT  
AUDIT OF :  
ARKANSAS CATFISH PROMOTION BOARD  
FOR THE YEAR ENDED JUNE 30, 2003

Findings

Recommendations

None

None

## Publications

### A.C.A 25-1-204

Name	Statutory Authorization	Required for		# Of Copies	Reason (s) for Continued Publication and Distribution
		Governor	General Assembly		
None	N/A	N	N	0	N/A

## **Analysis of Budget Request**

**Appropriation / Program:** 745 - Catfish Promotion

**Funding Sources:** SCB-Arkansas Catfish Promotion Fund

The Arkansas Catfish Promotion Board was created by Act 1205 of 1999 with the responsibility to promote the growth and development of the catfish industry in Arkansas through research, promotion, and market development. The Board consists of seven producers appointed by the Governor. Three members are nominated by and represent Arkansas Farm Bureau, and four members are nominated by and represent The Catfish Farmers of Arkansas. The Board is administered by the Executive Vice President of Arkansas Farm Bureau Federation or his designee.

Special Revenues fund the operations of the Board. A one-dollar per ton assessment on all catfish feed purchased by commercial Arkansas catfish producers is used to fund research and promotion efforts.

The budget request is for continuation of the Base Level of \$255,000 each year of the 2005-2007 biennium. The line item for Research/Development, representing more than half of the entire budget, is used to fund catfish related research projects through the University of Arkansas and private research companies. The Board approves and monitors all projects.

The Executive Recommendation provides for the Agency Request.

## Appropriation / Program Summary

**Appropriation / Program:** 745 Catfish Promotion  
**Funding Sources:** SCB-Arkansas Catfish Promotion Fund

Commitment Item	Historical Data			Agency Request and Executive Recommendation					
	2003-2004 Actual	2004-2005 Budget	2004-2005 Authorized	2005-2006			2006-2007		
				Base Level	Agency	Executive	Base Level	Agency	Executive
Operating Expenses 5020002	0	5,000	5,000	5,000	5,000	5,000	5,000	5,000	5,000
Travel-Conference Fees 5050009	0	0	0	0	0	0	0	0	0
Professional Fees and Services 5060010	0	0	0	0	0	0	0	0	0
Data Processing 5090012	0	0	0	0	0	0	0	0	0
Promotional Items 5090028	0	50,000	50,000	50,000	50,000	50,000	50,000	50,000	50,000
Capital Outlay 5120011	0	0	0	0	0	0	0	0	0
Research Development 5900031	39,800	150,000	150,000	150,000	150,000	150,000	150,000	150,000	150,000
Consumer Information 5900046	18,543	50,000	50,000	50,000	50,000	50,000	50,000	50,000	50,000
<b>Total</b>	<b>58,343</b>	<b>255,000</b>	<b>255,000</b>	<b>255,000</b>	<b>255,000</b>	<b>255,000</b>	<b>255,000</b>	<b>255,000</b>	<b>255,000</b>
<b>Funding Sources</b>									
Fund Balance 4000005	140,291	233,085		88,085	88,085	88,085	3,085	3,085	3,085
Special Revenue 4000030	151,137	110,000		170,000	170,000	170,000	255,000	255,000	255,000
<b>Total Funding</b>	<b>291,428</b>	<b>343,085</b>		<b>258,085</b>	<b>258,085</b>	<b>258,085</b>	<b>258,085</b>	<b>258,085</b>	<b>258,085</b>
Excess Appropriation/(Funding)	(233,085)	(88,085)		(3,085)	(3,085)	(3,085)	(3,085)	(3,085)	(3,085)
<b>Grand Total</b>	<b>58,343</b>	<b>255,000</b>		<b>255,000</b>	<b>255,000</b>	<b>255,000</b>	<b>255,000</b>	<b>255,000</b>	<b>255,000</b>