

PAROLE BOARD

Enabling Laws

Act 165 of 2010
A.C.A. §16-93-201, et seq.

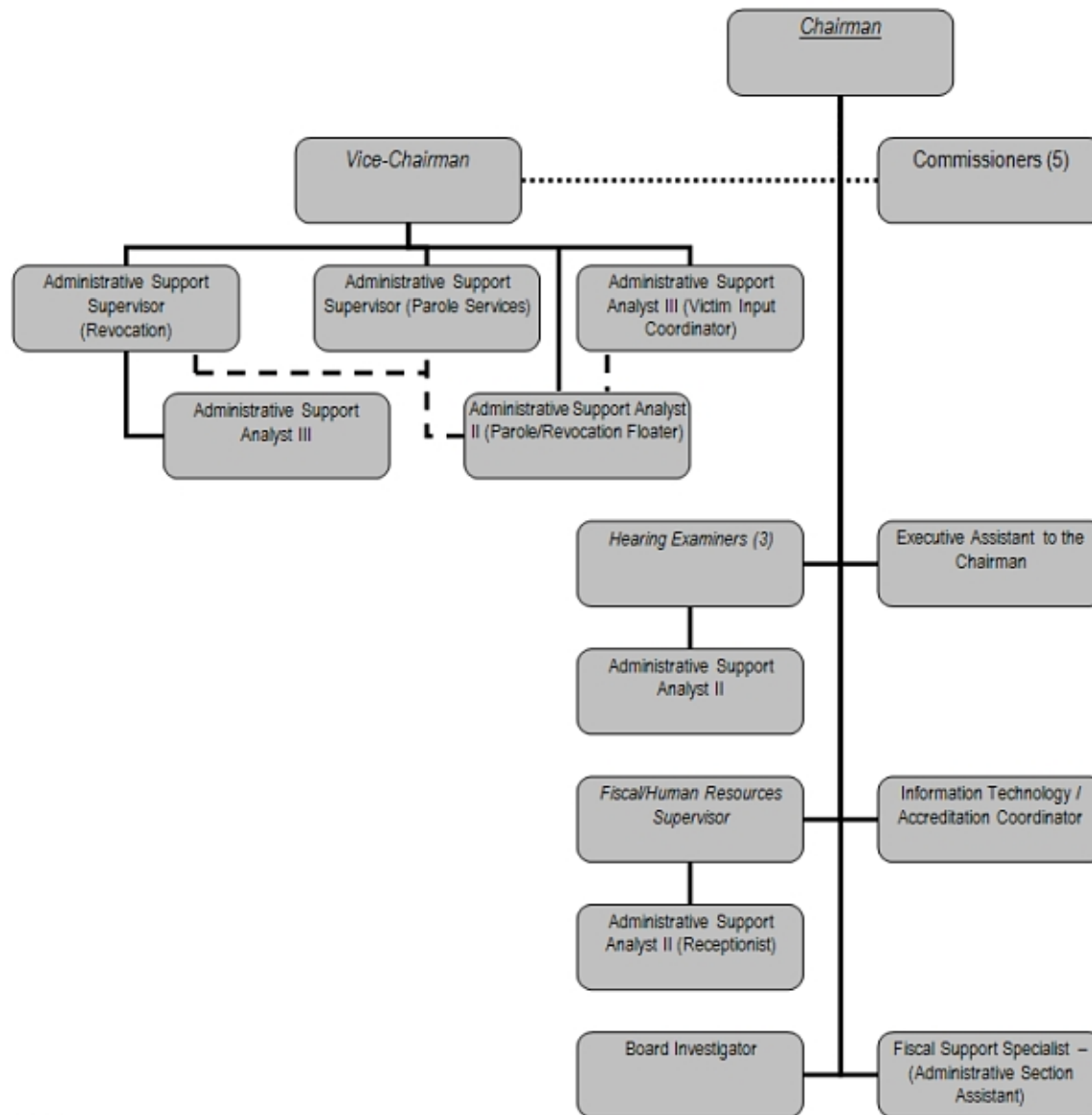
History and Organization

The Parole Board is dedicated to the process of promoting public safety by the return of offenders into the community through supervised, conditional release. The goal is to guide and monitor the transition from confinement to the successful completion of supervision within the community. The State Board of Parole and Community Rehabilitation was created by Acts 937 of 1989, with three (3) full-time members and four (4) part-time members.

During the 79th General Assembly Regular Session the name of the State Board of Parole and Community Rehabilitation was changed to the Post Prison Transfer Board. This was followed by Act 285 & 361 of 1995, to provide that the Post Prison Transfer Board be comprised of five (5) full-time members and two (2) part-time members. Act 979 of 1999, authorized a change to six (6) full-time members and one (1) part-time member. The staff consisted of three (3) Revocation Hearing Examiners and seven (7) Clerks for a total of 16 authorized positions.

During the 85th General Assembly Regular Session, Act 1033 of 2005 changed the name of the Post Prison Transfer Board to the Parole Board and authorized three (3) additional clerical staff. The staff consisted of three (3) Revocation Hearing Examiners, five (5) Administrative Assistants, three (3) Secretaries, one (1) Management Project Analyst and one (1) Agency Manager for a total of 19 authorized positions.

During the 86th General Assembly Regular Session, Act 697 of 2007 authorized two (2) additional support staff members and changed the composition of the Board to seven (7) full-time members to be appointed from the state at large by the Governor and confirmed by the Senate. The support staff consists of one (1) Executive Assistant to the Director, three (3) Hearing Examiners, one (1) Investigator, one (1) Fiscal Support Supervisor, one (1) Information Technology/Accreditation Coordinator, two (2) Administrative Support Supervisors, one (1) Fiscal Support Specialist, three (3) Administrative Support Specialists II and two (2) Administrative Support Specialist III for a total of 22 authorized positions.



Notes

- (1) All Board members report to the Governor through their designee, the Board Chairman
- (2) The Parole/Revocation Floater will report to the Vice-Chairman, with their workload assigned as indicated.
- (3) Positions that are in *italics* have supervisory responsibility.

Agency Commentary

The Arkansas Parole Board (APB) is responsible for conducting parole hearings throughout the State, make decisions on conditional release of inmates for correctional facilities, and review all pardon and executive clemency applications and make non-binding recommendations to the Governor. They are responsible to grant, deny, suspend, and revoke parole in accordance with legislative criteria: the risk posed to the community by the offender's potential to re-offend and the rehabilitation and reintegration of the offender back into the community. The Chairman of the Parole Board also serves as an ex-officio member of the Board of Corrections.

Over the last 10 years, the parole caseload has grown 167.4%. Arkansas' parole system is challenged by the continued increase in the number of offenders released under parole supervision. During the past five (5) years, the number of supervised parolees has increased by 48.5%. According to Arkansas Department of Correction (ADC), the prison population on June 30, 2008 was 14,700. During FY08, 12,178 individuals were given parole consideration by means of a hearing or file review by the Board, with 5,603 being face-to-face interviews.

The Department of Community Correction (DCC) Institutional Release staff prepare case records for us which helps APB members in conducting Arkansas Department of Correction inmate case reviews and hearings to determine parole, as required by Arkansas Code Annotated § 16-93-203. Depending on the date of a crime or sentence, some inmates are transfer eligible (TE) and other are parole eligible (PE). Some inmates are not eligible for parole, but may be considered for release under clemency laws.

The Arkansas Parole Board is requesting a Base Level budget for the 2011-2013 biennium.

Audit Findings

DIVISION OF LEGISLATIVE AUDIT
AUDIT OF :
PAROLE BOARD

Findings

Recommendations

A separate report for this Agency was not issued. However, financial activity for the Agency was included in the audit of the State's CAFR for the year ended June 30, 2009.

Employment Summary

| | Male | Female | Total | % |
|-------------------------|------|--------|-------|-------|
| White Employees | 4 | 5 | 9 | 45 % |
| Black Employees | 4 | 7 | 11 | 55 % |
| Other Racial Minorities | 0 | 0 | 0 | 0 % |
| Total Minorities | | | 11 | 55 % |
| Total Employees | | | 20 | 100 % |

Publications

A.C.A. 25-1-204

| Name | Statutory Authorization | Required for | | # of Copies | Reason(s) for Continued Publication and Distribution |
|---------------|-------------------------|--------------|------------------|-------------|--|
| | | Governor | General Assembly | | |
| Annual Report | ACA §16-93-202 | Y | Y | 22 | Information Purposes |

Agency Position Usage Report

| FY2008 - 2009 | | | | | | FY2009 - 2010 | | | | | FY2010 - 2011 | | | | | | |
|-------------------|----------|----------|-------|------------------|------------------------|-------------------|----------|----------|-------|------------------|------------------------|-------------------|----------|----------|-------|------------------|------------------------|
| Authorized in Act | Budgeted | | | Unbudgeted Total | % of Authorized Unused | Authorized in Act | Budgeted | | | Unbudgeted Total | % of Authorized Unused | Authorized in Act | Budgeted | | | Unbudgeted Total | % of Authorized Unused |
| | Filled | Unfilled | Total | | | | Filled | Unfilled | Total | | | | Filled | Unfilled | Total | | |
| 22 | 20 | 2 | 22 | 0 | 9.09 % | 22 | 20 | 2 | 22 | 0 | 9.09 % | 22 | 20 | 2 | 22 | 0 | 9.09 % |

Analysis of Budget Request

Appropriation: 306 - Parole Board Operations

Funding Sources: HUA - Miscellaneous Agencies Fund

The Parole Board consists of seven members, which are appointed by the Governor and confirmed by the Senate for a seven-year term. Board members regularly conduct parole hearings throughout the State of Arkansas and make decisions on conditional releases of inmates in correctional facilities. The Board is also responsible for reviewing all pardon and executive clemency applications and making non-binding recommendations to the Governor. The Chairman of the Parole Board also serves as an ex-officio member of the Board of Corrections.

The funding for Parole Board is from general revenue. The Parole Board is authorized to receive assistance from the Department of Correction (DOC) and the Department of Community Correction (DCC), as provided by Section 3 of Act 165 of 2010.

Base Level salaries and matching do not include appropriation for a Cost of Living Adjustment or Career Service Payments. The Base Level salary of the unclassified position reflects the FY11 line item maximum.

The Agency Request is for Base Level for the 2011-2013 biennium.

The Executive Recommendation provides for Agency Request.

Appropriation Summary

Appropriation: 306 - Parole Board Operations
Funding Sources: HUA - Miscellaneous Agencies Fund

Historical Data

Agency Request and Executive Recommendation

| Commitment Item | | Historical Data | | | Agency Request and Executive Recommendation | | | Agency Request and Executive Recommendation | | |
|--------------------------------|---------|---------------------|---------------------|-------------------------|---|------------------|------------------|---|------------------|------------------|
| | | 2009-2010 Actual | 2010-2011 Budget | 2010-2011 Authorized | 2011-2012 | | | 2012-2013 | | |
| | | | | | Base Level | Agency | Executive | Base Level | Agency | Executive |
| Regular Salaries | 5010000 | 1,155,477 | 1,192,019 | 1,228,405 | 1,186,197 | 1,186,197 | 1,186,197 | 1,186,197 | 1,186,197 | 1,186,197 |
| #Positions | | 22 | 22 | 22 | 22 | 22 | 22 | 22 | 22 | 22 |
| Personal Services Matching | 5010003 | 309,301 | 353,093 | 342,156 | 369,380 | 369,380 | 369,380 | 369,380 | 369,380 | 369,380 |
| Operating Expenses | 5020002 | 275,209 | 270,056 | 300,847 | 270,056 | 270,056 | 270,056 | 270,056 | 270,056 | 270,056 |
| Conference & Travel Expenses | 5050009 | 1,527 | 2,500 | 3,000 | 2,500 | 2,500 | 2,500 | 2,500 | 2,500 | 2,500 |
| Professional Fees | 5060010 | 0 | 0 | 0 | 0 | 0 | 0 | 0 | 0 | 0 |
| Data Processing | 5090012 | 0 | 0 | 0 | 0 | 0 | 0 | 0 | 0 | 0 |
| Capital Outlay | 5120011 | 0 | 500 | 880 | 0 | 0 | 0 | 0 | 0 | 0 |
| Total | | 1,741,514 | 1,818,168 | 1,875,288 | 1,828,133 | 1,828,133 | 1,828,133 | 1,828,133 | 1,828,133 | 1,828,133 |
| Funding Sources | | | | | | | | | | |
| General Revenue | 4000010 | 1,741,514 | 1,818,168 | | 1,828,133 | 1,828,133 | 1,828,133 | 1,828,133 | 1,828,133 | 1,828,133 |
| Total Funding | | 1,741,514 | 1,818,168 | | 1,828,133 | 1,828,133 | 1,828,133 | 1,828,133 | 1,828,133 | 1,828,133 |
| Excess Appropriation/(Funding) | | 0 | 0 | | 0 | 0 | 0 | 0 | 0 | 0 |
| Grand Total | | 1,741,514 | 1,818,168 | | 1,828,133 | 1,828,133 | 1,828,133 | 1,828,133 | 1,828,133 | 1,828,133 |

The FY11 Budget amount in Personal Services Matching exceeds the authorized amount due to matching rate adjustments during the 2009-2011 biennium.