

ARKANSAS RICE RESEARCH & PROMOTION BOARD

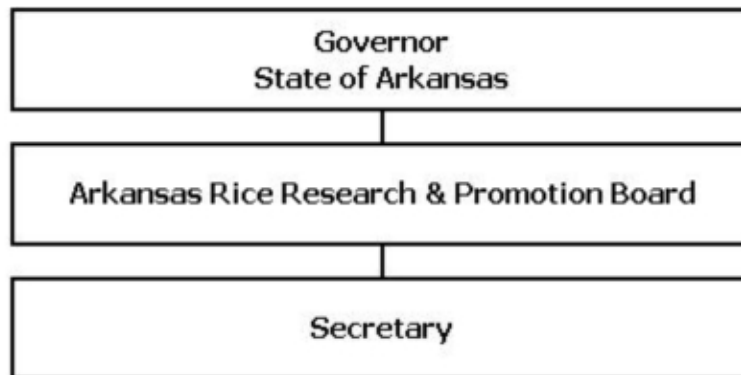
Enabling Laws

Act 164 of 2014
A.C.A. §2-20-505 et seq.

History and Organization

The Arkansas Rice Research and Promotion Board was established by Act 725 of the 1985 General Assembly to provide rice producers in Arkansas an organization through which they can work for the improvement of the rice industry. The legislation created a nine-member board appointed by the Governor from nominations submitted by certain rice-related organizations to administer the program. It is the responsibility of the Board to plan and conduct a program of research, extension, promotion and market development to foster the growth and development of the Arkansas rice industry.

The initial legislation established a producer-paid assessment of two cents per bushel of all rice produced in Arkansas with an automatic escalation to three cents per bushel after a specified period of time. Subsequently, Act 344 of 1995 provided for a referendum of producers on the question of reducing the producer-paid assessment for research and extension program funding to a rate not more than 1.5 cents per bushel, instituting a buyer-paid assessment of 1.35 cents per bushel for promotion and market development funding, and to make both assessments nonrefundable. Producers overwhelmingly ratified the proposed changes in a referendum conducted by the Board in February of 1996. The changes became effective August 1, 1996. Prior to the referendum, the Board made a commitment to the producers to set the producer-paid assessment rate at 1.15 cents per bushel for a minimum of two years. Act 16 of 1999 provided for equal assessment of 1.35 cents per bushel for both the producer and the buyer portions of the program.



Agency Commentary

The Arkansas Rice Research and Promotion Board budget is funded entirely by special revenues collected from an assessment on all rice produced in Arkansas. The assessment rate is \$2.70 per bushel on all rice grown for market in Arkansas.

The Board is requesting Base Level, which includes \$6,980,696 each year of the biennium. A very limited amount of funds is allocated each year for administrative and board related expenses, while most of the request is in categories that will allow funding of programs directly related to the Research and Development objectives of the Board.

Audit Findings

DIVISION OF LEGISLATIVE AUDIT
 AUDIT OF :
 ARKANSAS RICE RESEARCH AND PROMOTION BOARD
 FOR THE YEAR ENDED JUNE 30, 2012

Findings	Recommendations
None	None

State Contracts Over \$50,000 Awarded To Minority Owned Businesses Fiscal Year 2014

None

Publications

A.C.A. 25-1-201 et seq.

Name	Statutory Authorization	Required for		# of Copies	Reason(s) for Continued Publication and Distribution	Unbound Black & White Copies Produced During the Last Two Years	Cost of Unbound Copies Produced During the Last Two Years
		Governor	General Assembly				
None	N/A	N	N	0	N/A	0	0.00

Agency Position Usage Report

FY2012 - 2013						FY2013 - 2014						FY2014 - 2015					
Authorized in Act	Budgeted			Unbudgeted Total	% of Authorized Unused	Authorized in Act	Budgeted			Unbudgeted Total	% of Authorized Unused	Authorized in Act	Budgeted			Unbudgeted Total	% of Authorized Unused
	Filled	Unfilled	Total				Filled	Unfilled	Total				Filled	Unfilled	Total		
0	0	0	0	0	0.00 %	0	0	0	0	0	0.00 %	0	0	0	0	0	0.00 %

Analysis of Budget Request

Appropriation: 998 - Rice Research and Promotion

Funding Sources: SRP - AR Rice Research and Promotion Fund

The Arkansas Rice Research and Promotion Board was established in 1985 to improve the profitability of growing rice in Arkansas by conducting a program of research, extension and market development.

The Board is funded entirely from special revenue which is collected from assessments on all rice produced in Arkansas. The assessments consist of \$1.35 per bushel of rice grown in Arkansas paid by the producer, and an assessment of \$1.35 per bushel paid by the first point of sale buyer. The funds raised by the producer assessment are reserved for the research program, and the buyer funds are reserved for promotion and market development activities.

The Board requests Base Level appropriation in the amount of \$6,980,696 each year of the biennium.

The Executive Recommendation provides for the Agency Request. Expenditure of appropriation is contingent upon available funding.

Appropriation Summary

Appropriation: 998 - Rice Research and Promotion

Funding Sources: SRP - AR Rice Research and Promotion Fund

Historical Data

Agency Request and Executive Recommendation

Commitment Item		Historical Data			Agency Request and Executive Recommendation			Agency Request and Executive Recommendation		
		2013-2014 Actual	2014-2015 Budget	2014-2015 Authorized	2015-2016			2016-2017		
					Base Level	Agency	Executive	Base Level	Agency	Executive
Operating Expenses	5020002	8,458	14,200	14,200	14,200	14,200	14,200	14,200	14,200	14,200
Conference & Travel Expenses	5050009	0	0	0	0	0	0	0	0	0
Professional Fees	5060010	0	0	0	0	0	0	0	0	0
Data Processing	5090012	0	0	0	0	0	0	0	0	0
Capital Outlay	5120011	0	0	0	0	0	0	0	0	0
Research/Development	5900031	4,553,480	6,966,496	6,966,496	6,966,496	6,966,496	6,966,496	6,966,496	6,966,496	6,966,496
Total		4,561,938	6,980,696	6,980,696	6,980,696	6,980,696	6,980,696	6,980,696	6,980,696	6,980,696
Funding Sources										
Fund Balance	4000005	541,438	194,328		144,328	144,328	144,328	63,632	63,632	63,632
Special Revenue	4000030	4,214,828	6,930,696		6,900,000	6,900,000	6,900,000	6,900,000	6,900,000	6,900,000
Total Funding		4,756,266	7,125,024		7,044,328	7,044,328	7,044,328	6,963,632	6,963,632	6,963,632
Excess Appropriation/(Funding)		(194,328)	(144,328)		(63,632)	(63,632)	(63,632)	17,064	17,064	17,064
Grand Total		4,561,938	6,980,696		6,980,696	6,980,696	6,980,696	6,980,696	6,980,696	6,980,696

Expenditure of appropriation is contingent upon available funding.