

ARKANSAS GEOLOGICAL COMMISSION

Enabling Laws

Act 1480 of 2003

A.C.A. §15-5-201, et seq.

A.C.A. §15-55-208, et seq.

History and Organization

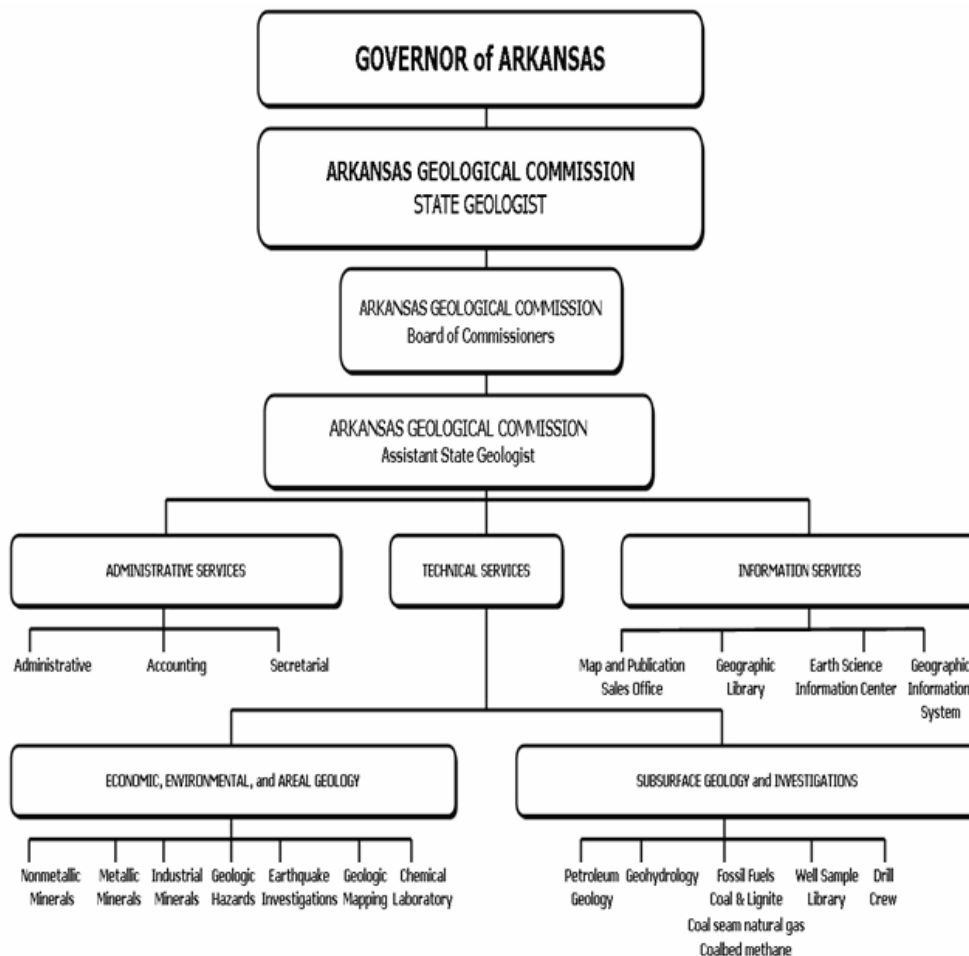
The first geologic surveys made from State-appropriated funds go back to 1857-60. A second survey was made from 1871-74. In 1881, the Geological Survey of Arkansas was established under the direction of Dr. John C. Branner and lasted until 1893. During this period, Herbert Clark Hoover, who later became President of the United States, assisted Dr. Branner. For the next 30 years, the Department of Geology conducted a few geologic surveys at the University of Arkansas. In 1923 the Geological Survey of Arkansas was once again established by Act 573 of 1923 under the direction of George C. Branner, the son of John Branner. In 1945, reorganization changed the agency name to the Arkansas Resources and Development Commission, Division of Geology, under the direction of Harold B. Foxhall. From 1951 to 1995 Norman F. Williams was Director and State Geologist. Another reorganization in 1955 established the agency as the Arkansas Geological and Conservation Commission. In 1995, William V. Bush became Director and State Geologist. In 2003, Mac B. Woodward was appointed Director and State Geologist.

The Arkansas Geological Commission is organized into three sections: Administrative Services, Information Services, and Technical Services, all of which are under the direct supervision of the State Geologist. The primary purpose of the Arkansas Geological Commission is to increase the knowledge of the geology of the State, and to stimulate the orderly development and utilization of the State's mineral, water, and fossil fuel resources, while protecting the environment.

The Administrative Services Section consists of administrative, accounting, and secretarial services, and provides all the administrative support for the agency. The Information Services Section's primary function is the distribution of information prepared and maintained by the Geology Division. This is accomplished through four offices: Map and Publication Sales, Geological Library, Cartographic Office, and Earth Science Information Center (ESIC). The Technical Services Section is composed of the geologic staff and technical support personnel. Its primary responsibilities are: 1) to search for and provide information on the State's mineral, fossil-fuel (oil, natural gas, coal, lignite, coalbed methane and coal seam natural gas), and water resources; 2) to encourage the orderly development of these resources; 3) to maintain current geologic map coverage of the State; and 4) to study and report on the geologic factors affecting the State's environment. It is divided into five major activities: Economic Geology, Mineral Exploration and Lignite Investigation, Subsurface Geology, Environmental and Areal Geology, and the Technical Support Group.

In addition to the major activities in the Technical Services Section, the Agency has several cooperative projects with the USGS. The AGC has three cooperative programs with the Water Resources Division of the USGS: Groundwater Survey Program, Stream Gauging Program (surface

water), and Water Quality Program. Each of these is a 50-50 cooperative program in which the costs are split, but with the majority of the work being done by USGS personnel using their equipment and facilities. These programs provide base-line water data to the public and other users of water data needed in management and protection activities. The selection of sample sites is coordinated with other government agencies that collect water data, in order to eliminate duplication and establish site selection priorities in strategic areas for the public welfare.



Agency Commentary

The Arkansas Geological Commission (AGC) was created by Act 16 of 1963. Agency activities are divided into three major sections: 1) Administrative Services, 2) Technical Services, and 3) Information Services. The activities are primarily supported by General Revenue Funds, except Map and Publication Sales, which operate on a revolving cash fund, the Geology Learning Center, which is funded by donations, and the State Geological Mapping Program (STATEMAP), which operates using federal funds. The Arkansas Geological commission participates in cooperative (matching at 50/50) water programs with the United States Geological Survey.

The Administrative Services Section supports the AGC with administrative, accounting, personnel, and secretarial services. An additional \$5,000 per fiscal year is required to meet expected increases in building maintenance.

The Technical Services Section (Geologic Staff) provides information on geology, mineral resources, and geohydrology of the State to the general public, other government agencies, and industry through the preparation, publication and distribution of geologic maps and reports, personal contacts and public presentations. This activity encourages the orderly development of the State's mineral, fossil fuel (oil natural gas, coal, lignite, coalbed methane and coal seam natural gas), and ground-water resources through geochemical, geophysical and geological studies, and core drilling. An increase in appropriation of \$2,000 in both years of the biennium is needed in Operating Expenses to purchase field equipment for geologists.

Current geologic map coverage of the State is maintained and other geologic studies are conducted as needed. The geologic information compiled and maintained for these investigations is necessary for exploration, development, planning and protection for the mineral resources base of Arkansas and as the framework for numerous environmental studies. A technical support group assists the geologic staff in collecting, evaluating and preparing geologic data. Due to the recent addition of an agency network infrastructure, Arkansas Geological Commission now has the ability to efficiently store data in an electronic format. Due to the vast amount of information archived at the Arkansas Geological Commission, two positions are necessary to transfer and organize data to a useful digital format. A request in salaries and matching is needed to fund two existing positions, a Management Project Analyst I and an Administrative Assistant I. The Management Project Analyst I position will establish a system of databases that avoids duplication, allows interface with current mapping applications and will act as data entry and have oversight on all database projects. The Administrative Assistant I will assist in data entry as well as assisting administration part-time allowing greater separation of duties as required by DF&A Office of Accounting and AASIS Security. An increase in salaries of \$49,017 in FY06 and \$50,486 in FY07 as well as increases in Personal Service Matching of \$17,415 in FY06 and \$17,707 in FY07 is needed to meet this request.

The Information Services Section's primary functions are preparation, storage and distribution of data, reports, and maps prepared and maintained by the AGC. This is accomplished through the Map and Publication Sales Office, Geographic Information System and Cartography Office, Geological Library, Earth Science Information Center, and reception and telephone services. With the increasing demand for maps in digital format, we are, in an orderly fashion, digitizing the geology of Arkansas. We request that funding be restored to the same level as the previous biennium for extra-help to aid in this process. Our request is for \$7,525 per fiscal year in Extra Help and \$659 in associated Matching costs. (Extra-help-usually college students, majoring in geology). As a part of the education aspect of our mission, "rock packs" have been provided to students and teachers for forty years. These are packaged by clients of a sheltered workshop through a contract with Conway Human Services. An additional \$2,000 in Operating Expenses is requested to cover increased costs.

The AGC has three **Cooperative Programs with the U.S. Geological Survey** (USGS) Water Resources Division. These cooperative programs with the U.S. Geological Survey's Water Resources Division include 1) Stream Gauging Program (surface water), 2) Water Quality Program, and 3) Ground Water Survey. These programs provide for collection, evaluation and development of data relating to the State's surface and ground water resources. Information from these programs is important to the development and protection of the State's water supply and is critical to the agencies that regulate and manage the State's water resources. Specifically, these funds are used to collect and analyze surface and ground water samples (Water Quality Program); installation and monitoring

of continuous-record stream gauging stations (Stream Gauging Program); and research in subsurface geology relating to ground water (Ground Water Survey). The Ground Water Survey will include regular water-level measurements of wells in the critical Sparta Aquifer in south Arkansas and the Quaternary Aquifer in east Arkansas. No request above Base Level is requested.

INFORMATION TECHNOLOGY

The following requests are made to enable the agency to continue to provide geologic and natural resource information to the public and other government agencies in an electronic format and participate in the electronic accounting program AASIS. A request of \$4,000 in Operating Expenses for FY07 is for updating and or replacing an agency network (LAN). An increase of \$8,500 per fiscal year in Operating Expenses is needed for operating and line costs of the agency network LAN system. A request in Professional Fees and Services of \$5,000 during FY 07 is needed for maintenance of the LAN and \$7,500 for FY07 is requested for maintenance of the LAN and installation of an upgrade to the server. An increase of \$5,000 per fiscal year is needed in Operating Expenses to continue the scheduled replacement of three computers per year (this allows a minimum of five years life expectancy per computer). All of these requests are part of the technology needs based on the agency Information Technology Plan (IT).

MAP RESALE

The Map Resale appropriation provides for the authorization to operate from a revolving cash fund, using a portion of the money collected from the sale of maps, publications and reproduction charges. There is no request for appropriation beyond Base Level.

STATEMAP - STATE GEOLOGIC MAPPING PROGRAM

The funds for Statemap (State Geologic Mapping Program) are federal funds (USGS) which pay for the salary of one field geologist and an extra help position to conduct geologic field studies and mapping in Arkansas. The program involves the geologic mapping of areas of the state selected by the Commission. This is a cooperative effort between the AGC and the USGS and is part of the National Geologic Mapping effort to standardize the quality of geologic mapping in the United States. This project will aid in the development and management of the mineral resources of the area and greatly expand the knowledge of the geology of the State. Continuation of \$20,000 in FY06 for Operating Expenses established by the authority of a Miscellaneous Federal Grant in FY05 is requested.

MUSEUM EXPENSES (GEOLOGY LEARNING CENTER) - CASH

This appropriation provides for the authorization to spend money donated to the AGC Geology Learning Center (GLC). The GLC is part of the educational arm of the agency with the purpose of giving student and citizens of all ages exposure to rocks, minerals, fossils, and fossil fuels. The GLC has 5 display areas and receives funding and exhibit material from donations. There are no priority requests for this appropriation above Base Level.

Audit Findings

DIVISION OF LEGISLATIVE AUDIT
 AUDIT OF :
 ARKANSAS GEOLOGICAL COMMISSION
 FOR THE YEAR ENDED JUNE 30, 2002

Findings

The Arkansas Administration Statewide Information System (AASIS) fails to provide adequate controls to ensure the reliability of financial data, and therefore, does not adequately safeguard the financial assets of the Agency. Specifically, the security configuration does not provide adequate segregation of duties in an environment with a limited number of personnel, resulting in an excessive number of conflicts regarding the restricted access to financial data and data entry.

Recommendations

The Agency work with the AASIS staff to train additional personnel in order to resolve job conflicts and maximize the segregation of duties

Employment Summary

	Male	Female	Total	%
White Employees	13	7	20	95 %
Black Employees	0	1	1	5 %
Other Racial Minorities	0	0	0	0 %
Total Minorities			1	5%
Total Employees			21	100 %

Publications

A.C.A 25-1-204

Name	Statutory Authorization	Required for		# Of Copies	Reason (s) for Continued Publication and Distribution
		Governor	General Assembly		
None	N/A	N	N	0	N/A

Department Appropriation / Program Summary

Historical Data						Agency Request and Executive Recommendation								
Appropriation / Program	2003-2004		2004-2005		2004-2005		2005-2006				2006-2007			
	Actual	Pos	Budget	Pos	Authorized	Pos	Agency	Pos	Executive	Pos	Agency	Pos	Executive	Pos
166 Geology-State Operations	1,315,812	21	1,361,273	21	1,391,642	23	1,496,713	23	1,496,713	23	1,534,928	23	1,534,928	23
169 Geology Map Resale	37,486	0	100,000	0	100,000	0	100,000	0	100,000	0	100,000	0	100,000	0
210 State Geologic Mapping Program	43,609	1	70,912	1	44,844	1	72,694	1	72,694	1	53,859	1	53,859	1
873 Geology Museum -Treasury	0	0	9,025	0	9,025	0	9,025	0	9,025	0	9,025	0	9,025	0
Total	1,396,907	22	1,541,210	22	1,545,511	24	1,678,432	24	1,678,432	24	1,697,812	24	1,697,812	24

Funding Sources		%		%		%		%		%		%	
Fund Balance 4000005	30,135	2.1	44,533	2.8		34,508	2.0	34,508	2.1	25,483	1.5	25,483	1.5
General Revenue 4000010	1,285,358	89.2	1,315,346	83.5		1,496,713	87.8	1,469,213	87.6	1,534,928	89.5	1,500,928	89.3
Federal Revenue 4000020	43,609	3.0	70,912	4.5		72,694	4.3	72,694	4.3	53,859	3.1	53,859	3.2
Cash Fund 4000045	8	0.0	9,000	0.6		9,000	0.5	9,000	0.5	9,000	0.5	9,000	0.5
Merit Adjustment Fund 4000055	0	0.0	45,927	2.9		0	0.0	0	0.0	0	0.0	0	0.0
Miscellaneous Revolving 4000350	51,876	3.6	90,000	5.7		91,000	5.4	91,000	5.5	92,000	5.4	92,000	5.5
Other 4000370	30,454	2.1	0	0.0		0	0.0	0	0.0	0	0.0	0	0.0
Total Funds	1,441,440	100.0	1,575,718	100.0		1,703,915	100.0	1,676,415	100.0	1,715,270	100.0	1,681,270	100.0
Excess Appropriation/(Funding)	(44,533)		(34,508)			(25,483)		2,017		(17,458)		16,542	
Grand Total	1,396,907		1,541,210			1,678,432		1,678,432		1,697,812		1,697,812	

Excess funding in the Executive Recommendation column for each year is offset due to unfunded appropriation of \$27,500 in FY06 and \$34,000 in FY07.

Analysis of Budget Request

Appropriation / Program: 166 - Geology-State Operations

Funding Sources: HUA-Miscellaneous Agencies Fund

The Arkansas Geological Commission's appropriation for State Operations is funded entirely by General Revenues. In this program, data is accumulated, analyzed, and disseminated to provide knowledge of the geology and hydrogeology of the State to stimulate orderly development and encourage effective management and utilization of the State's mineral, fossil fuel, and water resources in an environmentally responsible manner. Base Level for this appropriation includes graduated salary increases of 3% to 1.5% each year over FY05 salary levels, along with related Personal Services Matching costs for (21) Base Level positions. This includes a \$600 minimum increase for employees earning \$20,000 or below. Included in Personal Services Matching is a \$40 increase in the monthly contribution for State employee's health insurance for a total State match of \$320 per month. The Agency is requesting the following:

An increase of \$5,000 is requested in Operating Expenses for FY06 and FY07 for anticipated repairs to the buildings. An additional request of \$4,000 each year is being requested in Operating Expenses for the replacement of field equipment and educational rock packs.

In accordance with the Commission's Information Technology Plan, as submitted to the Office of Information Technology, Operating Expenses of \$13,500 is requested in FY06 to replace three (3) computers, provide maintenance to the network server and for increased costs of network services. Operating Expenses of \$17,500 in FY07 is requested to replace three (3) additional computers, upgrade the network server, and for increased costs of network services. Professional Fees & Services of \$5,000 in the first year and \$7,500 in the second year of the biennium is requested for maintenance to the server and workstations and additional expenses incurred for upgrading the server in FY07.

Salary and matching of \$66,432 in FY06 and \$68,193 in FY07 is being requested for the restoration of an Administrative Assistant I and Management Project Analyst I. Extra Help and matching of \$8,184 each year is also requested to restore funding to levels of the previous biennium.

The Executive Recommendation provides for the Agency Request for appropriation. Additional General Revenue funding is recommended at \$74,616 in FY06 and \$76,377 in FY07 for the restoration of the two regular positions and extra help appropriation.

Appropriation / Program Summary

Appropriation / Program: 166 Geology-State Operations
Funding Sources: HUA-Miscellaneous Agencies Fund

Commitment Item	Historical Data			Agency Request and Executive Recommendation					
	2003-2004 Actual	2004-2005 Budget	2004-2005 Authorized	2005-2006			2006-2007		
				Base Level	Agency	Executive	Base Level	Agency	Executive
Regular Salaries 5010000	793,405	840,266	854,702	859,935	908,952	908,952	884,925	935,411	935,411
#Positions	21	21	23	21	23	23	21	23	23
Extra Help 5010001	4,678	4,475	12,000	4,475	12,000	12,000	4,475	12,000	12,000
#Extra Help	1	11	20	20	20	20	20	20	20
Personal Services Matching 5010003	202,087	231,165	229,573	251,820	269,894	269,894	256,784	275,150	275,150
Operating Expenses 5020002	120,341	123,756	123,756	123,756	146,256	146,256	123,756	150,256	150,256
Travel-Conference Fees 5050009	3,260	4,000	4,000	4,000	4,000	4,000	4,000	4,000	4,000
Professional Fees and Services 5060010	9,964	0	0	0	5,000	5,000	0	7,500	7,500
Data Processing 5090012	16,963	0	0	0	0	0	0	0	0
Capital Outlay 5120011	44,663	7,000	7,000	0	0	0	0	0	0
Water Quality Program 5900046	26,681	31,855	31,855	31,855	31,855	31,855	31,855	31,855	31,855
Stream Gauging 5900047	28,300	38,300	38,300	38,300	38,300	38,300	38,300	38,300	38,300
Ground Water Survey 5900048	40,456	54,456	54,456	54,456	54,456	54,456	54,456	54,456	54,456
Map & Survey Expenditures 5900049	0	0	10,000	0	0	0	0	0	0
Mineral Explore/Lignite Investig.5900050	25,014	26,000	26,000	26,000	26,000	26,000	26,000	26,000	26,000
Total	1,315,812	1,361,273	1,391,642	1,394,597	1,496,713	1,496,713	1,424,551	1,534,928	1,534,928
Funding Sources									
General Revenue 4000010	1,285,358	1,315,346		1,394,597	1,496,713	1,469,213	1,424,551	1,534,928	1,500,928
Merit Adjustment Fund 4000055	0	45,927		0	0	0	0	0	0
Other 4000370	30,454	0		0	0	0	0	0	0
Total Funding	1,315,812	1,361,273		1,394,597	1,496,713	1,469,213	1,424,551	1,534,928	1,500,928
Excess Appropriation/(Funding)	0	0		0	0	27,500	0	0	34,000
Grand Total	1,315,812	1,361,273		1,394,597	1,496,713	1,496,713	1,424,551	1,534,928	1,534,928

The FY05 Budgeted amount in Personal Services Matching exceeds the authorized amount due to matching rate adjustments during the 2003-05 biennium. A transfer to the Capital Outlay line item in the amount of \$30,454 was made from the Motor Vehicle Acquisition Fund in FY04.

Change Level by Appropriation

Appropriation / Program: 166-Geology-State Operations
Funding Sources: HUA-Miscellaneous Agencies Fund

Agency Request

Change Level		2005-2006	Pos	Cumulative	% of BL	2006-2007	Pos	Cumulative	% of BL
BL	Base Level	1,394,597	21	1,394,597	100.0	1,424,551	21	1,424,551	100.0
C01	Existing Program	83,616	2	1,478,213	106.0	85,377	2	1,509,928	105.9
C08	Technology	18,500	0	1,496,713	107.3	25,000	0	1,534,928	107.7

Executive Recommendation

Change Level		2005-2006	Pos	Cumulative	% of BL	2006-2007	Pos	Cumulative	% of BL
BL	Base Level	1,394,597	21	1,394,597	100.0	1,424,551	21	1,424,551	100.0
C01	Existing Program	83,616	2	1,478,213	106.0	85,377	2	1,509,928	105.9
C08	Technology	18,500	0	1,496,713	107.3	25,000	0	1,534,928	107.7

Justification

C01	Restoration of two (2) currently authorized positions in the amount of \$49,017 in FY06 and \$50,486 in FY07 Regular Salaries and \$17,415 in FY06 and \$17,707 in FY07 for Personal Services Matching. The positions of Administrative Assistant I & Management Project Analyst I are necessary to enter geologic information into databases and to allow greater separation of duties as required by DF&A Office of Accounting. Restoration of funding and appropriation for Extra Help in both years in the amount of \$7,525 and \$659 in Personal Services Matching is requested to assist in the digitization of geologic maps. Operating Expenses in the amount of \$5,000 each year to meet increased cost of building maintenance is requested, as well as \$4,000 each year for field equipment and the increased costs of educational rock packs.
C08	An increase in Operating Expenses for maintenance of the network server and three (3) computers in the amount of \$5,000 is requested in FY06 and an upgrade to the server and three (3) additional computers in the amount of \$9,000 is requested in FY07. An additional request in Operating Expenses in the amount of \$8,500 each year for network services expenses represents the expenses for connectivity, email service, telephone service and other IT related expense. As the agency does not have an IT person on staff, a request in the amount of \$5,000 in FY06 and \$7,500 in FY07 in Professional Fees & Services is needed for planned maintenance, troubleshooting, and service calls for the server and workstations and expenses incurred for upgrading of the server in FY07.

Analysis of Budget Request

Appropriation / Program: 169 - Geology Map Resale

Funding Sources: MWA-Geology Map Resale Revolving Fund

Funding for the Arkansas Geological Commission's Map Resale appropriation is obtained from the sale of geological and topographical maps to the general public. These proceeds are deposited into the Agency's revolving fund, as authorized in A.C.A. § 19-4-1804.

The Agency requests the continuation of this program at Base Level.

The Executive Recommendation provides for the Agency Request.

Appropriation / Program Summary

Appropriation / Program: 169 Geology Map Resale
Funding Sources: MWA-Geology Map Resale Revolving Fund

Commitment Item	Historical Data			Agency Request and Executive Recommendation					
	2003-2004 Actual	2004-2005 Budget	2004-2005 Authorized	2005-2006			2006-2007		
				Base Level	Agency	Executive	Base Level	Agency	Executive
Resale Revolving Fund 5900046	37,486	100,000	100,000	100,000	100,000	100,000	100,000	100,000	100,000
Total	37,486	100,000	100,000	100,000	100,000	100,000	100,000	100,000	100,000
Funding Sources									
Fund Balance 4000005	29,490	43,880		33,880	33,880	33,880	24,880	24,880	24,880
Miscellaneous Revolving 4000350	51,876	90,000		91,000	91,000	91,000	92,000	92,000	92,000
Total Funding	81,366	133,880		124,880	124,880	124,880	116,880	116,880	116,880
Excess Appropriation/(Funding)	(43,880)	(33,880)		(24,880)	(24,880)	(24,880)	(16,880)	(16,880)	(16,880)
Grand Total	37,486	100,000		100,000	100,000	100,000	100,000	100,000	100,000

Analysis of Budget Request

Appropriation / Program: 210 - State Geologic Mapping Program

Funding Sources: FAL-Geology-Federal

The Geological Commission's State Geologic Mapping Program is funded solely by federal revenues. The primary functions for this program are to coordinate collection of data and formulation of maps displaying the location and quantity of minerals in specific areas of the State. Base Level for this appropriation includes graduated salary increases of 3% to 1.5% each year over FY05 salary levels, along with related Personal Services Matching costs for (1) Base Level position. This includes a \$600 minimum increase for employees earning \$20,000 or below. Included in Personal Services Matching is a \$40 increase in the monthly contribution for State employee's health insurance for a total State match of \$320 per month.

The Agency requests the restoration of \$20,000 in FY06 for Operating Expenses established through the transfer of authority from the Miscellaneous Federal Grant Holding Account in FY05.

The Executive Recommendation is the Agency Request.

Appropriation / Program Summary

Appropriation / Program: 210 State Geologic Mapping Program
Funding Sources: FAL-Geology-Federal

Commitment Item	Historical Data			Agency Request and Executive Recommendation					
	2003-2004 Actual	2004-2005 Budget	2004-2005 Authorized	2005-2006			2006-2007		
				Base Level	Agency	Executive	Base Level	Agency	Executive
Regular Salaries 5010000	24,853	31,439	26,746	32,382	32,382	32,382	33,353	33,353	33,353
#Positions	1	1	1	1	1	1	1	1	1
Extra Help 5010001	0	3,715	3,715	3,715	3,715	3,715	3,715	3,715	3,715
#Extra Help	0	2	2	2	2	2	2	2	2
Personal Services Matching 5010003	7,652	9,758	8,383	10,597	10,597	10,597	10,791	10,791	10,791
Operating Expenses 5020002	11,104	26,000	6,000	6,000	26,000	26,000	6,000	6,000	6,000
Travel-Conference Fees 5050009	0	0	0	0	0	0	0	0	0
Professional Fees and Services 5060010	0	0	0	0	0	0	0	0	0
Data Processing 5090012	0	0	0	0	0	0	0	0	0
Capital Outlay 5120011	0	0	0	0	0	0	0	0	0
Total	43,609	70,912	44,844	52,694	72,694	72,694	53,859	53,859	53,859
Funding Sources									
Federal Revenue 4000020	43,609	70,912		52,694	72,694	72,694	53,859	53,859	53,859
Total Funding	43,609	70,912		52,694	72,694	72,694	53,859	53,859	53,859
Excess Appropriation/(Funding)	0	0		0	0	0	0	0	0
Grand Total	43,609	70,912		52,694	72,694	72,694	53,859	53,859	53,859

The FY05 Budgeted amount in Regular Salaries and Personal Services Matching exceeds the authorized amount due to salary and matching rate adjustments during the 2003-05 biennium. Actual expenditure and FY05 Budgeted amounts exceed Authorized Appropriation in Operating Expenses due to a transfer from the Miscellaneous Federal Grant Holding Account.

Change Level by Appropriation

Appropriation / Program: 210-State Geologic Mapping Program

Funding Sources: FAL-Geology-Federal

Agency Request

Change Level		2005-2006	Pos	Cumulative	% of BL	2006-2007	Pos	Cumulative	% of BL
BL	Base Level	52,694	1	52,694	100.0	53,859	1	53,859	100.0
C06	Restored Position	20,000	0	72,694	137.9	0	0	53,859	100.0

Executive Recommendation

Change Level		2005-2006	Pos	Cumulative	% of BL	2006-2007	Pos	Cumulative	% of BL
BL	Base Level	52,694	1	52,694	100.0	53,859	1	53,859	100.0
C06	Restored Position	20,000	0	72,694	137.9	0	0	53,859	100.0

Justification

C06	Appropriation established through the transfer of authority from the Miscellaneous Federal Grant Holding Account in FY05.
-----	---

Analysis of Budget Request

Appropriation / Program: 873 - Geology Museum -Treasury

Funding Sources: NGC-Cash in Treasury

The Geology Museum and Learning Center (GLC) is funded by proceeds of donations collected by the Commission. The GLC is part of the educational arm of the agency with the purpose of giving students and citizens of all ages exposure to rocks, minerals, fossils, and fossil fuels through its five (5) display areas. The Base Level for this program is \$9,025 each year.

The Agency requests the continuation of this program at Base Level.

The Executive Recommendation is the Agency Request. Expenditure of appropriation is contingent upon available funding.

Appropriation / Program Summary

Appropriation / Program: 873 Geology Museum -Treasury
Funding Sources: NGC-Cash in Treasury

Commitment Item	Historical Data			Agency Request and Executive Recommendation					
	2003-2004 Actual	2004-2005 Budget	2004-2005 Authorized	2005-2006			2006-2007		
				Base Level	Agency	Executive	Base Level	Agency	Executive
Museum Expenses 5900046	0	9,025	9,025	9,025	9,025	9,025	9,025	9,025	9,025
Total	0	9,025	9,025	9,025	9,025	9,025	9,025	9,025	9,025
Funding Sources									
Fund Balance 4000005	645	653		628	628	628	603	603	603
Cash Fund 4000045	8	9,000		9,000	9,000	9,000	9,000	9,000	9,000
Total Funding	653	9,653		9,628	9,628	9,628	9,603	9,603	9,603
Excess Appropriation/(Funding)	(653)	(628)		(603)	(603)	(603)	(578)	(578)	(578)
Grand Total	0	9,025		9,025	9,025	9,025	9,025	9,025	9,025