

# DOE - Public School Academic Facilities & Transportation

## Enabling Laws

Act 1237 of 2007  
Act 1031 of 2007  
A.C.A. § 10-3-2201  
A.C.A. § 6-19-101 et seq.  
A.C.A. § 6-20-2501 et seq.  
A.C.A. § 6-20-2601 et seq.  
A.C.A. § 6 21-112 et seq.

## History and Organization

### **STATUTORY AUTHORITY:**

The Division of Public School Academic Facilities and Transportation (Division) was enabled under Act 90 of 2003 which constituted the Division of Public School Academic Facilities and Transportation under the Arkansas Department of Education (ADE). The Division was realigned under Act 1327 of 2005 which realigned the Division during the forming of the Commission for Public School Academic Facilities and Transportation (Commission). The responsibilities of the Division were further defined in Act 1426 and Act 2206, which sets out the programs for which the Division is responsible. The Division activities are detailed in Ark. Code Ann. §§ 6-20-2501 (Arkansas Public School Academic Facilities Funding Act); 6-21-112 (Division of Public School Academic Facilities and Transportation); 6-21-801 (Arkansas Public School Academic Facilities Program Act); 6-19-101 (Transportation).

### **MISSION STATEMENT:**

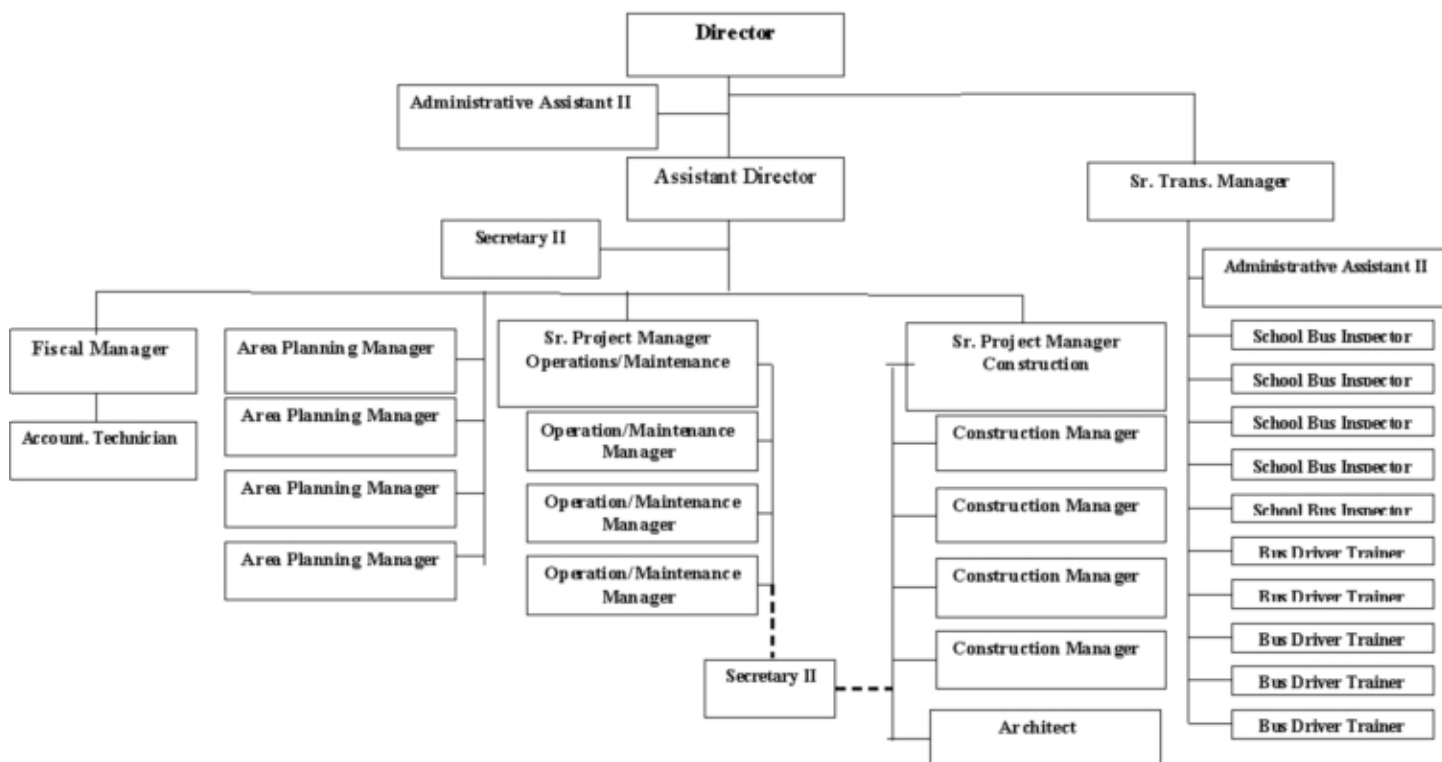
The Division's mission is to direct those activities, under the authorities given to it by law, to assist in ensuring that substantially equal access to adequate educational facilities and educational equipment is provided for all public school students in Arkansas. The Division performs the following functions:

1. Provides information/assistance to Legislative Academic Facilities Oversight Committee;
2. Establishes policies and procedures based on guidance from Academic Facilities Oversight Committee and the General Assembly;
3. Develops and implements the Arkansas Public School Academic Facilities Program Act to include, but is not limited to: development of a statewide Master Plan and legislative reporting requirements; assist school districts in developing school district Master Plans; establish and maintain an Arkansas School Facility Manual school facility standards; establish and maintain an a Public School Facilities Custodial, Maintenance, Repair and Renovation Manual; a Public School Academic Equipment Manual; administration of the Facilities Distress Program; provide onsite inspection to ensure the adherence to Arkansas laws governing school construction and operations; administer and conduct school bus safety inspections and driver training programs;
4. Administers the programs of state financial participation in support of local academic facilities to include, but is not limited to: the bonded debt assistance program; Academic Facilities Immediate Repair Program; Academic Equipment Program; Transitional Academic Facilities Program;

Academic Facilities Partnership Program; Academic Facilities Catastrophic Program; High Growth Loan Program;

5. Develops and implements an ongoing process to track the condition of all public school facilities in the state;
6. Develops a cost index methodology to compare the cost of repairing the condition of school facilities to the replacement of school facilities;
7. Conduct unannounced inspections of public school academic facilities;
8. Enforces, through planning, minimum standards for accessibility to public school academic facilities and programs for individual with disabilities;
9. Develops guidelines for competitive bidding, negotiation and other methods of procurement for public school academic facilities projects;
10. Develops incentive programs to reward school districts for innovative, effective, efficient use of local and state resources with regard to public school academic facilities;
11. Review applicable statutes, rules and regulations for conflicts with or omissions of energy related content;
12. Administers the school transportation program in the various school districts in Arkansas including without limitation, the training of school bus drivers and inspections of school buses;
13. Keeps records showing a description of each school district in the state, maps showing the school districts with current and accurate boundaries, the location of the academic facilities, and the electoral zones into which the school district has been divided;
14. Files reports to the Governor, Legislative committees on the state of condition of academic facilities statewide and the state academic facilities master plan;
15. Maintain a public access website dedicated to academic facilities;
16. Develop and implement a statewide needs priority list.

**DIVISION OF PUBLIC SCHOOL ACADEMIC FACILITIES AND TRANSPORTATION**



**Agency Commentary**

The Division of Public School Academic Facilities and Transportation has the responsibility to assist the 245 Arkansas school districts with general facilities support to include but not limited to construction advice, standards, monitoring funding programs, and assisting in school district transportation programs. To accomplish the construction element of its mission, the Division administers funding programs for new construction, renovation, conversion and projects to ensure that school facilities remaining safe, dry and healthy. These programs include the Transitional Academic Facilities Program, Partnership Program, Academic Equipment Program, Catastrophic Program and High-Growth Program.

The Transitional Academic Facilities Program, for which funds were appropriated in the 2005-2007 biennium, will be completed in June 2009. Sufficient funding is available to meet all commitments for construction projects approved by the Commission under this program.

The Catastrophic Program is being administered with funding generated by cancelled projects in the Partnership Program. It is extremely difficult to forecast financial needs of the Catastrophic Program as the program is only enacted in the event of Catastrophic losses of facilities to school districts. Appropriation in the amount of \$10 million will be requested to sustain this program.

The Division is requesting appropriation in the amount of \$15 million to fund the Academic Equipment Program. This program specified by Act 1426 has yet to begin. It is intended to assist school districts with the acquisition of academic equipment to support the state’s academic programs.

The Division is requesting appropriation of \$10 million to fund the Academic facilities high-growth program. This program would be used to supplement construction in school districts meeting the definition of high-growth whose projects have been approved under the partnership program.

**Publications**

**A.C.A. 25-1-204**

| Name                                                | Statutory Authorization           | Required for |                  | # of Copies | Reason(s) for Continued Publication and Distribution |
|-----------------------------------------------------|-----------------------------------|--------------|------------------|-------------|------------------------------------------------------|
|                                                     |                                   | Governor     | General Assembly |             |                                                      |
| State Academic Facilities Master Plan               | Act 1327 of 2005 Section 1(f)(14) | Y            | Y                | 4           | Statutory                                            |
| Statewide State of Condition of Academic Facilities | Act 1327 of 2005 Section 1(f)(13) | Y            | Y                | 4           | Statutory                                            |

## Department Appropriation Summary

### Historical Data

### Agency Request and Executive Recommendation

| Appropriation                         | 2007-2008          |           | 2008-2009          |           | 2008-2009         |           | 2009-2010          |           |                    |           |                    | 2010-2011 |                   |           |                   |           |                   |           |
|---------------------------------------|--------------------|-----------|--------------------|-----------|-------------------|-----------|--------------------|-----------|--------------------|-----------|--------------------|-----------|-------------------|-----------|-------------------|-----------|-------------------|-----------|
|                                       | Actual             | Pos       | Budget             | Pos       | Authorized        | Pos       | Base Level         | Pos       | Agency             | Pos       | Executive          | Pos       | Base Level        | Pos       | Agency            | Pos       | Executive         | Pos       |
| 2WB Public School Academic Facilities | 2,073,346          | 30        | 2,445,193          | 33        | 2,445,193         | 33        | 2,546,361          | 33        | 2,585,978          | 33        | 2,585,978          | 33        | 2,580,595         | 33        | 2,620,212         | 33        | 2,620,212         | 33        |
| 2WC Immediate Repair                  | 1,866,847          | 0         | 0                  | 0         | 0                 | 0         | 0                  | 0         | 0                  | 0         | 0                  | 0         | 0                 | 0         | 0                 | 0         | 0                 | 0         |
| 2ZN Transitional Academic Facilities  | 12,532,629         | 0         | 3,641,105          | 0         | 0                 | 0         | 0                  | 0         | 0                  | 0         | 0                  | 0         | 0                 | 0         | 0                 | 0         | 0                 | 0         |
| 2ZP Academic Facilities Partnership   | 90,460,859         | 0         | 470,073,567        | 0         | 75,000,000        | 0         | 470,073,567        | 0         | 470,073,567        | 0         | 470,073,567        | 0         | 75,000,000        | 0         | 75,000,000        | 0         | 75,000,000        | 0         |
| 4HQ Academic Facilities Catastrophic  | 135,326            | 0         | 5,364,674          | 0         | 0                 | 0         | 5,364,674          | 0         | 15,364,674         | 0         | 15,364,674         | 0         | 0                 | 0         | 0                 | 0         | 0                 | 0         |
| 4HR Academic Facilities ECP           | 0                  | 0         | 0                  | 0         | 0                 | 0         | 0                  | 0         | 0                  | 0         | 0                  | 0         | 0                 | 0         | 0                 | 0         | 0                 | 0         |
| 4KT Academic Equipment                | 0                  | 0         | 0                  | 0         | 0                 | 0         | 0                  | 0         | 15,000,000         | 0         | 15,000,000         | 0         | 0                 | 0         | 0                 | 0         | 0                 | 0         |
| 54Y Academic Facilities High Growth   | 0                  | 0         | 0                  | 0         | 0                 | 0         | 0                  | 0         | 10,000,000         | 0         | 10,000,000         | 0         | 0                 | 0         | 0                 | 0         | 0                 | 0         |
| <b>Total</b>                          | <b>107,069,007</b> | <b>30</b> | <b>481,524,539</b> | <b>33</b> | <b>77,445,193</b> | <b>33</b> | <b>477,984,602</b> | <b>33</b> | <b>513,024,219</b> | <b>33</b> | <b>513,024,219</b> | <b>33</b> | <b>77,580,595</b> | <b>33</b> | <b>77,620,212</b> | <b>33</b> | <b>77,620,212</b> | <b>33</b> |

| Funding Sources                |         | %                  |              | %                  |              | %                  |              | %                  |              | %                  |              | %                 |              | %                 |              | %                 |              | %                 |              |
|--------------------------------|---------|--------------------|--------------|--------------------|--------------|--------------------|--------------|--------------------|--------------|--------------------|--------------|-------------------|--------------|-------------------|--------------|-------------------|--------------|-------------------|--------------|
| Fund Balance                   | 4000005 | 48,840,140         | 8.9          | 444,079,346        | 92.2         | 0                  | 0.0          | 0                  | 0.0          | 0                  | 0.0          | 0                 | 0.0          | 0                 | 0.0          | 0                 | 0.0          | 0                 | 0.0          |
| Ed Fac Ptnrshp Fund Trnsfr     | 4000057 | 0                  | 0.0          | 0                  | 0.0          | 0                  | 0.0          | 0                  | 0.0          | 0                  | 0.0          | 0                 | 0.0          | 0                 | 0.0          | 0                 | 0.0          | 0                 | 0.0          |
| Div of Acad Fac & Trnsp Fund   | 4000193 | 2,076,288          | 0.4          | 2,445,193          | 0.5          | 2,546,361          | 6.8          | 2,585,978          | 6.9          | 2,546,361          | 6.8          | 2,580,595         | 6.9          | 2,620,212         | 7.0          | 2,580,595         | 6.9          | 2,580,595         | 6.9          |
| Educ Fac Partnership Fund      | 4000217 | 35,000,000         | 6.4          | 35,000,000         | 7.3          | 35,000,000         | 93.2         | 35,000,000         | 93.1         | 35,000,000         | 93.2         | 35,000,000        | 93.1         | 35,000,000        | 93.0         | 35,000,000        | 93.1         | 35,000,000        | 93.1         |
| Trnfr frm DOE Pub School Fund  | 4000525 | 9,634,873          | 1.7          | 0                  | 0.0          | 0                  | 0.0          | 0                  | 0.0          | 0                  | 0.0          | 0                 | 0.0          | 0                 | 0.0          | 0                 | 0.0          | 0                 | 0.0          |
| Transfer from General Imprv    | 4000540 | 455,597,052        | 82.7         | 0                  | 0.0          | 0                  | 0.0          | 0                  | 0.0          | 0                  | 0.0          | 0                 | 0.0          | 0                 | 0.0          | 0                 | 0.0          | 0                 | 0.0          |
| <b>Total Funds</b>             |         | <b>551,148,353</b> | <b>100.0</b> | <b>481,524,539</b> | <b>100.0</b> | <b>37,546,361</b>  | <b>100.0</b> | <b>37,585,978</b>  | <b>100.0</b> | <b>37,546,361</b>  | <b>100.0</b> | <b>37,580,595</b> | <b>100.0</b> | <b>37,620,212</b> | <b>100.0</b> | <b>37,580,595</b> | <b>100.0</b> | <b>37,580,595</b> | <b>100.0</b> |
| Excess Appropriation/(Funding) |         | (444,079,346)      |              | 0                  |              | 440,438,241        |              | 475,438,241        |              | 475,477,858        |              | 40,000,000        |              | 40,000,000        |              | 40,039,617        |              | 40,039,617        |              |
| <b>Grand Total</b>             |         | <b>107,069,007</b> |              | <b>481,524,539</b> |              | <b>477,984,602</b> |              | <b>513,024,219</b> |              | <b>513,024,219</b> |              | <b>77,580,595</b> |              | <b>77,620,212</b> |              | <b>77,620,212</b> |              | <b>77,620,212</b> |              |

Budget amount exceeds authorized (Fund Centers 2ZN, 2ZP and 4HQ) due to special language in current appropriations act that allows for carry forward of unused appropriation. Actual expenditures and cash flow will result in carry forward of fund balance to address projects in FY10 and FY11.

**Agency Position Usage Report - Public School Academic Facilities & Transportation**

| FY2006 - 2007     |          |          |       |            |                        | FY2007 - 2008     |          |          |       |            |                        | FY2008 - 2009     |          |          |       |            |                        |
|-------------------|----------|----------|-------|------------|------------------------|-------------------|----------|----------|-------|------------|------------------------|-------------------|----------|----------|-------|------------|------------------------|
| Authorized in Act | Budgeted |          |       | Unbudgeted | % of Authorized Unused | Authorized in Act | Budgeted |          |       | Unbudgeted | % of Authorized Unused | Authorized in Act | Budgeted |          |       | Unbudgeted | % of Authorized Unused |
|                   | Filled   | Unfilled | Total | Total      |                        |                   | Filled   | Unfilled | Total | Total      |                        |                   | Filled   | Unfilled | Total | Total      |                        |
| 26                | 23       | 2        | 25    | 1          | 11.54 %                | 33                | 29       | 4        | 33    | 0          | 12.12 %                | 33                | 28       | 5        | 33    | 0          | 15.15 %                |

## **Analysis of Budget Request**

**Appropriation:** 2WB - Public School Academic Facilities

**Funding Sources:** EFT - Division of Academic Facilities and Transportation Fund

This appropriation provides resources for the operation of the Division of Public School Academic Facilities and Equipment. Act 1327 of 2005 revised the powers and duties of the Division of Public School Academic Facilities and Transportation to include developing and implementing the Arkansas Public School Academic Facilities Partnership Program and overseeing school transportation programs. The Commission for Public School Academic Facilities and Transportation is charged with overseeing the division during the implementation and operation of the Arkansas Public School Academic Facilities Program.

Base Level salaries for classified positions reflect the recommendations of the Pay Plan Study as well as the recommendation for two positions transitioning from unclassified to classified positions. A 2.3% Cost of Living Allowance is reflected in the second year of the biennium. The Base Level request for Regular Salaries may include Career Services payments for eligible employees. Personal Services Matching includes a \$75 increase in monthly contribution for State employee's health insurance for a total State match per budgeted employee of \$425.

Agency Requests includes:

- 1) An increase in the Operating Expenses line item of \$39,617 for both fiscal years of the 2009-2011 Biennium. This increase is for anticipated increases in rent, utilities and additional field work of the Division.
- 2) Reallocating \$2,500 each fiscal year of currently authorized appropriation from the Data Processing Services line item to the Operating Expenses line item. This request is to properly classify the expenditures for data base support.

The Executive Recommendation provides for appropriation only of \$39,617 and the reallocation of appropriation from Data Processing Services line item to Operating Expenses line item in each fiscal year of the 2009-2011 Biennium.

## Appropriation Summary

**Appropriation:** 2WB - Public School Academic Facilities  
**Funding Sources:** EFT - Division of Academic Facilities and Transportation Fund

### Historical Data

### Agency Request and Executive Recommendation

| Commitment Item                      | Historical Data     |                     |                         | Agency Request and Executive Recommendation |                  |                  | Agency Request and Executive Recommendation |                  |                  |
|--------------------------------------|---------------------|---------------------|-------------------------|---------------------------------------------|------------------|------------------|---------------------------------------------|------------------|------------------|
|                                      | 2007-2008<br>Actual | 2008-2009<br>Budget | 2008-2009<br>Authorized | 2009-2010                                   |                  |                  | 2010-2011                                   |                  |                  |
|                                      |                     |                     |                         | Base Level                                  | Agency           | Executive        | Base Level                                  | Agency           | Executive        |
| Regular Salaries 5010000             | 1,174,314           | 1,403,520           | 1,402,785               | 1,461,717                                   | 1,461,717        | 1,461,717        | 1,489,709                                   | 1,489,709        | 1,489,709        |
| <b>#Positions</b>                    | <b>30</b>           | <b>33</b>           | <b>33</b>               | <b>33</b>                                   | <b>33</b>        | <b>33</b>        | <b>33</b>                                   | <b>33</b>        | <b>33</b>        |
| Extra Help 5010001                   | 0                   | 2,500               | 2,500                   | 2,500                                       | 2,500            | 2,500            | 2,500                                       | 2,500            | 2,500            |
| <b>#Extra Help</b>                   | <b>0</b>            | <b>5</b>            | <b>5</b>                | <b>5</b>                                    | <b>5</b>         | <b>5</b>         | <b>5</b>                                    | <b>5</b>         | <b>5</b>         |
| Personal Services Matching 5010003   | 391,943             | 441,996             | 442,731                 | 484,967                                     | 484,967          | 484,967          | 491,209                                     | 491,209          | 491,209          |
| Operating Expenses 5020002           | 248,250             | 295,054             | 295,054                 | 295,054                                     | 337,171          | 337,171          | 295,054                                     | 337,171          | 337,171          |
| Conference & Travel Expenses 5050009 | 5,854               | 28,650              | 28,650                  | 28,650                                      | 28,650           | 28,650           | 28,650                                      | 28,650           | 28,650           |
| Professional Fees 5060010            | 0                   | 20,973              | 20,973                  | 20,973                                      | 20,973           | 20,973           | 20,973                                      | 20,973           | 20,973           |
| Data Processing 5090012              | 0                   | 2,500               | 2,500                   | 2,500                                       | 0                | 0                | 2,500                                       | 0                | 0                |
| Capital Outlay 5120011               | 3,626               | 0                   | 0                       | 0                                           | 0                | 0                | 0                                           | 0                | 0                |
| Safety Training 5900046              | 249,359             | 250,000             | 250,000                 | 250,000                                     | 250,000          | 250,000          | 250,000                                     | 250,000          | 250,000          |
| <b>Total</b>                         | <b>2,073,346</b>    | <b>2,445,193</b>    | <b>2,445,193</b>        | <b>2,546,361</b>                            | <b>2,585,978</b> | <b>2,585,978</b> | <b>2,580,595</b>                            | <b>2,620,212</b> | <b>2,620,212</b> |
| <b>Funding Sources</b>               |                     |                     |                         |                                             |                  |                  |                                             |                  |                  |
| Fund Balance 4000005                 | 897,058             | 0                   |                         | 0                                           | 0                | 0                | 0                                           | 0                | 0                |
| Ed Fac Prtnrshp Fund Trnsfr 4000057  | (900,000)           | 0                   |                         | 0                                           | 0                | 0                | 0                                           | 0                | 0                |
| Div of Acad Fac & Trnsp Fund 4000193 | 2,076,288           | 2,445,193           |                         | 2,546,361                                   | 2,585,978        | 2,546,361        | 2,580,595                                   | 2,620,212        | 2,580,595        |
| <b>Total Funding</b>                 | <b>2,073,346</b>    | <b>2,445,193</b>    |                         | <b>2,546,361</b>                            | <b>2,585,978</b> | <b>2,546,361</b> | <b>2,580,595</b>                            | <b>2,620,212</b> | <b>2,580,595</b> |
| Excess Appropriation/(Funding)       | 0                   | 0                   |                         | 0                                           | 0                | 39,617           | 0                                           | 0                | 39,617           |
| <b>Grand Total</b>                   | <b>2,073,346</b>    | <b>2,445,193</b>    |                         | <b>2,546,361</b>                            | <b>2,585,978</b> | <b>2,585,978</b> | <b>2,580,595</b>                            | <b>2,620,212</b> | <b>2,620,212</b> |

Actual Expenditures for FY08 exceed Authorized Amount in Capital Outlay due to special language which provides Appropriation Transfer authority.  
 The FY09 Budgeted amount in Regular Salaries exceeds the authorized amount due to salary adjustments during the 2007-2009 Biennium.



## Change Level by Appropriation

**Appropriation:** 2WB - Public School Academic Facilities

**Funding Sources:** EFT - Division of Academic Facilities and Transportation Fund

### Agency Request

| Change Level |                   | 2009-2010        | Pos       | Cumulative       | % of BL      | 2010-2011        | Pos       | Cumulative       | % of BL      |
|--------------|-------------------|------------------|-----------|------------------|--------------|------------------|-----------|------------------|--------------|
| <b>BL</b>    | <b>Base Level</b> | <b>2,546,361</b> | <b>33</b> | <b>2,546,361</b> | <b>100.0</b> | <b>2,580,595</b> | <b>33</b> | <b>2,580,595</b> | <b>100.0</b> |
| C01          | Existing Program  | 39,617           | 0         | 2,585,978        | 101.6        | 39,617           | 0         | 2,620,212        | 101.5        |
| C04          | Reallocation      | 0                | 0         | 2,585,978        | 101.6        | 0                | 0         | 2,620,212        | 101.5        |

### Executive Recommendation

| Change Level |                   | 2009-2010        | Pos       | Cumulative       | % of BL      | 2010-2011        | Pos       | Cumulative       | % of BL      |
|--------------|-------------------|------------------|-----------|------------------|--------------|------------------|-----------|------------------|--------------|
| <b>BL</b>    | <b>Base Level</b> | <b>2,546,361</b> | <b>33</b> | <b>2,546,361</b> | <b>100.0</b> | <b>2,580,595</b> | <b>33</b> | <b>2,580,595</b> | <b>100.0</b> |
| C01          | Existing Program  | 39,617           | 0         | 2,585,978        | 101.6        | 39,617           | 0         | 2,620,212        | 101.5        |
| C04          | Reallocation      | 0                | 0         | 2,585,978        | 101.6        | 0                | 0         | 2,620,212        | 101.5        |

### Justification

|     |                                                                                                                                                                                                                                                                                                                                                                                                                                             |
|-----|---------------------------------------------------------------------------------------------------------------------------------------------------------------------------------------------------------------------------------------------------------------------------------------------------------------------------------------------------------------------------------------------------------------------------------------------|
| C01 | The Division of Public School Academic Facilities and Transportation seeks a slight increase in its operational budget over the base level by \$39,617 or 1.5%. This increase is based on anticipated increase in facilities rent and utilities. Additionally, this request takes into consideration expenses for additional field work to allow the Division to meet its operation mission of school district inspections required by law. |
| C04 | This request is to reallocate \$2,500 of currently authorized appropriation from Data Processing Services to Operating Expense. The Department of Information Systems expenditures are for database support and should be expensed from Operating Expense rather than Data Processing.                                                                                                                                                      |

## **Analysis of Budget Request**

**Appropriation:** EFP - Programs of the Public School Academic Facilities & Transportation

**Funding Sources:** EFP - Educational Facilities Partnership Fund

This appropriation provides resources for The Arkansas Public School Academic Facilities Funding Act, which established the programs for the state financial participation in local projects relating to academic facilities and equipment and assisting school districts with transportation programs. The programs are the Academic Facilities Immediate Repair Program, the Transitional Academic Facilities Program, the Academic Facilities Partnership Program, the Academic Equipment Program, Academic Facilities Catastrophic Program and the Academic Facilities Extraordinary Circumstances Program.

The Immediate Repair Program was completed during FY08 and the Transitional Program is on schedule to be complete in FY09.

State participation under any program will be based on an academic facilities wealth index. The Division of Public School Academic Facilities and Transportation establishes the formulas used for determining basic project costs on a per student basis.

The funding sources for these programs comes from Fund Balance, General Revenue and through A.C.A. § 6-20-2503, which authorizes the transfer of savings in the Public School Fund for Debt Service Funding, General Facilities Funding and Supplemental Millage Incentive line item appropriations to the Partnership Fund.

The fund balance amount in FY09 is due to a transfer in Act 1031 of 2007 that authorized the transfer of \$455,597,052 from the General Improvement Fund.

The Agency Change Level Request is for a total of \$35,000,000 of unfunded appropriation in FY10. The requested appropriation is for:

- The Academic Equipment program of \$15,000,000. This request is intended to assist school districts with the acquisition of academic equipment to support the state's academic programs.
- A request in Academic Facilities Catastrophic program of \$10,000,000, the program is only enacted in the event of catastrophic losses of facilities to school districts.
- Also, a new program for the 2009-2011 Biennium, Academic Facilities High Growth in the amount of \$10,000,000 is requested for school districts meeting the definition of high-growth whose projects have been approved under the partnership program.

The Executive Recommendation provides for Agency Request.

## Appropriation Summary

**Appropriation:** EFP - Programs of the Public School Academic Facilities & Transportation

**Funding Sources:** EFP - Educational Facilities Partnership Fund

### Historical Data

### Agency Request and Executive Recommendation

| Commitment Item                  |         | Historical Data     |                     |                         | Agency Request and Executive Recommendation |                     |                        | 2010-2011               |                     |                        |
|----------------------------------|---------|---------------------|---------------------|-------------------------|---------------------------------------------|---------------------|------------------------|-------------------------|---------------------|------------------------|
|                                  |         | 2007-2008<br>Actual | 2008-2009<br>Budget | 2008-2009<br>Authorized | 2009-2010<br>Base Level                     | 2009-2010<br>Agency | 2009-2010<br>Executive | 2010-2011<br>Base Level | 2010-2011<br>Agency | 2010-2011<br>Executive |
| Academic Facilities Partnership  | 5100004 | 90,460,859          | 470,073,567         | 75,000,000              | 470,073,567                                 | 470,073,567         | 470,073,567            | 75,000,000              | 75,000,000          | 75,000,000             |
| Academic Facilities ECP          | 5100004 | 0                   | 0                   | 0                       | 0                                           | 0                   | 0                      | 0                       | 0                   | 0                      |
| Immediate Repair                 | 5900046 | 1,866,847           | 0                   | 0                       | 0                                           | 0                   | 0                      | 0                       | 0                   | 0                      |
| Transitional Academic Facilities | 5900046 | 12,532,629          | 3,641,105           | 0                       | 0                                           | 0                   | 0                      | 0                       | 0                   | 0                      |
| Academic Facilities High Growth  | 5900046 | 0                   | 0                   | 0                       | 0                                           | 10,000,000          | 10,000,000             | 0                       | 0                   | 0                      |
| Academic Equipment               | 5900046 | 0                   | 0                   | 0                       | 0                                           | 15,000,000          | 15,000,000             | 0                       | 0                   | 0                      |
| Academic Facilities Catastrophic | 5900046 | 135,326             | 5,364,674           | 0                       | 5,364,674                                   | 15,364,674          | 15,364,674             | 0                       | 0                   | 0                      |
| <b>Total</b>                     |         | <b>104,995,661</b>  | <b>479,079,346</b>  | <b>75,000,000</b>       | <b>475,438,241</b>                          | <b>510,438,241</b>  | <b>510,438,241</b>     | <b>75,000,000</b>       | <b>75,000,000</b>   | <b>75,000,000</b>      |

| Funding Sources                |         |                    |                    |  |                    |                    |                    |                   |                   |                   |
|--------------------------------|---------|--------------------|--------------------|--|--------------------|--------------------|--------------------|-------------------|-------------------|-------------------|
| Fund Balance                   | 4000005 | 47,943,082         | 444,079,346        |  | 0                  | 0                  | 0                  | 0                 | 0                 | 0                 |
| Ed Fac Prtnrshp Fund Trnsfr    | 4000057 | 900,000            | 0                  |  | 0                  | 0                  | 0                  | 0                 | 0                 | 0                 |
| Educ Fac Partnership Fund      | 4000217 | 35,000,000         | 35,000,000         |  | 35,000,000         | 35,000,000         | 35,000,000         | 35,000,000        | 35,000,000        | 35,000,000        |
| Trnfr frm DOE Pub School Fund  | 4000525 | 9,634,873          | 0                  |  | 0                  | 0                  | 0                  | 0                 | 0                 | 0                 |
| Transfer from General Imprv    | 4000540 | 455,597,052        | 0                  |  | 0                  | 0                  | 0                  | 0                 | 0                 | 0                 |
| <b>Total Funding</b>           |         | <b>549,075,007</b> | <b>479,079,346</b> |  | <b>35,000,000</b>  | <b>35,000,000</b>  | <b>35,000,000</b>  | <b>35,000,000</b> | <b>35,000,000</b> | <b>35,000,000</b> |
| Excess Appropriation/(Funding) |         | (444,079,346)      | 0                  |  | 440,438,241        | 475,438,241        | 475,438,241        | 40,000,000        | 40,000,000        | 40,000,000        |
| <b>Grand Total</b>             |         | <b>104,995,661</b> | <b>479,079,346</b> |  | <b>475,438,241</b> | <b>510,438,241</b> | <b>510,438,241</b> | <b>75,000,000</b> | <b>75,000,000</b> | <b>75,000,000</b> |

Budget amount exceeds authorized due to special language in current appropriations act that allows for carry forward of unused appropriation.

**CARRY FORWARD OF ANY UNEXPENDED BALANCE OF APPROPRIATION AND/OR FUNDING FROM FISCAL YEAR 2008 TO FISCAL YEAR 2009**

Agency: Education Department-Public School Academic Facilities & Transportation

Program: Immediate Repair

Act #: 1237 of 2007 Section(s) #: 4 & 6

Estimated Carry Forward Amount \$ 0.00      Appropriation       Funds

Funding Source: Educ Facilities Partnership

**Accounting Information:**

Business Area: 0500      Funds Center: 2WC      Fund: EFP      Functional Area: EDUC

| Line Item | Commitment Item | Estimated Carry Forward Amount | Actual Carry Forward Amount |
|-----------|-----------------|--------------------------------|-----------------------------|
|           |                 |                                |                             |
| Total     |                 | \$ 0.00                        | \$ 0.00                     |

Current law requires a written statement be submitted to the DFA Office of Budget stating the reason(s) to carry forward appropriation and/or funding for a program or a specific line item within a program from the first fiscal year of the biennium to the second fiscal year of the biennium.

**Justification for carry forward of unexpended balance of appropriation and/or funding:**

No carry forward is expected in this Funds Center.

**Actual Funding Carry Forward Amount** \$ 0.00

**Current status of carry forward appropriation/funding:**

All the appropriation was exhausted in FY2008. There is no carry forward of appropriation in FY2009.

Dr. Ken James  
Commissioner of Education

08-14-2008  
Date

**CARRY FORWARD OF ANY UNEXPENDED BALANCE OF APPROPRIATION AND/OR FUNDING FROM FISCAL YEAR 2008 TO FISCAL YEAR 2009**

Agency: Education Department-Public School Academic Facilities & Transportation

Program: Transitional Academic Facilities

Act #: 1237 of 2007 Section(s) #: 4 & 6

Estimated Carry Forward Amount \$ 16,616,196.00      Appropriation       Funds

Funding Source: Educ Facilities Partnership

**Accounting Information:**

Business Area: 0500      Funds Center: 2ZN      Fund: EFP      Functional Area: EDUC

| Line Item                        | Commitment Item | Estimated Carry Forward Amount | Actual Carry Forward Amount |
|----------------------------------|-----------------|--------------------------------|-----------------------------|
| Transitional Academic Facilities | 5900046         | 16,616,196.00                  | 18,079,201.64               |
| <b>Total</b>                     |                 | <b>\$ 16,616,196.00</b>        | <b>\$ 18,079,201.64</b>     |

Current law requires a written statement be submitted to the DFA Office of Budget stating the reason(s) to carry forward appropriation and/or funding for a program or a specific line item within a program from the first fiscal year of the biennium to the second fiscal year of the biennium.

**Justification for carry forward of unexpended balance of appropriation and/or funding:**

This appropriation will be used for expenditures for the completion of approved Transitional Academic Facilities projects in the public schools.

**Actual Funding Carry Forward Amount**      \$ 0.00

**Current status of carry forward appropriation/funding:**

The carry forward balance will enable the Division of Public School Academic Facilities to complete the approved projects in the Transitional Program during FY2009.

Dr. Ken James  
Commissioner of Education

08-21-2008  
Date

**CARRY FORWARD OF ANY UNEXPENDED BALANCE OF APPROPRIATION AND/OR FUNDING FROM FISCAL YEAR 2008 TO FISCAL YEAR 2009**

Agency: Education Department-Public School Academic Facilities & Transportation

Program: Academic Facilities Partnership

Act #: 1237 of 2007 Section(s) #: 4 & 6

Estimated Carry Forward Amount \$ 583,085,998.00 Appropriation  Funds

Funding Source: Educ Facilities Partnership

**Accounting Information:**

Business Area: 0500 Funds Center: 2ZP Fund: EFP Functional Area: EDUC

| Line Item      | Commitment Item | Estimated Carry Forward Amount | Actual Carry Forward Amount |
|----------------|-----------------|--------------------------------|-----------------------------|
| Grants and Aid | 5100004         | 583,085,998.00                 | 581,597,773.64              |
| Total          |                 | \$ 583,085,998.00              | \$ 581,597,773.64           |

Current law requires a written statement be submitted to the DFA Office of Budget stating the reason(s) to carry forward appropriation and/or funding for a program or a specific line item within a program from the first fiscal year of the biennium to the second fiscal year of the biennium.

**Justification for carry forward of unexpended balance of appropriation and/or funding:**

This appropriation will be used for continuing the completion of approved Academic Facilities Partnership projects in the public schools.

**Actual Funding Carry Forward Amount** \$ 0.00

**Current status of carry forward appropriation/funding:**

Of the actual carry forward amount, \$470,073,556 is budgeted for approved Partnership Program projects.

Dr. Ken James  
Commissioner of Education

08-21-2008  
Date

## Change Level by Appropriation

**Appropriation:** 4HQ - Academic Facilities Catastrophic  
**Funding Sources:** EFP - Educational Facilities Partnership Fund

### Agency Request

| Change Level |                   | 2009-2010        | Pos      | Cumulative       | % of BL      | 2010-2011 | Pos      | Cumulative | % of BL    |
|--------------|-------------------|------------------|----------|------------------|--------------|-----------|----------|------------|------------|
| <b>BL</b>    | <b>Base Level</b> | <b>5,364,674</b> | <b>0</b> | <b>5,364,674</b> | <b>100.0</b> | <b>0</b>  | <b>0</b> | <b>0</b>   | <b>0.0</b> |
| C01          | Existing Program  | 10,000,000       | 0        | 15,364,674       | 286.4        | 0         | 0        | 0          |            |

### Executive Recommendation

| Change Level |                   | 2009-2010        | Pos      | Cumulative       | % of BL      | 2010-2011 | Pos      | Cumulative | % of BL    |
|--------------|-------------------|------------------|----------|------------------|--------------|-----------|----------|------------|------------|
| <b>BL</b>    | <b>Base Level</b> | <b>5,364,674</b> | <b>0</b> | <b>5,364,674</b> | <b>100.0</b> | <b>0</b>  | <b>0</b> | <b>0</b>   | <b>0.0</b> |
| C01          | Existing Program  | 10,000,000       | 0        | 15,364,674       | 286.4        | 0         | 0        | 0          |            |

### Justification

|     |                                                                                                                                                                                                                                                                                                                                                                                                                                                                                                                                                         |
|-----|---------------------------------------------------------------------------------------------------------------------------------------------------------------------------------------------------------------------------------------------------------------------------------------------------------------------------------------------------------------------------------------------------------------------------------------------------------------------------------------------------------------------------------------------------------|
| C01 | The Catastrophic Program is being administered with funding generated by cancelled projects in the Partnership Program. It is extremely difficult to forecast financial needs of the Catastrophic Program as the program is only enacted in the event of Catastrophic losses of facilities to school districts. Funds in the amount of \$10 million will be requested to sustain this program but should these funds not be needed to assist in catastrophic losses the moneys would be moved into the Partnership Program to sustain new construction. |
|-----|---------------------------------------------------------------------------------------------------------------------------------------------------------------------------------------------------------------------------------------------------------------------------------------------------------------------------------------------------------------------------------------------------------------------------------------------------------------------------------------------------------------------------------------------------------|

**CARRY FORWARD OF ANY UNEXPENDED BALANCE OF APPROPRIATION AND/OR FUNDING FROM FISCAL YEAR 2008 TO FISCAL YEAR 2009**

Agency: Education Department-Public School Academic Facilities & Transportation

Program: Academic Facilities Catastrophic

Act #: 1237 of 2007 Section(s) #: 4 & 6

Estimated Carry Forward Amount \$ 10,000,000.00      Appropriation       Funds

Funding Source: Educ Facilities Partnership

**Accounting Information:**

Business Area: 0500      Funds Center: 4HQ      Fund: EFP      Functional Area: EDUC

| Line Item                        | Commitment Item | Estimated Carry Forward Amount | Actual Carry Forward Amount |
|----------------------------------|-----------------|--------------------------------|-----------------------------|
| Academic Facilities Catastrophic | 5900046         | 10,000,000.00                  | 9,864,674.00                |
| Total                            |                 | \$ 10,000,000.00               | \$ 9,864,674.00             |

Current law requires a written statement be submitted to the DFA Office of Budget stating the reason(s) to carry forward appropriation and/or funding for a program or a specific line item within a program from the first fiscal year of the biennium to the second fiscal year of the biennium.

**Justification for carry forward of unexpended balance of appropriation and/or funding:**

Of the total appropriated amount, \$5.5 million has been budgeted for Catastrophic projects in the public schools and will be progressing toward completion in the 2009 fiscal year. The remaining \$4.4 million of carry forward appropriation is unfunded at this time.

**Actual Funding Carry Forward Amount**      \$ 0.00

**Current status of carry forward appropriation/funding:**

Of the actual amount carried forward, only \$5.3 million has been budgeted. The additional \$4.5 million remains unfunded at this time.

Dr. Ken James  
Commissioner of Education

08-15-2008  
Date



**CARRY FORWARD OF ANY UNEXPENDED BALANCE OF APPROPRIATION AND/OR FUNDING FROM FISCAL YEAR 2008 TO FISCAL YEAR 2009**

Agency: Education Department-Public School Academic Facilities & Transportation

Program: Academic Facilities ECP

Act #: 1237 of 2007 Section(s) #: 4 & 6

Estimated Carry Forward Amount \$ 0.00 Appropriation  Funds

Funding Source: Educ Facilities Partnership

**Accounting Information:**

Business Area: 0500 Funds Center: 4HR Fund: EFP Functional Area: EDUC

| Line Item | Commitment Item | Estimated Carry Forward Amount | Actual Carry Forward Amount |
|-----------|-----------------|--------------------------------|-----------------------------|
|           |                 |                                |                             |
| Total     |                 | \$ 0.00                        | \$ 0.00                     |

Current law requires a written statement be submitted to the DFA Office of Budget stating the reason(s) to carry forward appropriation and/or funding for a program or a specific line item within a program from the first fiscal year of the biennium to the second fiscal year of the biennium.

**Justification for carry forward of unexpended balance of appropriation and/or funding:**

No carry forward is expected in this Funds Center.

**Actual Funding Carry Forward Amount** \$ 0.00

**Current status of carry forward appropriation/funding:**

There is no budget associated with this program at this time.

Dr. Ken James  
Commissioner of Education

08-15-2008  
Date

## Change Level by Appropriation

**Appropriation:** 4KT - Academic Equipment  
**Funding Sources:** EFP - Educational Facilities Partnership Fund

### Agency Request

| Change Level         | 2009-2010  | Pos | Cumulative | % of BL | 2010-2011 | Pos | Cumulative | % of BL |
|----------------------|------------|-----|------------|---------|-----------|-----|------------|---------|
| C01 Existing Program | 15,000,000 | 0   | 15,000,000 | 100.0   | 0         | 0   | 0          | 0.0     |

### Executive Recommendation

| Change Level         | 2009-2010  | Pos | Cumulative | % of BL | 2010-2011 | Pos | Cumulative | % of BL |
|----------------------|------------|-----|------------|---------|-----------|-----|------------|---------|
| C01 Existing Program | 15,000,000 | 0   | 15,000,000 | 100.0   | 0         | 0   | 0          | 0.0     |

### Justification

|     |                                                                                                                                                                                                                                                                                            |  |  |  |  |  |  |  |
|-----|--------------------------------------------------------------------------------------------------------------------------------------------------------------------------------------------------------------------------------------------------------------------------------------------|--|--|--|--|--|--|--|
| C01 | The Division is requesting funds in the amount of \$15 million to fund the Academic Equipment Program. This program specified by Act 1426 has yet to begin. It is intended to assist school districts with the acquisition of academic equipment to support the state's academic programs. |  |  |  |  |  |  |  |
|-----|--------------------------------------------------------------------------------------------------------------------------------------------------------------------------------------------------------------------------------------------------------------------------------------------|--|--|--|--|--|--|--|

**CARRY FORWARD OF ANY UNEXPENDED BALANCE OF APPROPRIATION AND/OR FUNDING FROM FISCAL YEAR 2008 TO FISCAL YEAR 2009**

Agency: Education Department-Public School Academic Facilities & Transportation

Program: Academic Equipment

Act #: 1237 of 2007 Section(s) #: 4 & 6

Estimated Carry Forward Amount \$ 15,000,000.00      Appropriation       Funds

Funding Source: Educ Facilities Partnership

**Accounting Information:**

Business Area: 0500      Funds Center: 4KT      Fund: EFP      Functional Area: EDUC

| Line Item          | Commitment Item | Estimated Carry Forward Amount | Actual Carry Forward Amount |
|--------------------|-----------------|--------------------------------|-----------------------------|
| Academic Equipment | 5900046         | 15,000,000.00                  | 15,000,000.00               |
| Total              |                 | \$ 15,000,000.00               | \$ 15,000,000.00            |

Current law requires a written statement be submitted to the DFA Office of Budget stating the reason(s) to carry forward appropriation and/or funding for a program or a specific line item within a program from the first fiscal year of the biennium to the second fiscal year of the biennium.

**Justification for carry forward of unexpended balance of appropriation and/or funding:**

There is currently no plan to utilize this appropriation in the 2009 fiscal year.

**Actual Funding Carry Forward Amount**      \$ 0.00

**Current status of carry forward appropriation/funding:**

The carry forward appropriation in this program remains unfunded at this time.

Dr. Ken James  
Commissioner of Education

08-15-2008  
Date

## Change Level by Appropriation

**Appropriation:** 54Y - Academic Facilities High Growth  
**Funding Sources:** EFP - Educational Facilities Partnership Fund

### Agency Request

| Change Level |             | 2009-2010  | Pos | Cumulative | % of BL | 2010-2011 | Pos | Cumulative | % of BL |
|--------------|-------------|------------|-----|------------|---------|-----------|-----|------------|---------|
| C02          | New Program | 10,000,000 | 0   | 10,000,000 | 100.0   | 0         | 0   | 0          | 0.0     |

### Executive Recommendation

| Change Level |             | 2009-2010  | Pos | Cumulative | % of BL | 2010-2011 | Pos | Cumulative | % of BL |
|--------------|-------------|------------|-----|------------|---------|-----------|-----|------------|---------|
| C02          | New Program | 10,000,000 | 0   | 10,000,000 | 100.0   | 0         | 0   | 0          | 0.0     |

### Justification

|     |                                                                                                                                                                                                                                                                                                     |
|-----|-----------------------------------------------------------------------------------------------------------------------------------------------------------------------------------------------------------------------------------------------------------------------------------------------------|
| C02 | The Division is requesting funds in the amount of \$10 million to fund the Academic Facilities High-Growth program. These funds would be used to supplement construction in school districts meeting the definition of high-growth whose projects have been approved under the partnership program. |
|-----|-----------------------------------------------------------------------------------------------------------------------------------------------------------------------------------------------------------------------------------------------------------------------------------------------------|