

DAH - ARKANSAS ARTS COUNCIL

Enabling Laws

Act 237 of 2010
A.C.A. §13-8-101 et seq.

History and Organization

Agency Mission Statement

The Arkansas Arts Council will advance and empower the arts for the benefit of all Arkansans.

Brief Discussion of Statutory Responsibilities and Primary Activities

The Arkansas Arts Council was established in 1966 to enable the State to receive funds from the National Endowment for the Arts. In 1971, Act 359 (A.C.A. § 13-8-101 et seq.) gave independent agency status to the Arts Council, with an executive director and a 17-member council appointed by the Governor. In 1975, the Arts Council became a division of the Department of Arkansas Heritage.

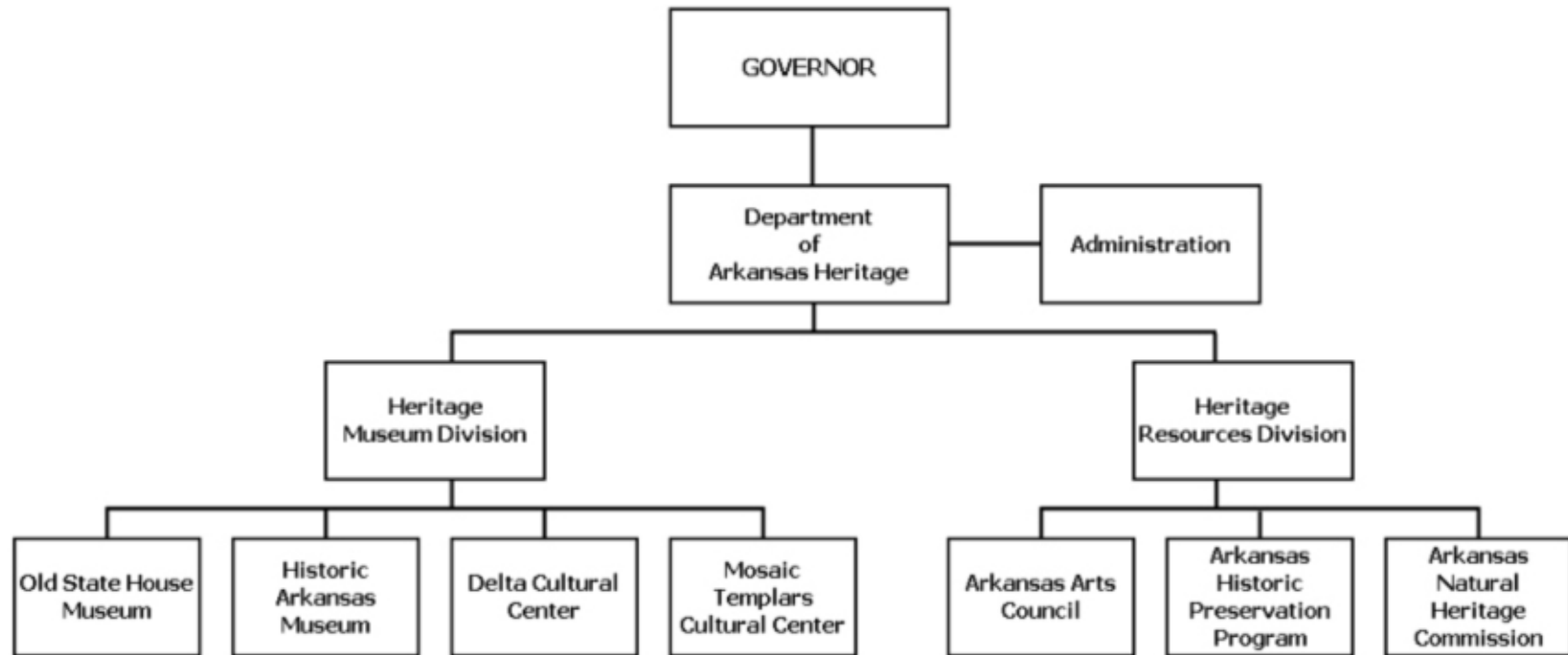
The Arts Council contributes to Arkansas's educational and economic development by investing state, federal, and private funds in community arts organizations, schools, youth service organizations, and other providers of cultural programs. The Arts in Education program funds artist residencies in schools and after school/summer programs. The agency provides operating support for established community arts organizations, and the Expansion Arts Program provides technical assistance and salary support to new and expanding arts organizations in rural and underserved areas. The statewide Arts on Tour program includes a diverse roster of Arkansas's finest performing artists; non-profit organizations and local governments are eligible to apply for funding assistance to present artists listed in the Arts on Tour Roster.

The Arts Council offers technical, supportive, and informational services for artists, administrators, and community leaders, as well as professional development opportunities for teachers and teaching artists. The Arts Council website provides information about the Council and contains online applications for the agency's various grant programs and artist rosters. The website, www.arkansasarts.org, also provides local, regional and national resource information to the arts community and the general public.

One of the most widely used on-line services at the Arts Council, the Arkansas Artist Registry, documents and promotes Arkansas visual artists.

Agency Board or Commission

The Arkansas Arts Advisory Council is composed of seventeen members appointed by the Governor for four-year terms. Two appointments are made from each of the eight planning and development districts, and one member serves at large. Council members meet each fiscal quarter and are charged with awarding all grant funds and with formulating policy for the future development of the arts in Arkansas.



Agency Commentary

See Agency Commentary in DAH - Central Administration.

Audit Findings

DIVISION OF LEGISLATIVE AUDIT
 AUDIT OF :
 ARKANSAS DEPARTMENT OF HERITAGE
 FOR THE YEAR ENDED JUNE 30, 2012

Findings

Recommendations

Audit findings are reported under DAH-Central Administration.

Employment Summary

	Male	Female	Total	%
White Employees	1	7	8	89 %
Black Employees	1	0	1	11 %
Other Racial Minorities	0	0	0	0 %
Total Minorities			1	11 %
Total Employees			9	100 %

Publications

A.C.A. 25-1-204

Name	Statutory Authorization	Required for		# of Copies	Reason(s) for Continued Publication and Distribution
		Governor	General Assembly		
Annual Report	A.C.A. §13-8-106(f)	Y	N	1	Governor's Office request

Department Appropriation Summary

Historical Data

Agency Request and Executive Recommendation

Appropriation	2009-2010		2010-2011		2010-2011		2011-2012						2012-2013					
	Actual	Pos	Budget	Pos	Authorized	Pos	Base Level	Pos	Agency	Pos	Executive	Pos	Base Level	Pos	Agency	Pos	Executive	Pos
484 Arts Council-State Operations	752,189	8	752,816	8	780,834	8	754,645	8	2,058,021	8	754,645	8	754,645	8	2,057,021	8	754,645	8
486 Arts Council - Federal Program	1,012,843	2	671,486	2	673,038	2	670,567	2	670,567	2	670,567	2	670,567	2	670,567	2	670,567	2
943 Arts Council - Cash in Treasury	69,487	0	180,141	0	204,041	0	180,141	0	180,141	0	180,141	0	180,141	0	180,141	0	180,141	0
Total	1,834,519	10	1,604,443	10	1,657,913	10	1,605,353	10	2,908,729	10	1,605,353	10	1,605,353	10	2,907,729	10	1,605,353	10

Funding Sources		%		%		%		%		%		%		%		%
Fund Balance 4000005	119,577	5.8	219,244	12.2			189,103	10.7	189,103	6.2	189,103	10.7	158,962	9.2	158,962	5.2
General Revenue 4000010	752,189	36.6	752,816	42.0			754,645	42.8	2,058,021	67.1	754,645	42.8	754,645	43.5	2,057,021	67.7
Federal Revenue 4000020	710,743	34.6	671,486	37.4			670,567	38.0	670,567	21.9	670,567	38.0	670,567	38.7	670,567	22.1
Cash Fund 4000045	169,154	8.2	150,000	8.4			150,000	8.5	150,000	4.9	150,000	8.5	150,000	8.6	150,000	4.9
Federal Funds-ARRA 4000244	302,100	14.7	0	0.0			0	0.0	0	0.0	0	0.0	0	0.0	0	0.0
Total Funds	2,053,763	100.0	1,793,546	100.0			1,764,315	100.0	3,067,691	100.0	1,764,315	100.0	1,734,174	100.0	3,036,550	100.0
Excess Appropriation/(Funding)	(219,244)		(189,103)				(158,962)		(158,962)		(158,962)		(128,821)		(128,821)	
Grand Total	1,834,519		1,604,443				1,605,353		2,908,729		1,605,353		1,605,353		2,907,729	

Agency Position Usage Report

FY2008 - 2009						FY2009 - 2010						FY2010 - 2011					
Authorized in Act	Budgeted			Unbudgeted	% of Authorized Unused	Authorized in Act	Budgeted			Unbudgeted	% of Authorized Unused	Authorized in Act	Budgeted			Unbudgeted	% of Authorized Unused
	Filled	Unfilled	Total	Total			Filled	Unfilled	Total	Total			Filled	Unfilled	Total	Total	
10	10	0	10	0	0.00 %	10	10	0	10	0	0.00 %	10	9	1	10	0	10.00 %

Analysis of Budget Request

Appropriation: 484 - Arts Council-State Operations

Funding Sources: HRA - Arkansas Heritage Fund

This appropriation provides general revenue funding for the Department of Arkansas Heritage - Office of Arts and Humanities (Arts Council). Established in 1971, the purpose of this Agency is to provide a comprehensive statewide program for the support of arts in Arkansas by providing services and grants to support arts endeavors that encourage and assist Arkansas artists. In addition, the Arts Council staff assists with related arts projects, including surveys, research, and planning.

Base Level salaries and matching do not include appropriation for a Cost of Living Adjustment or Career Service Payments.

Base Level includes appropriation and general revenue funding of \$754,645 each year with 8 Regular positions.

The Agency requests additional appropriation and general revenue funding of \$1,303,376 in FY12 and \$1,302,376 in FY13 for the following:

- Operating Expenses: Increase of \$2,376 each year for a 4% increase in rent as recommended by the Arkansas Building Authority.
- Grants and Aid: Increase of \$1.3 million each year to support the Community Arts Development Program, which supports local art organizations and the statewide Folk Art Program, and the Arts in Education Program, which initiates and enhances arts programs in schools and local art agencies by providing direct interaction with working artists in residencies. This request will raise Arkansas' per capita level of arts funding to the national average.
- Capital Outlay: Increase of \$1,000 in FY12 only to provide for sales tax for a replacement vehicle from the DFA Pool.

The Executive Recommendation provides for Base Level.

Appropriation Summary

Appropriation: 484 - Arts Council-State Operations

Funding Sources: HRA - Arkansas Heritage Fund

Historical Data

Agency Request and Executive Recommendation

Commitment Item		Historical Data			Agency Request and Executive Recommendation			Agency Request and Executive Recommendation		
		2009-2010 Actual	2010-2011 Budget	2010-2011 Authorized	2011-2012			2012-2013		
					Base Level	Agency	Executive	Base Level	Agency	Executive
Regular Salaries	5010000	393,699	379,572	386,701	374,972	374,972	374,972	374,972	374,972	374,972
#Positions		8	8	8	8	8	8	8	8	8
Personal Services Matching	5010003	114,062	106,641	116,131	113,070	113,070	113,070	113,070	113,070	113,070
Operating Expenses	5020002	51,428	66,603	78,002	66,603	68,979	66,603	66,603	68,979	66,603
Conference & Travel Expenses	5050009	0	0	0	0	0	0	0	0	0
Professional Fees	5060010	0	0	0	0	0	0	0	0	0
Data Processing	5090012	0	0	0	0	0	0	0	0	0
Grants and Aid	5100004	193,000	200,000	200,000	200,000	1,500,000	200,000	200,000	1,500,000	200,000
Capital Outlay	5120011	0	0	0	0	1,000	0	0	0	0
Total		752,189	752,816	780,834	754,645	2,058,021	754,645	754,645	2,057,021	754,645
Funding Sources										
General Revenue	4000010	752,189	752,816		754,645	2,058,021	754,645	754,645	2,057,021	754,645
Total Funding		752,189	752,816		754,645	2,058,021	754,645	754,645	2,057,021	754,645
Excess Appropriation/(Funding)		0	0		0	0	0	0	0	0
Grand Total		752,189	752,816		754,645	2,058,021	754,645	754,645	2,057,021	754,645

Change Level by Appropriation

Appropriation: 484 - Arts Council-State Operations
Funding Sources: HRA - Arkansas Heritage Fund

Agency Request

Change Level		2011-2012	Pos	Cumulative	% of BL	2012-2013	Pos	Cumulative	% of BL
BL	Base Level	754,645	8	754,645	100.0	754,645	8	754,645	100.0
C01	Existing Program	1,303,376	0	2,058,021	272.7	1,302,376	0	2,057,021	272.6

Executive Recommendation

Change Level		2011-2012	Pos	Cumulative	% of BL	2012-2013	Pos	Cumulative	% of BL
BL	Base Level	754,645	8	754,645	100.0	754,645	8	754,645	100.0
C01	Existing Program	0	0	754,645	100.0	0	0	754,645	100.0

Justification

C01	Arts Council is requesting an increase of \$2,376 each year to accommodate an anticipated 4% increase in rent costs, and Capital Outlay of \$1,000 to cover the cost of sales tax on a new vehicle for FY12. We will be requesting a replacement vehicle from the DFA Pool and the agency is required to pay the sales tax. The agency is also requesting an increase of \$1,300,000 each year for Grants. This will raise Arkansas's state arts funding from the FY10 level of \$.55 per capita to \$1.00 per Arkansan, increasing the agency's investment in Community Arts Development and Arts Education. The requested funding will provide additional support to local arts organizations and expand artist residencies in schools and after school/summer programs.
-----	----------------------------------------------------------------------------------------------------------------------------------------------------------------------------------------------------------------------------------------------------------------------------------------------------------------------------------------------------------------------------------------------------------------------------------------------------------------------------------------------------------------------------------------------------------------------------------------------------------------------------------------------------------------------------------------------------------------------------------------------------------------------------

Analysis of Budget Request

Appropriation: 486 - Arts Council - Federal Program

Funding Sources: FHH - Natural & Cultural Heritage Federal

This appropriation provides for federal funding received from the National Endowment for the Arts. The Department utilizes this appropriation to provide art programs and grants to promote and assist Arkansas artists.

Base Level salaries and matching do not include appropriation for a Cost of Living Adjustment or Career Service Payments.

Th Agency Base Level Request includes appropriation of \$670,567 each year with two (2) Regular Positions and two (2) Extra Help positions.

The Executive Recommendation provides for the Agency Request.

Appropriation Summary

Appropriation: 486 - Arts Council - Federal Program
Funding Sources: FHH - Natural & Cultural Heritage Federal

Historical Data

Agency Request and Executive Recommendation

Commitment Item	Historical Data			Agency Request and Executive Recommendation			Agency Request and Executive Recommendation		
	2009-2010 Actual	2010-2011 Budget	2010-2011 Authorized	2011-2012			2012-2013		
				Base Level	Agency	Executive	Base Level	Agency	Executive
Regular Salaries 5010000	66,025	66,374	67,300	65,574	65,574	65,574	65,574	65,574	65,574
#Positions	2	2	2	2	2	2	2	2	2
Extra Help 5010001	0	3,000	3,000	3,000	3,000	3,000	3,000	3,000	3,000
#Extra Help	0	2	2	2	2	2	2	2	2
Personal Services Matching 5010003	23,073	22,938	23,564	22,819	22,819	22,819	22,819	22,819	22,819
Operating Expenses 5020002	33,211	37,252	37,252	37,252	37,252	37,252	37,252	37,252	37,252
Conference & Travel Expenses 5050009	2,137	10,500	10,500	10,500	10,500	10,500	10,500	10,500	10,500
Professional Fees 5060010	8,963	7,970	7,970	7,970	7,970	7,970	7,970	7,970	7,970
Data Processing 5090012	0	0	0	0	0	0	0	0	0
Grants and Aid 5100004	577,334	523,452	523,452	523,452	523,452	523,452	523,452	523,452	523,452
Capital Outlay 5120011	0	0	0	0	0	0	0	0	0
ARRA of 2009 5900052	302,100	0	0	0	0	0	0	0	0
Total	1,012,843	671,486	673,038	670,567	670,567	670,567	670,567	670,567	670,567
Funding Sources									
Federal Revenue 4000020	710,743	671,486		670,567	670,567	670,567	670,567	670,567	670,567
Federal Funds-ARRA 4000244	302,100	0		0	0	0	0	0	0
Total Funding	1,012,843	671,486		670,567	670,567	670,567	670,567	670,567	670,567
Excess Appropriation/(Funding)	0	0		0	0	0	0	0	0
Grand Total	1,012,843	671,486		670,567	670,567	670,567	670,567	670,567	670,567

Analysis of Budget Request

Appropriation: 943 - Arts Council - Cash in Treasury

Funding Sources: NNH - Arts & Humanities Cash

This appropriation is funded from cash receipts generated by registration fees, interest income and the sales of items purchased for display and for workshop sessions. The Agency coordinates an annual conference on the arts as well as several smaller conferences and workshops to support the education, organizational development, and marketing Arkansas's craft and traditional artists.

The Agency Base Level Request includes appropriation of \$180,141 each year of the biennium.

The Executive Recommendation provides for the Agency Request. Expenditure of appropriation is contingent upon available funding.

Appropriation Summary

Appropriation: 943 - Arts Council - Cash in Treasury

Funding Sources: NNH - Arts & Humanities Cash

Historical Data

Agency Request and Executive Recommendation

Commitment Item		Historical Data			Agency Request and Executive Recommendation			Agency Request and Executive Recommendation		
		2009-2010 Actual	2010-2011 Budget	2010-2011 Authorized	2011-2012			2012-2013		
					Base Level	Agency	Executive	Base Level	Agency	Executive
Operating Expenses	5020002	18,237	18,250	18,250	18,250	18,250	18,250	18,250	18,250	18,250
Conference & Travel Expenses	5050009	1,000	1,000	1,000	1,000	1,000	1,000	1,000	1,000	1,000
Professional Fees	5060010	250	5,500	5,500	5,500	5,500	5,500	5,500	5,500	5,500
Data Processing	5090012	0	0	0	0	0	0	0	0	0
Grants and Aid	5100004	50,000	155,391	179,291	155,391	155,391	155,391	155,391	155,391	155,391
Capital Outlay	5120011	0	0	0	0	0	0	0	0	0
Total		69,487	180,141	204,041	180,141	180,141	180,141	180,141	180,141	180,141
Funding Sources										
Fund Balance	4000005	119,577	219,244		189,103	189,103	189,103	158,962	158,962	158,962
Cash Fund	4000045	169,154	150,000		150,000	150,000	150,000	150,000	150,000	150,000
Total Funding		288,731	369,244		339,103	339,103	339,103	308,962	308,962	308,962
Excess Appropriation/(Funding)		(219,244)	(189,103)		(158,962)	(158,962)	(158,962)	(128,821)	(128,821)	(128,821)
Grand Total		69,487	180,141		180,141	180,141	180,141	180,141	180,141	180,141