

LAW ENFORCEMENT STANDARDS & TRAINING

Enabling Laws

Act 238 of 2016
A.C.A. §12-9-101 et seq.

History and Organization

The Commission on Law Enforcement Standards and Training (CLEST) is committed to providing the law enforcement profession in the State of Arkansas with the very best training and standards available. Furthermore, CLEST recognizes its responsibility to the citizens of our State and is dedicated to maintaining and enforcing these standards by utilizing the latest in law enforcement instructional methods, techniques and technology, and through emphasizing professional ethics and personal accountability. CLEST is comprised of the Arkansas Law Enforcement Training Academy (ALETA East Camden), Northwest Arkansas Law Enforcement Training Academy (NW ALETA Springdale), and the Office of Law Enforcement Standards (OLES Little Rock).

The Arkansas Law Enforcement Training Academy was established by the 1963 Arkansas General Assembly passage of Act 526, although operational funding would be delayed by two years. Concerned law enforcement administrators continued to work towards establishing an academy capable of providing training to law enforcement officers within the state. The successful passing of Act 514 provided the necessary appropriations for operations. Moreover, the academy was also placed under the supervision and the direction of a three-member board appointed by the Governor (Act 172).

Land owned by the United States Government and utilized as the Shumaker Ordinance Plant was converted to private enterprise by Brown & Root of Houston, Texas. It was decided that a portion of this land would be donated to the State Department of Education, with the understanding that 13.6 acres would be utilized for the law enforcement training academy. Consequently, the ALETA was provided with permanent facilities in East Camden. The original structure was formerly utilized as Bachelor Officers Quarters at the Naval Depot and it is still currently part of today's facility. It has since been modified and converted in order to house, feed, and train law enforcement officers from around the entire state.

The International Paper Company donated 56.9 additional adjoining acres to the ALETA (East Camden) in 1971. On August 26, 1986, the total acreage of the academy was increased by a donation of 2.21 acres by Highland Resources Incorporated (formerly known as HRI

Vehicle Operation facility. This final land purchase brought the total acreage to the current 101.39 acres being utilized today.

The Arkansas Law Enforcement Training Academy proudly graduated thirty-four police officers in Basic Class 68-A, a three-week course conducted from January 28 - February 16, 1968. By the early 1970's, it was realized that the existing facilities were inadequate. Planning for expansion began and the \$1.3 million dollar construction of new facilities was completed in March, 1976.

Governor David Pryor signed House Bill 577 (enacted by the Seventieth General Assembly) on March 18, 1975 that created the Executive Commission on Law Enforcement Standards. This became known as Act 452 of 1975, later compiled as AR Statute Ann. 42-1001-1009, and presently Arkansas Code of 1987 Annotated 12-9-101 through 12-9-109.

The Commission was composed of five members that were appointed by the Governor to serve five-year terms, which were staggered. Act 452 required the Commission to formally meet a minimum of four times a year, adopt rules and regulations to govern its operations, and select one of its members as Chairman. Moreover, the Commission is authorized to enter into contracts or do such things as may be necessary and incidental to the administration of the Act. The Minimum Standards became effective January 1, 1978.

Act 45 of 1981 abolished the Department of Public Safety and transferred the Arkansas Law Enforcement Training Academy under the newly created Arkansas Commission on Law Enforcement Standards and Training. This same act also abolished the Executive Commission on Law Enforcement Standards and transferred that agency to the Arkansas Commission on Law Enforcement Standards and Training. This Act became effective July 1, 1981 and established the eventual and present ten-member Commission board.

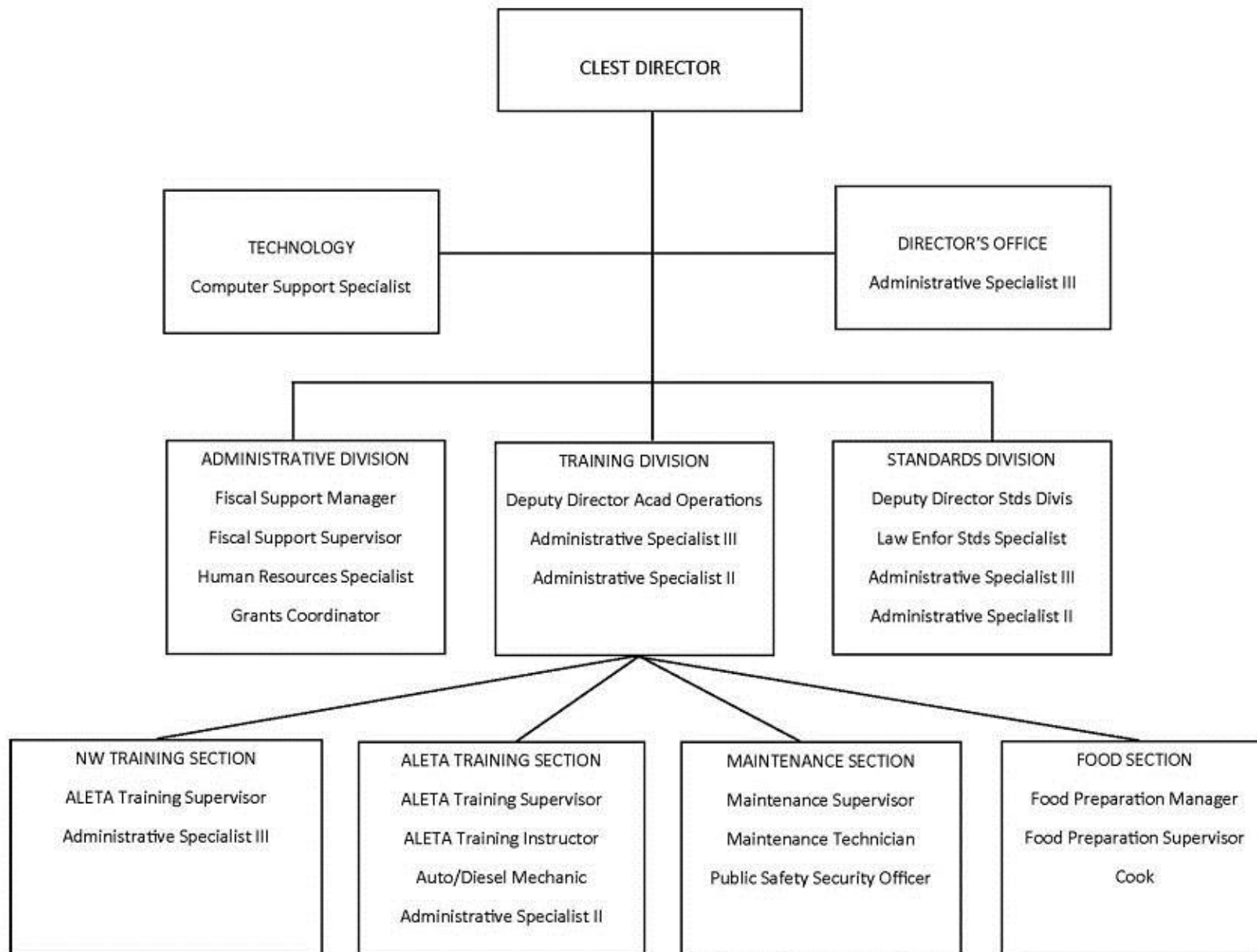
The Arkansas Law Enforcement Training academy graduated 691 new officers from January 2014-June-2016. In the same time period, ALETA trained 2148 incumbent officers and certified 2669 hours in specialized/advanced training. The number of new officers and incumbent officers receiving training at ALETA continues to increase.

As the number of law enforcement officers hired in the State of Arkansas increased, so did the need for additional training facilities. The need for a satellite facility was apparent. Utilizing the Jones Family Center in Springdale, the NW Arkansas Law Enforcement Training Academy held its first Basic Police Training Course in 1997. Plans were submitted and approved by the legislature to construct a permanent facility for the NW Academy. In 1998, approximately 72 acres of land was purchased. In February 2001, construction began on the 12,000 square foot facility which was completed in the fall of 2001. The NW-ALETA is now equipped with main offices, complete showers and restroom facilities, three classrooms, gymnasium, and secured armory. Furthermore, the property continues to maintain two simulation houses and school bus for practical training, as well as the 30-lane firing range and explosive breaching pits.

The NW-ALETA campus graduated 179 new officers from January 2014-June-2016. In the same time period, NW-ALETA trained 1718 incumbent officers and certified 1054 hours in specialized/advanced training. The NW-ALETA campus continues to partner with agencies in

the area in expanding training opportunities for officers.

The fall of 2013 brought forth a partnership with the Arkansas Community Corrections to create a course that would provide new probation/parole officers with the most effective and up-to-date training available. On December 6, 2013, the partnership proudly graduated Class 13P-01 from the very first Basic Parole and Probation course. Due to the overwhelming success of this course, the ALETA continues to provide additional parole courses and expand the curriculum. From January 2014-June 2016, ALETA graduated 176 new Probation and Parole Officers.



Agency Commentary

Today, there are higher standards for the selection of police officers in Arkansas than ever before and stricter accountability by the Commission on Law Enforcement Standards and Training (CLEST). In addition, with the ever increasing attrition in the profession, there is little doubt that smaller communities feel the shortage of new officers more than most. This is why the structure of training law enforcement officers in Arkansas is critical to ensure that the integrity and capabilities of our Arkansas officers remain strong. CLEST is comprised of the Arkansas Law Enforcement Training Academy, Camden (ALETA), Northwest Arkansas Law Enforcement Training Academy, (NW ALETA) Springdale, and the Office of Law Enforcement Standards, Little Rock (OLES). ALETA/NW ALETA continues to see increases in the number of students due to the rising attrition in law enforcement. The more officers we train, the higher the costs. For our Standards office, higher attrition in the profession equates to additional audits and compliance data entry, issuance and withdrawal of certifications, etc. However, we are continuously analyzing these costs and identifying efficiency efforts.

The mission of the Arkansas Commission on Law Enforcement Standards and Training is to encourage the professional competency of law enforcement officers in the State of Arkansas by providing standards for employment and training; by providing, sponsoring, or conducting training; by conducting or stimulating studies and research designed to improve the administration of law enforcement, and by implementing the Commission's regulations. We must be sensitive to the needs of Arkansas law enforcement officers in the areas of standards and training and work diligently to afford officers every opportunity to successfully fulfill their obligations to the citizens of the State of Arkansas.

Continuous improvement is our motto.....we are obligated to continue to improve our facilities, equipment, technology, and staff so that we can serve officers and agencies professionally and progressively. We certify and deliver training to all Arkansas law enforcement officers. We also train probation/parole officers, jailers, coroners, constables, and telecommunication operators.

Training and regulating law enforcement officers is a big responsibility that must be met with the competency of solid staff and the technology and facilities that can accommodate the mission. We strive to create more efficient operations.

The Agency is requesting the following:

Law Enforcement Standards & Training - Operations (172)

The Agency is requesting Base Level each year of the biennium.

Special Training - Cash (D48)

The Agency is requesting \$50,000 in Capital Outlay for each year of the biennium to replace equipment due to age of our facilities and various equipment malfunctions such as kitchen equipment, maintenance equipment, facilities equipment.

911 Training & Education (86M)

The Agency is requesting \$117,901 in appropriation only in capital outlay each year of the biennium to utilize funds received from the AR ETS/911 Board.

Fallen Law Enforcement Officers (F63)

The Agency is requesting Base Level each year of the biennium.

Receiving the Base Level is critical to the operations of the Commission on Law Enforcement Standards and Training. Of utmost importance is the upgrades and maintenance to the Records Management System that maintains certification and training records for all officers in the State of Arkansas. With the demand for professional oversight of law enforcement officers, it is critical that we have the technology that allows for accountability in auditing the minimum requirements for officers. Opening the online portals of our Records Management System to law enforcement agencies will lend to increased efficiency and compliance to the Rules. This also allows CLEST to maintain more current revolving records of all Arkansas law enforcement officers and agencies.

Of equal importance, is ensuring that police officers in this state are adequately trained to meet the needs of the citizens of the State of Arkansas. The ALETA and NW ALETA campuses are seeing increases in the number of students receiving training. At the ALETA campus alone, more than 2800 officers have received state sponsored training since January 2014, with 6729 training hours being certified. At NW ALETA campus, more than 1800 officers received state sponsored training since January 2014, with 3562 training hours being certified. With the ever increasing numbers of officers being trained as well as the additional criminal justice entities that have sought our assistance in training and standards, we must receive the Base Level for each biennium or we would not be able to offer this vital function.

CLEST provides basic and advanced training to new police officers, probation officers, parole officers, dispatchers, jailers, constables, and coroners. CLEST is responsible for overseeing and enforcing the promulgated Rules set by the Commission. CLEST is the central repository for all training and certification of officers in Arkansas. If Base Level funding is not received, we could not meet our obligations.

Attorney General Funding (C64)

The Agency is not requesting to continue this appropriation in this biennium.

Audit Findings

DIVISION OF LEGISLATIVE AUDIT
AUDIT OF :
ARKANSAS COMMISSION ON LAW ENFORCEMENT STANDARDS AND TRAINING
FOR THE YEAR ENDED JUNE 30, 2014

Findings	Recommendations
None	None

State Contracts Over \$50,000 Awarded To Minority Owned Businesses Fiscal Year 2016

None

Employment Summary

	Male	Female	Total	%
White Employees	20	22	42	86 %
Black Employees	2	4	6	12 %
Other Racial Minorities	1	0	1	2 %
Total Minorities			7	14 %
Total Employees			49	100 %

Cash Fund Balance Description as of June 30, 2016

Fund Account	Balance	Type	Location
1080200	\$126,897	Checking	Farmer's Bank & Trust, Camden, AR. 71701

Statutory/Other Restrictions on use:

A.C.A. 19-6-109 (c) All nonrevenue receipts from the sale of property or income shall be credited to the fund from which the agency draws its support.

Statutory Provisions for Fees, Fines, Penalties:

0

Revenue Receipts Cycle:

Funds are deposited in bank account when received by agency.

Fund Balance Utilization:

Funds are being used for purchase of students uniforms, food for the students, also to upgrade, repair and maintain our main complex.

Publications

A.C.A. 25-1-201 et seq.

Name	Statutory Authorization	Required for		# of Copies	Reason(s) for Continued Publication and Distribution	Unbound Black & White Copies Produced During the Last Two Years	Cost of Unbound Copies Produced During the Last Two Years
		Governor	General Assembly				
Annual Report	A.C.A. §12-9-101	N	N	0	As required by Arkansas Code	0	0.00

Department Appropriation Summary

Historical Data

Agency Request and Executive Recommendation

Appropriation	2015-2016		2016-2017		2016-2017		2017-2018						2018-2019						
	Actual	Pos	Budget	Pos	Authorized	Pos	Base Level	Pos	Agency	Pos	Executive	Pos	Base Level	Pos	Agency	Pos	Executive	Pos	
172 Law Enforcement Standards-Operations	3,284,558	52	3,289,926	54	3,438,735	55	3,301,965	54	3,301,965	54	3,301,965	54	3,304,173	54	3,304,173	54	3,304,173	54	
86M 911 Training & Education	153,610	1	225,135	1	212,335	1	147,396	1	265,297	1	265,297	1	147,396	1	265,297	1	265,297	1	
D48 Special Training-Cash	191,867	0	330,000	0	438,675	0	330,000	0	380,000	0	380,000	0	330,000	0	380,000	0	380,000	0	
F63 Fallen Law Enforcement Officers	0	0	25,000	0	25,000	0	25,000	0	25,000	0	25,000	0	25,000	0	25,000	0	25,000	0	
NOT REQUESTED FOR THE BIENNIUM																			
C64 AG Funding - Cash	4,842	0	0	0	94,624	0	0	0	0	0	0	0	0	0	0	0	0	0	
Total	3,634,877	53	3,870,061	55	4,209,369	56	3,804,361	55	3,972,262	55	3,972,262	55	3,806,569	55	3,974,470	55	3,974,470	55	

Funding Sources		%		%		%		%		%		%		%		%		%	
Fund Balance	4000005	179,787	4.7	230,953	5.8			95,296	2.5	95,296	2.5	95,296	2.5	126,033	3.3	8,132	0.2	8,132	0.2
General Revenue	4000010	3,266,103	84.5	3,289,926	83.0			3,301,965	86.0	3,301,965	86.0	3,301,965	86.0	3,304,173	85.3	3,304,173	88.0	3,304,173	88.0
Special Revenue	4000030	2,977	0.1	19,478	0.5			18,800	0.5	18,800	0.5	18,800	0.5	16,900	0.4	16,900	0.5	16,900	0.5
Cash Fund	4000045	206,539	5.3	225,000	5.7			225,000	5.9	225,000	5.9	225,000	5.9	225,000	5.8	225,000	6.0	225,000	6.0
Miscellaneous Transfers	4000355	210,424	5.4	200,000	5.0			200,000	5.2	200,000	5.2	200,000	5.2	200,000	5.2	200,000	5.3	200,000	5.3
Total Funds		3,865,830	100.0	3,965,357	100.0			3,841,061	100.0	3,841,061	100.0	3,841,061	100.0	3,872,106	100.0	3,754,205	100.0	3,754,205	100.0
Excess Appropriation/(Funding)		(230,953)		(95,296)				(36,700)		131,201		131,201		(65,537)		220,265		220,265	
Grand Total		3,634,877		3,870,061				3,804,361		3,972,262		3,972,262		3,806,569		3,974,470		3,974,470	

The miscellaneous transfer comes from a fund transfer from the Arkansas Emergency Telephone Service Board.

FY17 Budget amount in Regular Salaries and Personal Services Matching for 86M exceeds the authorized amount due to salary and matching rate adjustments during the 2015-2017 Biennium.

Variances in fund balance due to unfunded appropriation in (D48) Special Training - Cash and (F63) Fallen Law Enforcement Officers.

Agency Position Usage Report

FY2014 - 2015						FY2015 - 2016						FY2016 - 2017					
Authorized in Act	Budgeted			Unbudgeted	% of Authorized Unused	Authorized in Act	Budgeted			Unbudgeted	% of Authorized Unused	Authorized in Act	Budgeted			Unbudgeted	% of Authorized Unused
	Filled	Unfilled	Total	Total			Filled	Unfilled	Total	Total			Filled	Unfilled	Total	Total	
56	52	4	56	0	7.14 %	56	48	8	56	0	14.29 %	56	48	8	56	0	14.29 %

Analysis of Budget Request

Appropriation: 172 - Law Enforcement Standards-Operations

Funding Sources: HUA - Miscellaneous Agencies Fund

This General Revenue appropriation provides for the operations of the Commission on Law Enforcement Standards and Training (CLEST). CLEST provides basic training for new officers and specialized training for certified police officers at the Arkansas Law Enforcement Training Academy (ALETA) near East Camden and in Springdale, while providing field training classes as requested around the State. CLEST and ALETA's goal is to establish the role of the law enforcement officer as a professional, thereby presenting the citizens of the State of Arkansas with officers who have the knowledge and skills to detect, prevent and reduce crime.

Base Level Regular Salaries and Personal Services Matching include the continuation of the previously authorized 2017 Salaries and Career Service Payments for eligible employees. Personal Services Matching includes the monthly contribution for State employee's health insurance for a total State match per budgeted employee of \$420 per month. Base Level salaries and matching do not include appropriation for a Cost of Living Adjustment or Merit Pay Increases.

The Agency Request is for continuation of Base Level in each year of the biennium.

The Executive Recommendation provides for the Agency Request.

Appropriation Summary

Appropriation: 172 - Law Enforcement Standards-Operations

Funding Sources: HUA - Miscellaneous Agencies Fund

Historical Data

Agency Request and Executive Recommendation

Commitment Item		Historical Data			2017-2018			2018-2019		
		2015-2016 Actual	2016-2017 Budget	2016-2017 Authorized	Base Level	Agency	Executive	Base Level	Agency	Executive
Regular Salaries	5010000	1,748,715	1,831,310	1,838,989	1,833,211	1,833,211	1,833,211	1,835,011	1,835,011	1,835,011
#Positions		52	54	55	54	54	54	54	54	54
Personal Services Matching	5010003	664,899	679,260	695,014	689,398	689,398	689,398	689,806	689,806	689,806
Operating Expenses	5020002	826,763	751,496	821,872	751,496	751,496	751,496	751,496	751,496	751,496
Conference & Travel Expenses	5050009	14,190	17,500	17,500	17,500	17,500	17,500	17,500	17,500	17,500
Professional Fees	5060010	10,204	10,360	15,360	10,360	10,360	10,360	10,360	10,360	10,360
Data Processing	5090012	0	0	0	0	0	0	0	0	0
Capital Outlay	5120011	19,787	0	50,000	0	0	0	0	0	0
Total		3,284,558	3,289,926	3,438,735	3,301,965	3,301,965	3,301,965	3,304,173	3,304,173	3,304,173
Funding Sources										
General Revenue	4000010	3,266,103	3,289,926		3,301,965	3,301,965	3,301,965	3,304,173	3,304,173	3,304,173
Miscellaneous Transfers	4000355	18,455	0		0	0	0	0	0	0
Total Funding		3,284,558	3,289,926		3,301,965	3,301,965	3,301,965	3,304,173	3,304,173	3,304,173
Excess Appropriation/(Funding)		0	0		0	0	0	0	0	0
Grand Total		3,284,558	3,289,926		3,301,965	3,301,965	3,301,965	3,304,173	3,304,173	3,304,173

Miscellaneous transfers are refunds and reimbursements to the Agency.

**CARRY FORWARD OF ANY REMAINING FUND BALANCES
FROM FISCAL YEAR 2016 TO FISCAL YEAR 2017**

Agency: Law Enforcement Standards & Training Commission

Program: Law Enforcement Standards-Operations

Act #: 29 Section(s) #: 2 & 7

Estimated Carry Forward Amount \$ 0.00 Funding Source: Miscellaneous Agencies

Accounting Information:

Business Area: 0950 Funds Center: 172 Fund: HUA Functional Area: SFTY

Current law requires a written statement be submitted to the DFA Office of Budget stating the reason(s) to carry forward funding for a program or a specific line item within a program remaining on June 30th of a fiscal year.

Justification for carry forward of fund balance:

There will be no funds available for carry forward.

Actual Funding Carry Forward Amount \$ 0.00

Current status of carry forward funding:

All funds expensed in FY16.

Jami L. Cook
Director

08-12-2016
Date

Analysis of Budget Request

Appropriation: 86M - 911 Training & Education

Funding Sources: HUA - Miscellaneous Agencies Fund

Agency uses this appropriation for personal services and operating expenses of the Arkansas Commission on Law Enforcement Standards and Training - 911 Training Education. Funding for this appropriation comes from a fund transfer of \$200,000 from the Arkansas Emergency Telephone Service Board.

Base Level Regular Salaries and Personal Services Matching include the continuation of the previously authorized 2017 Salaries and Career Service Payments for eligible employees. Personal Services Matching includes the monthly contribution for State employee's health insurance for a total State match per budgeted employee of \$420 per month. Base Level salaries and matching do not include appropriation for a Cost of Living Adjustment or Merit Pay Increases.

The Agency's Change Level Request is for appropriation only of \$117,901 in Capital Outlay for each year of the biennium in order to utilize funds received from the ETS/911 Board.

The Executive Recommendation provides for the Agency Request.

Appropriation Summary

Appropriation: 86M - 911 Training & Education

Funding Sources: HUA - Miscellaneous Agencies Fund

Historical Data

Agency Request and Executive Recommendation

Commitment Item		Historical Data			Agency Request and Executive Recommendation			Agency Request and Executive Recommendation		
		2015-2016 Actual	2016-2017 Budget	2016-2017 Authorized	2017-2018			2018-2019		
					Base Level	Agency	Executive	Base Level	Agency	Executive
Regular Salaries	5010000	51,254	49,085	38,458	49,085	49,085	49,085	49,085	49,085	49,085
#Positions		1	1	1	1	1	1	1	1	1
Personal Services Matching	5010003	16,480	15,951	13,778	16,212	16,212	16,212	16,212	16,212	16,212
Operating Expenses	5020002	44,987	55,099	55,099	55,099	55,099	55,099	55,099	55,099	55,099
Conference & Travel Expenses	5050009	19,139	12,000	12,000	12,000	12,000	12,000	12,000	12,000	12,000
Professional Fees	5060010	9,250	15,000	15,000	15,000	15,000	15,000	15,000	15,000	15,000
Data Processing	5090012	0	0	0	0	0	0	0	0	0
Capital Outlay	5120011	12,500	78,000	78,000	0	117,901	117,901	0	117,901	117,901
Total		153,610	225,135	212,335	147,396	265,297	265,297	147,396	265,297	265,297
Funding Sources										
Fund Balance	4000005	60,205	98,564		73,429	73,429	73,429	126,033	8,132	8,132
Miscellaneous Transfers	4000355	191,969	200,000		200,000	200,000	200,000	200,000	200,000	200,000
Total Funding		252,174	298,564		273,429	273,429	273,429	326,033	208,132	208,132
Excess Appropriation/(Funding)		(98,564)	(73,429)		(126,033)	(8,132)	(8,132)	(178,637)	57,165	57,165
Grand Total		153,610	225,135		147,396	265,297	265,297	147,396	265,297	265,297

FY17 Budget amount in Regular Salaries and Personal Services Matching exceeds the authorized amount due to salary and matching rate adjustments during the 2015-2017 Biennium.

Funding for this appropriation comes from a \$200,000 transfer from the Arkansas Emergency Telephone Service Board.

Change Level by Appropriation

Appropriation: 86M - 911 Training & Education
Funding Sources: HUA - Miscellaneous Agencies Fund

Agency Request

Change Level		2017-2018	Pos	Cumulative	% of BL	2018-2019	Pos	Cumulative	% of BL
BL	Base Level	147,396	1	147,396	100.0	147,396	1	147,396	100.0
C01	Existing Program	117,901	0	265,297	180.0	117,901	0	265,297	180.0

Executive Recommendation

Change Level		2017-2018	Pos	Cumulative	% of BL	2018-2019	Pos	Cumulative	% of BL
BL	Base Level	147,396	1	147,396	100.0	147,396	1	147,396	100.0
C01	Existing Program	117,901	0	265,297	180.0	117,901	0	265,297	180.0

Justification

C01	The agency is requesting \$117,901 in Capital Outlay to purchase simulators for the 911 program.
-----	--

Analysis of Budget Request

Appropriation: D48 - Special Training-Cash

Funding Sources: 108 - Law Enforcement Standards and Training - Cash

The Commission on Law Enforcement Standards and Training uses this cash appropriation for Operating Expenses and Capital Outlay associated with Special Training. Fees are collected from state agencies for the use of the Training Academy's facilities for special training of their police officers and for meals purchased by the Fire Training Academy for students enrolled in training. The Commission uses this appropriation to buy uniforms (up to \$40,000 annually pursuant to A.C.A. §12-9-111), purchase equipment and supplies, and for facility maintenance.

The Agency's Change Level Request is for appropriation of \$50,000 in each year of the biennium to replace equipment.

Executive Recommendation provides for the Agency Request. Expenditure of appropriation is contingent upon available funding.

Appropriation Summary

Appropriation: D48 - Special Training-Cash

Funding Sources: 108 - Law Enforcement Standards and Training - Cash

Historical Data

Agency Request and Executive Recommendation

Commitment Item		Historical Data			Agency Request and Executive Recommendation			Agency Request and Executive Recommendation		
		2015-2016 Actual	2016-2017 Budget	2016-2017 Authorized	2017-2018			2018-2019		
					Base Level	Agency	Executive	Base Level	Agency	Executive
Operating Expenses	5020002	186,190	330,000	368,675	330,000	330,000	330,000	330,000	330,000	330,000
Conference & Travel Expenses	5050009	0	0	0	0	0	0	0	0	0
Professional Fees	5060010	472	0	20,000	0	0	0	0	0	0
Data Processing	5090012	0	0	0	0	0	0	0	0	0
Capital Outlay	5120011	5,205	0	50,000	0	50,000	50,000	0	50,000	50,000
Total		191,867	330,000	438,675	330,000	380,000	380,000	330,000	380,000	380,000
Funding Sources										
Fund Balance	4000005	112,195	126,867		21,867	21,867	21,867	0	0	0
Cash Fund	4000045	206,539	225,000		225,000	225,000	225,000	225,000	225,000	225,000
Total Funding		318,734	351,867		246,867	246,867	246,867	225,000	225,000	225,000
Excess Appropriation/(Funding)		(126,867)	(21,867)		83,133	133,133	133,133	105,000	155,000	155,000
Grand Total		191,867	330,000		330,000	380,000	380,000	330,000	380,000	380,000

Change Level by Appropriation

Appropriation: D48 - Special Training-Cash

Funding Sources: 108 - Law Enforcement Standards and Training - Cash

Agency Request

Change Level		2017-2018	Pos	Cumulative	% of BL	2018-2019	Pos	Cumulative	% of BL
BL	Base Level	330,000	0	330,000	100.0	330,000	0	330,000	100.0
C01	Existing Program	50,000	0	380,000	115.2	50,000	0	380,000	115.2

Executive Recommendation

Change Level		2017-2018	Pos	Cumulative	% of BL	2018-2019	Pos	Cumulative	% of BL
BL	Base Level	330,000	0	330,000	100.0	330,000	0	330,000	100.0
C01	Existing Program	50,000	0	380,000	115.2	50,000	0	380,000	115.2

Justification

C01	The agency is requesting \$50,000.00 in Capital Outlay for each year of the biennium to replace equipment due to age of our facilities and various equipment malfunctions such as kitchen equipment, maintenance equipment, facilities equipment.
-----	---

Analysis of Budget Request

Appropriation: F63 - Fallen Law Enforcement Officers

Funding Sources: SLS - Fallen Law Enforcement Officers' Beneficiary Fund

This appropriation provides for personal services, operating expenses, and grants to provide support and assistance to beneficiaries of fallen law enforcement officers. Funding for this appropriation is special revenue generated by special license plate fees (A.C.A. § 27-24-1315, § 27-24-1413, § 27-24-1414).

The Agency Request is for continuation of Base Level in each year of the biennium.

The Executive Recommendation provides for the Agency Request.

Appropriation Summary

Appropriation: F63 - Fallen Law Enforcement Officers

Funding Sources: SLS - Fallen Law Enforcement Officers' Beneficiary Fund

Historical Data

Agency Request and Executive Recommendation

Commitment Item	Historical Data			2017-2018			2018-2019		
	2015-2016 Actual	2016-2017 Budget	2016-2017 Authorized	Base Level	Agency	Executive	Base Level	Agency	Executive
Fallen Law Enforcement Officers 5900046	0	25,000	25,000	25,000	25,000	25,000	25,000	25,000	25,000
Total	0	25,000	25,000	25,000	25,000	25,000	25,000	25,000	25,000
Funding Sources									
Fund Balance 4000005	2,545	5,522		0	0	0	0	0	0
Special Revenue 4000030	2,977	19,478		18,800	18,800	18,800	16,900	16,900	16,900
Total Funding	5,522	25,000		18,800	18,800	18,800	16,900	16,900	16,900
Excess Appropriation/(Funding)	(5,522)	0		6,200	6,200	6,200	8,100	8,100	8,100
Grand Total	0	25,000		25,000	25,000	25,000	25,000	25,000	25,000

Appropriation Summary

Appropriation: C64 - AG Funding - Cash

Funding Sources: 108 - AG Cash

Historical Data

Agency Request and Executive Recommendation

Commitment Item	Historical Data			2017-2018			2018-2019		
	2015-2016 Actual	2016-2017 Budget	2016-2017 Authorized	Base Level	Agency	Executive	Base Level	Agency	Executive
Cash - Attorney General 5900046	4,842	0	94,624	0	0	0	0	0	0
Total	4,842	0	94,624	0	0	0	0	0	0
Funding Sources									
Fund Balance 4000005	4,842	0		0	0	0	0	0	0
Total Funding	4,842	0		0	0	0	0	0	0
Excess Appropriation/(Funding)	0	0		0	0	0	0	0	0
Grand Total	4,842	0		0	0	0	0	0	0

APPROPRIATION NOT REQUESTED FOR THE 2017-2019 BIENNIUM