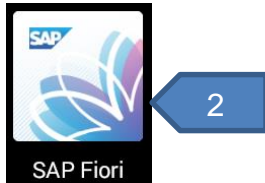
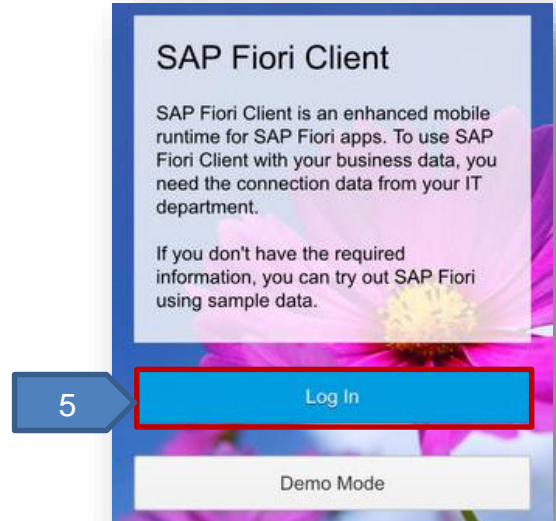


Purpose: Use this job aid to install EASE on your mobile device.

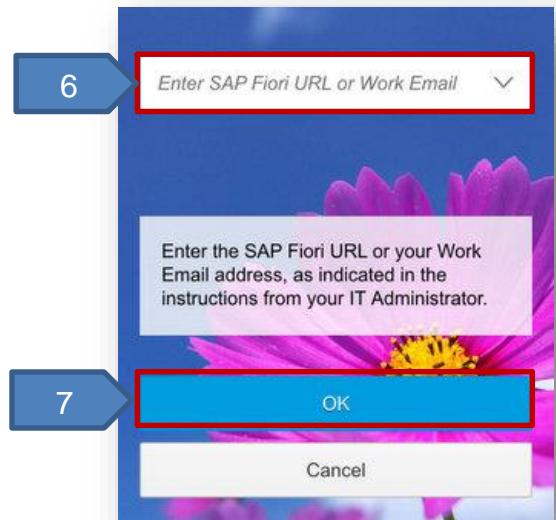
1. Go to your App store from your mobile device.
2. Search for **SAP Fiori Client**.



3. Click **GET**.
4. Click **OPEN**.
5. Click **Log In**.



6. Type the EASE URL address in the field provided
<https://ease.arkansas.gov>



7. Click **OK**.

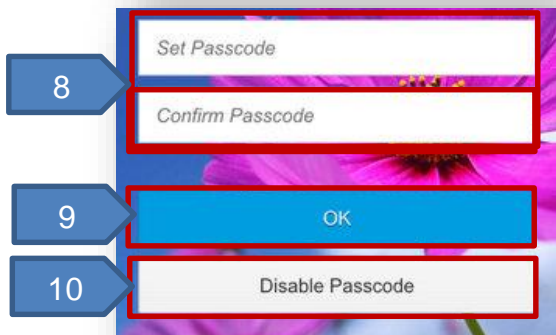
8. Set and Confirm a Passcode (Optional).

NOTE: To provide a secure environment, you may want to set a passcode upon initial setup. The minimum is 8 characters, and can be upper or lower case alphanumeric characters.

9. Click **OK**.

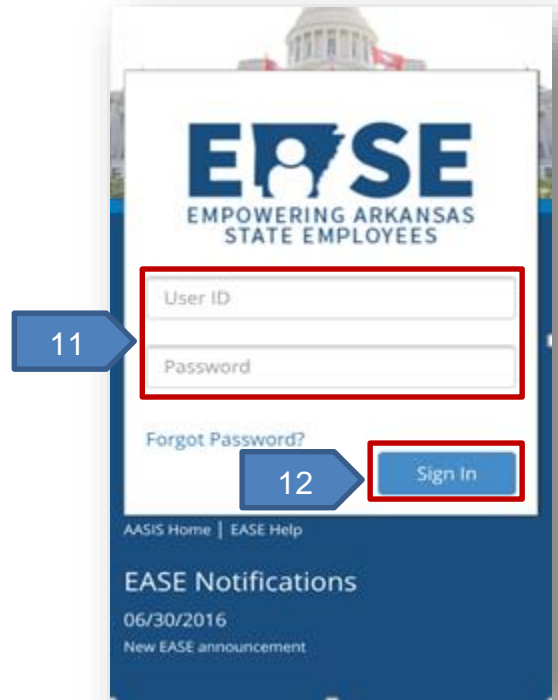
or

10. Click **Disable Passcode**.

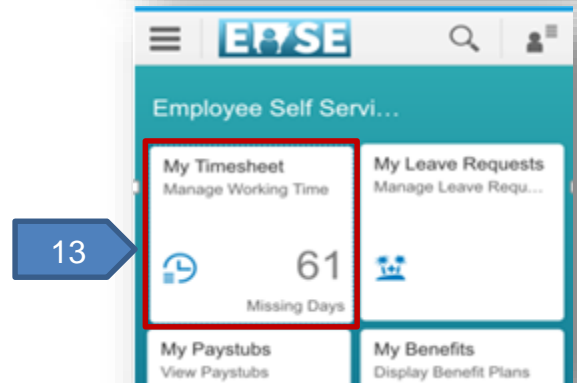


NOTE: If you receive a Tip screen, read and Click **Continue**.

- 11. Type your AASIS **User ID** and **Password**.
- 12. Click **Sign In**.



- 13. Click the desired application to perform your work tasks.
NOTE: Approving Managers will also have the My Inbox application.



- 14. Upon completion of EASE tasks using your mobile device, Click the user button.



- 15. Select **Log out**.

