

AR CORN & GRAIN SORGHUM PROMOTION BOARD

Enabling Laws

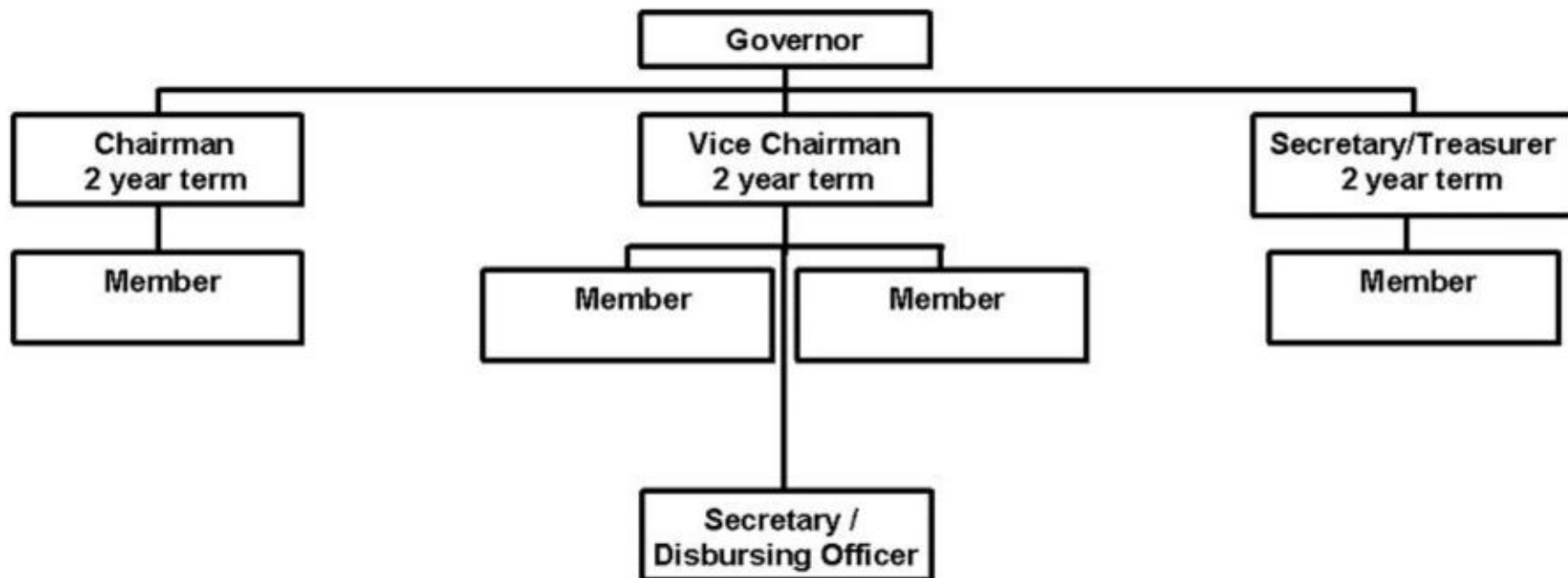
Act 145 of 2014
A.C.A. §2-20-804 et seq.

History and Organization

The Arkansas Corn and Grain Sorghum Board was created by Act 271 of 1997. Its mission is to promote the growth and development of the corn and grain sorghum industries in Arkansas by research, extension, promotion and market development, thereby promoting the general welfare of the people of Arkansas.

The Board is made up of seven members appointed by the Governor. Three are nominated by and represent the Arkansas Farm Bureau Federation, and two each are nominated by and represent Riceland Foods, Inc. and The Agriculture Council of Arkansas. The Board is administered by the Executive Vice President of Arkansas Farm Bureau Federation or his designee.

The Board administers a one cent per bushel assessment on all corn and grain sorghum grown in Arkansas for market. The funds enter the State Treasury, and are disbursed by the Board to fund corn and grain sorghum research and promotion efforts.



Agency Commentary

The Arkansas Corn and Grain Sorghum Board budget is funded entirely by special revenues collected from a one cent per bushel check off on all corn and grain sorghum produced in Arkansas for market. The Board is requesting Base Level appropriation of \$1,200,000.

An allocation of these special revenue funds will be used to fund corn and grain sorghum related research projects through the University of Arkansas and private research companies as the Board sees fit. Projects will be individually approved and monitored by the Board. The Board welcomes project proposals at their first quarter meeting.

Audit Findings

DIVISION OF LEGISLATIVE AUDIT
AUDIT OF :
ARKANSAS CORN AND GRAIN SORGHUM PROMOTION BOARD
FOR THE YEAR ENDED JUNE 30, 2012

Findings

None

Recommendations

None

State Contracts Over \$50,000 Awarded To Minority Owned Businesses Fiscal Year 2014

None

Publications

A.C.A. 25-1-201 et seq.

Name	Statutory Authorization	Required for		# of Copies	Reason(s) for Continued Publication and Distribution	Unbound Black & White Copies Produced During the Last Two Years	Cost of Unbound Copies Produced During the Last Two Years
		Governor	General Assembly				
None	N/A	N	N	0	N/A	0	0.00

Agency Position Usage Report

FY2012 - 2013						FY2013 - 2014						FY2014 - 2015					
Authorized in Act	Budgeted			Unbudgeted Total	% of Authorized Unused	Authorized in Act	Budgeted			Unbudgeted Total	% of Authorized Unused	Authorized in Act	Budgeted			Unbudgeted Total	% of Authorized Unused
	Filled	Unfilled	Total				Filled	Unfilled	Total				Filled	Unfilled	Total		
0	0	0	0	0	0.00 %	0	0	0	0	0	0.00 %	0	0	0	0	0	0.00 %

Analysis of Budget Request

Appropriation: 686 - Corn and Grain Sorghum

Funding Sources: SGS - AR Corn and Grain Sorghum Promotion Board Fund

The purpose of the Corn and Grain Sorghum Promotion Board is to promote the growth and development of the corn and grain sorghum industries in the State of Arkansas. The funds are primarily used to maintain a program of research through the University of Arkansas Agricultural Experiment Station and Cooperative Extension Service. A small portion is used for other programs designed to enhance the Arkansas corn and grain sorghum industries.

The Board is funded entirely by Special Revenues collected from a one cent per bushel assessment at the first point of sale or when the corn or grain sorghum enters the USDA loan program and is applicable to all corn and grain sorghum produced in Arkansas for market. The Board utilizes these funds to finance operating expenses and to conduct a program of research, market development and promotion.

The Agency Base Level Request includes appropriation of \$1.2 million each year of the biennium.

The Executive Recommendation provides for the Agency Request.

Appropriation Summary

Appropriation: 686 - Corn and Grain Sorghum

Funding Sources: SGS - AR Corn and Grain Sorghum Promotion Board Fund

Historical Data

Agency Request and Executive Recommendation

Commitment Item		2013-2014	2014-2015	2014-2015	2015-2016			2016-2017		
		Actual	Budget	Authorized	Base Level	Agency	Executive	Base Level	Agency	Executive
Operating Expenses	5020002	16,618	25,000	25,000	25,000	25,000	25,000	25,000	25,000	25,000
Conference & Travel Expenses	5050009	0	0	0	0	0	0	0	0	0
Professional Fees	5060010	0	0	0	0	0	0	0	0	0
Data Processing	5090012	0	0	0	0	0	0	0	0	0
Capital Outlay	5120011	0	0	0	0	0	0	0	0	0
Research/Development	5900031	917,366	1,175,000	1,175,000	1,175,000	1,175,000	1,175,000	1,175,000	1,175,000	1,175,000
Total		933,984	1,200,000	1,200,000	1,200,000	1,200,000	1,200,000	1,200,000	1,200,000	1,200,000
Funding Sources										
Fund Balance	4000005	298,595	841,925		1,141,925	1,141,925	1,141,925	1,441,925	1,441,925	1,441,925
Special Revenue	4000030	1,477,314	1,500,000		1,500,000	1,500,000	1,500,000	1,500,000	1,500,000	1,500,000
Total Funding		1,775,909	2,341,925		2,641,925	2,641,925	2,641,925	2,941,925	2,941,925	2,941,925
Excess Appropriation/(Funding)		(841,925)	(1,141,925)		(1,441,925)	(1,441,925)	(1,441,925)	(1,741,925)	(1,741,925)	(1,741,925)
Grand Total		933,984	1,200,000		1,200,000	1,200,000	1,200,000	1,200,000	1,200,000	1,200,000