

GOVERNOR'S MANSION COMMISSION

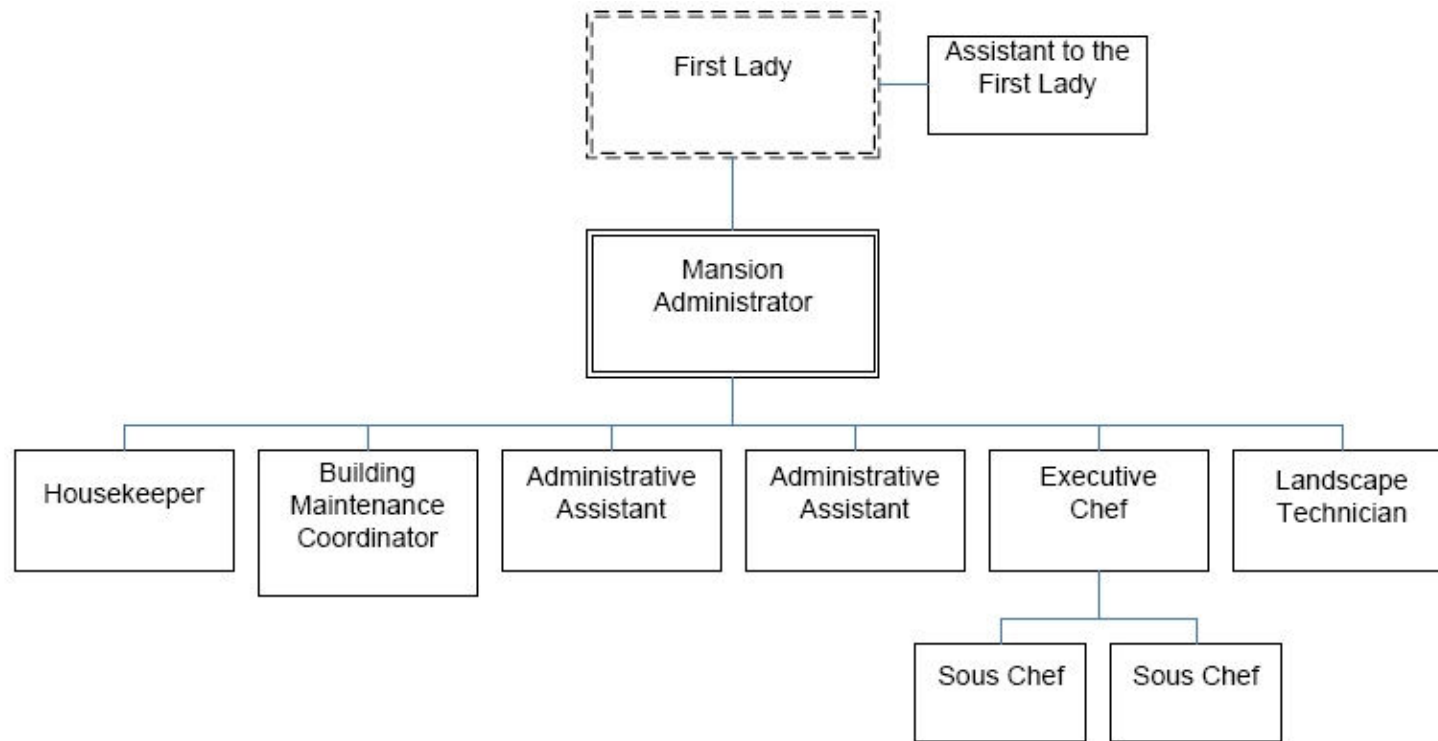
Enabling Laws

Act 71 of 2010
ACA §22-3-801

History and Organization

In accordance with ACA §22-3-801, the State of Arkansas shall furnish its Governor a mansion to live in during the term of office. The Governor's Mansion Commission is composed of eight members appointed by the Governor and is assisted by the Mansion Advisory Council. The Advisory Council is composed of three members of the Senate and House of Representatives. The duties and powers of the Commission are:

- To survey the condition of the Mansion, grounds and contents;
- To establish rules and regulations governing improvements, repairs, etc for the Mansion, grounds and contents;
- To prepare an annual report each November for the Governor and Legislative Council summarizing its findings and recommendations of necessary repairs, improvements, etc.
- To solicit and accept gifts, grants and donations for use in purchasing furnishings, plantings and artwork, etc. All gifts must be approved by the Governor and the Commission.



Agency Commentary

The Governor's Mansion Commission is currently authorized ten (10) full time positions and four (4) Extra Help positions. The Extra Help, Uniform Allowance, Mansion Allowance, and Mansion Expense line items are requested at Base Level for the 2011-2013 biennium. The Base Level salary of unclassified positions reflects the FY11 line item maximum.

Audit Findings

DIVISION OF LEGISLATIVE AUDIT
AUDIT OF :
GOVERNOR'S MANSION AND MANSION COMMISSION
FOR THE YEAR ENDED JUNE 30, 2009

Findings	Recommendations
None	None

Employment Summary

	Male	Female	Total	%
White Employees	4	3	7	88 %
Black Employees	0	0	0	0 %
Other Racial Minorities	1	0	1	12 %
Total Minorities			1	12 %
Total Employees			8	100 %

Publications

A.C.A. 25-1-204

Name	Statutory Authorization	Required for		# of Copies	Reason(s) for Continued Publication and Distribution
		Governor	General Assembly		
N/A	N/A	N	N	0	N/A

Department Appropriation Summary

Historical Data						Agency Request and Executive Recommendation													
Appropriation		2009-2010		2010-2011		2010-2011		2011-2012						2012-2013					
		Actual	Pos	Budget	Pos	Authorized	Pos	Base Level	Pos	Agency	Pos	Executive	Pos	Base Level	Pos	Agency	Pos	Executive	Pos
532	Governor's Mansion - Operations	754,732	9	1,041,554	10	1,068,700	10	1,055,399	10	1,055,399	10	0	0	1,055,399	10	1,055,399	10	0	0
56V	Grand Hall/Mansion/Grounds - Cash in Treasury	325,001	0	500,000	0	500,000	0	500,000	0	500,000	0	0	0	500,000	0	500,000	0	0	0
Total		1,079,733	9	1,541,554	10	1,568,700	10	1,555,399	10	1,555,399	10	0	0	1,555,399	10	1,555,399	10	0	0

Funding Sources			%		%			%		%		%		%		%		%
Fund Balance	4000005	0	0.0	44,903	2.8		44,903	2.8	44,903	2.8	0	0.0	44,903	2.8	44,903	2.8	0	0.0
State Central Services	4000035	754,732	67.1	1,041,554	65.7		1,055,399	65.9	1,055,399	65.9	0	0.0	1,055,399	65.9	1,055,399	65.9	0	0.0
Cash Fund	4000045	369,904	32.9	500,000	31.5		500,000	31.2	500,000	31.2	0	0.0	500,000	31.2	500,000	31.2	0	0.0
Total Funds		1,124,636	100.0	1,586,457	100.0		1,600,302	100.0	1,600,302	100.0	0	0.0	1,600,302	100.0	1,600,302	100.0	0	0.0
Excess Appropriation/(Funding)		(44,903)		(44,903)			(44,903)		(44,903)		0		(44,903)		(44,903)		0	
Grand Total		1,079,733		1,541,554			1,555,399		1,555,399		0		1,555,399		1,555,399		0	

No Executive Recommendation made on these appropriations.

Agency Position Usage Report

FY2008 - 2009						FY2009 - 2010						FY2010 - 2011					
Authorized in Act	Budgeted			Unbudgeted Total	% of Authorized Unused	Authorized in Act	Budgeted			Unbudgeted Total	% of Authorized Unused	Authorized in Act	Budgeted			Unbudgeted Total	% of Authorized Unused
	Filled	Unfilled	Total				Filled	Unfilled	Total				Filled	Unfilled	Total		
10	8	2	10	0	20.00 %	10	9	1	10	0	10.00 %	10	9	1	10	0	10.00 %

Appropriation Summary

Appropriation: 532 - Governor's Mansion - Operations

Funding Sources: HSC - State Central Services

Historical Data

Agency Request and Executive Recommendation

Commitment Item		2009-2010	2010-2011	2010-2011	2011-2012			2012-2013		
		Actual	Budget	Authorized	Base Level	Agency	Executive	Base Level	Agency	Executive
Regular Salaries	5010000	398,171	516,199	528,053	527,456	527,456	0	527,456	527,456	0
#Positions		9	10	10	10	10	0	10	10	0
Extra Help	5010001	4,960	12,000	12,000	12,000	12,000	0	12,000	12,000	0
#Extra Help		1	4	4	4	4	0	4	4	0
Personal Services Matching	5010003	120,568	151,525	166,817	154,113	154,113	0	154,113	154,113	0
Uniform Allowance	5010016	500	500	500	500	500	0	500	500	0
Gov Mansion Allowance	5900046	18,000	60,000	60,000	60,000	60,000	0	60,000	60,000	0
Mansion Expense	5900047	212,533	301,330	301,330	301,330	301,330	0	301,330	301,330	0
Total		754,732	1,041,554	1,068,700	1,055,399	1,055,399	0	1,055,399	1,055,399	0
Funding Sources										
State Central Services	4000035	754,732	1,041,554		1,055,399	1,055,399	0	1,055,399	1,055,399	0
Total Funding		754,732	1,041,554		1,055,399	1,055,399	0	1,055,399	1,055,399	0
Excess Appropriation/(Funding)		0	0		0	0	0	0	0	0
Grand Total		754,732	1,041,554		1,055,399	1,055,399	0	1,055,399	1,055,399	0

No Executive Recommendation made on this appropriation.

Appropriation Summary

Appropriation: 56V - Grand Hall/Mansion/Grounds - Cash in Treasury

Funding Sources: NGM - Governor's Mansion Grand Hall - Cash in Treasury

Historical Data

Agency Request and Executive Recommendation

Commitment Item	2009-2010	2010-2011	2010-2011	2011-2012			2012-2013		
	Actual	Budget	Authorized	Base Level	Agency	Executive	Base Level	Agency	Executive
Grand Hall/Mansion/Grounds Exp 5900046	325,001	500,000	500,000	500,000	500,000	0	500,000	500,000	0
Total	325,001	500,000	500,000	500,000	500,000	0	500,000	500,000	0
Funding Sources									
Fund Balance 4000005	0	44,903		44,903	44,903	0	44,903	44,903	0
Cash Fund 4000045	369,904	500,000		500,000	500,000	0	500,000	500,000	0
Total Funding	369,904	544,903		544,903	544,903	0	544,903	544,903	0
Excess Appropriation/(Funding)	(44,903)	(44,903)		(44,903)	(44,903)	0	(44,903)	(44,903)	0
Grand Total	325,001	500,000		500,000	500,000	0	500,000	500,000	0

No Executive Recommendation made on this appropriation.