

# ARKANSAS GEOLOGICAL SURVEY

## **Enabling Laws**

Act 139 of 2010  
A.C.A. §15-55-201, et seq.

## **History and Organization**

The first geologic surveys made from State-appropriated funds go back to 1857-60. A second survey was made from 1871-74. In 1881, the Geological Survey of Arkansas was established under the direction of Dr. John C. Branner and lasted until 1893. During this period, Herbert Clark Hoover, who later became President of the United States, assisted Dr. Branner. For the next 30 years, the Department of Geology conducted a few geologic surveys at the University of Arkansas. In 1923 the Geological Survey of Arkansas was once again established by Act 573 of 1923 under the direction of George C. Branner, the son of John Branner. In 1945, reorganization changed the agency name to the Arkansas Resources and Development Commission, Division of Geology, under the direction of Harold B. Foxhall. From 1951 to 1995 Norman F. Williams was Director and State Geologist. Reorganization in 1955 established the agency as the Arkansas Geological and Conservation Commission. Act 16 of 1963 changed the name of the organization to the Arkansas Geological Commission. In 1995, William V. Bush became Director and State Geologist. In 2003, Mac B. Woodward was appointed Director and State Geologist. In January 2005 Bekki White was appointed Director and State Geologist. Act 129 of 2007 changed the agency name back to Arkansas Geological Survey.

The mission of the Arkansas Geological Survey is to increase the knowledge of the geology of the State, to stimulate the orderly development and utilization of the State's mineral, water, and fossil fuel resources, while protecting the environment.

The Arkansas Geological Survey (AGS) is organized into three sections: Administrative Services, Information Services, and Technical Services, all of which are under the direct supervision of the State Geologist.

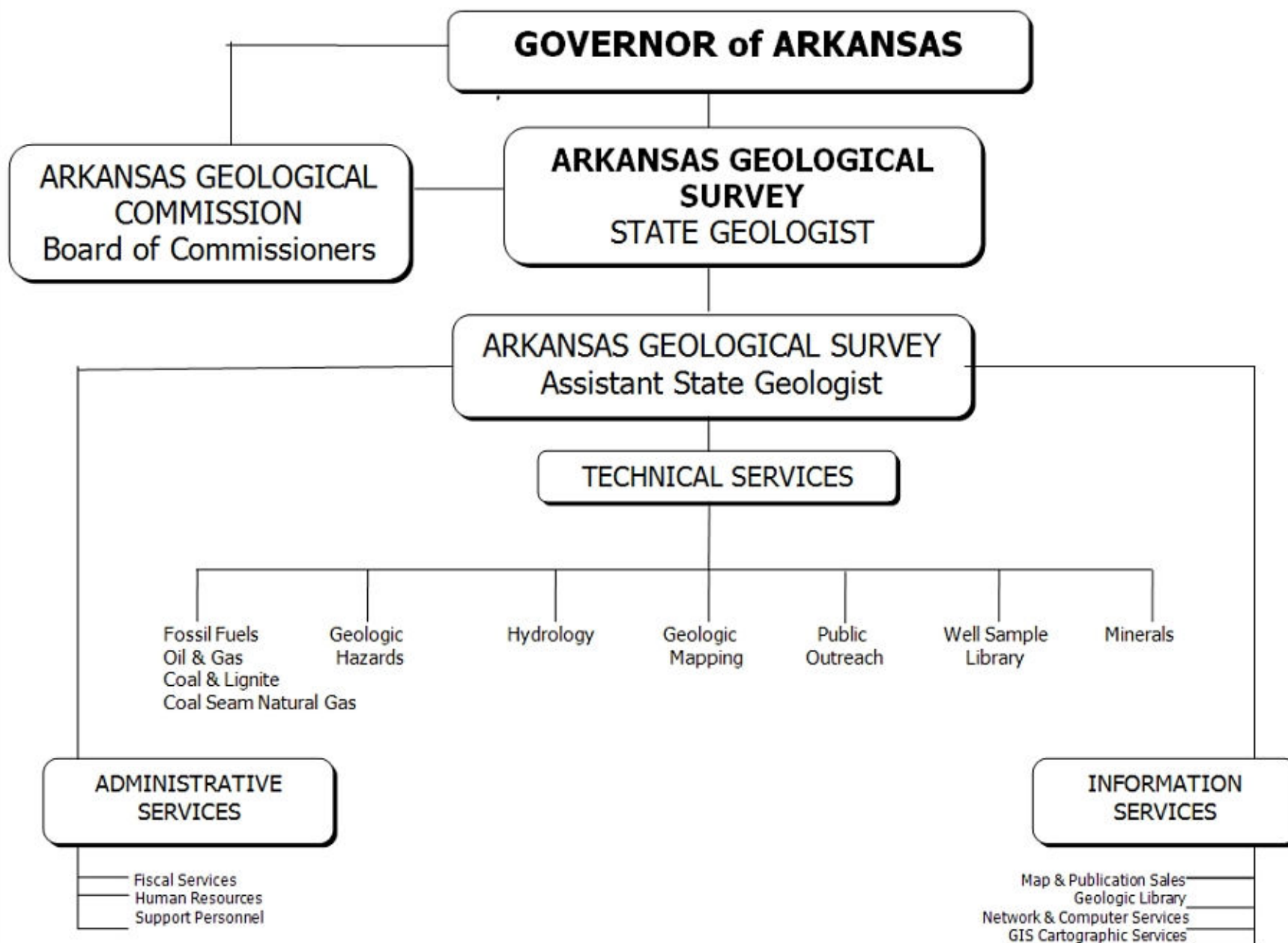
The Administrative Services Section consists of fiscal services, human resources and support personnel services. This section provides all the administrative support for the agency.

The Information Services Section's primary function is the distribution of information prepared and maintained by the Technical Services Section. This is accomplished through four offices: Map and Publication Sales, Geological Library, Network & Computer Services and GIS Cartographic Services.

The Technical Services Section is composed of the geologic staff and technical support personnel. Its primary responsibilities are: 1) to search for and provide information on the State's mineral, fossil-fuel (coal, oil and gas), and water resources; 2) to encourage the orderly development of these resources; 3) to maintain current geologic map coverage of the State; and 4) to study and report on the geologic factors affecting the State's environment.

Technical Services is divided into six major activities: Fossil Fuels (oil & gas, lignites & coals); Geohazards (earthquakes, landslides, karst); Hydrology; Geologic Mapping (surface, subsurface); and Public Outreach Minerals (Industrial, metallic, non-metallic). Also under this section is the Well Sample Library.

In addition to the major activities in the Geological Services Section, the Agency has several cooperative projects with the US Geological Survey (USGS). The AGS has three cooperative programs with the Water Resources Division of the USGS: Groundwater Survey Program, Stream Gauging Program (surface water), and Water Quality Program. Each of these is a 50-50 cooperative program in which the costs are split, but with the majority of the work being done by USGS personnel using their equipment and facilities. These programs provide base-line water data to the public and other users of water data needed in management and protection activities. The selection of sample sites is coordinated with other government agencies that collect water data, in order to eliminate duplication and establish site selection priorities in strategic areas for the public welfare.



## **Agency Commentary**

The Arkansas Geological Survey (AGS) was created by Act 16 of 1963. Agency activities are divided into three major sections: 1) Administrative Services, 2) Technical Services, and 3) Information Services. Activities are primarily supported by General Revenue Funds, except Map and Publication Sales which operate on a revolving cash fund, the Geology Learning Center, which is funded by donations. There are several federally grant funded programs which operate under miscellaneous federal grants. In May 2008, a donation by the State Farm Insurance Group enabled the formation of an Earthquake Education and Outreach Program. This program conducted a series of town hall meetings across the state to present "Earthquake 101"; an educational program designed for the citizen/layman. The Arkansas Geological Survey participates in cooperative (matching at 50/50) water programs with the United States Geological Survey.

**The Administrative Services Section** supports the AGS with fiscal services, human resources and personnel services. This section provides all the administrative support for the agency as well as physical plant and vehicle maintenance.

The Agency request is for Base Level.

**The Technical Services Section** is composed of the geologic staff and technical support personnel. Its primary responsibilities are: 1) to search for and provide information on the State's mineral, fossil-fuel, and water resources; 2) to encourage the orderly development of these resources; 3) to maintain current geologic map coverage of the State; and 4) to study and report on the geologic factors affecting the State's environment.

Technical Services is divided into six major activities: Fossil Fuels (oil & gas, lignites & coals); Geohazards (earthquakes, landslides, karst); Minerals (Industrial, metallic, non-metallic); Hydrology; Geologic Mapping (surface, subsurface); and Public Outreach (Outreach efforts such as the Geology Learning Center fall under this Section but is not an official program).

Current geologic map coverage of the State is maintained and other geologic studies are conducted as needed. The geologic information compiled and maintained for these investigations is necessary for exploration, development, planning and protection for the mineral resources base of Arkansas and as the framework for numerous environmental studies. A technical support group assists the geologic staff in collecting, evaluating and preparing geologic data.

The Agency request is for Base Level.

**The Information Services Section's** primary functions are preparation, storage and distribution of data, reports, and maps prepared and maintained by the Geological Services Section. This is accomplished through the Map and Publication Sales Office, Geological Library, and

Network and Computer Services. With the increasing demand for maps in digital format, we are, in an orderly fashion, digitizing the geology of Arkansas.

The Arkansas Geological Survey is the repository of geologic and mineral information collected for more than 150 years. Most of this information is in a paper format. A data archival system is being established to provide for the storage, preservation, and archival of subsurface and surface geological data, samples and publications. This information will provide a "catalogue" of AGS information that would be easily accessible. The purpose of this program is to insure that this data is preserved for future generations of Arkansas citizens.

The Agency request is for Base Level.

The AGS has three **Cooperative Programs with the U.S. Geological Survey** (USGS) Water Resources Division. These cooperative programs with the U.S. Geological Survey's Water Resources Division includes 1) Stream Gauging Program (surface water), 2) Water Quality Program, and 3) Ground Water Survey. These programs provide for collection, evaluation and development of data relating to the State's surface and ground water resources. Information from these programs is important to the development and protection of the State's water supply and is critical to the agencies that regulate and manage the State's water resources. Specifically, these funds are used to collect and analyze surface and ground water samples (Water Quality Program); installation and monitoring of continuous-record stream gauging stations (Stream Gauging Program); and research in subsurface geology relating to ground water (Ground Water Survey). The Ground Water Survey will include regular water-level measurements of wells in the critical Sparta Aquifer in south Arkansas and the Quaternary Aquifer in east Arkansas.

The Agency request is for Base Level.

**MAP RE-SALE**-The Map Re-sale appropriation provides for the authorization to operate from a revolving cash fund, using a portion of the money collected from the sale of maps, publications and reproduction charges.

The Agency request is for Base Level.

**STATE GEOLOGIC MAPPING PROGRAM** - Federal funds from the Department of Interior and Department of Energy will be received during the biennium for geologic mapping and data collection. There is no request for appropriation beyond Base Level.

US Geological Survey (USGS) funds for **STATEMAP (State Geologic Mapping Program)** pay the salary of one field geologist and an extra help position to conduct geologic field studies and mapping in Arkansas. The program involves the geologic mapping of areas of the state selected by the Commission. This is a cooperative effort between the AGS and the USGS and is part of the National Geologic Mapping effort to standardize the quality of geologic mapping in the United States. This project will aid in the development and management of the mineral resources of the area and greatly expand the knowledge of the geology of the State.

The USGS will continue to fund the **National Coal Resources Data System (NCRDS)** project through both years of the biennium. NCRDS is a grant to collect, interpret, correlate and encode point-source coal and other energy-related stratigraphic data for entry into NCRDS, as well as validation, editing, and updating all data submitted to U. S. Geological Survey and the NCRDS Program.

**The National Park Service (NPS)** - provides funds for geologic mapping of three national parks Arkansas (Hot Springs National Park, Buffalo National River, and Arkansas Post National Memorial). This grant will produce a digital geologic map, defined as a map that depicts the geographic distribution at the Earth's surface of bedrock and/or surficial geologic materials and structures, on a published base map showing topography, hydrography, culture, cadastral, and other base information.

The Arkansas Geological Survey is a member of a coalition of all 50 state geological surveys participating in a **Geothermal Grant awarded by the Department of Energy (DOE)**. This \$17.9 million dollar grant will allow the state surveys to populate a new National Geothermal Data System with state-specific geothermal data to identify, assess and exploit geothermal energy resources across Arkansas and the United States. This data will become available on the web. This effort is part of a national effort to exploit renewable energy resources that would help reduce greenhouse gas emissions. The Arkansas Geological Survey expects a substantial grant award but does not project that a request for additional appropriation is necessary.

#### **LIGNITE RESOURCES-FEDERAL**

\$3,000,000 in appropriation was granted during the last biennium in anticipation of federal funding for lignite research, however, no federal funds were allocated for lignite research. The Agency is requesting to discontinue the Lignite Resources-Federal appropriation.

#### **MUSEUM EXPENSES (GEOLOGY LEARNING CENTER) - CASH**

This appropriation provides for the authorization to spend money donated to the AGS Geology Learning Center (GLC). The GLC is part of the educational arm of the agency with the purpose of giving student and citizens of all ages' exposure to rocks, minerals, fossils, and fossil fuels. The GLC has 5 display areas and receives funding and exhibit material from donations.

The Agency request is for Base Level.

## Employment Summary

	Male	Female	Total	%
White Employees	17	8	25	93 %
Black Employees	0	1	1	4 %
Other Racial Minorities	1	0	1	3 %
Total Minorities			2	7 %
Total Employees			27	100 %

## Publications

### A.C.A. 25-1-204

Name	Statutory Authorization	Required for		# of Copies	Reason(s) for Continued Publication and Distribution
		Governor	General Assembly		
None	N/A	N	N	0	N/A

## Department Appropriation Summary

### Historical Data

### Agency Request and Executive Recommendation

Appropriation		2009-2010		2010-2011		2010-2011		2011-2012						2012-2013					
		Actual	Pos	Budget	Pos	Authorized	Pos	Base Level	Pos	Agency	Pos	Executive	Pos	Base Level	Pos	Agency	Pos	Executive	Pos
166	State Operations	1,942,983	27	2,003,060	27	2,039,060	27	2,016,196	27	2,016,196	27	2,016,196	27	2,016,196	27	2,016,196	27	2,016,196	27
169	Map Resale	9,323	0	100,000	0	100,000	0	100,000	0	100,000	0	100,000	0	100,000	0	100,000	0	100,000	0
210	State Geologic Mapping Program	148,237	2	1,052,885	2	1,112,066	3	1,054,508	2	1,054,508	2	1,054,508	2	1,054,508	2	1,054,508	2	1,054,508	2
54U	State Farm Grant	329	0	36,000	0	36,000	0	36,000	0	36,000	0	36,000	0	36,000	0	36,000	0	36,000	0
83H	Lignite Resources-Federal	0	0	3,000,000	0	3,000,000	0	3,000,000	0	0	0	0	0	3,000,000	0	0	0	0	0
873	Geology Museum	0	0	9,025	0	9,025	0	9,025	0	9,025	0	9,025	0	9,025	0	9,025	0	9,025	0
Total		2,100,872	29	6,200,970	29	6,296,151	30	6,215,729	29	3,215,729	29	3,215,729	29	6,215,729	29	3,215,729	29	3,215,729	29

Funding Sources			%		%			%		%		%		%		%		%
Fund Balance	4000005	52,650	2.4	68,934	1.1		68,934	2.1	68,934	2.1	68,934	2.1	68,934	2.1	68,934	2.1	68,934	2.1
General Revenue	4000010	1,942,983	89.5	2,003,060	31.9		2,016,196	61.4	2,016,196	61.4	2,016,196	61.4	2,016,196	61.4	2,016,196	61.4	2,016,196	61.4
Federal Revenue	4000020	148,237	6.8	4,052,885	64.6		1,054,508	32.1	1,054,508	32.1	1,054,508	32.1	1,054,508	32.1	1,054,508	32.1	1,054,508	32.1
Non-Revenue Receipts	4000040	25,780	1.2	100,000	1.6		100,000	3.0	100,000	3.0	100,000	3.0	100,000	3.0	100,000	3.0	100,000	3.0
Cash Fund	4000045	29	0.0	45,025	0.7		45,025	1.4	45,025	1.4	45,025	1.4	45,025	1.4	45,025	1.4	45,025	1.4
Interest	4000300	127	0.0	0	0.0		0	0.0	0	0.0	0	0.0	0	0.0	0	0.0	0	0.0
Total Funds		2,169,806	100.0	6,269,904	100.0		3,284,663	100.0	3,284,663	100.0	3,284,663	100.0	3,284,663	100.0	3,284,663	100.0	3,284,663	100.0
Excess Appropriation/(Funding)		(68,934)		(68,934)			2,931,066		(68,934)		(68,934)		2,931,066		(68,934)		(68,934)	
Grand Total		2,100,872		6,200,970			6,215,729		3,215,729		3,215,729		6,215,729		3,215,729		3,215,729	

Variance in fund balances due to unfunded appropriation in (83H) Lignite Resources-Federal.



## Agency Position Usage Report

FY2008 - 2009						FY2009 - 2010						FY2010 - 2011					
Authorized in Act	Budgeted			Unbudgeted Total	% of Authorized Unused	Authorized in Act	Budgeted			Unbudgeted Total	% of Authorized Unused	Authorized in Act	Budgeted			Unbudgeted Total	% of Authorized Unused
	Filled	Unfilled	Total				Filled	Unfilled	Total				Filled	Unfilled	Total		
25	26	0	26	-1	-4.00 %	30	27	3	30	0	10.00 %	30	27	2	29	1	10.00 %

FY09 Budget Number of Positions exceeds the Authorized Number due to the approval of a Miscellaneous Federal Grant position.

## **Analysis of Budget Request**

**Appropriation:** 166 - State Operations

**Funding Sources:** HUA - Miscellaneous Agencies Fund

The Arkansas Geological Survey's (AGS) appropriation for State Operations is funded entirely by general revenue. In this program, data is accumulated, analyzed, and disseminated to provide knowledge of the geology and hydrogeology of the State to stimulate orderly development and encourage effective management and utilization of the State's minerals, fossil fuels, and water resources in an environmentally responsible manner.

Base Level salaries and matching do not include appropriation for a Cost of Living Adjustment or Career Service Payments. The Base Level salary of the unclassified position reflects the FY11 line item maximum.

The Agency Request is for Base Level of \$2,016,196 each year.

The Executive Recommendation provides for the Agency Request.

## Appropriation Summary

**Appropriation:** 166 - State Operations  
**Funding Sources:** HUA - Miscellaneous Agencies Fund

### Historical Data

### Agency Request and Executive Recommendation

Commitment Item		2009-2010	2010-2011	2010-2011	2011-2012			2012-2013		
		Actual	Budget	Authorized	Base Level	Agency	Executive	Base Level	Agency	Executive
Regular Salaries	5010000	1,221,747	1,282,649	1,259,614	1,278,309	1,278,309	1,278,309	1,278,309	1,278,309	1,278,309
<b>#Positions</b>		<b>27</b>	<b>27</b>	<b>27</b>	<b>27</b>	<b>27</b>	<b>27</b>	<b>27</b>	<b>27</b>	<b>27</b>
Extra Help	5010001	11,708	12,000	12,000	12,000	12,000	12,000	12,000	12,000	12,000
<b>#Extra Help</b>		<b>3</b>	<b>19</b>	<b>19</b>	<b>19</b>	<b>19</b>	<b>19</b>	<b>19</b>	<b>19</b>	<b>19</b>
Personal Services Matching	5010003	346,280	367,463	399,044	384,939	384,939	384,939	384,939	384,939	384,939
Operating Expenses	5020002	203,387	207,791	207,791	207,791	207,791	207,791	207,791	207,791	207,791
Conference & Travel Expenses	5050009	3,295	4,000	4,000	4,000	4,000	4,000	4,000	4,000	4,000
Professional Fees	5060010	0	6,000	6,000	6,000	6,000	6,000	6,000	6,000	6,000
Data Processing	5090012	0	0	0	0	0	0	0	0	0
Capital Outlay	5120011	5,955	0	0	0	0	0	0	0	0
Water Quality Program	5900046	31,855	26,000	31,855	26,000	26,000	26,000	26,000	26,000	26,000
Stream Gauging	5900047	38,300	28,655	38,300	28,655	28,655	28,655	28,655	28,655	28,655
Ground Water Survey	5900048	54,456	42,502	54,456	42,502	42,502	42,502	42,502	42,502	42,502
Mineral Exploration	5900050	26,000	26,000	26,000	26,000	26,000	26,000	26,000	26,000	26,000
<b>Total</b>		<b>1,942,983</b>	<b>2,003,060</b>	<b>2,039,060</b>	<b>2,016,196</b>	<b>2,016,196</b>	<b>2,016,196</b>	<b>2,016,196</b>	<b>2,016,196</b>	<b>2,016,196</b>
<b>Funding Sources</b>										
General Revenue	4000010	1,942,983	2,003,060		2,016,196	2,016,196	2,016,196	2,016,196	2,016,196	2,016,196
Total Funding		1,942,983	2,003,060		2,016,196	2,016,196	2,016,196	2,016,196	2,016,196	2,016,196
Excess Appropriation/(Funding)		0	0		0	0	0	0	0	0
<b>Grand Total</b>		<b>1,942,983</b>	<b>2,003,060</b>		<b>2,016,196</b>	<b>2,016,196</b>	<b>2,016,196</b>	<b>2,016,196</b>	<b>2,016,196</b>	<b>2,016,196</b>

The FY11 Budget amount in Regular Salaries exceeds the authorized amount due to salary rate adjustments during the 2009-2011 biennium.

## **Analysis of Budget Request**

**Appropriation:** 169 - Map Resale

**Funding Sources:** MWA - Geology Map Resale Revolving Fund

The Arkansas Geological Survey utilizes this appropriation to operate a Map Resale Program. Funding for the Arkansas Geological Survey's Map Resale appropriation is obtained from the sale of geological and topographical maps to the general public. These proceeds are deposited into the Agency's revolving fund, as authorized in A.C.A. §19-4-1804.

The Agency Request is for Base Level of \$100,000 each year.

The Executive Recommendation provides for the Agency Request.

## Appropriation Summary

**Appropriation:** 169 - Map Resale

**Funding Sources:** MWA - Geology Map Resale Revolving Fund

### Historical Data

### Agency Request and Executive Recommendation

Commitment Item		2009-2010	2010-2011	2010-2011	2011-2012			2012-2013		
		Actual	Budget	Authorized	Base Level	Agency	Executive	Base Level	Agency	Executive
Resale Revolving Fund	5900046	9,323	100,000	100,000	100,000	100,000	100,000	100,000	100,000	100,000
Total		9,323	100,000	100,000	100,000	100,000	100,000	100,000	100,000	100,000
<b>Funding Sources</b>										
Fund Balance	4000005	44,661	61,118		61,118	61,118	61,118	61,118	61,118	61,118
Non-Revenue Receipts	4000040	25,780	100,000		100,000	100,000	100,000	100,000	100,000	100,000
Total Funding		70,441	161,118		161,118	161,118	161,118	161,118	161,118	161,118
Excess Appropriation/(Funding)		(61,118)	(61,118)		(61,118)	(61,118)	(61,118)	(61,118)	(61,118)	(61,118)
Grand Total		9,323	100,000		100,000	100,000	100,000	100,000	100,000	100,000

## **Analysis of Budget Request**

**Appropriation:** 210 - State Geologic Mapping Program

**Funding Sources:** FAL - Geology Federal

The Arkansas Geological Survey (AGS) utilizes this appropriation for the federal portion of the following program activities: National Coal Resources Data System (NCRDS) project to collect, interpret, correlate and encode point-source coal and other energy-related stratigraphic data; National Park Service (NPS) project for geologic mapping of three (3) national parks in Arkansas: Hot Springs National Park, Buffalo National River, and Arkansas Post National Memorial; and the State Geologic Mapping Program to coordinate collection of data and formulation of maps displaying the location and quantity of minerals in specific areas of the State. Federal funding is received from the US Department of Energy and the US Department of Interior.

Base Level salaries and matching do not include appropriation for a Cost of Living Adjustment or Career Service Payments.

The Agency Request is for Base Level of \$1,054,508 each year.

The Executive Recommendation provides for the Agency Request.

## Appropriation Summary

**Appropriation:** 210 - State Geologic Mapping Program

**Funding Sources:** FAL - Geology Federal

### Historical Data

### Agency Request and Executive Recommendation

Commitment Item		2009-2010	2010-2011	2010-2011	2011-2012			2012-2013		
		Actual	Budget	Authorized	Base Level	Agency	Executive	Base Level	Agency	Executive
Regular Salaries	5010000	75,071	76,062	111,948	77,370	77,370	77,370	77,370	77,370	77,370
<b>#Positions</b>		<b>2</b>	<b>2</b>	<b>3</b>	<b>2</b>	<b>2</b>	<b>2</b>	<b>2</b>	<b>2</b>	<b>2</b>
Extra Help	5010001	19,438	11,591	20,030	11,591	11,591	11,591	11,591	11,591	11,591
<b>#Extra Help</b>		<b>2</b>	<b>3</b>	<b>3</b>	<b>3</b>	<b>3</b>	<b>3</b>	<b>3</b>	<b>3</b>	<b>3</b>
Personal Services Matching	5010003	26,776	25,543	40,399	25,858	25,858	25,858	25,858	25,858	25,858
Operating Expenses	5020002	26,952	939,689	939,689	939,689	939,689	939,689	939,689	939,689	939,689
Conference & Travel Expenses	5050009	0	0	0	0	0	0	0	0	0
Professional Fees	5060010	0	0	0	0	0	0	0	0	0
Data Processing	5090012	0	0	0	0	0	0	0	0	0
Capital Outlay	5120011	0	0	0	0	0	0	0	0	0
<b>Total</b>		<b>148,237</b>	<b>1,052,885</b>	<b>1,112,066</b>	<b>1,054,508</b>	<b>1,054,508</b>	<b>1,054,508</b>	<b>1,054,508</b>	<b>1,054,508</b>	<b>1,054,508</b>
<b>Funding Sources</b>										
Federal Revenue	4000020	148,237	1,052,885		1,054,508	1,054,508	1,054,508	1,054,508	1,054,508	1,054,508
Total Funding		148,237	1,052,885		1,054,508	1,054,508	1,054,508	1,054,508	1,054,508	1,054,508
Excess Appropriation/(Funding)		0	0		0	0	0	0	0	0
<b>Grand Total</b>		<b>148,237</b>	<b>1,052,885</b>		<b>1,054,508</b>	<b>1,054,508</b>	<b>1,054,508</b>	<b>1,054,508</b>	<b>1,054,508</b>	<b>1,054,508</b>

## **Analysis of Budget Request**

**Appropriation:** 54U - State Farm Grant

**Funding Sources:** NGC - Geology Private Grants

The State Farm Grant is a privately funded grant donated by State Farm in order to increase earthquake awareness throughout the State. The appropriation provides outreach to the citizens of the State in the form of town hall meetings. In these meetings a geologist will give a presentation on earthquake basics and preparedness techniques.

The Agency Request is for Base Level of \$36,000 each year.

The Executive Recommendation provides for the Agency Request. Expenditure of appropriation is contingent upon available funding.



## Appropriation Summary

**Appropriation:** 54U - State Farm Grant

**Funding Sources:** NGC - Geology Private Grants

### Historical Data

### Agency Request and Executive Recommendation

Commitment Item		2009-2010	2010-2011	2010-2011	2011-2012			2012-2013		
		Actual	Budget	Authorized	Base Level	Agency	Executive	Base Level	Agency	Executive
Operating Expenses	5020002	329	36,000	36,000	36,000	36,000	36,000	36,000	36,000	36,000
Conference & Travel Expenses	5050009	0	0	0	0	0	0	0	0	0
Professional Fees	5060010	0	0	0	0	0	0	0	0	0
Data Processing	5090012	0	0	0	0	0	0	0	0	0
Capital Outlay	5120011	0	0	0	0	0	0	0	0	0
Total		329	36,000	36,000	36,000	36,000	36,000	36,000	36,000	36,000
<b>Funding Sources</b>										
Fund Balance	4000005	7,002	6,800		6,800	6,800	6,800	6,800	6,800	6,800
Cash Fund	4000045	0	36,000		36,000	36,000	36,000	36,000	36,000	36,000
Interest	4000300	127	0		0	0	0	0	0	0
Total Funding		7,129	42,800		42,800	42,800	42,800	42,800	42,800	42,800
Excess Appropriation/(Funding)		(6,800)	(6,800)		(6,800)	(6,800)	(6,800)	(6,800)	(6,800)	(6,800)
Grand Total		329	36,000		36,000	36,000	36,000	36,000	36,000	36,000

## **Analysis of Budget Request**

**Appropriation:** 83H - Lignite Resources-Federal

**Funding Sources:** FAL - Geology Federal

This appropriation was created by Act 264 of 2010 to provide spending authorization to establish the Arkansas Lignite Resources Pilot Program for research and commercial testing of Arkansas' lignite resources. Initially, federal funds were anticipated to fund this program; however no federal funds were allocated for lignite research.

Due to the lack of funding, the Agency is requesting to discontinue the Lignite Resources-Federal appropriation for the 2011-2013 biennium.

The Executive Recommendation provides for the Agency Request.

## Appropriation Summary

**Appropriation:** 83H - Lignite Resources-Federal

**Funding Sources:** FAL - Geology Federal

### Historical Data

### Agency Request and Executive Recommendation

Commitment Item	2009-2010	2010-2011	2010-2011	2011-2012			2012-2013		
	Actual	Budget	Authorized	Base Level	Agency	Executive	Base Level	Agency	Executive
Lignite Resources Program Expen 5900046	0	3,000,000	3,000,000	3,000,000	0	0	3,000,000	0	0
Total	0	3,000,000	3,000,000	3,000,000	0	0	3,000,000	0	0
<b>Funding Sources</b>									
Federal Revenue 4000020	0	3,000,000		0	0	0	0	0	0
Total Funding	0	3,000,000		0	0	0	0	0	0
Excess Appropriation/(Funding)	0	0		3,000,000	0	0	3,000,000	0	0
Grand Total	0	3,000,000		3,000,000	0	0	3,000,000	0	0

THIS APPROPRIATION NOT REQUESTED FOR THE 2011-2013 BIENNIUM.

## Change Level by Appropriation

**Appropriation:** 83H - Lignite Resources-Federal  
**Funding Sources:** FAL - Geology Federal

### Agency Request

Change Level		2011-2012	Pos	Cumulative	% of BL	2012-2013	Pos	Cumulative	% of BL
<b>BL</b>	<b>Base Level</b>	<b>3,000,000</b>	<b>0</b>	<b>3,000,000</b>	<b>100.0</b>	<b>3,000,000</b>	<b>0</b>	<b>3,000,000</b>	<b>100.0</b>
C03	Discontinue Program	(3,000,000)	0	0	0.0	(3,000,000)	0	0	0.0

### Executive Recommendation

Change Level		2011-2012	Pos	Cumulative	% of BL	2012-2013	Pos	Cumulative	% of BL
<b>BL</b>	<b>Base Level</b>	<b>3,000,000</b>	<b>0</b>	<b>3,000,000</b>	<b>100.0</b>	<b>3,000,000</b>	<b>0</b>	<b>3,000,000</b>	<b>100.0</b>
C03	Discontinue Program	(3,000,000)	0	0	0.0	(3,000,000)	0	0	0.0

### Justification

C03	The Agency is requesting to discontinue this appropriation due to the lack of federal funds to support this program.
-----	--

## **Analysis of Budget Request**

**Appropriation:** 873 - Geology Museum

**Funding Sources:** NGC - Geology Cash

The Geology Museum and Learning Center (GLC) is funded by donations collected by the Agency. The GLC is part of the educational arm of the Agency with the purpose of giving students and citizens exposure to rocks, minerals, fossils, and fossil fuels through its five (5) display areas.

The Agency Request is for Base Level of \$9,025 each year.

The Executive Recommendation provides for the Agency Request. Expenditure of appropriation is contingent upon available funding.

## Appropriation Summary

**Appropriation:** 873 - Geology Museum

**Funding Sources:** NGC - Geology Cash

### Historical Data

### Agency Request and Executive Recommendation

Commitment Item		2009-2010	2010-2011	2010-2011	2011-2012			2012-2013		
		Actual	Budget	Authorized	Base Level	Agency	Executive	Base Level	Agency	Executive
Museum Expenses	5900046	0	9,025	9,025	9,025	9,025	9,025	9,025	9,025	9,025
Total		0	9,025	9,025	9,025	9,025	9,025	9,025	9,025	9,025
<b>Funding Sources</b>										
Fund Balance	4000005	987	1,016		1,016	1,016	1,016	1,016	1,016	1,016
Cash Fund	4000045	29	9,025		9,025	9,025	9,025	9,025	9,025	9,025
Total Funding		1,016	10,041		10,041	10,041	10,041	10,041	10,041	10,041
Excess Appropriation/(Funding)		(1,016)	(1,016)		(1,016)	(1,016)	(1,016)	(1,016)	(1,016)	(1,016)
Grand Total		0	9,025		9,025	9,025	9,025	9,025	9,025	9,025