

RIVERSIDE VOCATIONAL TECHNICAL SCHOOL

Enabling Laws

Act 61 of 2010

A.C.A. §12-29-306 - §12-29-310

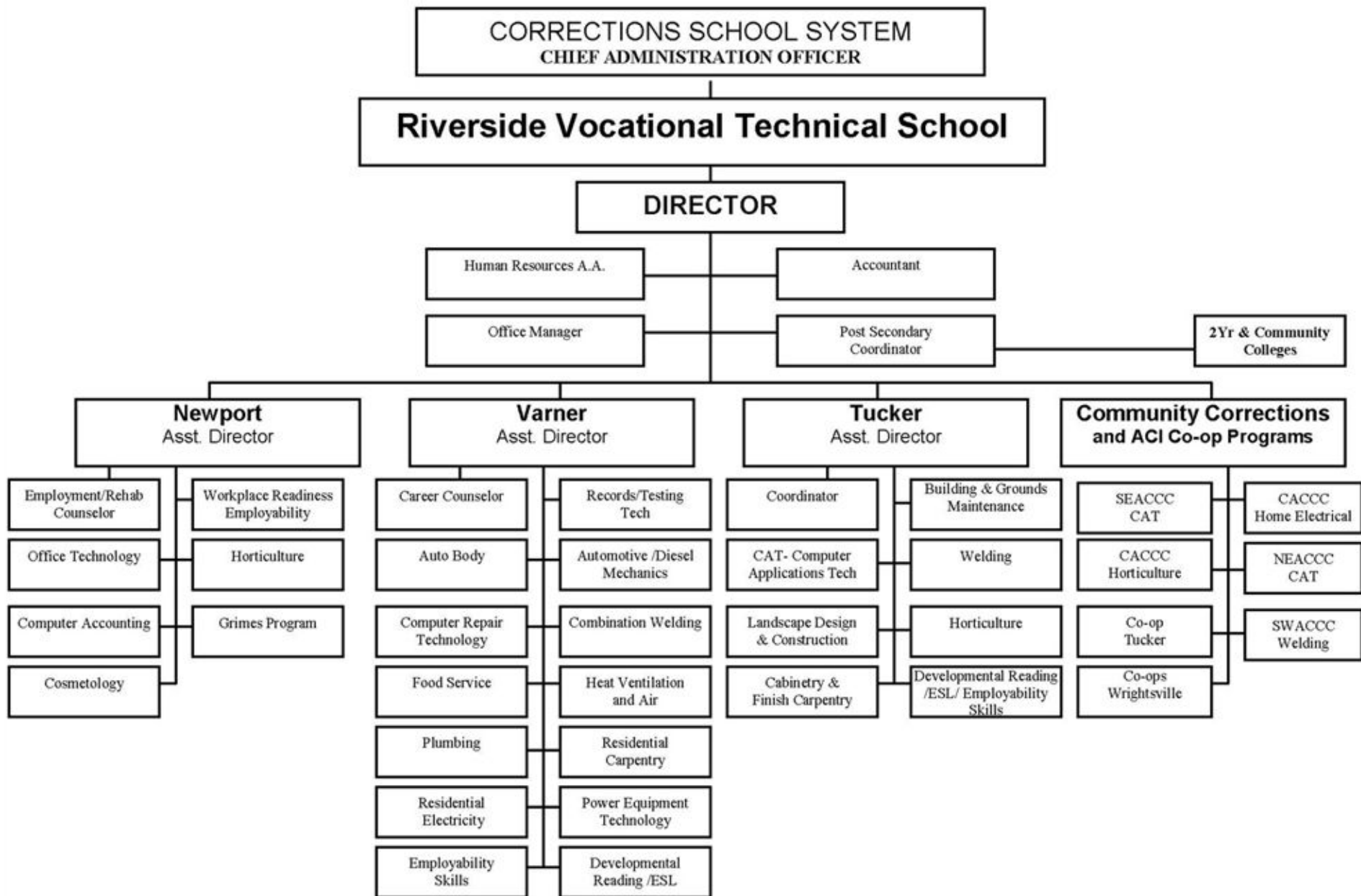
History and Organization

Vocational Education Programs began at the Tucker Unit, Arkansas Department of Correction in May, 1970 and at the Cummins Unit in August, 1970. Buildings were constructed utilizing funds from the Law Enforcement Assistance Administration. Funding for staff, equipment and supplies was provided by the Manpower Development Training Act. These funds were later supplanted by the Comprehensive Employment Training Act. The guidelines established by Congress for participation in the Job Training Partnership Act ended federal funding on October 1, 1984.

In 1985, Act 288 of the legislature (A.C.A. § 12-29-306) created Riverside Vocational Technical School effective July 1, 1985. Funding from October 1, 1984 to July 1, 1985 was provided on an interim basis by the Vocational Education Division, the Arkansas Department of Correction and the Employment Security Division.

Legislative action, Act 496 of 2005 was passed placing Riverside Vocational Technical School and the Arkansas Department of Correction School District under the same umbrella, resulting in what is now known as the Arkansas Correctional School System.

Riverside Vocational Technical School is regulated by the State Board of Workforce Education and Career Opportunities and is governed by the Corrections Board of Education. Riverside Vocational Technical School is responsible for all Vocational Education Programs provided within the Arkansas Department of Correction and the Department of Community Corrections.



Agency Commentary

The mission of Riverside Vocational Technical School is to provide quality vocational training to all qualified inmates incarcerated within the Arkansas Departments of Correction and Community Corrections. Successful completion of any program will allow the inmate to re-enter society with a marketable skill upon release from prison.

Studies have shown that inmates who participate in Vocational Technical programs have a lower recidivism rate than those who do not participate. Those who receive a G.E.D. and complete a technical program have a lower recidivism rate than those who receive a G.E.D. or Vocational Technical certificate only. There is a direct correlation between the length of time before release and the participation in a vocational technical program when applied to recidivism.

Programs at the Arkansas Department of Correction are 1440 to 1500 contact hours in length and enrollment is open entry/open exit to better utilize training slots. Currently, there are 9 programs offered at the Varner Unit, 5 programs and 2 Co-Op programs at the Tucker Unit, 3 Co-Op programs at the Wrightsville Unit, 5 programs at the McPherson Unit for female offenders at Newport and 1 Co-Op program at the Hawkins Unit for Women at Wrightsville. Programs have been added to the Ouachita Unit at Malvern and the Pine Bluff Complex at Pine Bluff. Related study, employability, workplace and career readiness programs are provided to aid in the re-entry and transition process. Short term or part-time programs are available at facilities of the Department of Community Corrections. There are 2 short term programs available at the Little Rock Unit, 1 program at the Pine Bluff Unit and 1 program at the Osceola Unit.

The federally funded Workplace Transition appropriation, is currently authorized through a Miscellaneous Federal Grant from the U.S. Department of Education Office of Vocational and Adult Education. This program offers post-secondary training to incarcerated offenders with a high school diploma or GED who are under the age of 36, within 7 years of release and have not been convicted of murder or sex related crimes as defined by prescribed federal legislation.

Audit Findings

DIVISION OF LEGISLATIVE AUDIT
AUDIT OF :
RIVERSIDE VOCATIONAL TECHNICAL SCHOOL
FOR THE YEAR ENDED JUNE 30, 2009

Findings	Recommendations
None	None

Employment Summary

	Male	Female	Total	%
White Employees	17	13	30	83 %
Black Employees	3	3	6	17 %
Other Racial Minorities	0	0	0	0 %
Total Minorities			6	17 %
Total Employees			36	100 %

Publications

A.C.A. 25-1-204

Name	Statutory Authorization	Required for		# of Copies	Reason(s) for Continued Publication and Distribution
		Governor	General Assembly		
N/A	N/A	N	N	0	N/A

Department Appropriation Summary

Historical Data							Agency Request and Executive Recommendation												
Appropriation		2009-2010		2010-2011		2010-2011		2011-2012						2012-2013					
		Actual	Pos	Budget	Pos	Authorized	Pos	Base Level	Pos	Agency	Pos	Executive	Pos	Base Level	Pos	Agency	Pos	Executive	Pos
4GY	Workplace Training	354,384	1	265,000	0	317,556	1	265,000	0	265,000	0	265,000	0	265,000	0	265,000	0	265,000	0
732	Riverside VT-State Operations	2,000,614	35	2,144,776	35	2,312,471	36	2,155,416	35	2,155,416	35	2,155,416	35	2,155,416	35	2,155,416	35	2,155,416	35
750	Plumbing Apprenticeship Program	70,664	1	72,583	1	73,986	1	71,491	1	71,491	1	71,491	1	71,491	1	71,491	1	71,491	1
Total		2,425,662	37	2,482,359	36	2,704,013	38	2,491,907	36	2,491,907	36	2,491,907	36	2,491,907	36	2,491,907	36	2,491,907	36

Funding Sources			%		%			%		%		%		%		%		%
General Revenue	4000010	2,071,278	85.4	2,217,359	89.3		2,226,907	89.4	2,226,907	89.4	2,226,907	89.4	2,226,907	89.4	2,226,907	89.4	2,226,907	89.4
Federal Revenue	4000020	354,384	14.6	265,000	10.7		265,000	10.6	265,000	10.6	265,000	10.6	265,000	10.6	265,000	10.6	265,000	10.6
Total Funds		2,425,662	100.0	2,482,359	100.0		2,491,907	100.0	2,491,907	100.0	2,491,907	100.0	2,491,907	100.0	2,491,907	100.0	2,491,907	100.0
Excess Appropriation/(Funding)		0		0			0		0		0		0		0		0	
Grand Total		2,425,662		2,482,359			2,491,907		2,491,907		2,491,907		2,491,907		2,491,907		2,491,907	

Agency Position Usage Report

FY2008 - 2009						FY2009 - 2010						FY2010 - 2011					
Authorized in Act	Budgeted			Unbudgeted Total	% of Authorized Unused	Authorized in Act	Budgeted			Unbudgeted Total	% of Authorized Unused	Authorized in Act	Budgeted			Unbudgeted Total	% of Authorized Unused
	Filled	Unfilled	Total				Filled	Unfilled	Total				Filled	Unfilled	Total		
38	37	1	38	0	2.63 %	38	33	4	37	1	13.16 %	38	33	3	36	2	13.16 %

Analysis of Budget Request

Appropriation: 4GY - Workplace Training

Funding Sources: FTR - Workplace Training - Federal - RVTS

Riverside Vocational Technical School administers a federally funded program entitled Workplace & Community Transition Training. Funding is provided through a grant from the U.S. Department of Education. The program offers vocational training to incarcerated youth offenders of the Department of Community Correction through working partnerships with applicable institutions of higher education.

Base Level salaries and matching do not include appropriation for a Cost of Living Adjustment or Career Service Payments.

Riverside Vocational Technical School requests Base Level for each year of the 2011-2013 biennium.

The Executive Recommendation provides for the Agency Request.

Appropriation Summary

Appropriation: 4GY - Workplace Training

Funding Sources: FTR - Workplace Training - Federal - RVTS

Historical Data

Agency Request and Executive Recommendation

Commitment Item		2009-2010	2010-2011	2010-2011	2011-2012			2012-2013		
		Actual	Budget	Authorized	Base Level	Agency	Executive	Base Level	Agency	Executive
Regular Salaries	5010000	36,400	0	38,990	0	0	0	0	0	0
#Positions		1	0	1	0	0	0	0	0	0
Personal Services Matching	5010003	13,084	0	13,566	0	0	0	0	0	0
Operating Expenses	5020002	1,152	15,000	15,000	15,000	15,000	15,000	15,000	15,000	15,000
Conference & Travel Expenses	5050009	0	0	0	0	0	0	0	0	0
Professional Fees	5060010	0	0	0	0	0	0	0	0	0
Data Processing	5090012	0	0	0	0	0	0	0	0	0
Grants and Aid	5100004	303,748	250,000	250,000	250,000	250,000	250,000	250,000	250,000	250,000
Capital Outlay	5120011	0	0	0	0	0	0	0	0	0
Total		354,384	265,000	317,556	265,000	265,000	265,000	265,000	265,000	265,000
Funding Sources										
Federal Revenue	4000020	354,384	265,000		265,000	265,000	265,000	265,000	265,000	265,000
Total Funding		354,384	265,000		265,000	265,000	265,000	265,000	265,000	265,000
Excess Appropriation/(Funding)		0	0		0	0	0	0	0	0
Grand Total		354,384	265,000		265,000	265,000	265,000	265,000	265,000	265,000

Analysis of Budget Request

Appropriation: 732 - Riverside VT-State Operations

Funding Sources: ETR - General Revenue - Riverside Voc-Tech School

Riverside Vocational Technical School operates five (5) campuses within the Department of Community Correction. These are the Varner Unit, Tucker Unit, Wrightsville Unit, Grimes Unit, and the McPherson Unit for female offenders. Short term or part-time programs are available at the Little Rock, Pine Bluff, and Osceola facilities of the Department of Community Corrections. Emphasis is placed on education and skill development which will result in lower recidivism rate and employment upon release. This appropriation is funded by general revenue.

Base Level salaries and matching do not include appropriation for a Cost of Living Adjustment or Career Service Payments.

Riverside Vocational Technical School requests Base Level for each year of the 2011-2013 biennium.

The Executive Recommendation provides for the Agency Request.

Appropriation Summary

Appropriation: 732 - Riverside VT-State Operations

Funding Sources: ETR - General Revenue - Riverside Voc-Tech School

Historical Data

Agency Request and Executive Recommendation

Commitment Item		2009-2010	2010-2011	2010-2011	2011-2012			2012-2013		
		Actual	Budget	Authorized	Base Level	Agency	Executive	Base Level	Agency	Executive
Regular Salaries	5010000	1,460,695	1,455,085	1,568,950	1,459,125	1,459,125	1,459,125	1,459,125	1,459,125	1,459,125
#Positions		35	35	36	35	35	35	35	35	35
Personal Services Matching	5010003	477,475	493,384	524,219	499,984	499,984	499,984	499,984	499,984	499,984
Operating Expenses	5020002	58,444	190,807	213,102	190,807	190,807	190,807	190,807	190,807	190,807
Conference & Travel Expenses	5050009	4,000	4,000	4,000	4,000	4,000	4,000	4,000	4,000	4,000
Professional Fees	5060010	0	1,500	2,200	1,500	1,500	1,500	1,500	1,500	1,500
Data Processing	5090012	0	0	0	0	0	0	0	0	0
Capital Outlay	5120011	0	0	0	0	0	0	0	0	0
Total		2,000,614	2,144,776	2,312,471	2,155,416	2,155,416	2,155,416	2,155,416	2,155,416	2,155,416
Funding Sources										
General Revenue	4000010	2,000,614	2,144,776		2,155,416	2,155,416	2,155,416	2,155,416	2,155,416	2,155,416
Total Funding		2,000,614	2,144,776		2,155,416	2,155,416	2,155,416	2,155,416	2,155,416	2,155,416
Excess Appropriation/(Funding)		0	0		0	0	0	0	0	0
Grand Total		2,000,614	2,144,776		2,155,416	2,155,416	2,155,416	2,155,416	2,155,416	2,155,416

Analysis of Budget Request

Appropriation: 750 - Plumbing Apprenticeship Program

Funding Sources: ETR - General Revenue - Riverside Voc-Tech School

The Plumbing Apprenticeship Program is administered by Riverside Vocational Technical School. Program costs consists of personal services for one (1) faculty member and provides technical training in the area of plumbing to qualified persons incarcerated in facilities of the Department of Community Correction. The goal is to provide individuals with marketable skills to re-enter the workplace upon release from prison. This appropriation is funded by general revenue.

Base Level salaries and matching do not include appropriation for a Cost of Living Adjustment or Career Service Payments.

Riverside Vocational Technical School requests Base Level for each year of the 2011-2013 biennium.

The Executive Recommendation provides for the Agency Request.

Appropriation Summary

Appropriation: 750 - Plumbing Apprenticeship Program

Funding Sources: ETR - General Revenue - Riverside Voc-Tech School

Historical Data

Agency Request and Executive Recommendation

Commitment Item		2009-2010	2010-2011	2010-2011	2011-2012			2012-2013		
		Actual	Budget	Authorized	Base Level	Agency	Executive	Base Level	Agency	Executive
Regular Salaries	5010000	54,882	55,201	56,598	54,301	54,301	54,301	54,301	54,301	54,301
#Positions		1	1	1	1	1	1	1	1	1
Personal Services Matching	5010003	15,782	17,382	17,388	17,190	17,190	17,190	17,190	17,190	17,190
Total		70,664	72,583	73,986	71,491	71,491	71,491	71,491	71,491	71,491
Funding Sources										
General Revenue	4000010	70,664	72,583		71,491	71,491	71,491	71,491	71,491	71,491
Total Funding		70,664	72,583		71,491	71,491	71,491	71,491	71,491	71,491
Excess Appropriation/(Funding)		0	0		0	0	0	0	0	0
Grand Total		70,664	72,583		71,491	71,491	71,491	71,491	71,491	71,491